



Federal Aviation
Administration

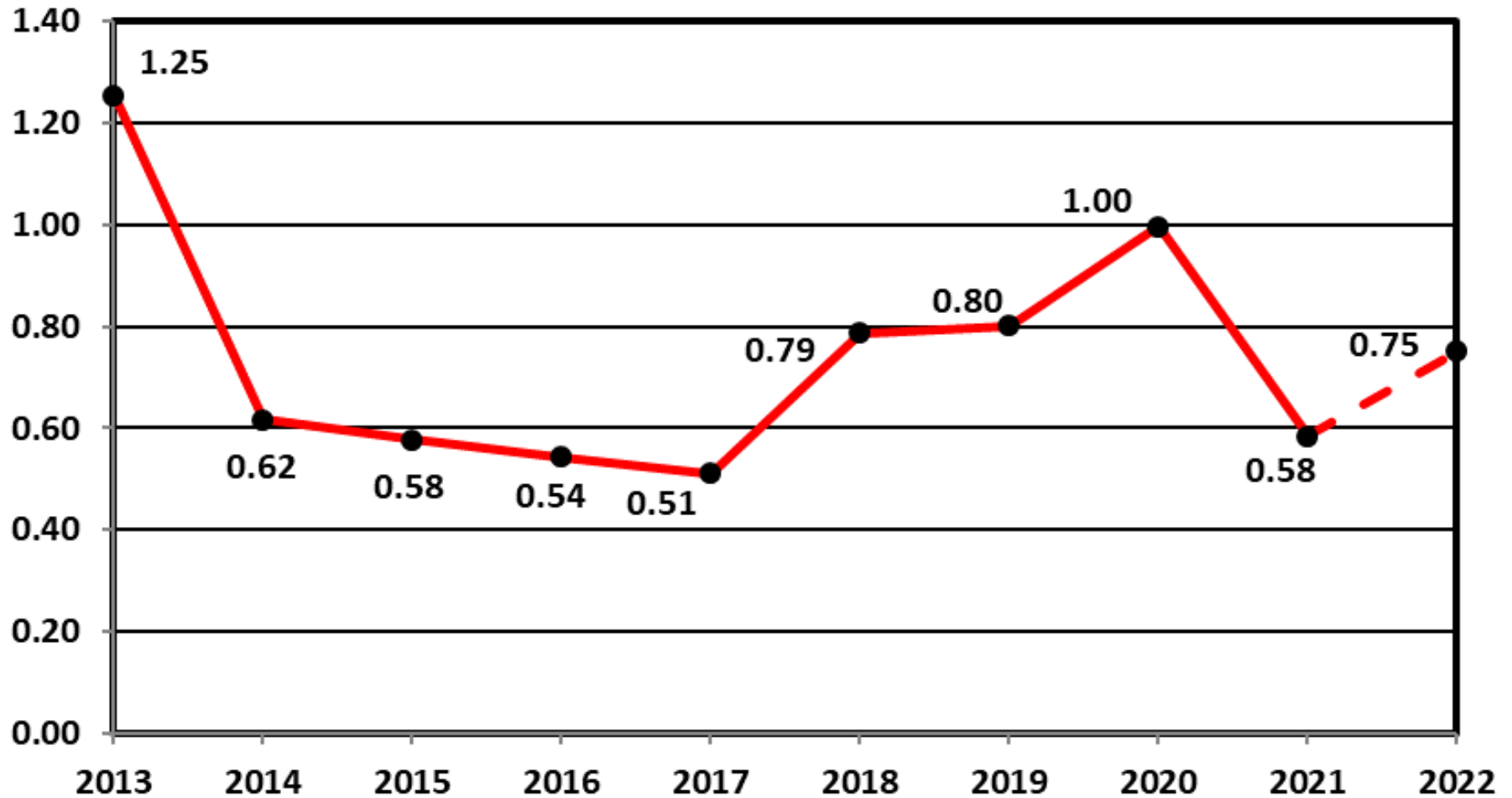
Fleet Safety Section, AIR-723

Rotorcraft Monthly Accident Briefing

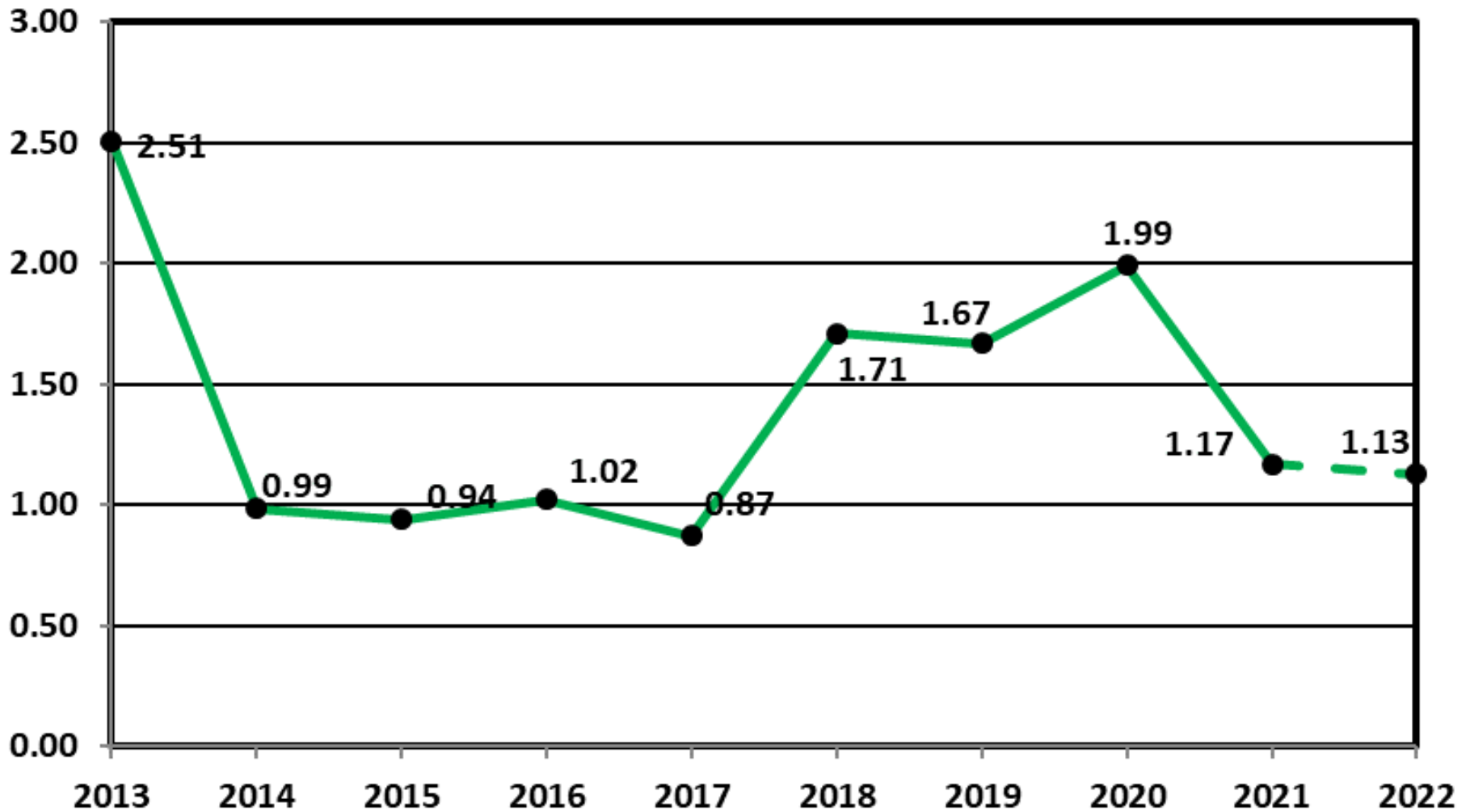
October 2021



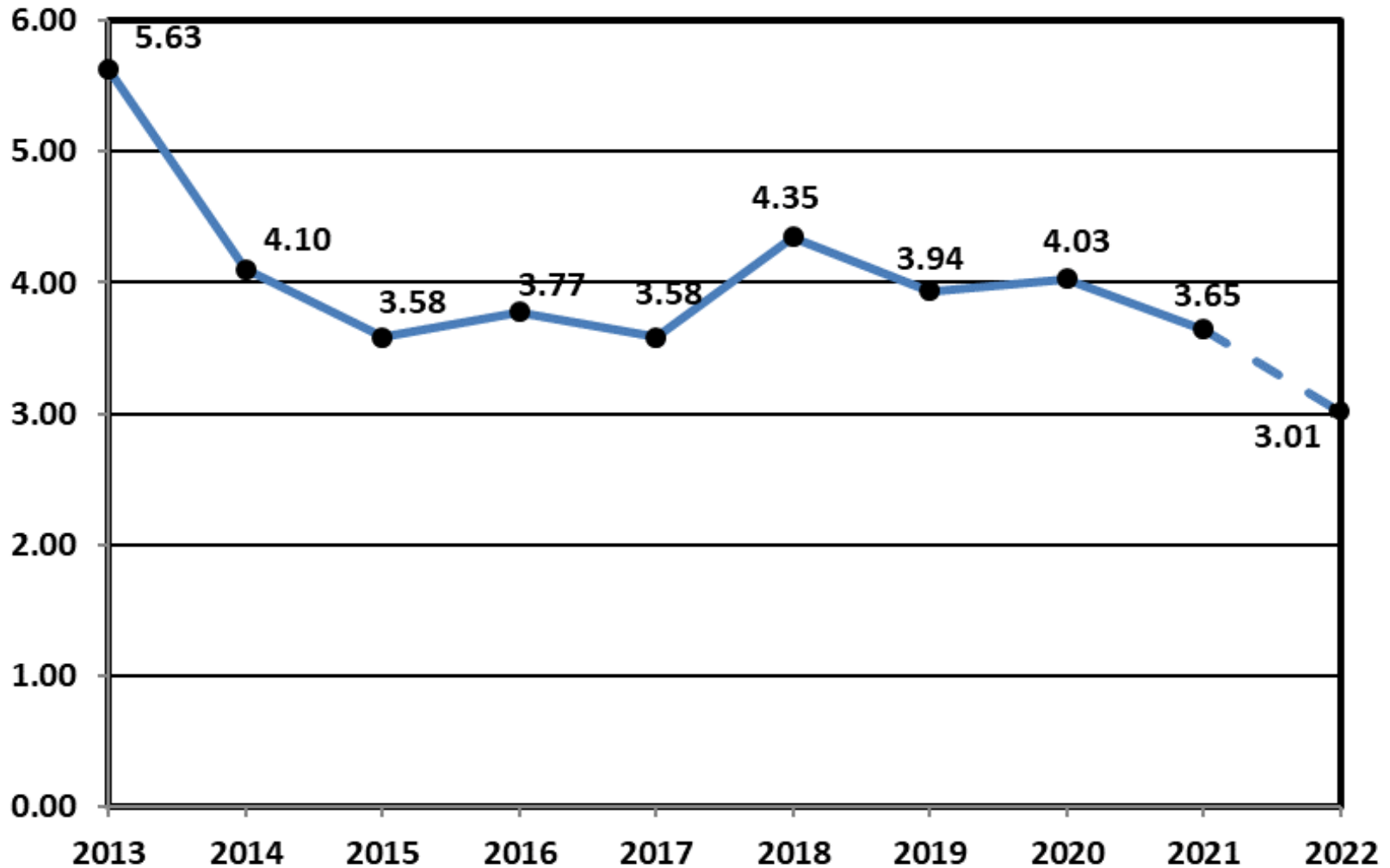
Estimated U.S. Rotorcraft FATAL Accident Rate by FY 10 Year Lookback – Rates per 100,000 Hours



Estimated U.S. Rotorcraft Fatality Rate by FY 10 Year Lookback – Rates per 100,000 Hours



Estimated U.S. Rotorcraft Accident Rate by FY 10 Year Lookback – Rates per 100,000 Hours



FY 22 – U.S. Registered Rotorcraft Event Counts

	Oct	Nov	Dec	Jan	Feb	Mar	Apr	May	Jun	Jul	Aug	Sep	YTD
Accidents:	8												8
Fatal Acc:	2												2
Fatalities:	3												3
Same time period, previous FY: 8 Accidents, 0 Fatal Accidents, 0 Fatalities													

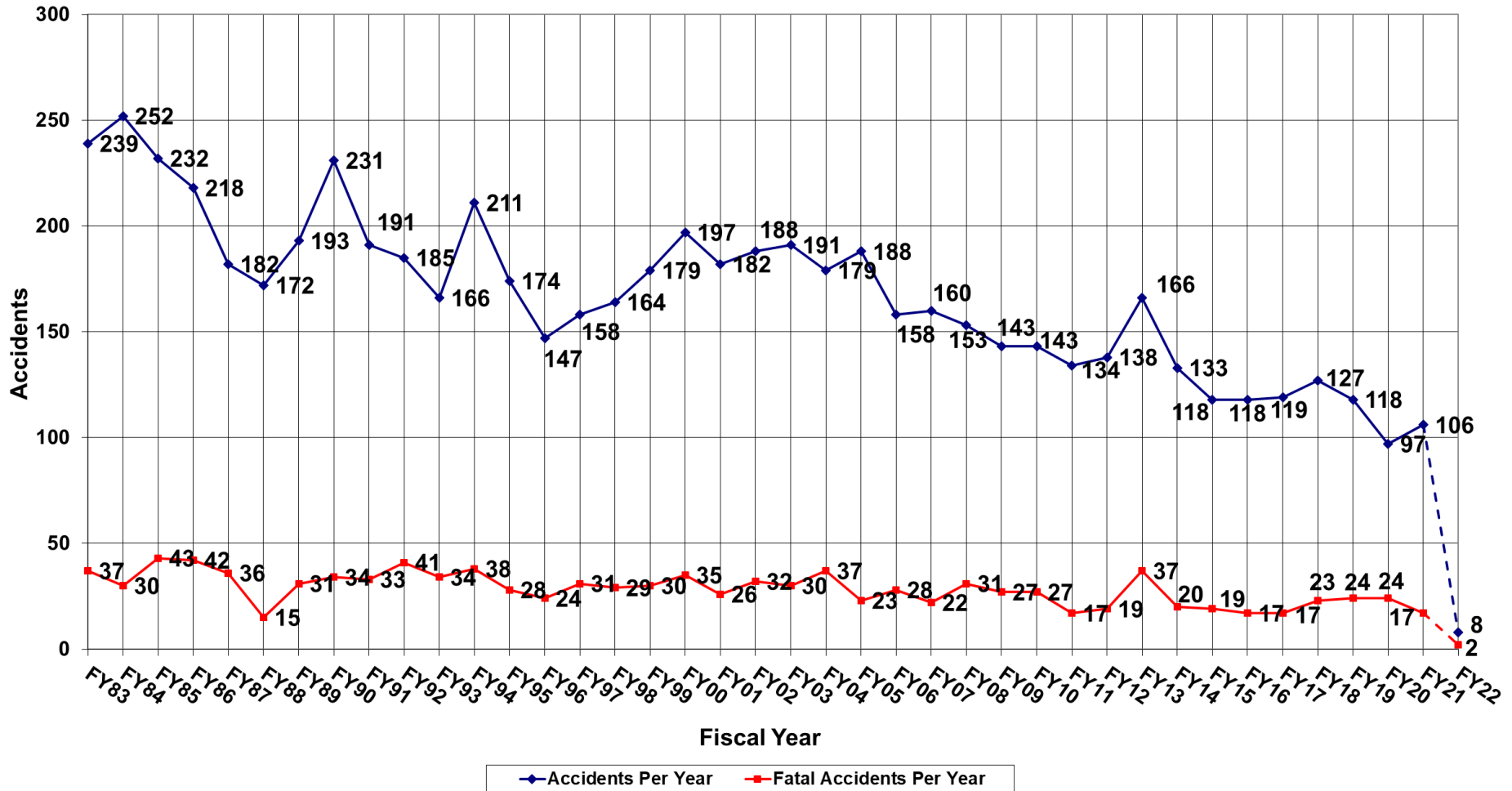
Data Source: FAA, NTSB Databases. Includes only events classified as accidents and does not include incidents. The accident numbers for each month of the Fiscal Year may vary from the previous monthly briefing based on analysis between FAA and NTSB databases for the specified month. The NTSB database may include accidents that were not reported to this office resulting in slightly different numbers.

Estimated Rates by Month (per 100,000 flight hours)

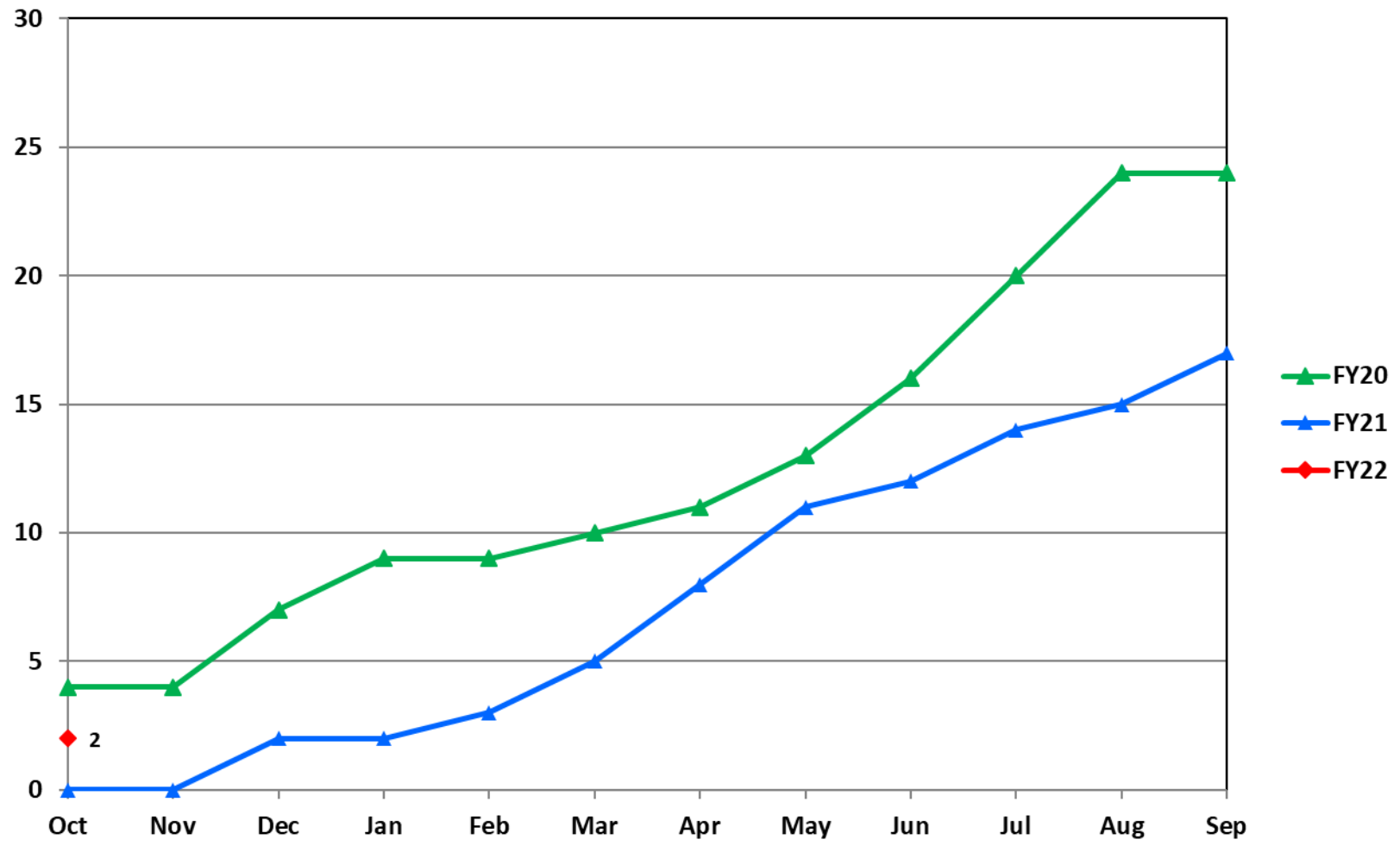
	Oct	Nov	Dec	Jan	Feb	Mar	Apr	May	Jun	Jul	Aug	Sep	YTD
Accidents:	3.01												3.01
Fatal Acc:	0.75												0.75
Fatalities:	1.13												1.13



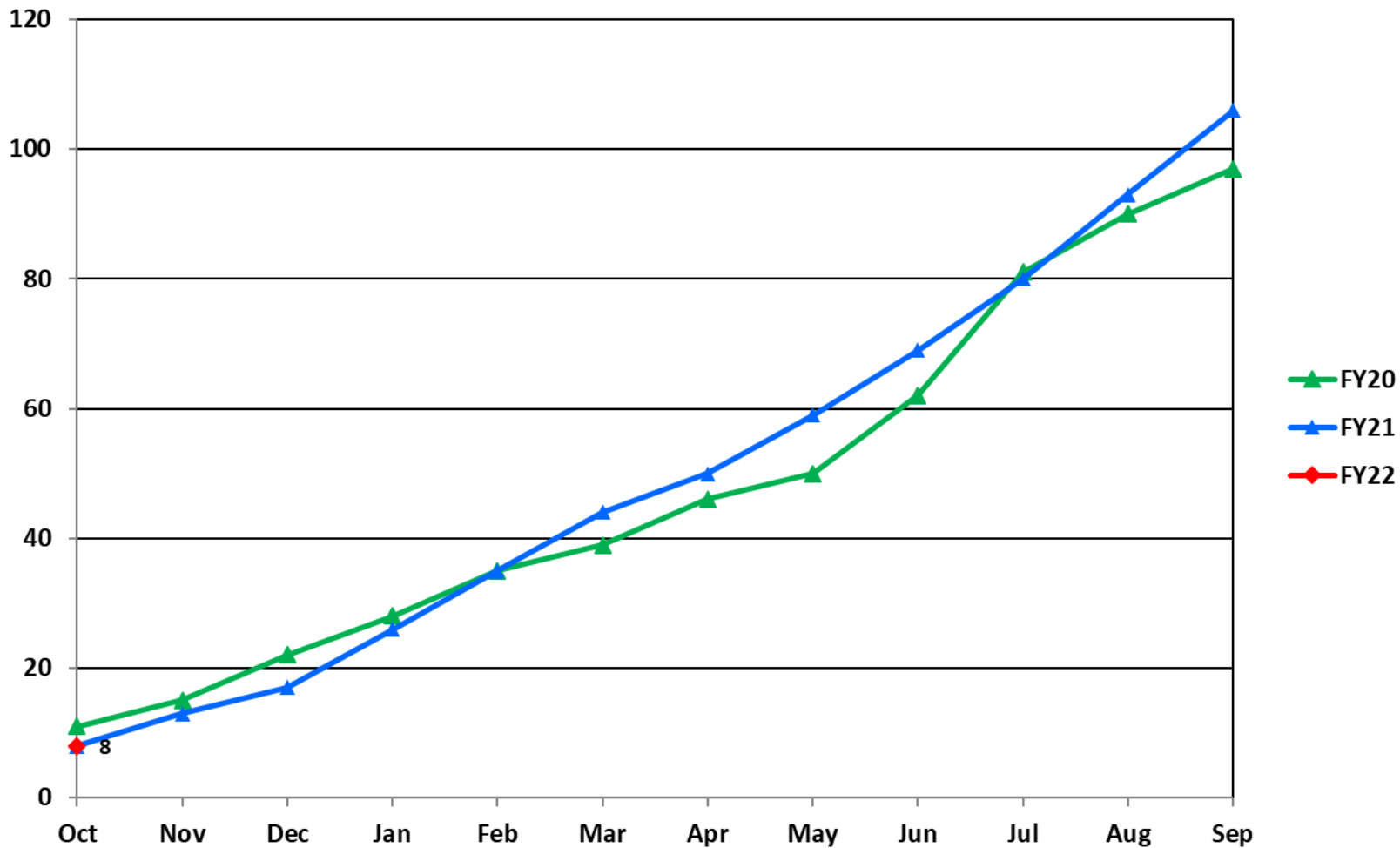
U.S. Registered Rotorcraft Accidents FY83 - FY22



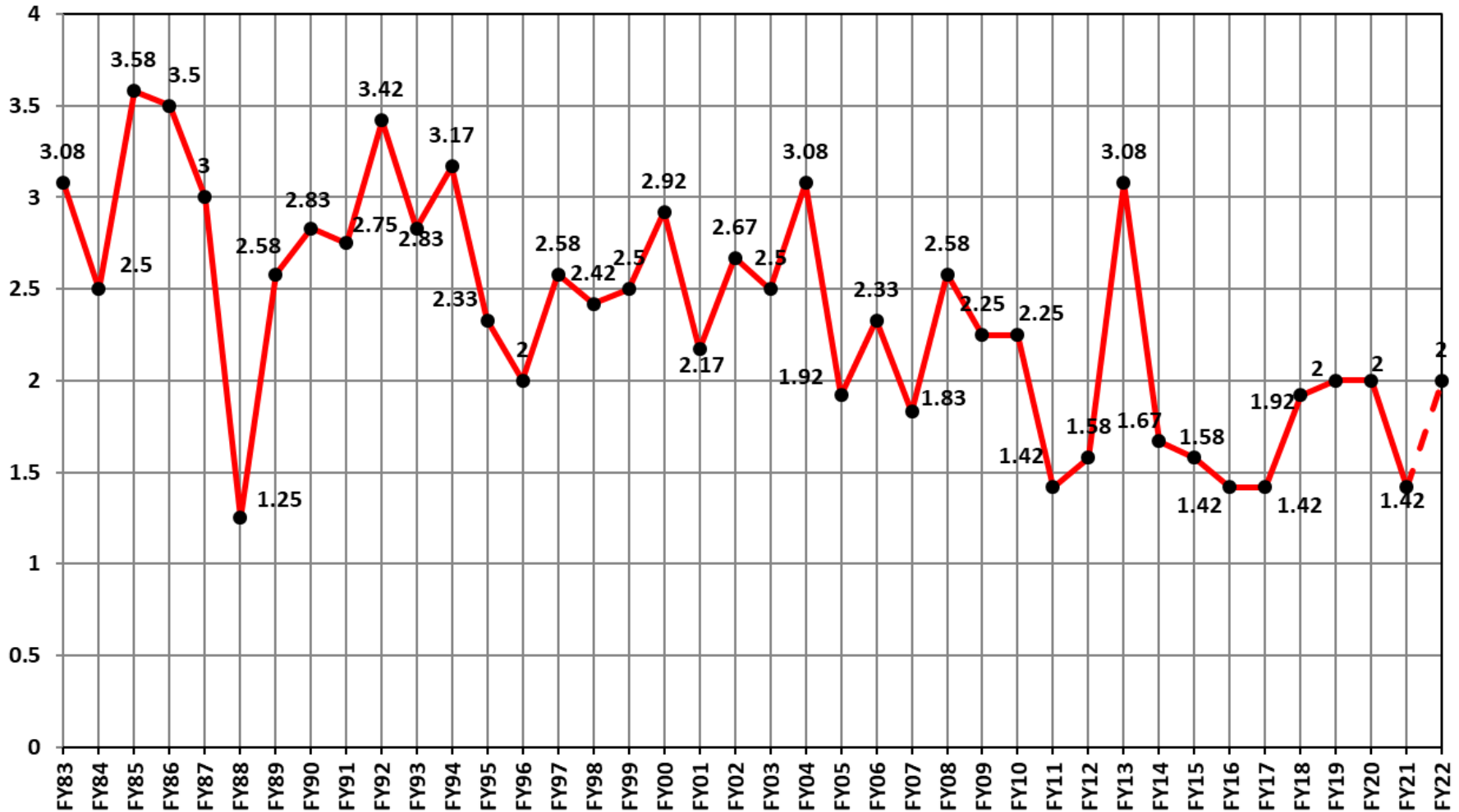
U.S. Registered Rotorcraft Cumulative Fatal Accident Count: FY19 - FY22



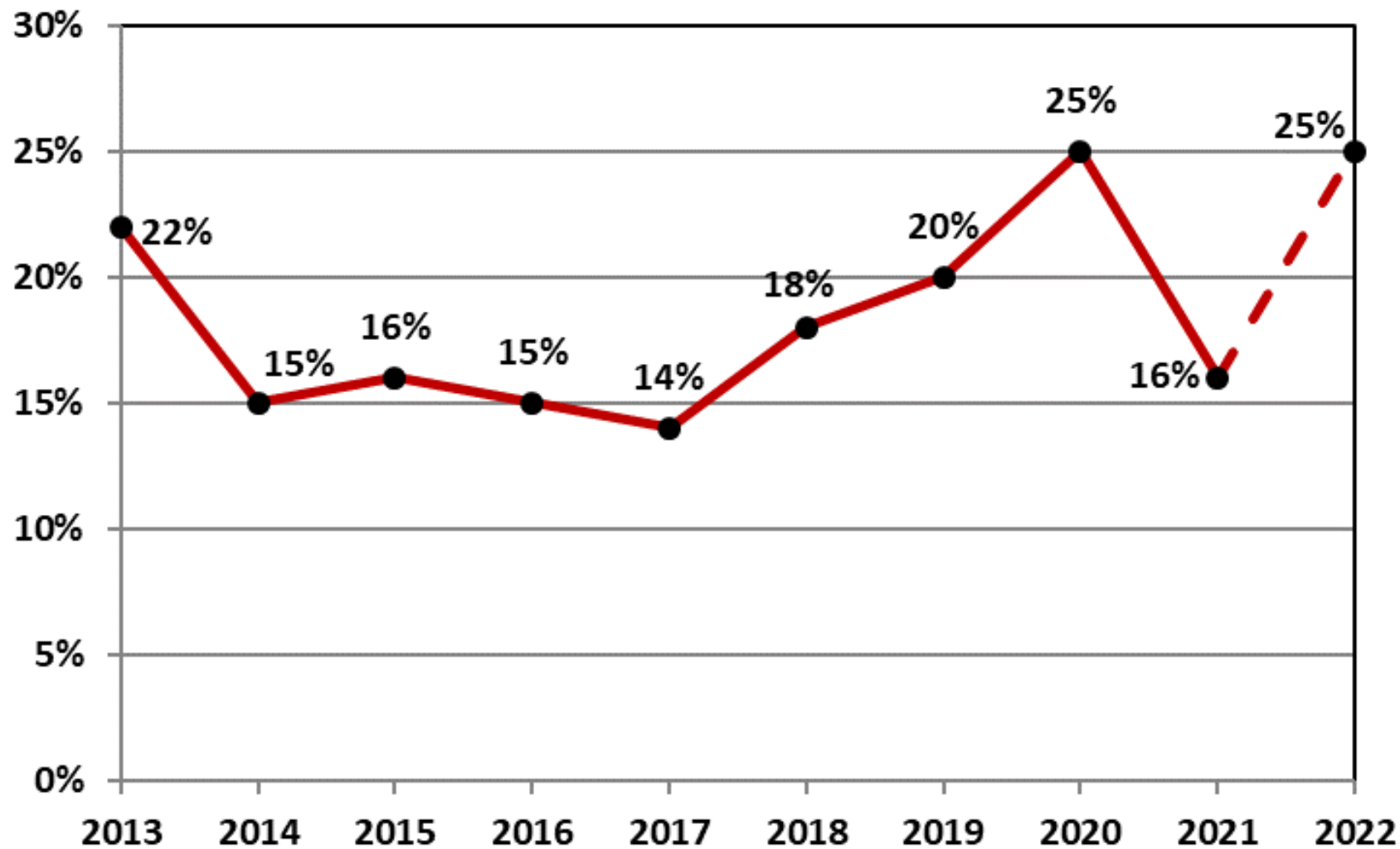
U.S. Registered Rotorcraft Cumulative Accident Count: FY19 - FY22



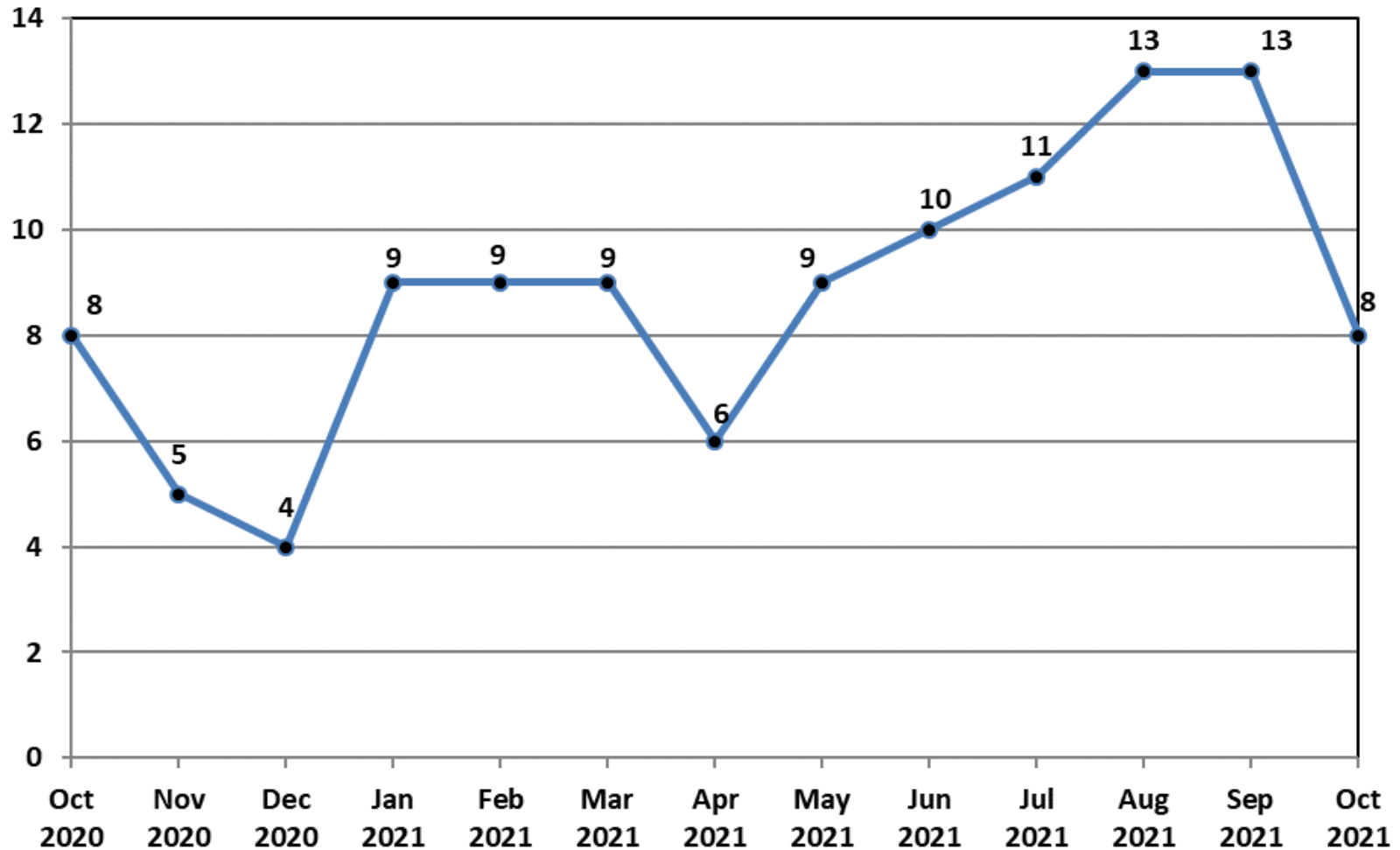
U.S. Registered Rotorcraft Average Fatal Accidents Per Month, FY83-FY22



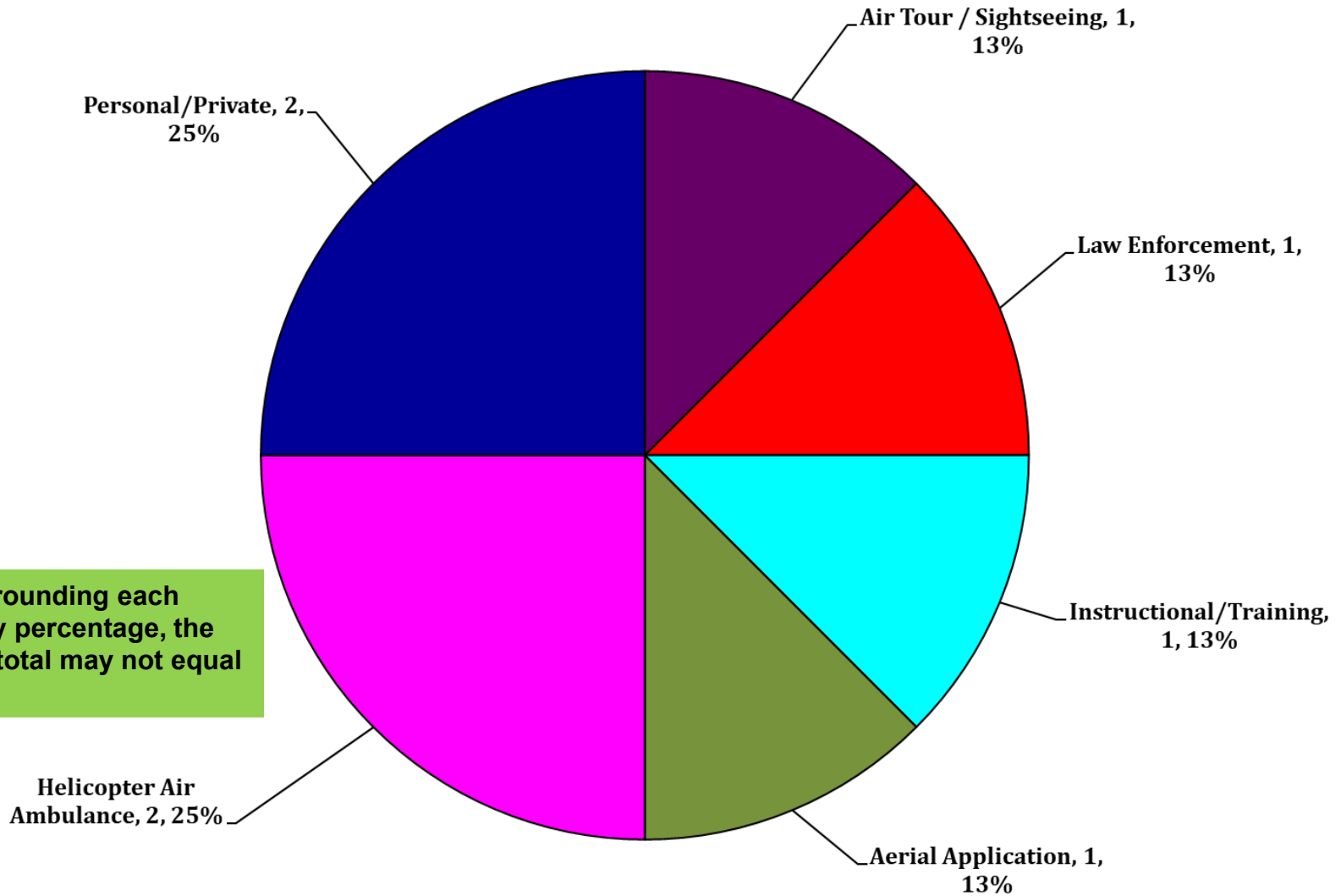
% of U.S. Rotorcraft Accidents with a Fatality (FY22, Oct)



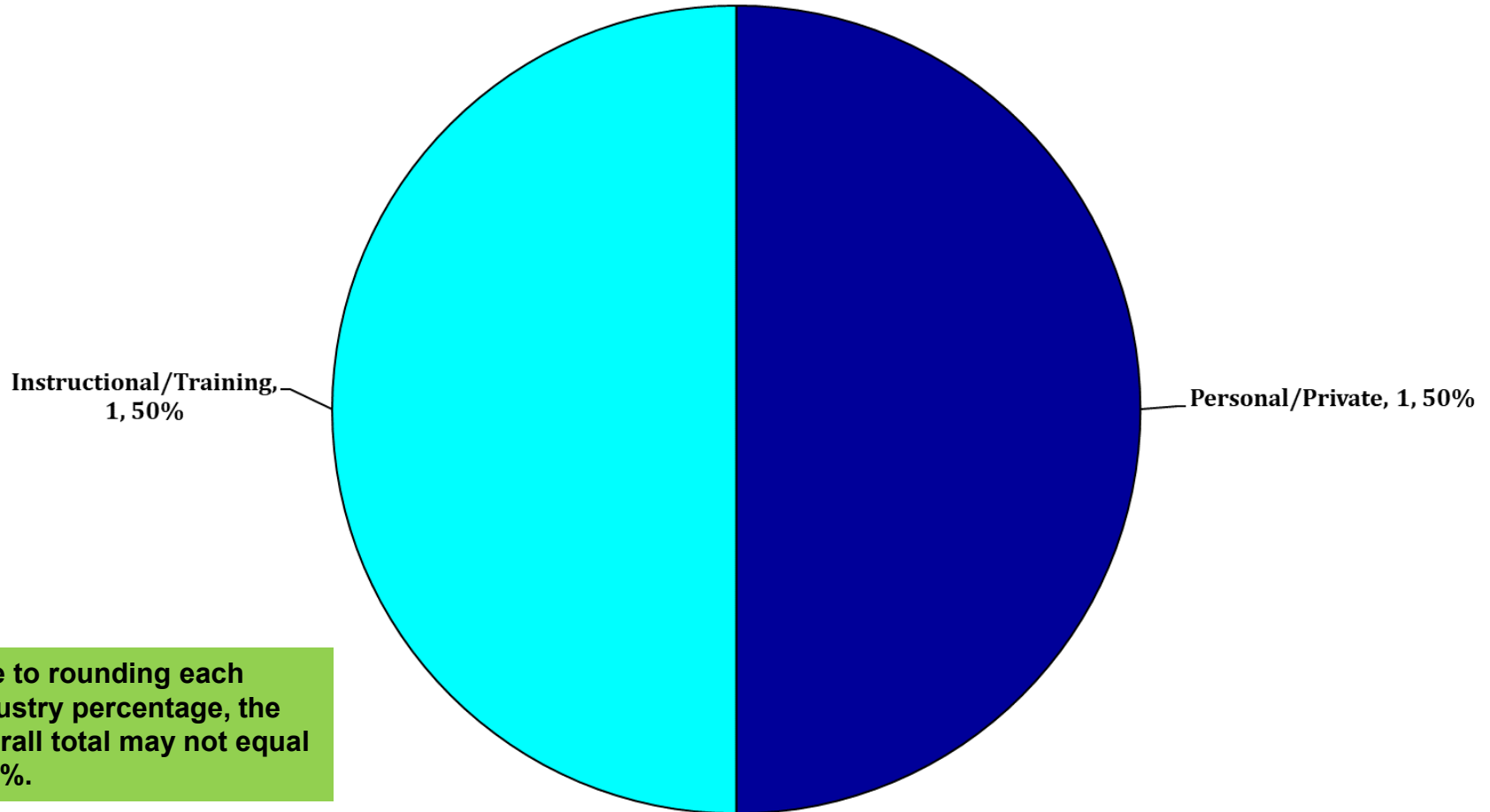
U.S. Registered Rotorcraft 13 Month Rolling Accident Count



FY 22 – Total Accidents by Industry (Oct)



FY 22 – Total FATAL Accidents by Industry (Oct)



FY 22 – U.S. Registered Fatal Rotorcraft Accidents

- 10-10-21 – Robinson R44, N637HP, Part 91, Cornwall, NY, 1 fatal
 - Personal use flight; 70 minutes into planned route from Glenn Falls to Ronkonkoma
 - Over Hudson River, made series of turns before crash **NTSB: ERA22FA010**
- 10-1-21 – Robinson R22, N412TL, Part 91, Chandler, AZ, 2 fatal
 - Instructional/training flight; traffic pattern at Chandler Municipal Airport
 - Midair collision w/Piper PA-28-181 airplane **NTSB: WPR22FA001**



FY 22 - US Rotorcraft Accidents By Model

MFR	Model	Registered U.S. Fleet Size	Percentage of Total U.S. Fleet	Number of FY22 U.S. Registered Accidents	Percentage of Total FY22 U.S. Registered Accidents
Airbus Helicopters	AS350 (H125)	927	7%	1	13%
	BK117 (H145)	213	2%		
	EC120 (H120)	89	1%		
	EC130 (H130)	264	2%		
	EC135 (H135)	341	3%		

Only models that comprise at least 1% of U.S. registered rotorcraft are listed unless an accident has occurred.

*Fleet size based on analysis of rotorcraft on FAA registry as of March 2021



FY 22 - US Rotorcraft Accidents By Model

MFR	Model	Registered U.S. Fleet Size	Percentage of Total U.S. Fleet	Number of FY22 U.S. Registered Accidents	Percentage of Total FY22 U.S. Registered Accidents
Bell	206Bs	912	7%	1	13%
	206Ls	557	4%		
	212	83	1%		
	407	791	6%		
	412	86	1%		
	429	120	1%	1	13%
	505	101	1%		

Only models that comprise at least 1% of U.S. registered rotorcraft are listed unless an accident has occurred.

*Fleet size based on analysis of rotorcraft on FAA registry as of March 2021



FY 22 - US Rotorcraft Accidents By Model

MFR	Model	Registered U.S. Fleet Size	Percentage of Total U.S. Fleet	Number of FY22 U.S. Registered Accidents	Percentage of Total FY22 U.S. Registered Accidents
Robinson	R-22	832	7%	1	13%
	R-44	1,686	13%	2	25%
	R-66	306	2%	1	13%

Only models that comprise at least 1% of U.S. registered rotorcraft are listed unless an accident has occurred.

*Fleet size based on analysis of rotorcraft on FAA registry as of March 2021



FY 22 - US Rotorcraft Accidents By Model

MFR	Model	Registered U.S. Fleet Size	Percentage of Total U.S. Fleet	Number of FY22 U.S. Registered Accidents	Percentage of Total FY22 U.S. Registered Accidents
Sikorsky	S-61	92	1%		
	S-76	228	2%		
	S-92	89	1%		

Only models that comprise at least 1% of U.S. registered rotorcraft are listed unless an accident has occurred.

*Fleet size based on analysis of rotorcraft on FAA registry as of March 2021



FY 22 - US Rotorcraft Accidents By Model

MFR	Model	Registered U.S. Fleet Size	Percentage of Total U.S. Fleet	Number of FY22 U.S. Registered Accidents	Percentage of Total FY22 U.S. Registered Accidents
Enstrom	280	122	1%		
	480	65	1%		
	F28	157	1%		
Hiller	UH-12/H-23	273	2%		
Leonardo (formerly Agusta Westland)	A109	166	1%		
	A119	136	1%		
	AW139	129	1%		
MDHI	369	638	5%		
Restricted Category (all TCs)	HH-1/TH-1/UH-1	530	4%		
	OH-58	394	3%		
	H-60	229	2%		
Schweizer Rotorcraft Services Group	269/300/TH-55	487	4%		
Scott's Bell	47	523	4%	1	13%

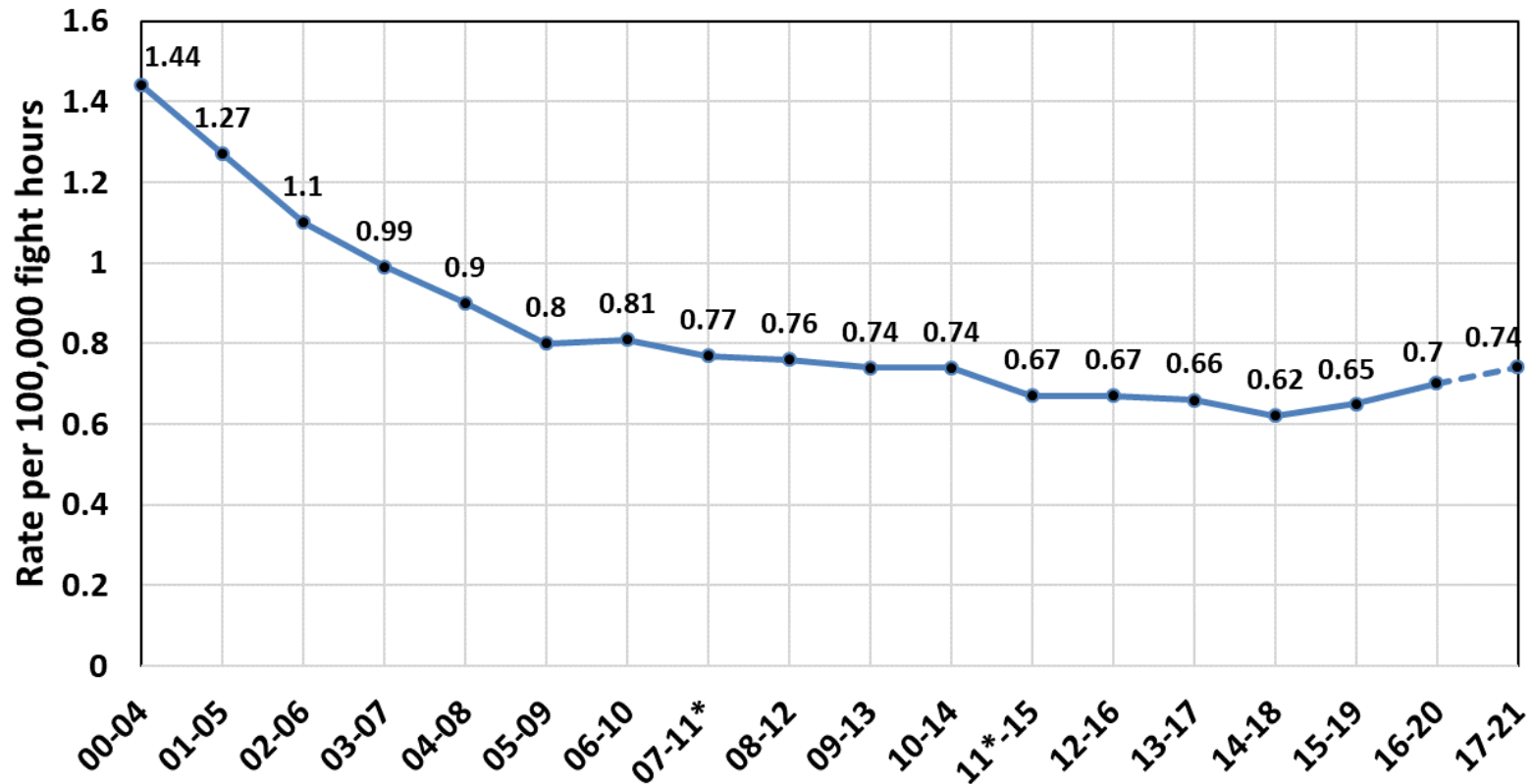
Only models that comprise at least 1% of U.S. registered rotorcraft are listed unless an accident has occurred.

*Fleet size based on analysis of rotorcraft on FAA registry as of March 2021



U.S. Helicopter Safety Team (USHST) 5 Year Average Fatal Accident Rate (CY)

Current as of: 11/1/2021



Goal: By 2025, reduce the 5 year average fatal accident rate to 0.55 per 100K hours



U.S. Helicopter Safety Team (USHST) Key Fatal Accident Rate Markers (CY)

