

Rotorcraft Accident Dashboard

Data Source: NTSB, Rotorcraft ATS
Data POC: Lee Roskopf, AIR-723
Dashboard POC: AIR 340



Filters: Report Month: Feb 2022 [Click on icon for help](#) [Click to view Historical Accidents Tab](#)

FY22: October-February

Accidents:	42
vs. Same Period, Previous FY:	▲20%
vs. Same Period, 5 Year Average:	▲10%
Fatal Accidents:	11
vs. Same Period, Previous FY:	▲267%
vs. Same Period, 5 Year Average:	▲38%
Fatalities:	19
vs. Same Period, Previous FY:	▲171%
vs. Same Period, 5 Year Average:	▲1%
Accident Rate (per 100k hours):	3.73
vs. Same Period, Previous FY:	▲16%
vs. Same Period, 5 Year Average:	▲6%
Fatal Accident Rate (per 100k hours):	0.98
vs. Same Period, Previous FY:	▲255%
vs. Same Period, 5 Year Average:	▲31%
Fatality Rate (per 100k hours):	1.69
vs. Same Period, Previous FY:	▲163%
vs. Same Period, 5 Year Average:	▼5%

U.S. Registered Rotorcraft Event Counts

	Oct	Nov	Dec	Jan	Feb	Mar	Apr	May	Jun	Jul	Aug	Sep	Grand Total
Accidents	9	8	11	4	10								42
Fatal Accidents	2	1	4	1	3								11
Fatalities	3	1	7	2	6								19

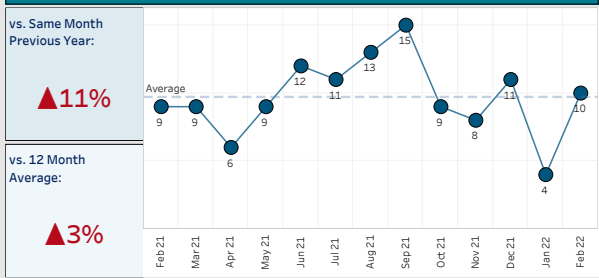
Same time period, previous FY: Accidents: 35; Fatal Accidents: 3; Fatalities: 7.

Estimated Rates by Month (per 100,000 flight hours)

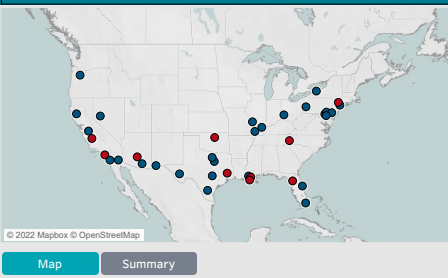
	Oct	Nov	Dec	Jan	Feb	Mar	Apr	May	Jun	Jul	Aug	Sep	Grand Total
Accident Rate	3.38	3.52	5.53	1.98	4.33								3.73
Fatal Accident Rate	0.75	0.44	2.01	0.49	1.30								0.98
Fatality Rate	1.13	0.44	3.52	0.99	2.60								1.69

Same time period, previous FY: Accident Rate: 3.21; Fatal Accident Rate: 0.28; Fatality Rate: 0.64.

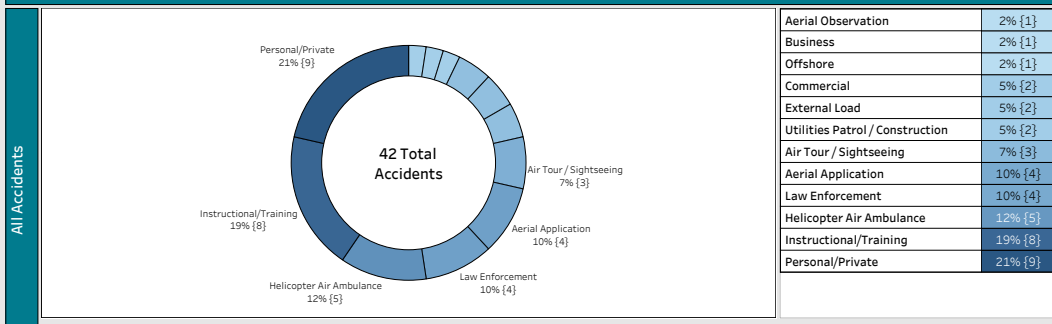
U.S. Registered Rotorcraft 13 Month Accident Count



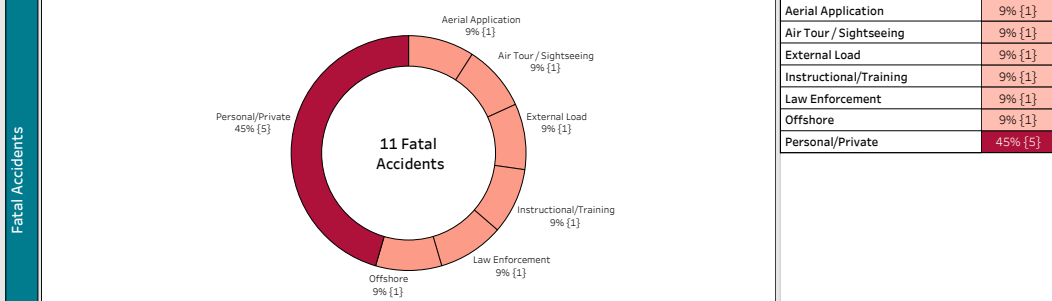
Accident Details



Accidents by Industry Sector



Accidents during February were distributed among at least 7 different industry sectors, with Personal/Private the only one with more than 1 accident. For the overall FY, Oct - Feb, Personal/Private led all industry sectors in accounting for 21% of the accidents, followed closely by Instructional/Training with 19%.



The 3 fatal accidents during February involved 1 each from the following industry sectors: Aerial Application, Law Enforcement, and External Load. The fatal accidents for Oct-Feb were spread across 7 different industry sectors. Personal/Private was the only sector from Oct-Feb with more than 1 fatal accident.

Looking for traditional PowerPoint presentation?

To view legacy presentation of monthly accident data, continue to page three . The PowerPoint presentation will eventually be phased out of from FAA monthly report.

Click on comment box below for additional information



Rotorcraft Accident Dashboard

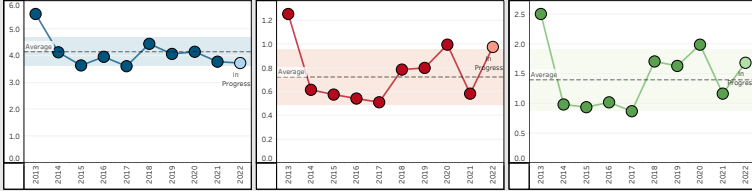
Data Source: NTSB, Rotorcraft ATS
 Data POC: Lee Roskopf, AIR-723
 Dashboard POC: AIR-540



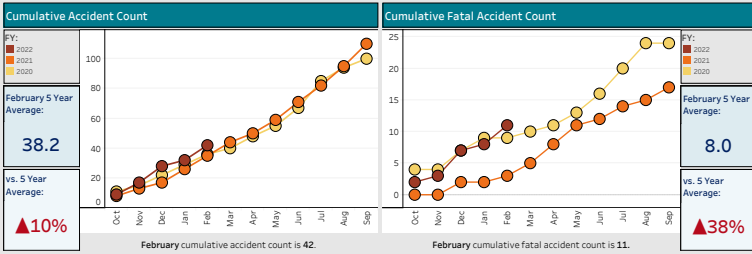
Federal Aviation Administration

Filters: Report Month: Feb 2022 Click on icon for help Click to view Fiscal Year Briefing Tab

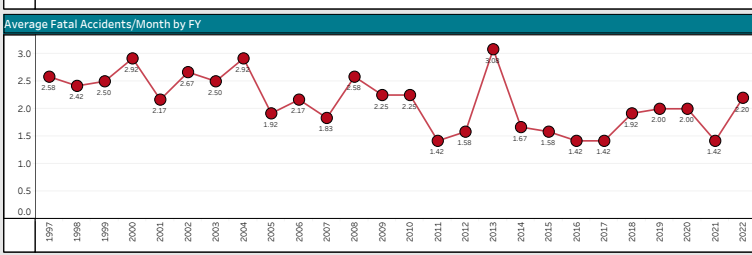
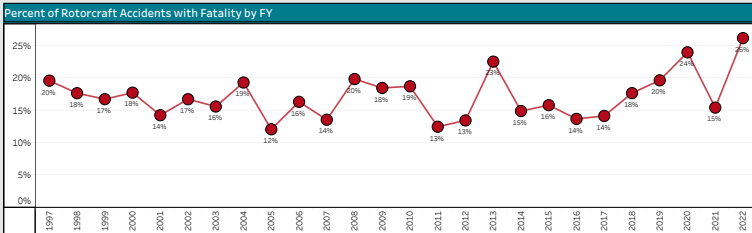
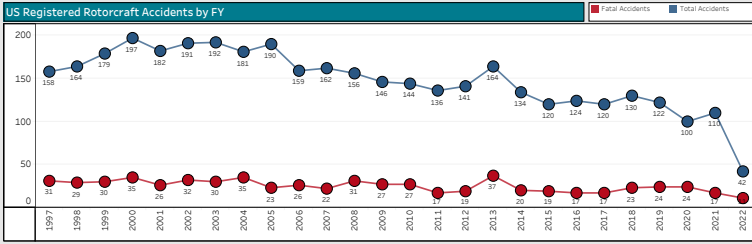
Estimated Rotorcraft Accident Rate by FY 10 Year Lookback - Rates per 100,000 Hours			Estimated Rotorcraft Fatal Rate by FY 10 Year Lookback - Rates per 100,000 Hours			Estimated Rotorcraft Fatality Rate by FY 10 Year Lookback - Rates per 100,000 Hours		
Current:	Same time, previous FY:	Best full FY rate:	Current:	Same time, previous FY:	Best full FY rate:	Current:	Same time, previous FY:	Best full FY rate:
3.73	3.21	3.61	0.98	0.28	0.51	1.69	0.64	0.87



	Accident Rates										Learn More		Fatal Rates										Learn More			
	2013	2014	2015	2016	2017	2018	2019	2020	2021	2022	10 Yr. Avg.	Avg +/- 1 Std. Dev.	2013	2014	2015	2016	2017	2018	2019	2020	2021	2022	10 Yr. Avg.	Avg +/- 1 Std. Dev.		
Accident Rate	5.56	4.19	3.64	3.96	3.61	4.45	4.07	4.15	3.78	3.73	4.15	3.62	4.67	1.25	0.62	0.58	0.54	0.51	0.79	0.80	1.00	0.58	0.98	0.72	0.49	0.95
Fatal Accident Rate	2.51	0.99	0.94	1.02	0.87	1.71	1.64	1.99	1.17	1.69	1.40	0.88	1.91	2.51	0.99	0.94	1.02	0.87	1.71	1.64	1.99	1.17	1.69	1.40	0.88	1.91

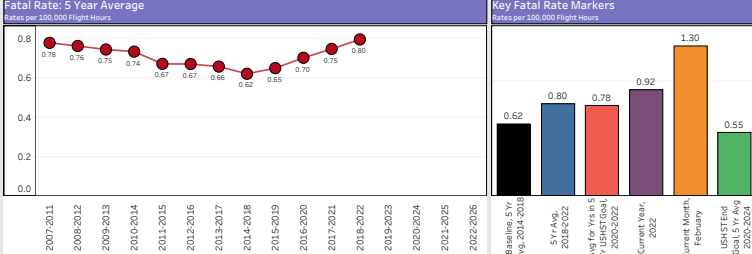


Select a FY Range to view for charts below FY Range: From 1996



U.S. Helicopter Safety Team (USHST) Calendar Year Metrics

USHST Current Goal: Reduce 5 Year Average Fatal Accident Rate to .55.





Federal Aviation
Administration

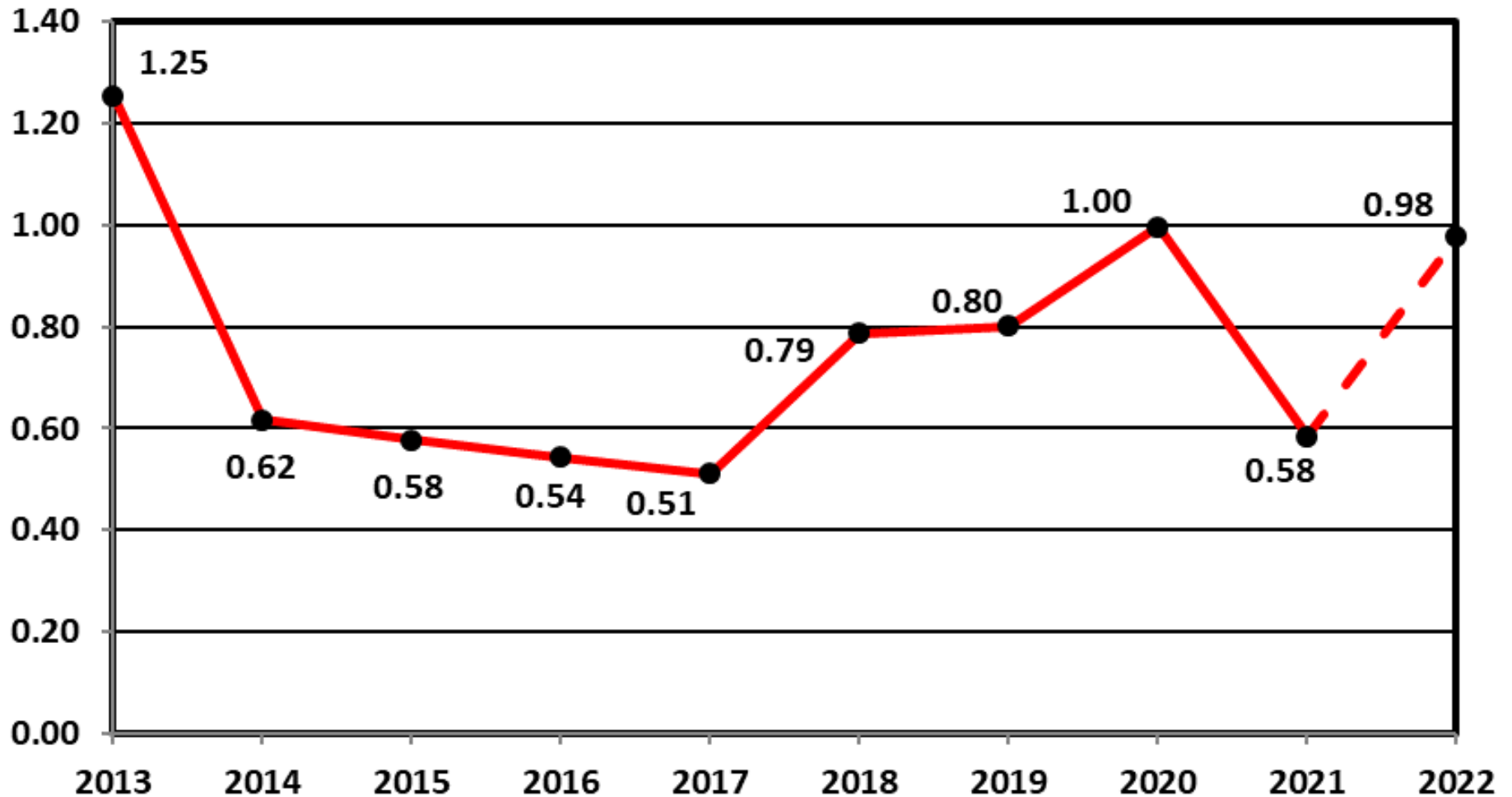
Fleet Safety Section, AIR-723

Rotorcraft Monthly Accident Briefing

February 2022

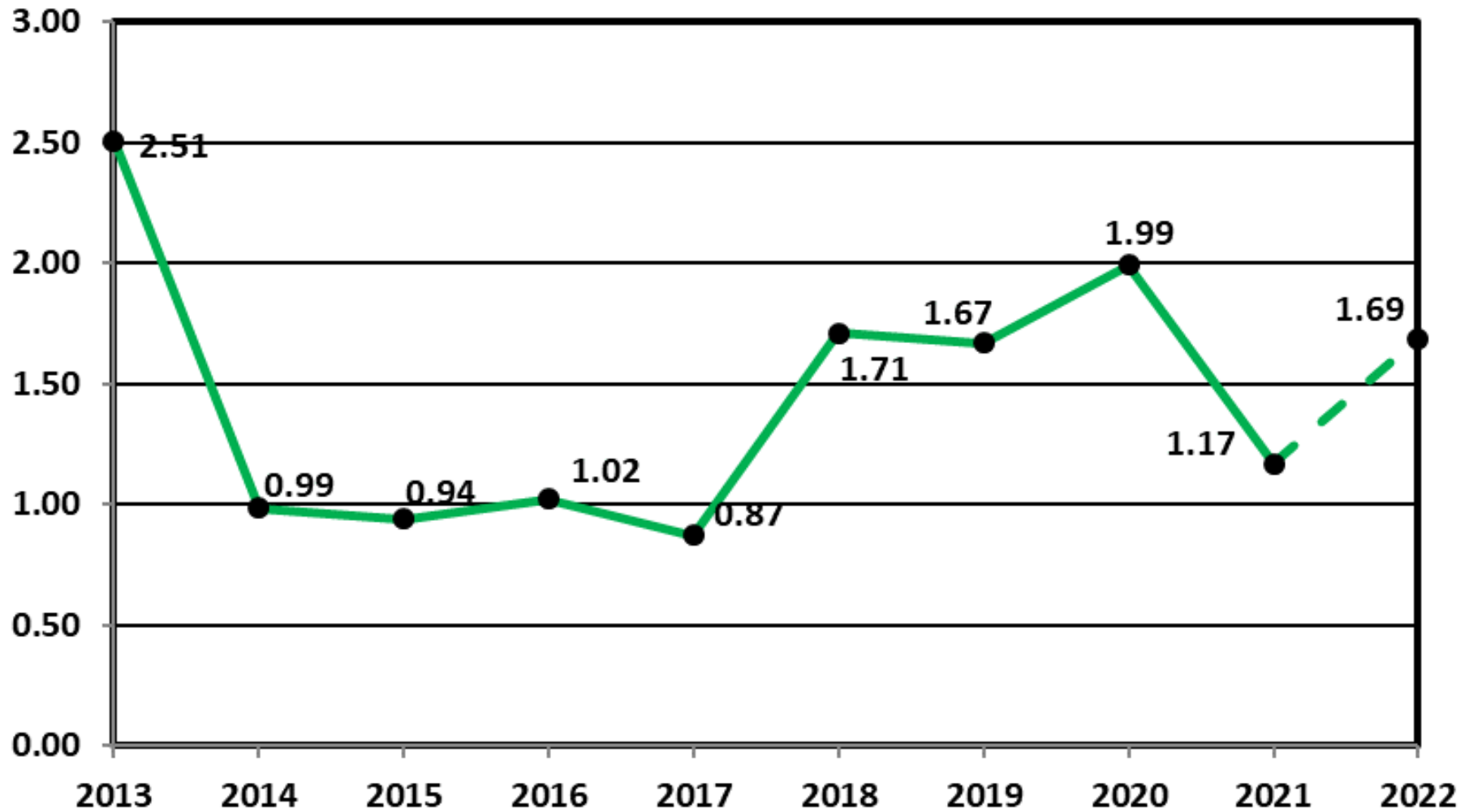


Estimated U.S. Rotorcraft FATAL Accident Rate by FY 10 Year Lookback – Rates per 100,000 Hours



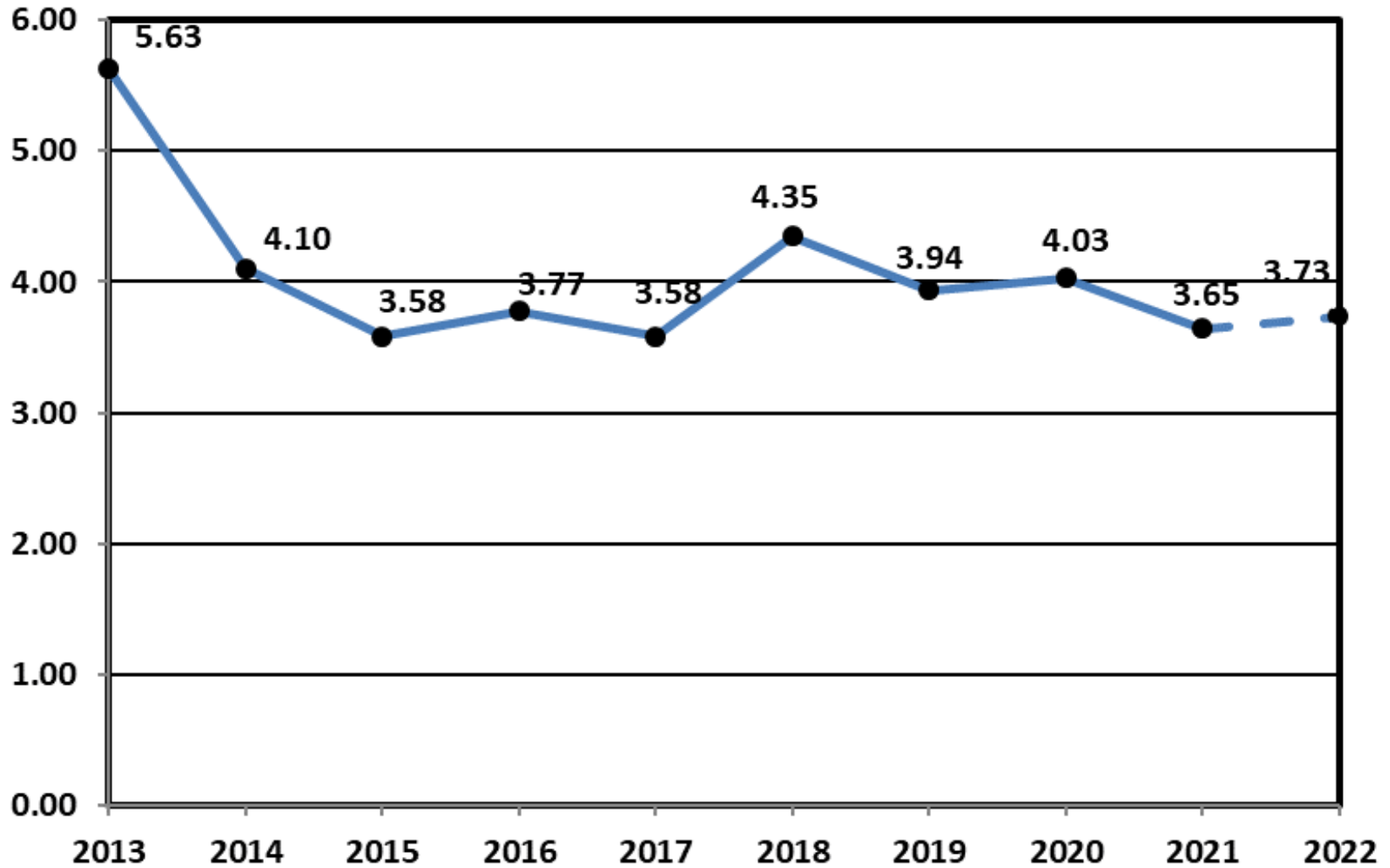


Estimated U.S. Rotorcraft Fatality Rate by FY 10 Year Lookback – Rates per 100,000 Hours





Estimated U.S. Rotorcraft Accident Rate by FY 10 Year Lookback – Rates per 100,000 Hours



FY 22 – U.S. Registered Rotorcraft Event Counts

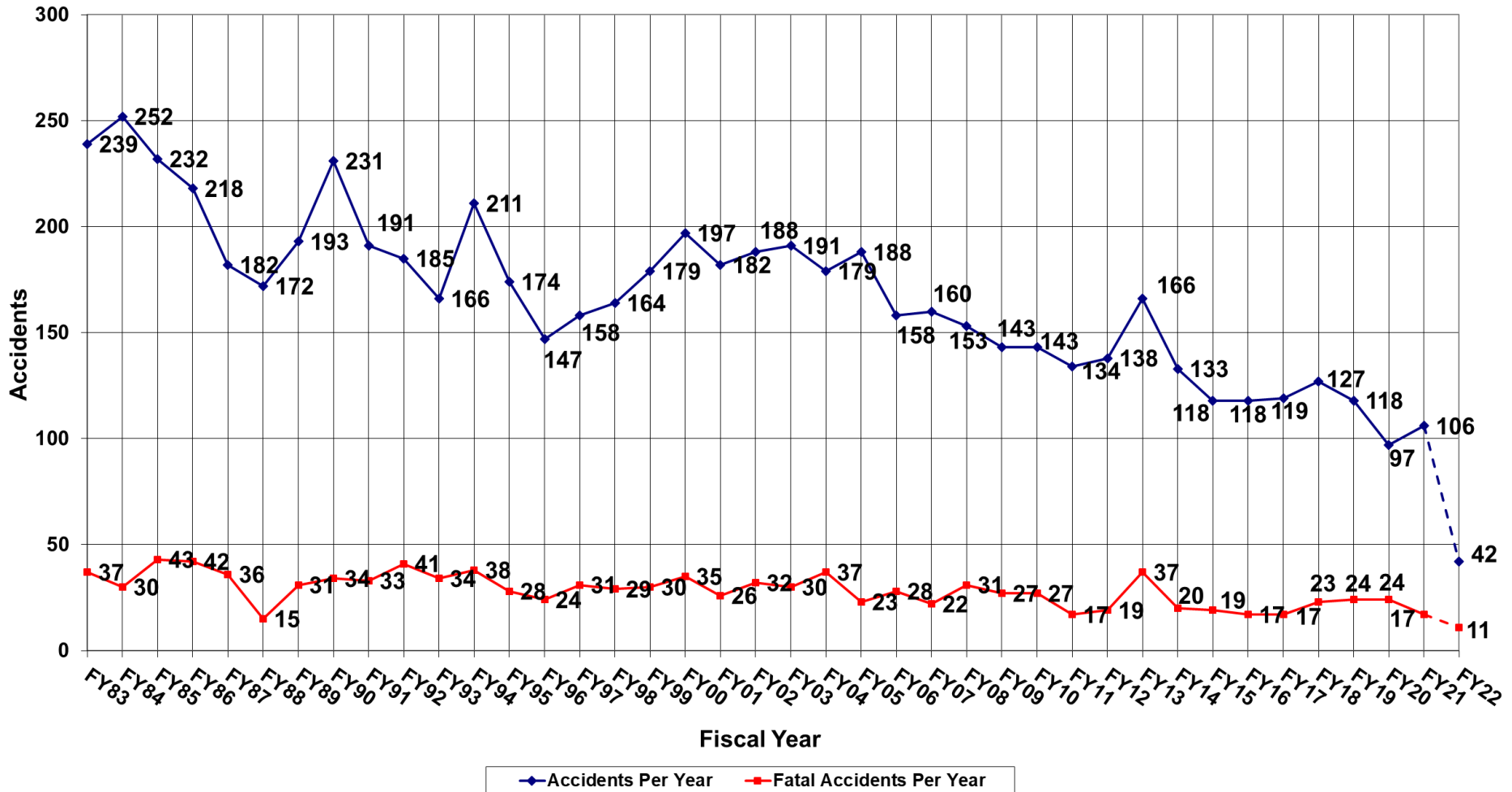
	Oct	Nov	Dec	Jan	Feb	Mar	Apr	May	Jun	Jul	Aug	Sep	YTD
Accidents:	9	8	11	4	10								42
Fatal Acc:	2	1	4	1	3								11
Fatalities:	3	1	7	2	6								19
Same time period, previous FY: 35 Accidents, 3 Fatal Accidents, 7 Fatalities													

Data Source: FAA, NTSB Databases. Includes only events classified as accidents and does not include incidents. The accident numbers for each month of the Fiscal Year may vary from the previous monthly briefing based on analysis between FAA and NTSB databases for the specified month. The NTSB database may include accidents that were not reported to this office resulting in slightly different numbers.

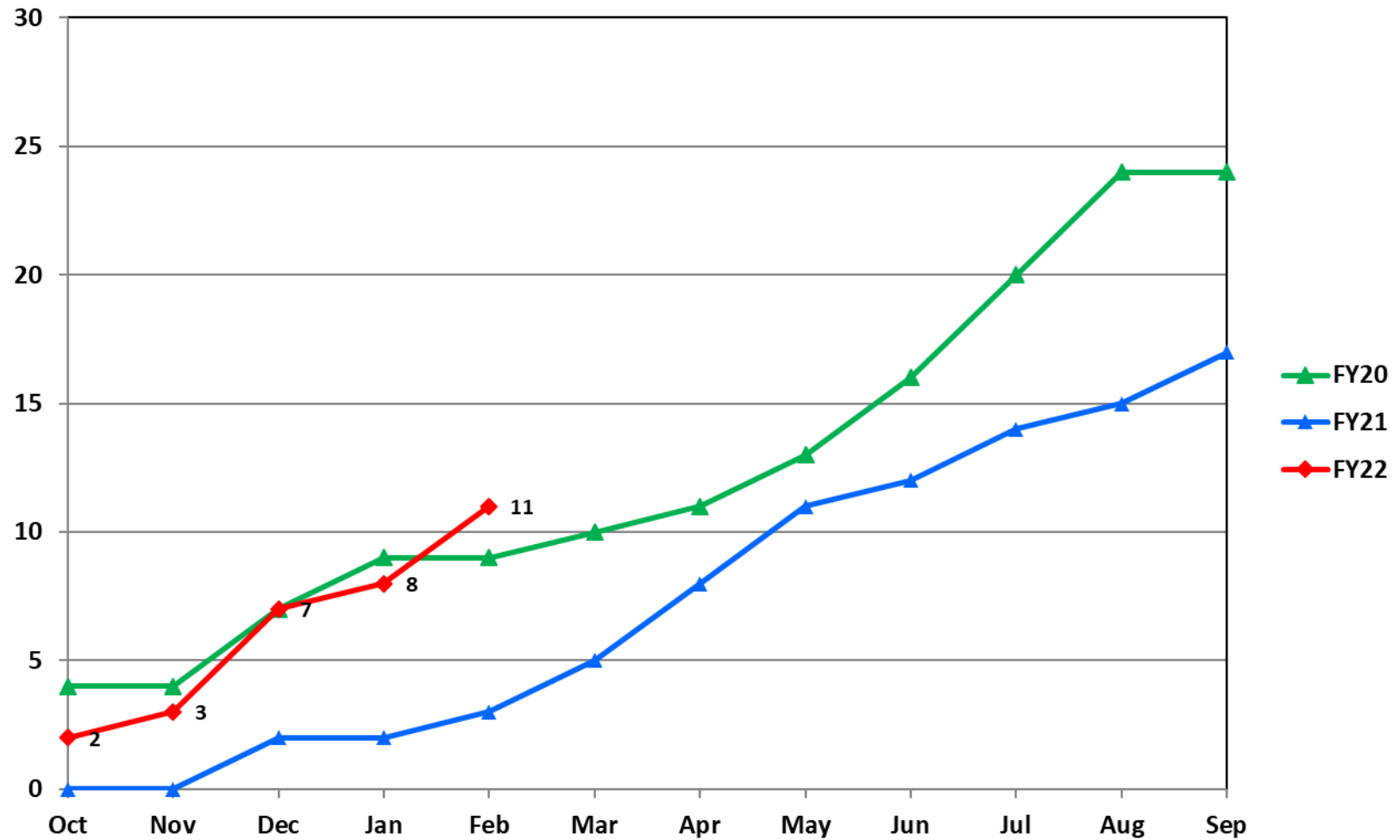
Estimated Rates by Month (per 100,000 flight hours)

	Oct	Nov	Dec	Jan	Feb	Mar	Apr	May	Jun	Jul	Aug	Sep	YTD
Accidents:	3.38	3.52	5.53	1.98	4.33								3.73
Fatal Acc:	0.75	0.44	2.01	0.49	1.3								0.98
Fatalities:	1.13	0.44	3.52	0.99	2.6								1.69

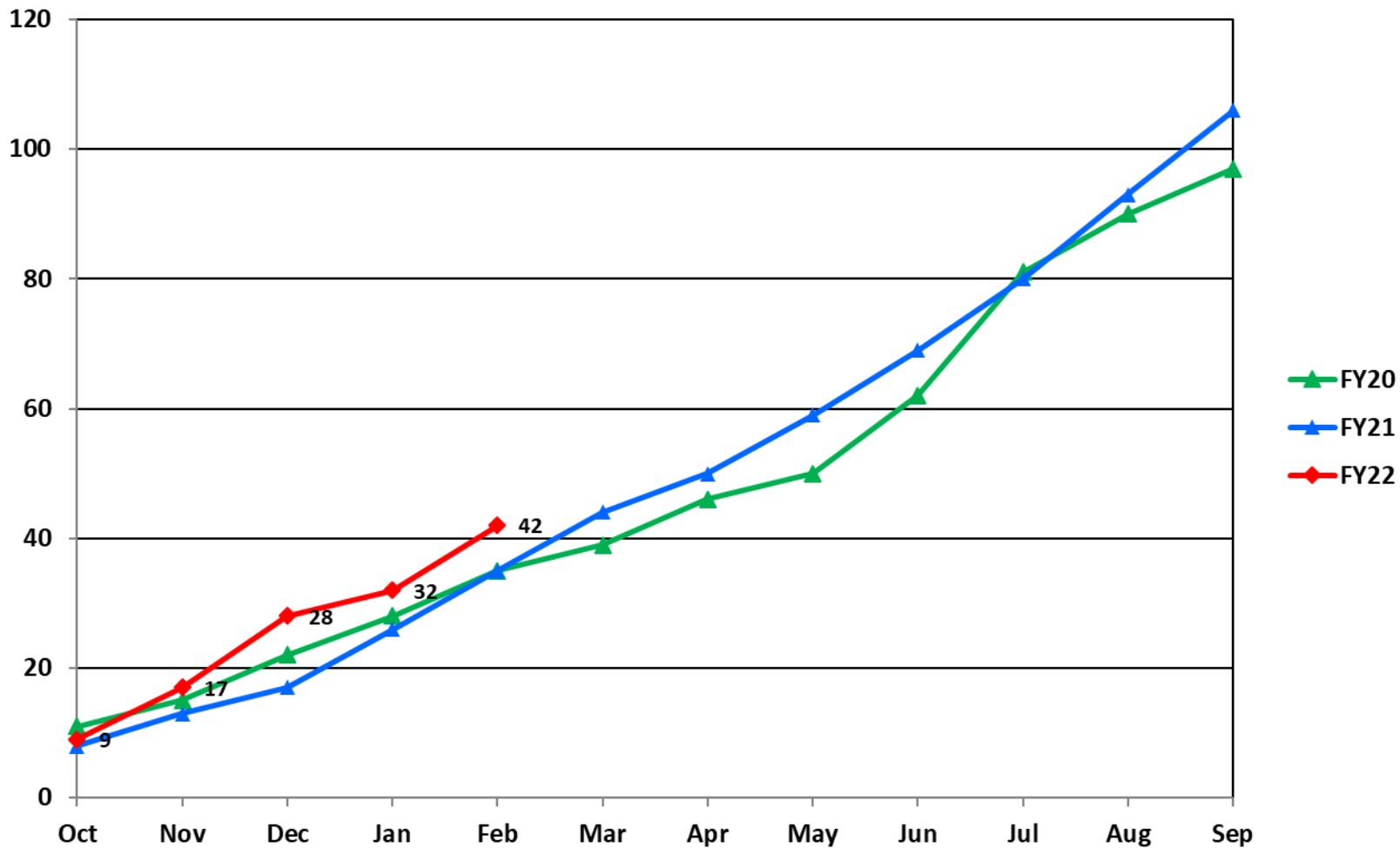
U.S. Registered Rotorcraft Accidents FY83 - FY22



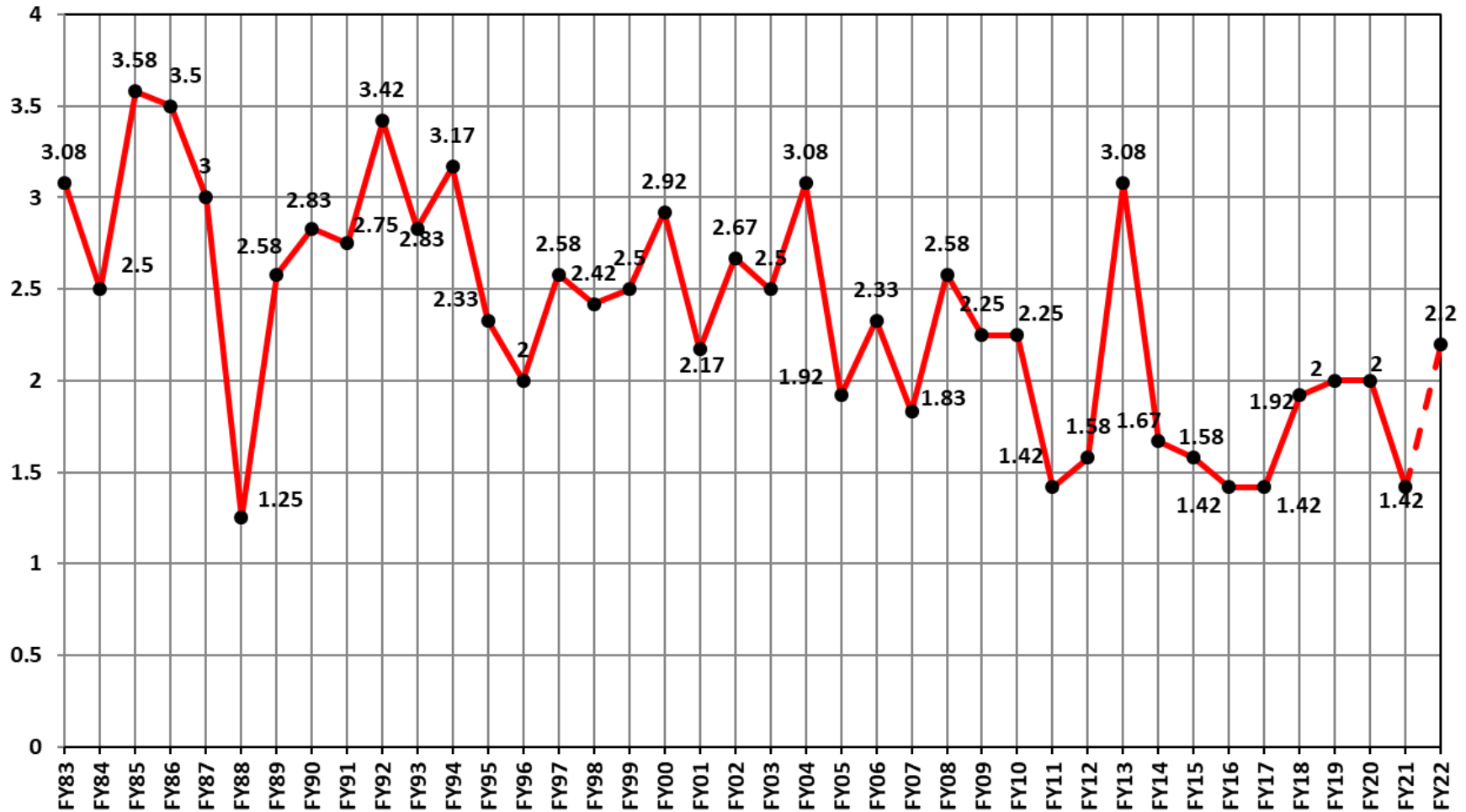
U.S. Registered Rotorcraft Cumulative Fatal Accident Count: FY19 - FY22



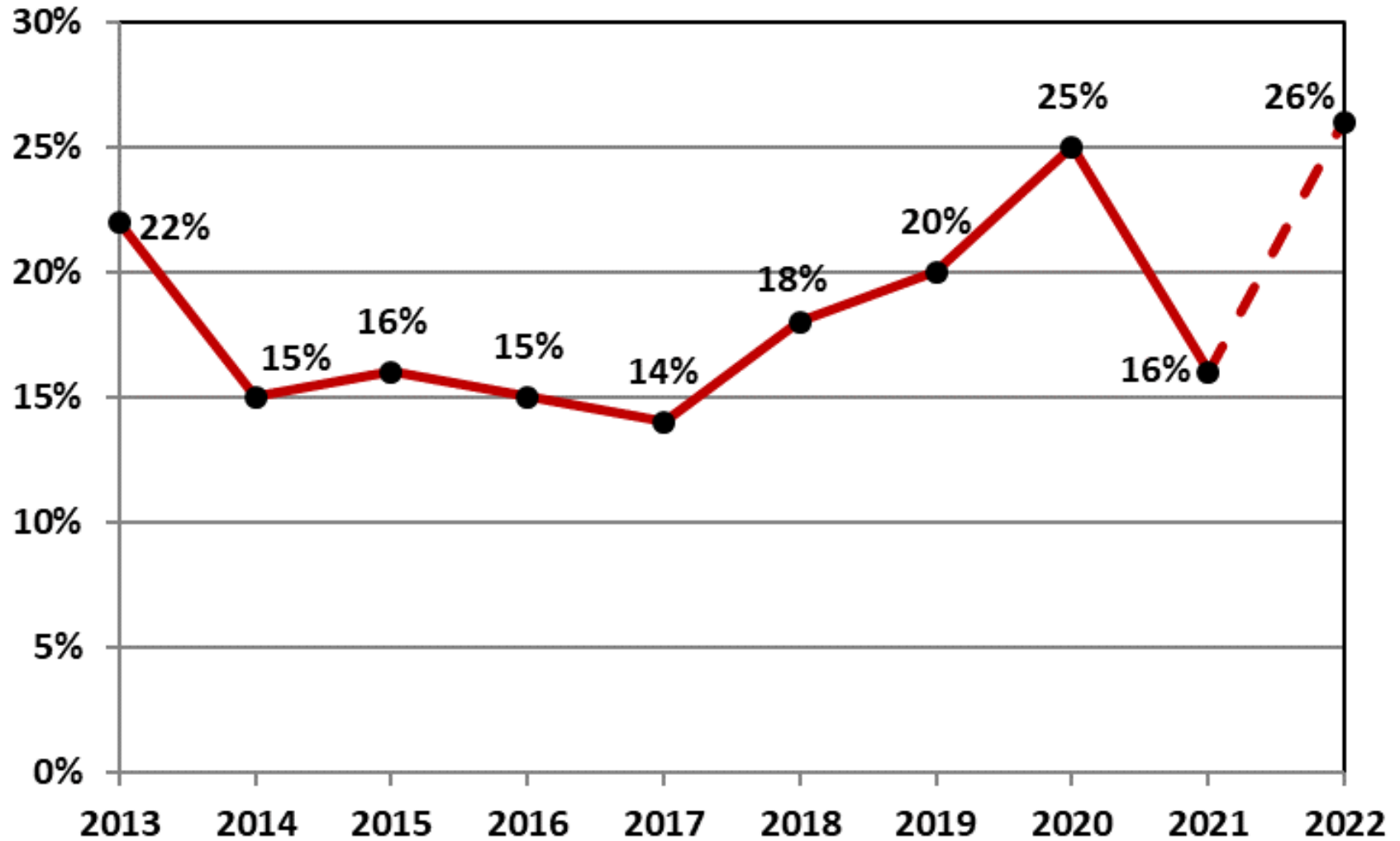
U.S. Registered Rotorcraft Cumulative Accident Count: FY19 - FY22



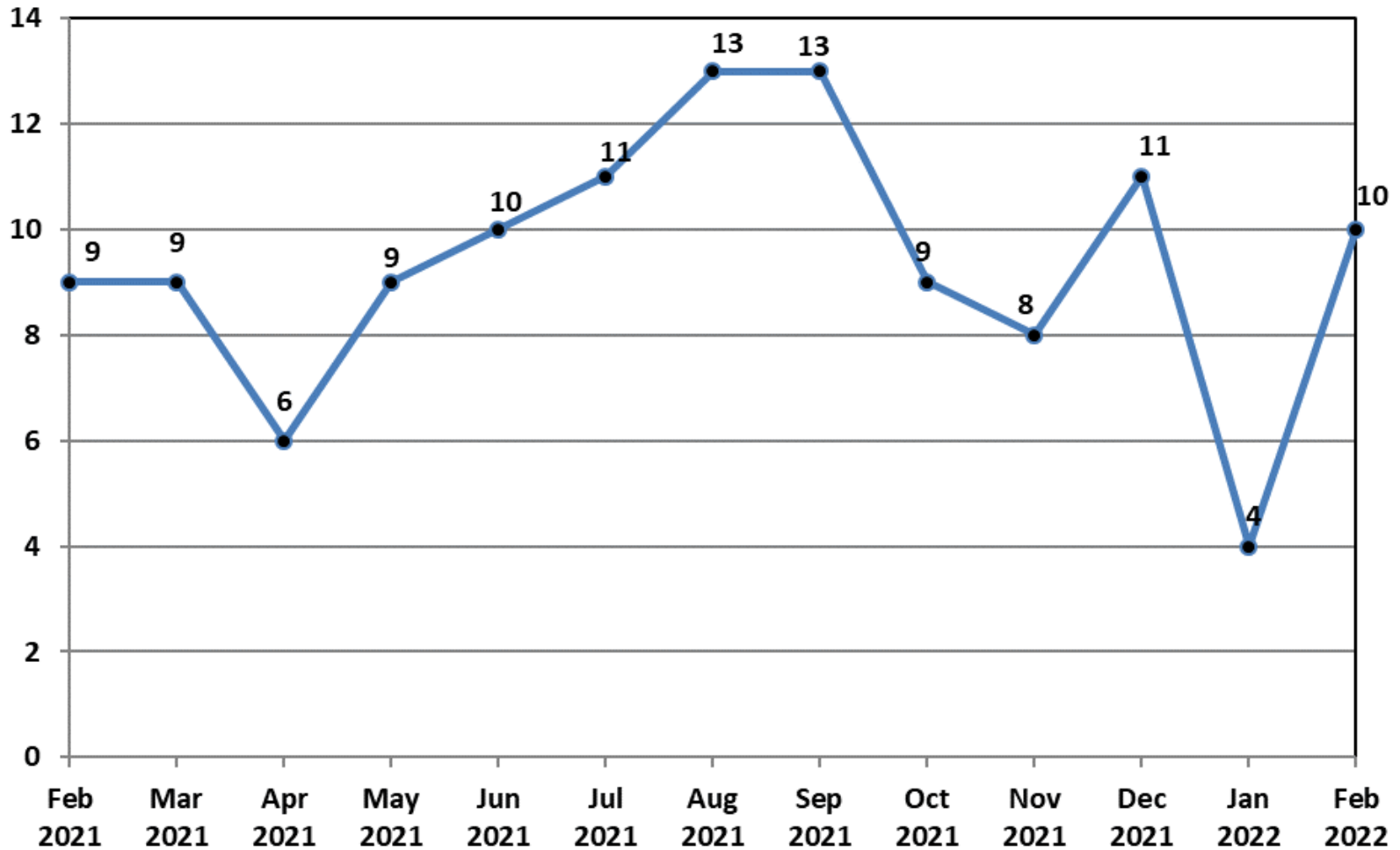
U.S. Registered Rotorcraft Average Fatal Accidents Per Month, FY83-FY22



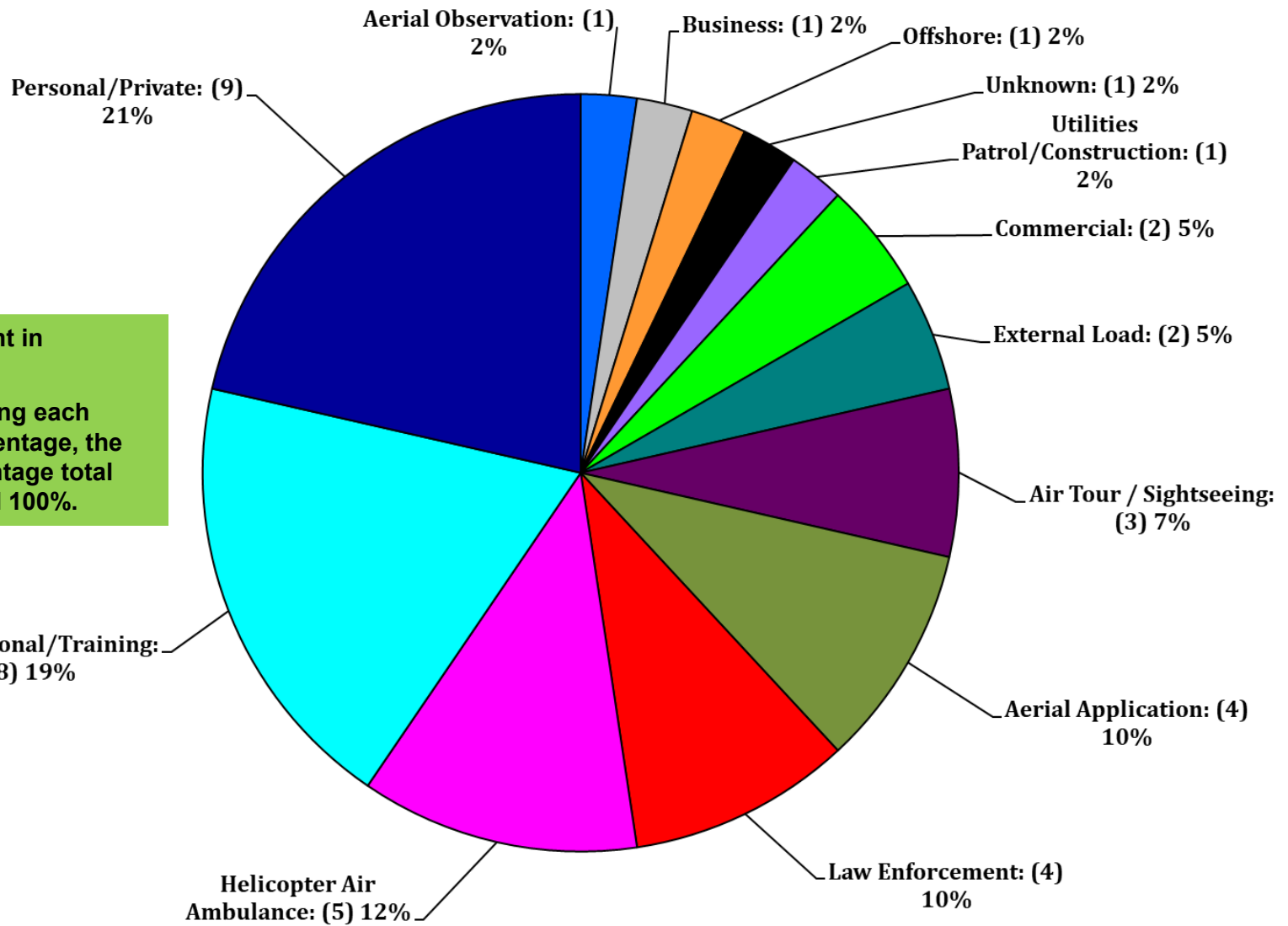
% of U.S. Rotorcraft Accidents with a Fatality (FY22, Oct - Feb)



U.S. Registered Rotorcraft 13 Month Rolling Accident Count



FY 22 – Total Accidents by Industry (Oct - Feb)

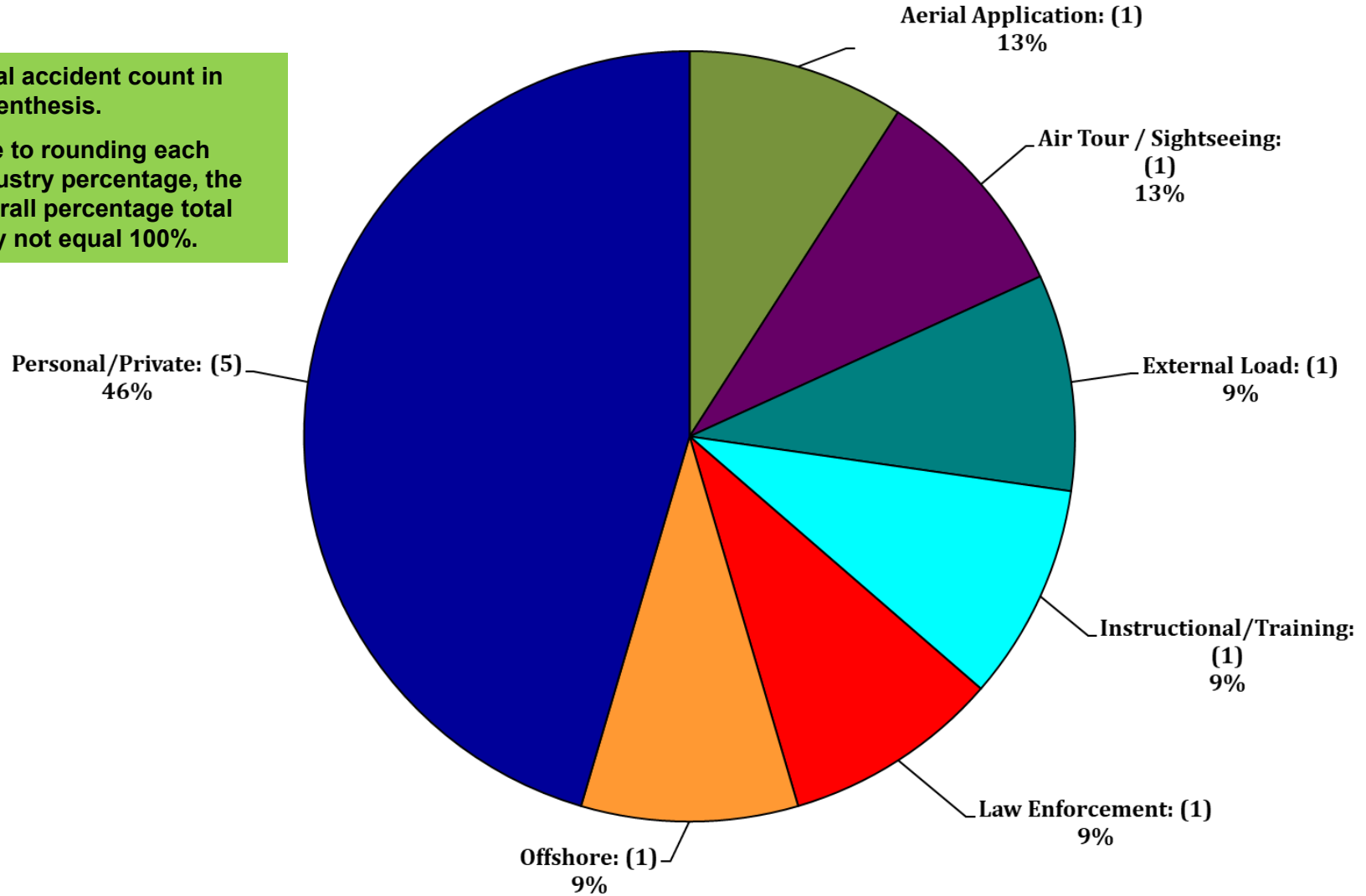


- Accident count in parenthesis.
- Due to rounding each Industry percentage, the overall percentage total may not equal 100%.



FY 22 – Total FATAL Accidents by Industry (Oct - Feb)

- Fatal accident count in parenthesis.
- Due to rounding each Industry percentage, the overall percentage total may not equal 100%.



FY 22 – U.S. Registered Fatal Rotorcraft Accidents

- 2-22-22 – Sikorsky S-61N, N615CK, Part 133, Kekaha, Kauai, HI, 4 fatal
 - External load flight to retrieve inert training torpedoes from the Pacific Ocean
 - Was over land and near ordnance recovery area about 200 ft AGL; pitched nose down
 - Witnesses reported crashed in near vertical attitude **NTSB: ANC22FA018**

- 2-19-22 – MDHI 500N, N521HB, Public Aircraft, Newport Beach, CA, 1 fatal
 - Night law enforcement flight; orbiting to keep infrared camera on ground altercation
 - A/c yawed right; continued rotation until water impact **NTSB: WPR22FA101**

- 2-15-22 – Northwest Helicopters LLC UH-1H, N72297, Part 137, Coalinga, CA, 1 fatal
 - Night aerial application flight; ceased spraying when wind increased, departed area
 - A/c wreckage found 6 miles SE of last known position **NTSB: WPR22FA098**

- 1-14-22 – Bell 407, N167RL, Part 135, Houma, LA, 2 fatal
 - On-demand flight with 1 passenger
 - Witness observed a/c in nose down descent into trees **NTSB: CEN22FA100**

FY 22 – U.S. Registered Fatal Rotorcraft Accidents

- 12-30-21 – Robinson R44, N442VB, Part 91, Bronson, FL, 4 fatal
 - Personal use flight; night departure from private residence
 - Crashed 9 minutes after departure **NTSB: ERA22FA098**

- 12-30-21 – Bell 206B, N8AU, Part 91, Livingston, TX, 1 fatal, 1 serious, 2 minor
 - Sightseeing flight; hovering over trees near home of one of the pax
 - Began uncontrolled right rotation, struck tree, crashed **NTSB: CEN22FA086**

- 12-29-21 – Robinson R44, N544SC, Part 91, Cosby, TN, 1 fatal, 1 serious
 - Personal use flight; departed w/ leased a/c from service center; deteriorating weather
 - 12 min later, a/c observed flying out of fog/hitting trees **NTSB: ERA22FA096**

- 12-14-21 – Bell 407, N150AS, Part 91, LaPlace, LA, 1 fatal
 - Personal use flight; flying 75 to 175 ft AGL above I-10 enroute to New Orleans
 - Crashed after striking guy wire above bridge **NTSB: CEN22FA073**

FY 22 – U.S. Registered Fatal Rotorcraft Accidents

- 11-28-21 – Bell 206B, N59600, Part 91, Perry, OK, 1 fatal, 1 serious
 - Personal use flight; control loss while at 50 ft AGL/25 knots
 - Unable to recover control, crashed, post-crash fire **NTSB: CEN22FA053**
- 10-10-21 – Robinson R44, N637HP, Part 91, Cornwall, NY, 1 fatal
 - Personal use flight; 70 minutes into planned route from Glenn Falls to Ronkonkoma
 - Over Hudson River, made series of turns before crash **NTSB: ERA22FA010**
- 10-1-21 – Robinson R22, N412TL, Part 91, Chandler, AZ, 2 fatal
 - Instructional/training flight; traffic pattern at Chandler Municipal Airport
 - Midair collision w/Piper PA-28-181 airplane **NTSB: WPR22FA001**



FY 22 - US Rotorcraft Accidents By Model

MFR	Model	Registered U.S. Fleet Size	Percentage of Total U.S. Fleet	Number of FY22 U.S. Registered Accidents	Percentage of Total FY22 U.S. Registered Accidents
Airbus Helicopters	AS350 (H125)	927	7%	2	5%
	BK117 (H145)	213	2%		
	EC120 (H120)	89	1%		
	EC130 (H130)	264	2%		
	EC135 (H135)	341	3%	1	2%

Only models that comprise at least 1% of U.S. registered rotorcraft are listed unless an accident has occurred.

*Fleet size based on analysis of rotorcraft on FAA registry as of March 2021



FY 22 - US Rotorcraft Accidents By Model

MFR	Model	Registered U.S. Fleet Size	Percentage of Total U.S. Fleet	Number of FY22 U.S. Registered Accidents	Percentage of Total FY22 U.S. Registered Accidents
Bell	205	52	< 1%	1	2%
	206Bs	912	7%	3	7%
	206Ls	557	4%	2	5%
	212	83	1%		
	407	791	6%	3	7%
	412	86	1%		
	429	120	1%	2	5%
	505	101	1%		

Only models that comprise at least 1% of U.S. registered rotorcraft are listed unless an accident has occurred.

*Fleet size based on analysis of rotorcraft on FAA registry as of March 2021

FY 22 - US Rotorcraft Accidents By Model

MFR	Model	Registered U.S. Fleet Size	Percentage of Total U.S. Fleet	Number of FY22 U.S. Registered Accidents	Percentage of Total FY22 U.S. Registered Accidents
Robinson	R-22	832	7%	4	10%
	R-44	1,686	13%	7	17%
	R-66	306	2%	1	2%

Only models that comprise at least 1% of U.S. registered rotorcraft are listed unless an accident has occurred.

*Fleet size based on analysis of rotorcraft on FAA registry as of March 2021



FY 22 - US Rotorcraft Accidents By Model

MFR	Model	Registered U.S. Fleet Size	Percentage of Total U.S. Fleet	Number of FY22 U.S. Registered Accidents	Percentage of Total FY22 U.S. Registered Accidents
Sikorsky	S-61	92	1%	1	2%
	S-76	228	2%		
	S-92	89	1%		

Only models that comprise at least 1% of U.S. registered rotorcraft are listed unless an accident has occurred.

*Fleet size based on analysis of rotorcraft on FAA registry as of March 2021



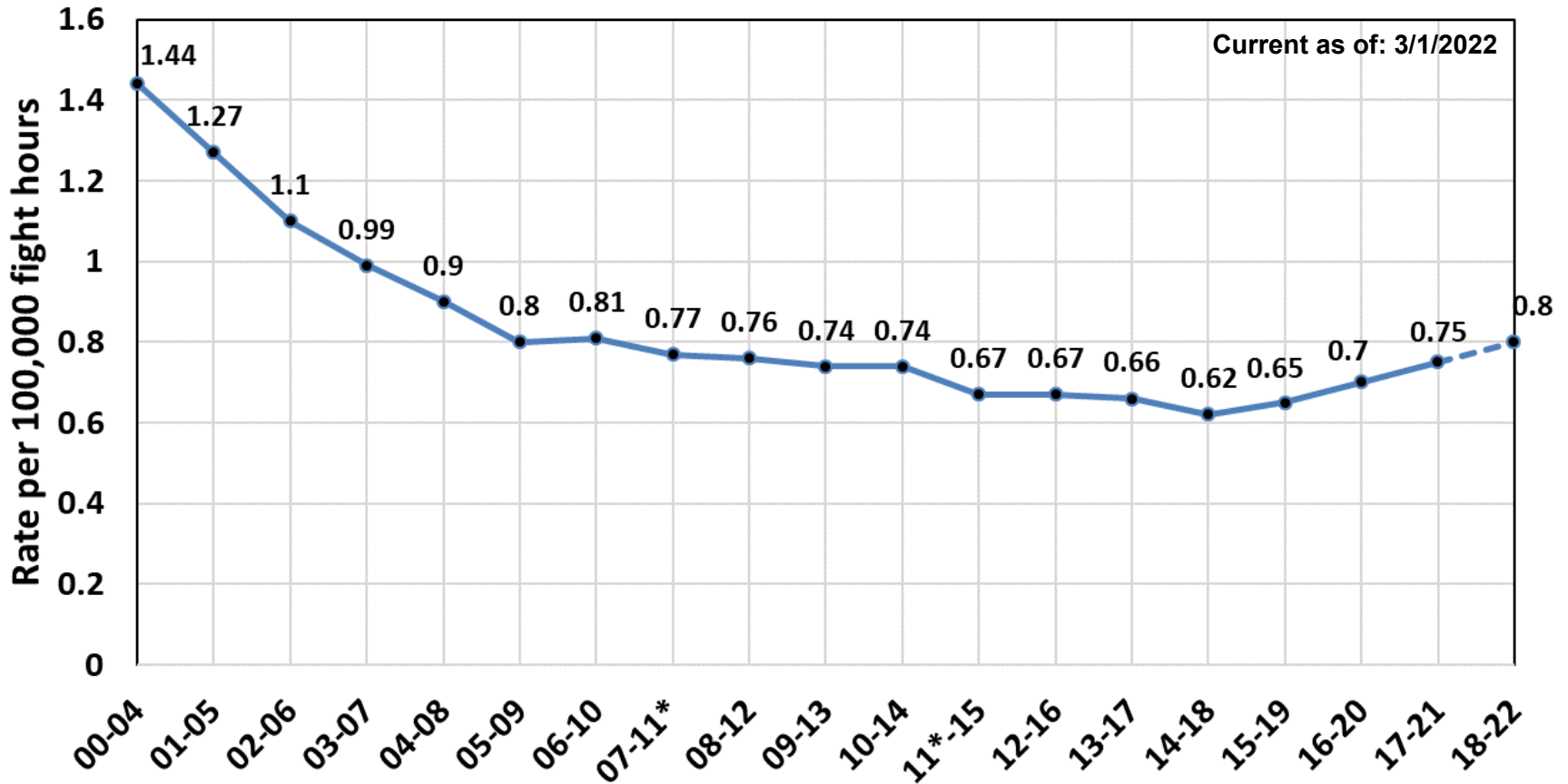
FY 22 - US Rotorcraft Accidents By Model

MFR	Model	Registered U.S. Fleet Size	Percentage of Total U.S. Fleet	Number of FY22 U.S. Registered Accidents	Percentage of Total FY22 U.S. Registered Accidents
Enstrom	280	122	1%		
	480	65	1%		
	F28	157	1%		
Hiller	UH-12/H-23	273	2%	1	2%
Leonardo (formerly Agusta Westland)	A109	166	1%		
	A119	136	1%		
	AW139	129	1%		
	AW169	6	< 1%	1	2%
MDHI	369	638	5%	4	10%
Restricted Category (all TCs)	HH-1/TH-1/UH-1	530	4%	2	5%
	OH-58	394	3%	2	5%
	H-60	229	2%		
Schweizer Rotorcraft Services Group	269/300/TH-55	487	4%	1	2%
Scott's Bell	47	523	4%	4	10%

Only models that comprise at least 1% of U.S. registered rotorcraft are listed unless an accident has occurred.

*Fleet size based on analysis of rotorcraft on FAA registry as of March 2021

U.S. Helicopter Safety Team (USHST) 5 Year Average Fatal Accident Rate (CY)



Goal: By 2025, reduce the 5 year average fatal accident rate to 0.55 per 100K hours

U.S. Helicopter Safety Team (USHST) Key Fatal Accident Rate Markers (CY)

