



Federal Aviation
Administration

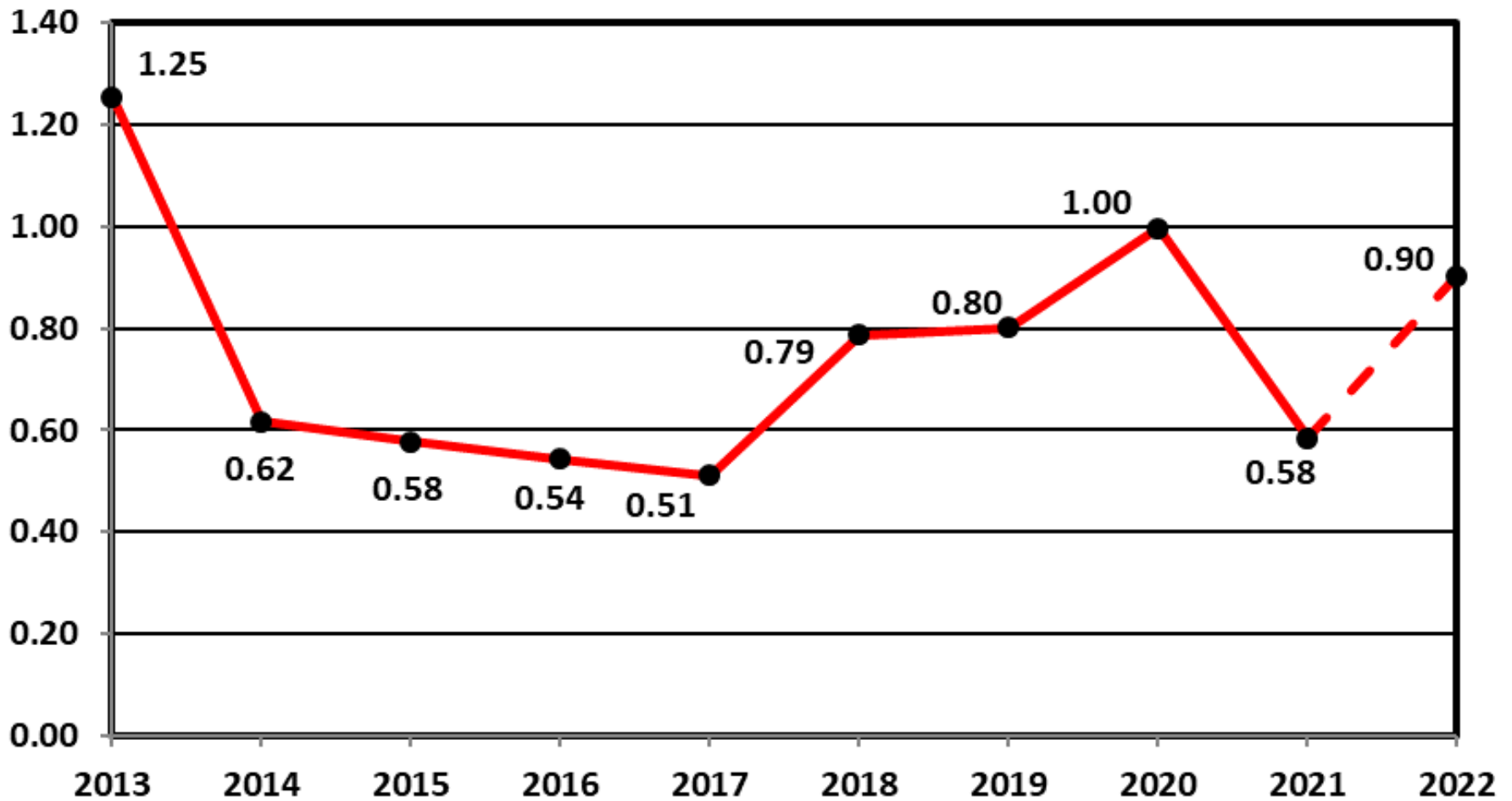
Fleet Safety Section, AIR-723

Rotorcraft Monthly Accident Briefing

Apr 2022

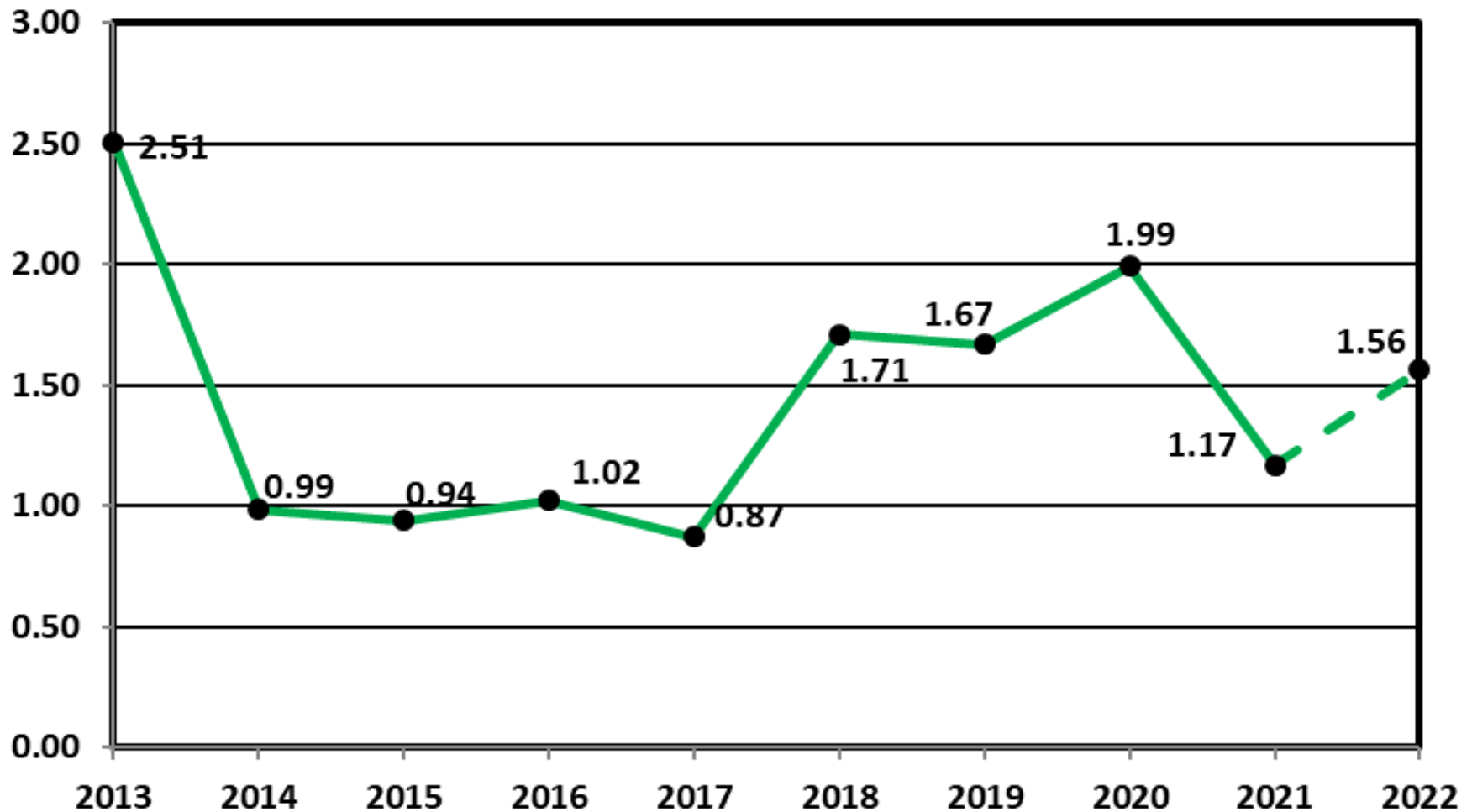


Estimated U.S. Rotorcraft FATAL Accident Rate by FY 10 Year Lookback – Rates per 100,000 Hours



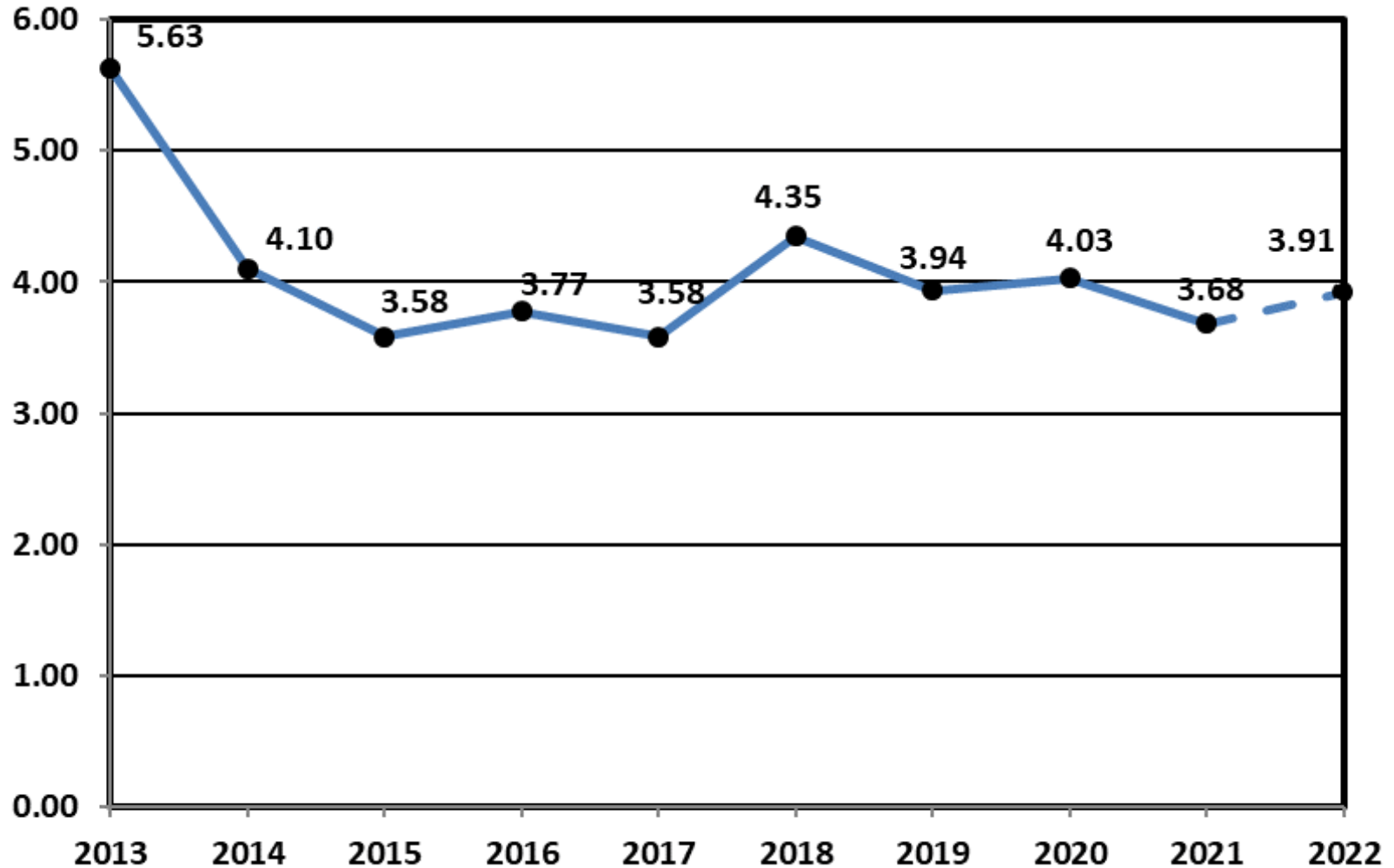


Estimated U.S. Rotorcraft Fatality Rate by FY 10 Year Lookback – Rates per 100,000 Hours





Estimated U.S. Rotorcraft Accident Rate by FY 10 Year Lookback – Rates per 100,000 Hours



FY 22 – U.S. Registered Rotorcraft Event Counts

	Oct	Nov	Dec	Jan	Feb	Mar	Apr	May	Jun	Jul	Aug	Sep	YTD
Accidents:	9	8	11	4	9	11	13						65
Fatal Acc:	2	1	4	1	3	2	2						15
Fatalities:	3	1	7	2	6	4	3						26

Same time period, previous FY: 50 Accidents, 8 Fatal Accidents, 16 Fatalities

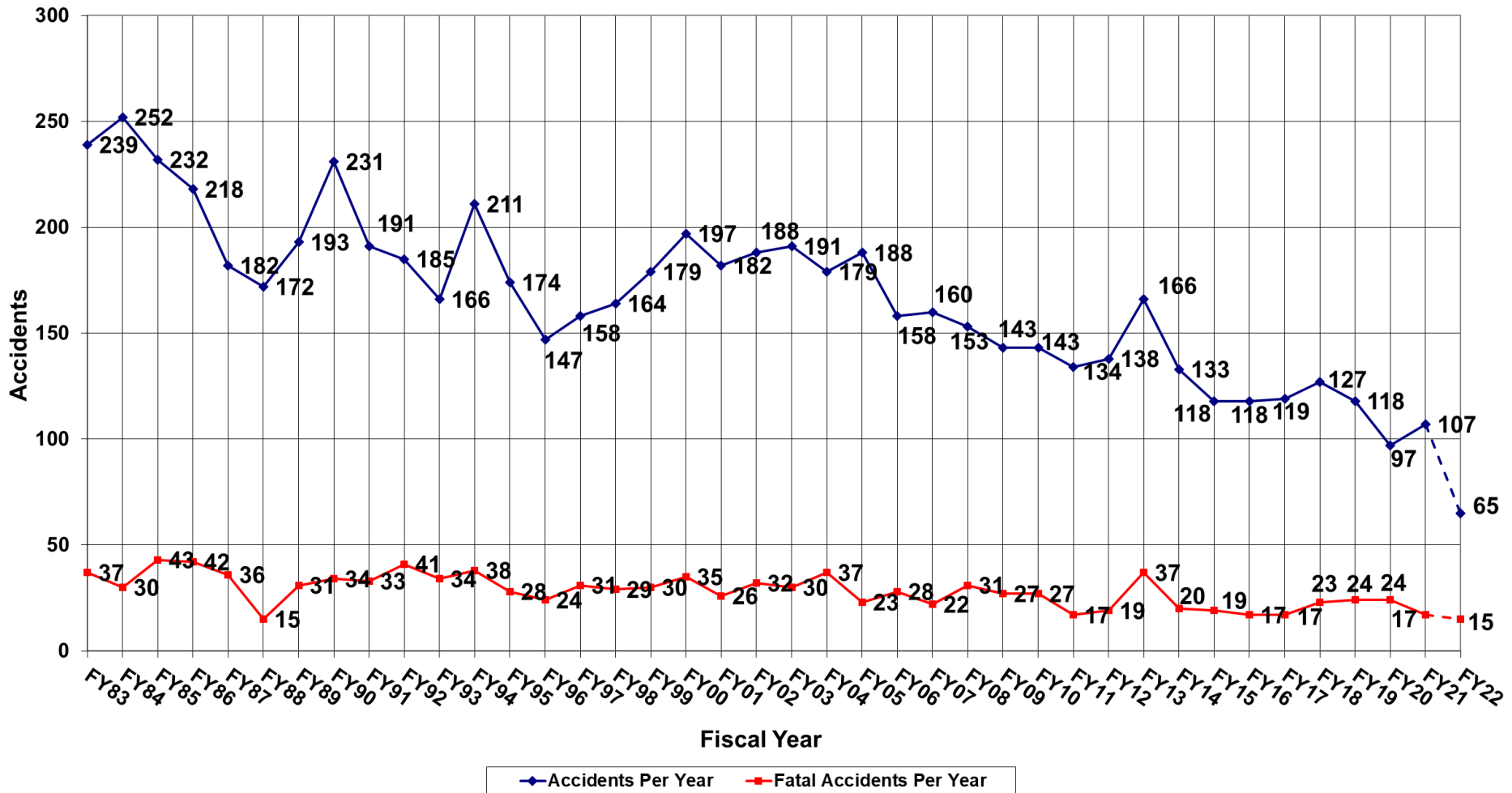
Data Source: FAA, NTSB Databases. Includes only events classified as accidents and does not include incidents. The accident numbers for each month of the Fiscal Year may vary from the previous monthly briefing based on analysis between FAA and NTSB databases for the specified month. The NTSB database may include accidents that were not reported to this office resulting in slightly different numbers.

Estimated Rates by Month (per 100,000 flight hours)

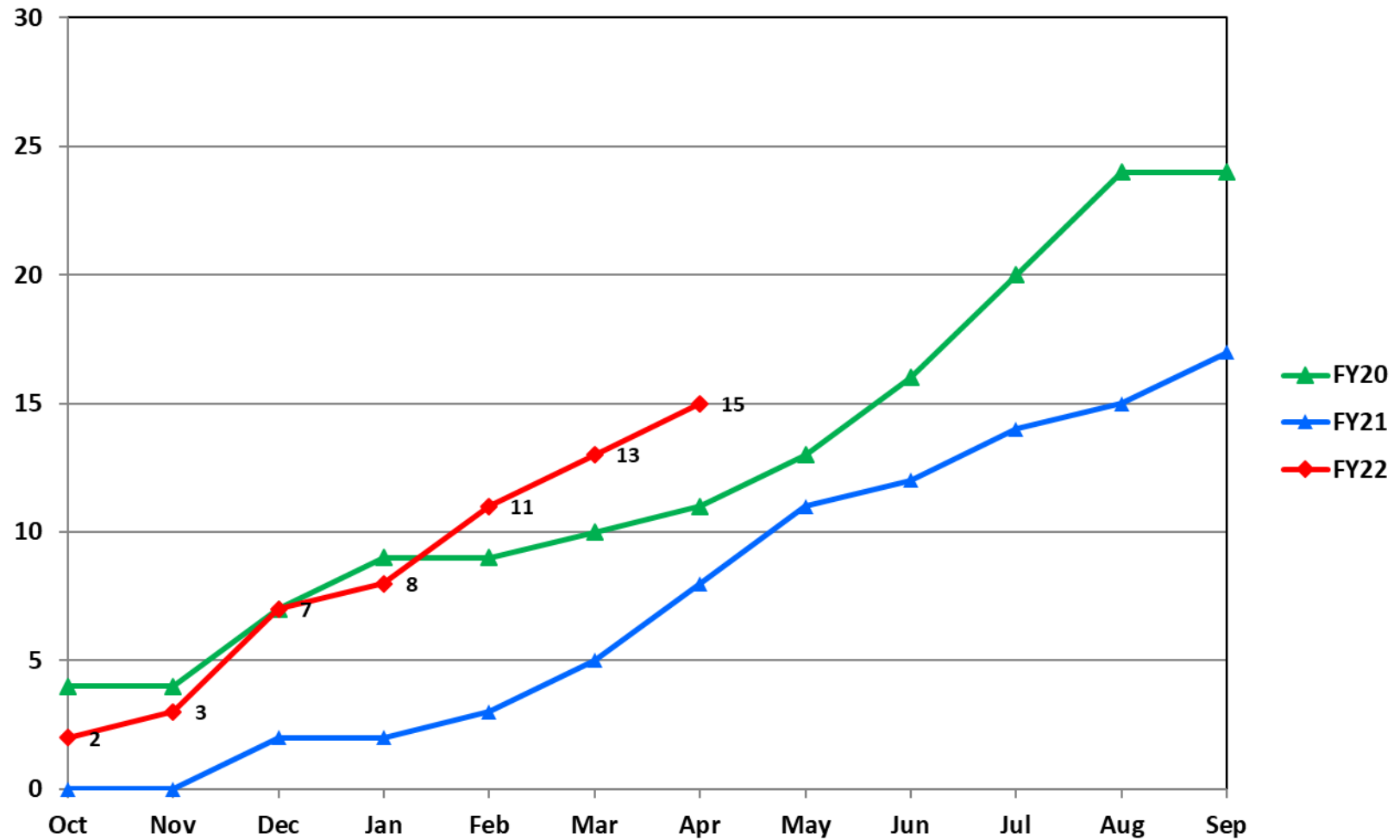
	Oct	Nov	Dec	Jan	Feb	Mar	Apr	May	Jun	Jul	Aug	Sep	YTD
Accidents:	3.38	3.52	5.53	1.98	3.90	4.13	4.82						3.91
Fatal Acc:	0.75	0.44	2.01	0.49	1.3	0.75	0.74						0.9
Fatalities:	1.13	0.44	3.52	0.99	2.6	1.5	1.11						1.56



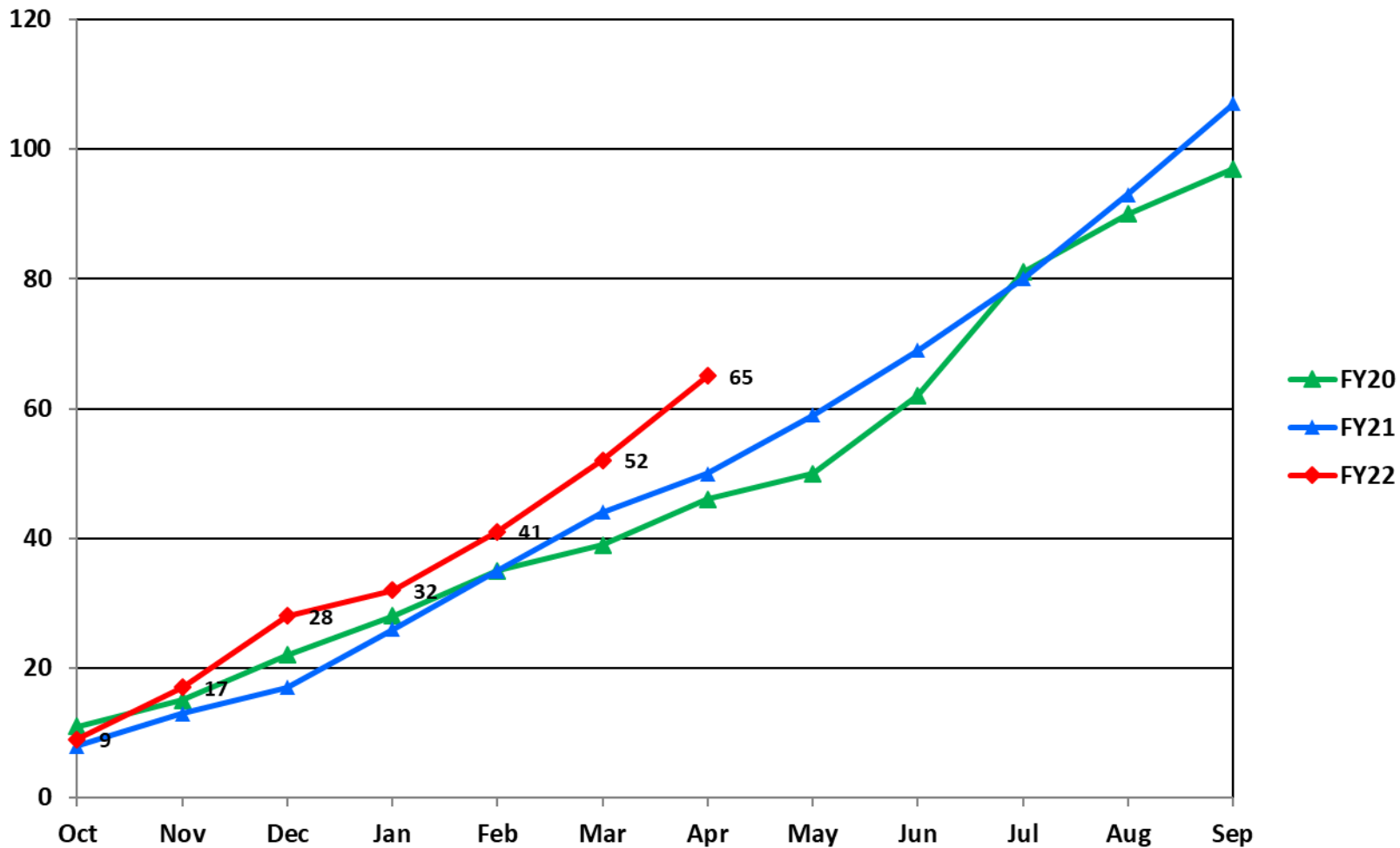
U.S. Registered Rotorcraft Accidents FY83 - FY22



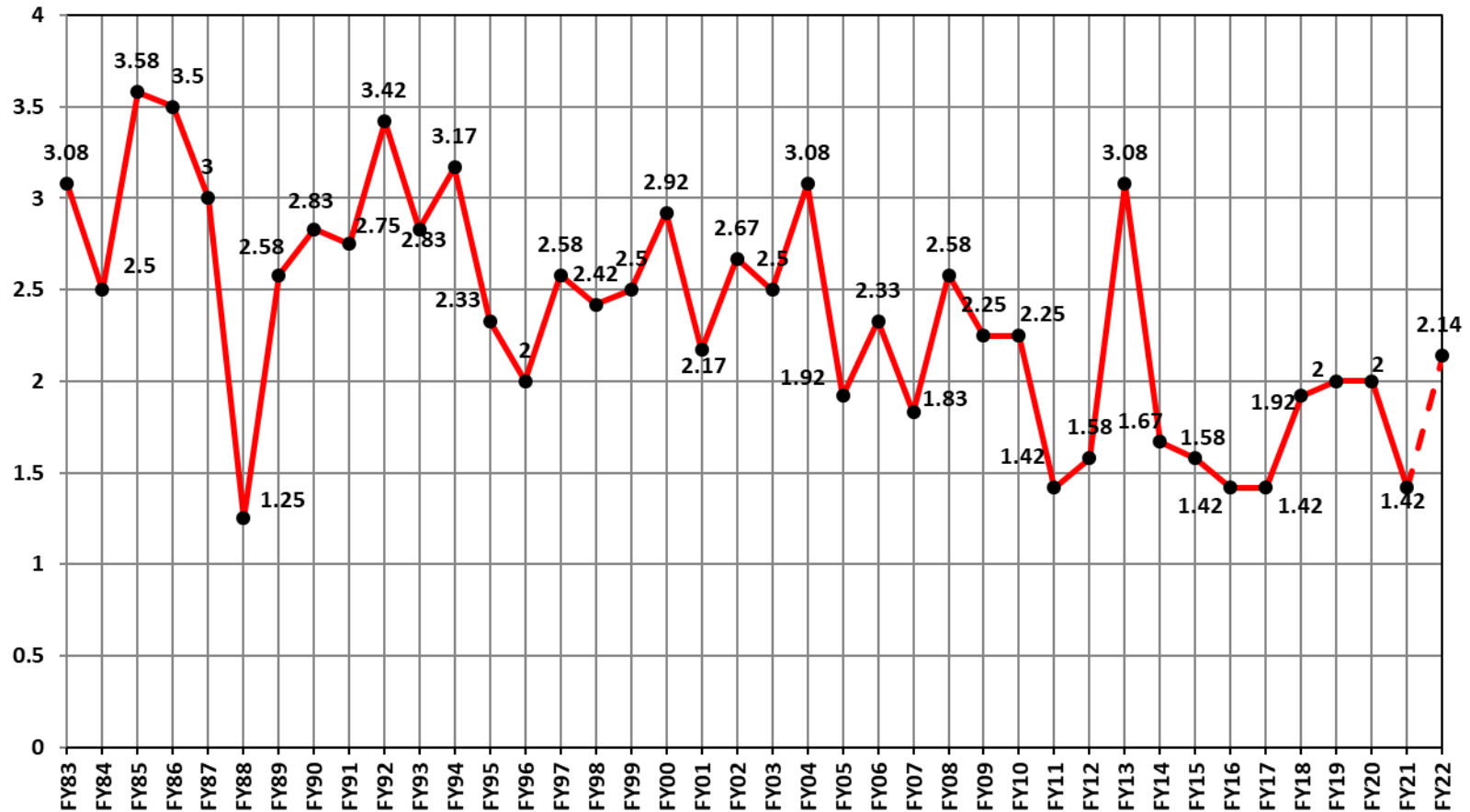
U.S. Registered Rotorcraft Cumulative Fatal Accident Count: FY19 - FY22



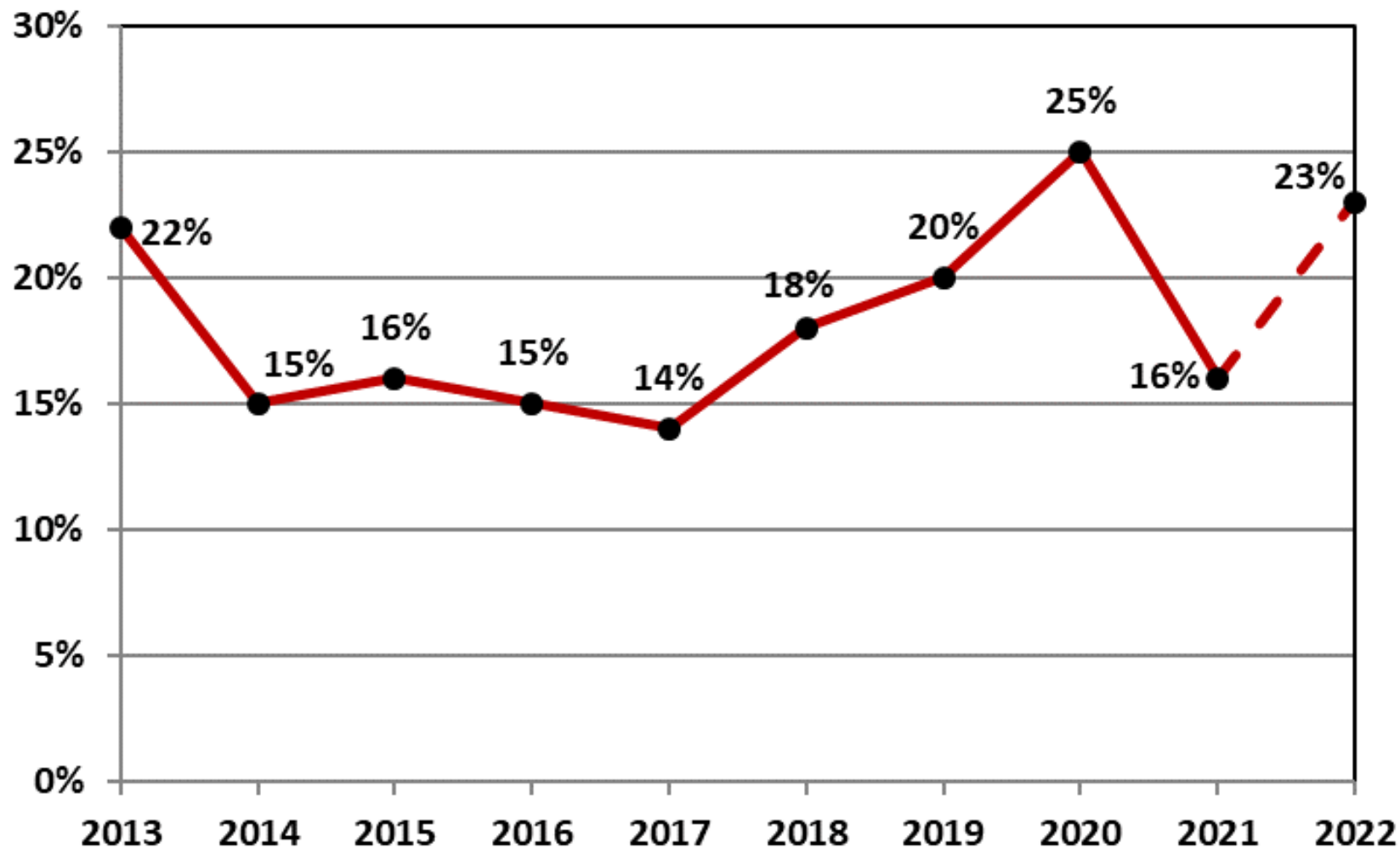
U.S. Registered Rotorcraft Cumulative Accident Count: FY19 - FY22



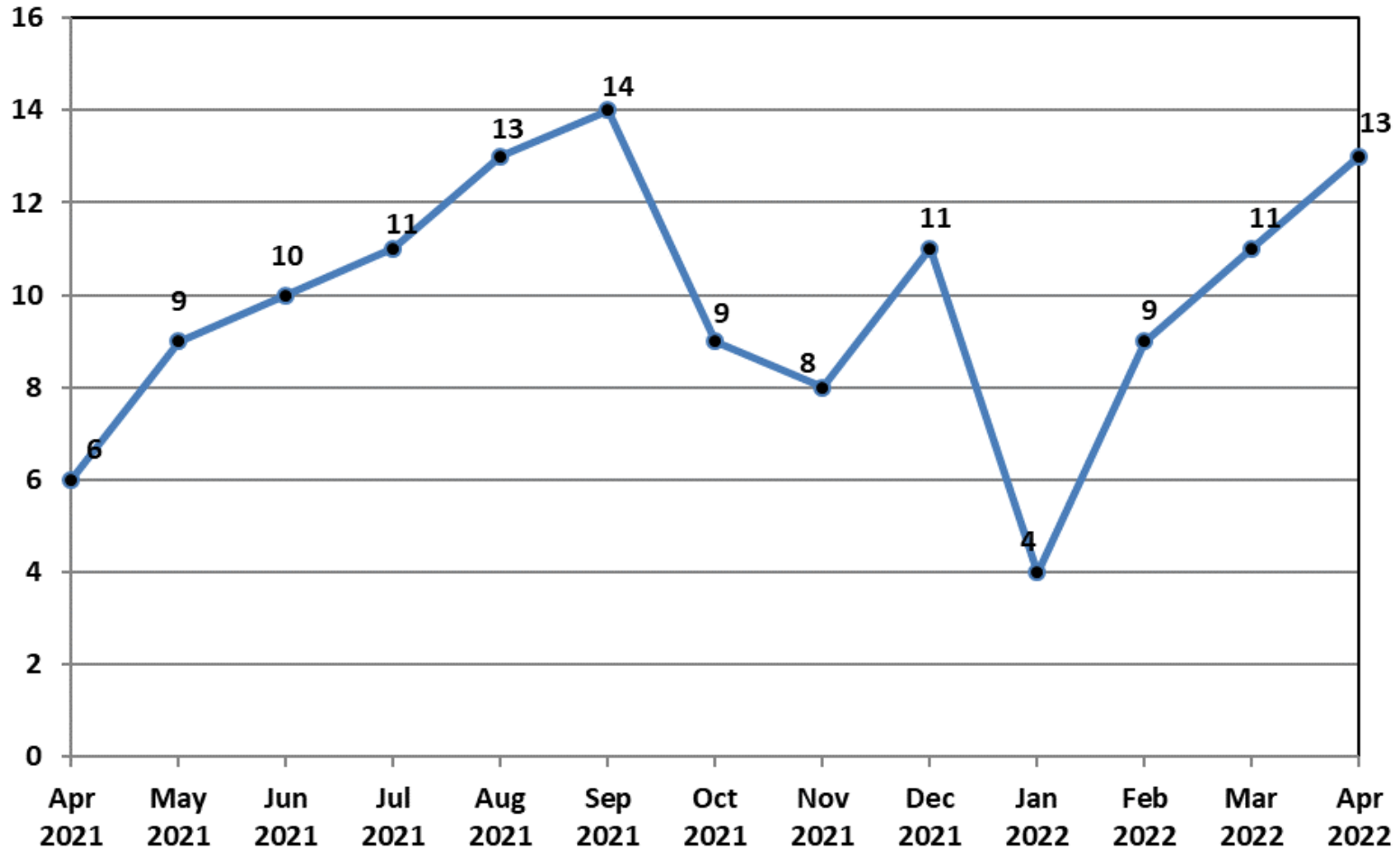
U.S. Registered Rotorcraft Average Fatal Accidents Per Month, FY83-FY22



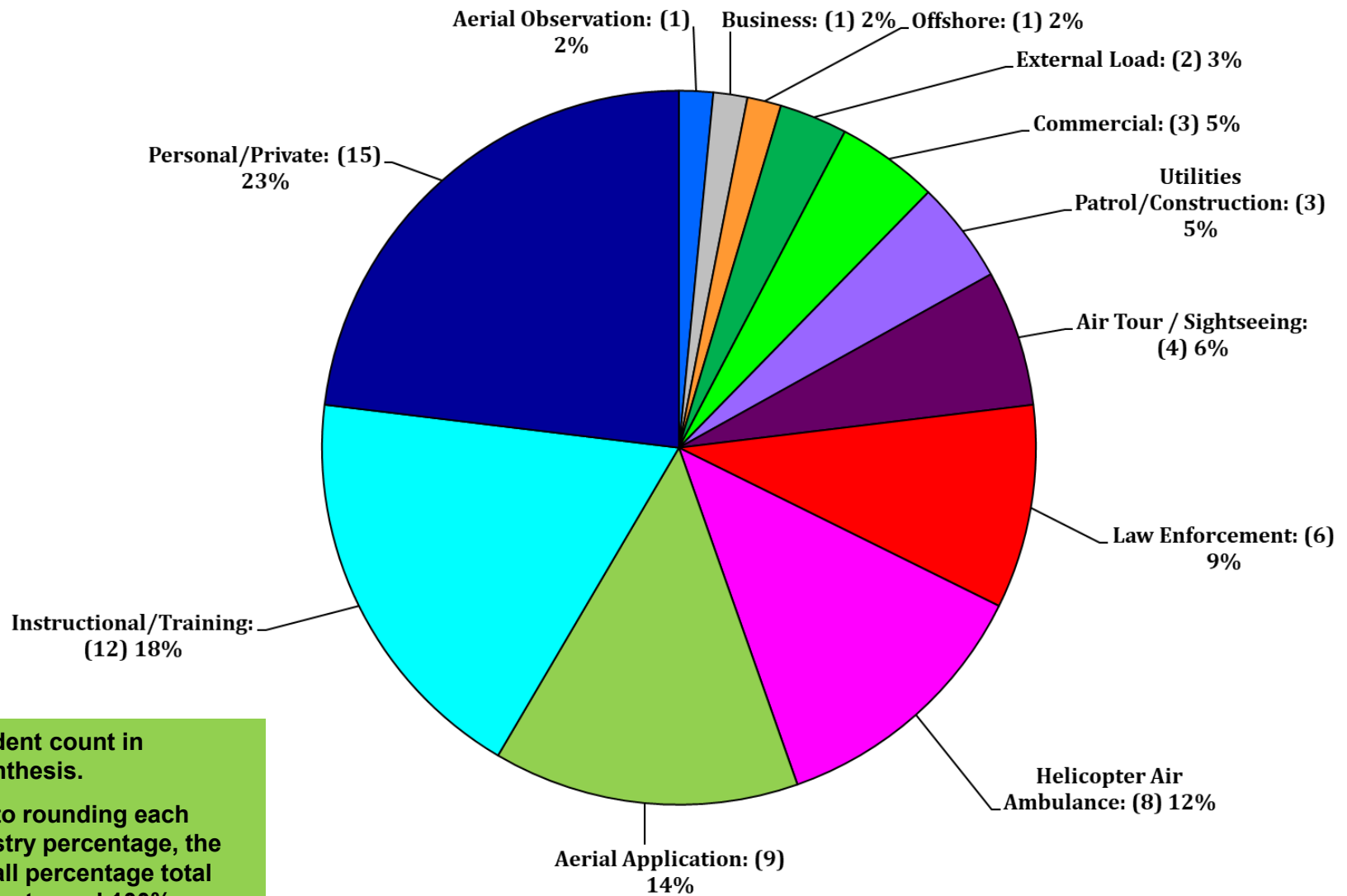
% of U.S. Rotorcraft Accidents with a Fatality (FY22, Oct - Apr)



U.S. Registered Rotorcraft 13 Month Rolling Accident Count



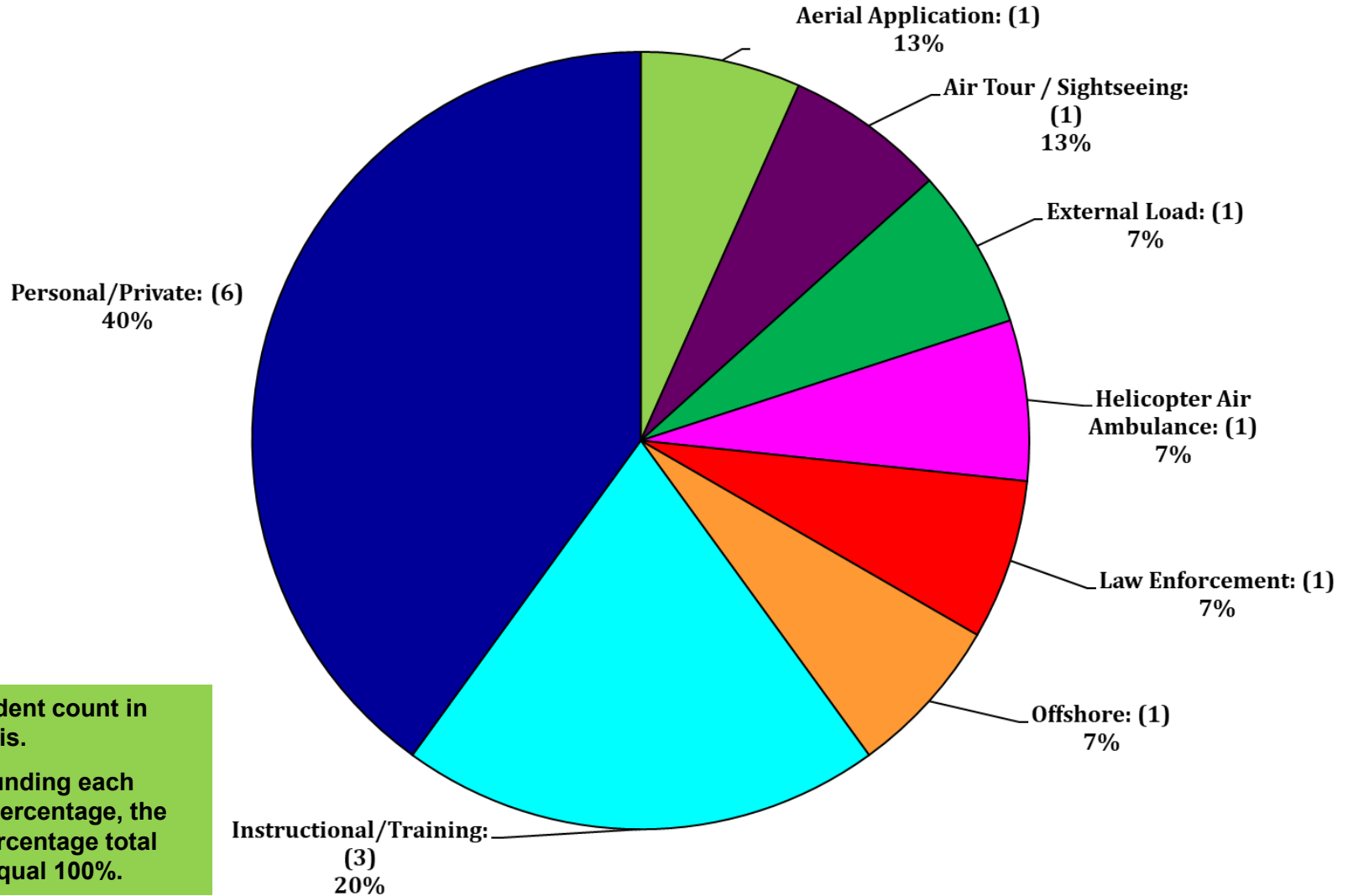
FY 22 – Total Accidents by Industry (Oct - Apr)



- Accident count in parenthesis.
- Due to rounding each Industry percentage, the overall percentage total may not equal 100%.



FY 22 – Total FATAL Accidents by Industry (Oct - Apr)



- Fatal accident count in parenthesis.
- Due to rounding each Industry percentage, the overall percentage total may not equal 100%.



FY 22 – U.S. Registered Fatal Rotorcraft Accidents

- 4-26-22 – Bell 429, N507TJ, Part 135, Elba, NY, 2 fatal
 - Helicopter Air Ambulance a/c on instructional/training flight
 - Crashed, unknown circumstances **NTSB: Pending**

- 4-15-22 – Robinson R22, N7516G, Part 91, Gila Bend, AZ, 1 fatal
 - Instructional/training flight; solo-cross country, Chandler (CHD) to Gila Bend (E63)
 - Rapid, near vertical descent approaching Rwy 22 at E63 **NTSB: ANC22FA030**

- 3-25-22 – Robinson R44, N514CD, Part 91, Rowlett, TX, 2 fatal
 - Instructional/training flight; a/c was at slow speed and altitude of 2,000 feet
 - Video of uncontrolled descent w/separated tail boom **NTSB: CEN22FA151**

- 3-18-22 – MDHI 369HM, N650AG, Part 91, Loxahatchee, FL, 2 fatal
 - Personal use flight; Flying at 25 to 75 feet AGL and collided with power line
 - Pilot and pilot rated pax did not have a helicopter rating **NTSB: ERA22FA160**

FY 22 – U.S. Registered Fatal Rotorcraft Accidents

- 2-22-22 – Sikorsky S-61N, N615CK, Part 133, Kekaha, Kauai, HI, 4 fatal
 - External load flight to retrieve inert training torpedoes from the Pacific Ocean
 - Was over land and near ordnance recovery area about 200 ft AGL; pitched nose down
 - Witnesses reported crashed in near vertical attitude **NTSB: ANC22FA018**

- 2-19-22 – MDHI 500N, N521HB, Public Aircraft, Newport Beach, CA, 1 fatal
 - Night law enforcement flight; orbiting to keep infrared camera on ground altercation
 - A/c yawed right; continued rotation until water impact **NTSB: WPR22FA101**

- 2-15-22 – Northwest Helicopters LLC UH-1H, N72297, Part 137, Coalinga, CA, 1 fatal
 - Night aerial application flight; ceased spraying when wind increased, departed area
 - A/c wreckage found 6 miles SE of last known position **NTSB: WPR22FA098**

- 1-14-22 – Bell 407, N167RL, Part 135, Houma, LA, 2 fatal
 - On-demand flight with 1 passenger
 - Witness observed a/c in nose down descent into trees **NTSB: CEN22FA100**

FY 22 – U.S. Registered Fatal Rotorcraft Accidents

- 12-30-21 – Robinson R44, N442VB, Part 91, Bronson, FL, 4 fatal
 - Personal use flight; night departure from private residence
 - Crashed 9 minutes after departure **NTSB: ERA22FA098**

- 12-30-21 – Bell 206B, N8AU, Part 91, Livingston, TX, 1 fatal, 1 serious, 2 minor
 - Sightseeing flight; hovering over trees near home of one of the pax
 - Began uncontrolled right rotation, struck tree, crashed **NTSB: CEN22FA086**

- 12-29-21 – Robinson R44, N544SC, Part 91, Cosby, TN, 1 fatal, 1 serious
 - Personal use flight; departed w/ leased a/c from service center; deteriorating weather
 - 12 min later, a/c observed flying out of fog/hitting trees **NTSB: ERA22FA096**

- 12-14-21 – Bell 407, N150AS, Part 91, LaPlace, LA, 1 fatal
 - Personal use flight; flying 75 to 175 ft AGL above I-10 enroute to New Orleans
 - Crashed after striking guy wire above bridge **NTSB: CEN22FA073**

FY 22 – U.S. Registered Fatal Rotorcraft Accidents

- 11-28-21 – Bell 206B, N59600, Part 91, Perry, OK, 1 fatal, 1 serious
 - Personal use flight; control loss while at 50 ft AGL/25 knots
 - Unable to recover control, crashed, post-crash fire **NTSB: CEN22FA053**
- 10-10-21 – Robinson R44, N637HP, Part 91, Cornwall, NY, 1 fatal
 - Personal use flight; 70 minutes into planned route from Glenn Falls to Ronkonkoma
 - Over Hudson River, made series of turns before crash **NTSB: ERA22FA010**
- 10-1-21 – Robinson R22, N412TL, Part 91, Chandler, AZ, 2 fatal
 - Instructional/training flight; traffic pattern at Chandler Municipal Airport
 - Midair collision w/Piper PA-28-181 airplane **NTSB: WPR22FA001**



FY 22 - US Rotorcraft Accidents By Model

MFR	Model	Registered U.S. Fleet Size	Percentage of Total U.S. Fleet	Number of FY22 U.S. Registered Accidents	Percentage of Total FY22 U.S. Registered Accidents
Airbus Helicopters	AS350 (H125)	927	7%	4	6%
	AS332	10	< 1%	1	2%
	BK117 (H145)	213	2%	1	2%
	EC120 (H120)	89	1%		
	EC130 (H130)	264	2%		
	EC135 (H135)	341	3%	1	2%

Only models that comprise at least 1% of U.S. registered rotorcraft are listed unless an accident has occurred.

*Fleet size based on analysis of rotorcraft on FAA registry as of March 2021



FY 22 - US Rotorcraft Accidents By Model

MFR	Model	Registered U.S. Fleet Size	Percentage of Total U.S. Fleet	Number of FY22 U.S. Registered Accidents	Percentage of Total FY22 U.S. Registered Accidents
Bell	205	52	< 1%	1	2%
	206Bs	912	7%	5	8%
	206Ls	557	4%	2	3%
	212	83	1%		
	407	791	6%	3	5%
	412	86	1%		
	429	120	1%	3	5%
	505	101	1%		

Only models that comprise at least 1% of U.S. registered rotorcraft are listed unless an accident has occurred.

*Fleet size based on analysis of rotorcraft on FAA registry as of March 2021

FY 22 - US Rotorcraft Accidents By Model

MFR	Model	Registered U.S. Fleet Size	Percentage of Total U.S. Fleet	Number of FY22 U.S. Registered Accidents	Percentage of Total FY22 U.S. Registered Accidents
Robinson	R-22	832	7%	9	14%
	R-44	1,686	13%	13	20%
	R-66	306	2%	1	2%

Only models that comprise at least 1% of U.S. registered rotorcraft are listed unless an accident has occurred.

*Fleet size based on analysis of rotorcraft on FAA registry as of March 2021



FY 22 - US Rotorcraft Accidents By Model

MFR	Model	Registered U.S. Fleet Size	Percentage of Total U.S. Fleet	Number of FY22 U.S. Registered Accidents	Percentage of Total FY22 U.S. Registered Accidents
Sikorsky	S-61	92	1%	1	2%
	S-76	228	2%	1	2%
	S-92	89	1%		

Only models that comprise at least 1% of U.S. registered rotorcraft are listed unless an accident has occurred.

*Fleet size based on analysis of rotorcraft on FAA registry as of March 2021



FY 22 - US Rotorcraft Accidents By Model

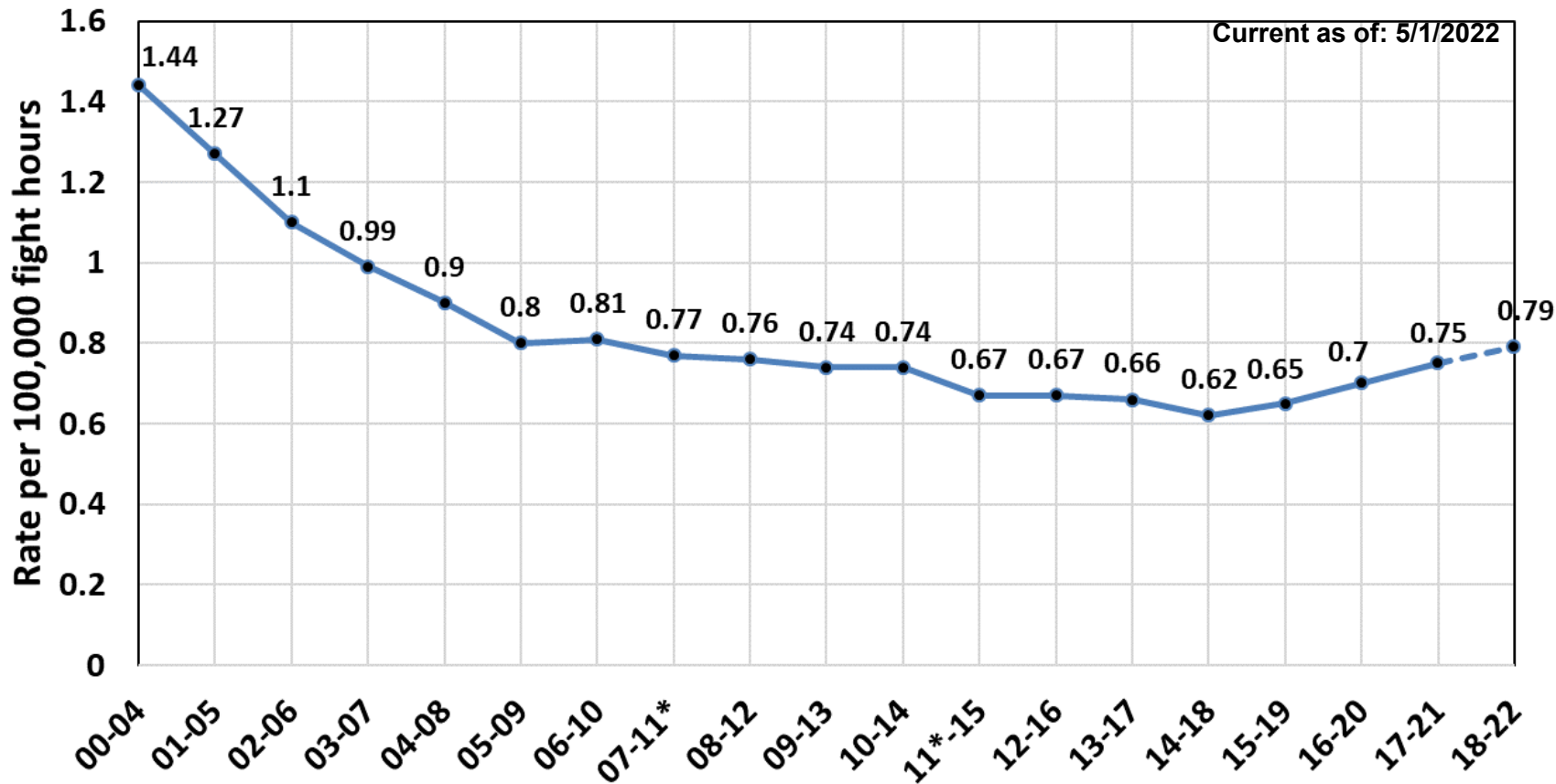
MFR	Model	Registered U.S. Fleet Size	Percentage of Total U.S. Fleet	Number of FY22 U.S. Registered Accidents	Percentage of Total FY22 U.S. Registered Accidents
Enstrom	280	122	1%		
	480	65	1%		
	F28	157	1%		
Hiller	UH-12/H-23	273	2%	1	2%
Leonardo (formerly Agusta Westland)	A109	166	1%		
	A119	136	1%		
	AW139	129	1%		
	AW169	6	< 1%	1	2%
MDHI	369	638	5%	5	8%
	500N	45	< 1%	1	2%
Restricted Category (all TCs)	HH-1/TH-1/UH-1	530	4%	2	3%
	OH-58	394	3%	4	6%
	H-60	229	2%		
Schweizer Rotorcraft Services Group	269/300/TH-55	487	4%	2	3%
Scott's Bell	47	523	4%	3	5%

Only models that comprise at least 1% of U.S. registered rotorcraft are listed unless an accident has occurred.

*Fleet size based on analysis of rotorcraft on FAA registry as of March 2021

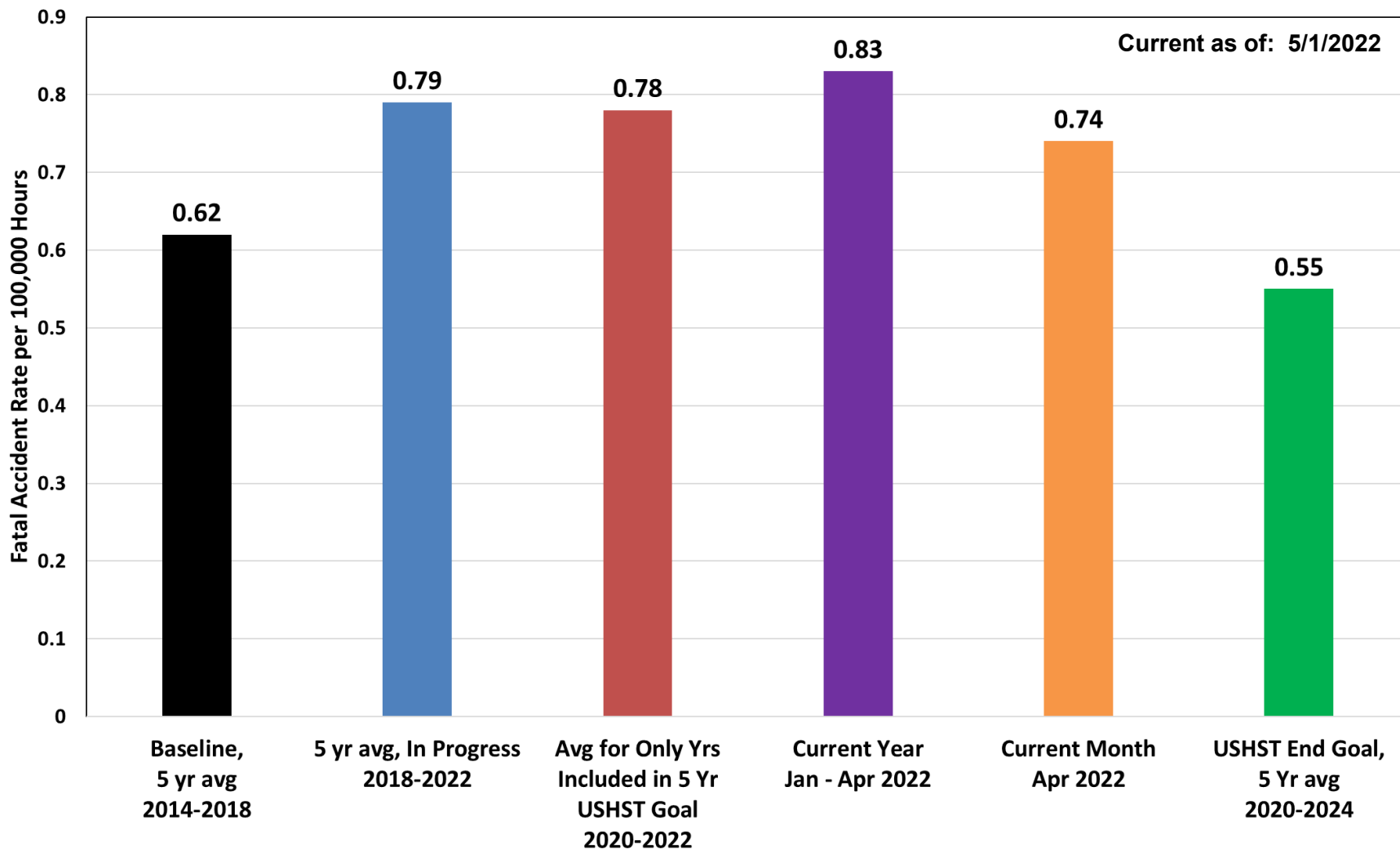


U.S. Helicopter Safety Team (USHST) 5 Year Average Fatal Accident Rate (CY)



Goal: By 2025, reduce the 5 year average fatal accident rate to 0.55 per 100K hours

U.S. Helicopter Safety Team (USHST) Key Fatal Accident Rate Markers (CY)





Rotorcraft Accident Dashboard

Data Refresh Schedule: Every Tuesday at 1:00 AM ET

Fiscal Year Briefing

Report Month
Apr 2022

Click on icon for help



Historical Briefing Tab

FY22: October-April

65 Total Accidents
 ▲30% vs. Same Period, Previous FY
 ▲23% vs. Same Period, 5 Year Average

15 Fatal Accidents
 ▲88% vs. Same Period, Previous FY
 ▲29% vs. Same Period, 5 Year Average

26 Fatalities
 ▲63% vs. Same Period, Previous FY
 ▲2% vs. Same Period, 5 Year Average

3.91 Accident Rate (per 100K hours)
 ▲26% vs. Same Period, Previous FY
 ▲18% vs. Same Period, 5 Year Average

0.90 Fatal Accident Rate (per 100K hours)
 ▲81% vs. Same Period, Previous FY
 ▲24% vs. Same Period, 5 Year Average

1.56 Fatality Rate (per 100K hours)
 ▲57% vs. Same Period, Previous FY
 ▼3% vs. Same Period, 5 Year Average

U.S. Registered Rotorcraft Event Counts

	Oct	Nov	Dec	Jan	Feb	Mar	Apr	May	Jun	Jul	Aug	Sep	Grand Total
Accidents	9	8	11	4	9	11	13						65
Fatal Accidents	2	1	4	1	3	2	2						15
Fatalities	3	1	7	2	6	4	3						26

Same time period, previous FY:
 Accidents: 50; Fatal Accidents: 8; Fatalities: 16.



Estimated Rates by Month (per 100,000 flight hours)

	Oct	Nov	Dec	Jan	Feb	Mar	Apr	May	Jun	Jul	Aug	Sep	Grand Total
Accident Rate	3.38	3.52	5.53	1.98	3.90	4.13	4.82						3.91
Fatal Accident Rate	0.75	0.44	2.01	0.49	1.30	0.75	0.74						0.90
Fatality Rate	1.13	0.44	3.52	0.99	2.60	1.50	1.11						1.56

Same time period, previous FY:
 Accident Rate: 3.11; Fatal Accident Rate: 0.50; Fatality Rate: 1.00.



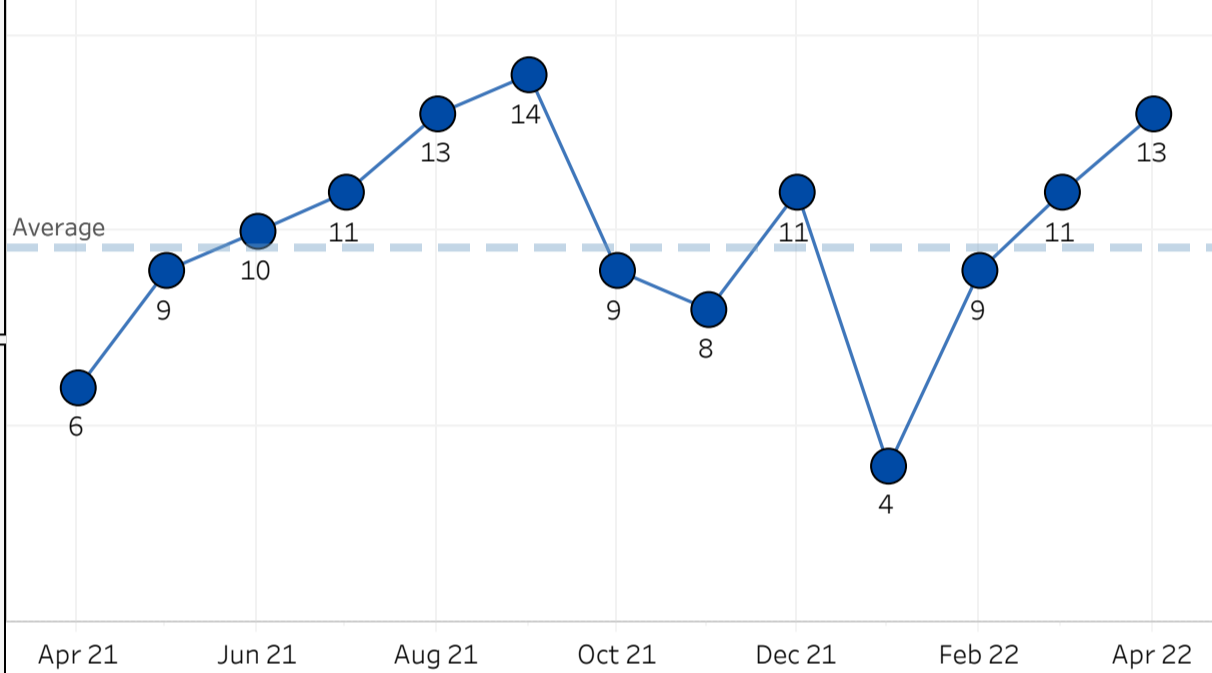
U.S. Registered Rotorcraft 13 Month Accident Count

vs. Same Month Previous Year:

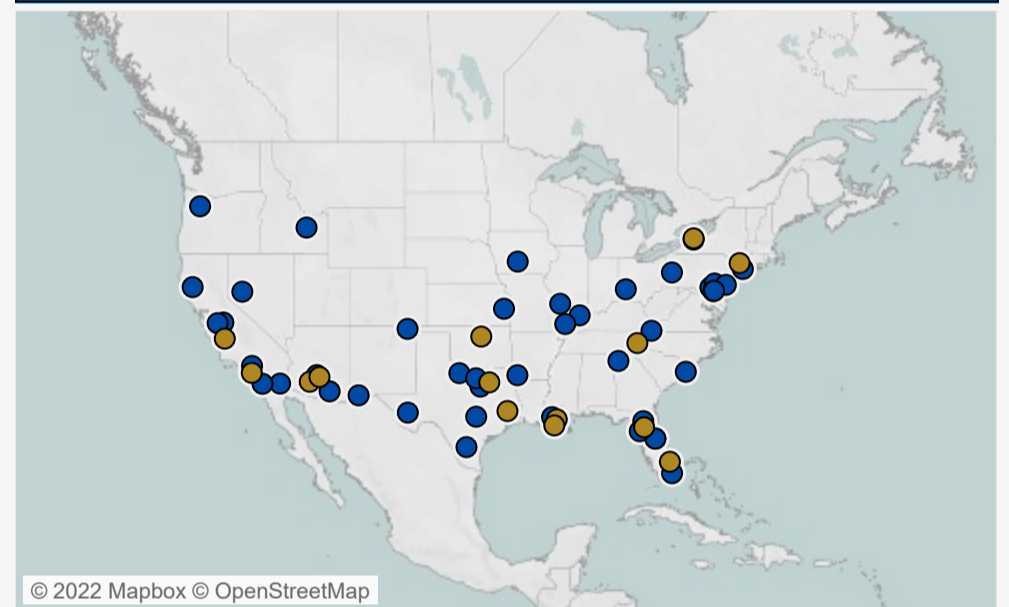
▲117%

vs. 12 Month Average:

▲36%



Accident Details



Map

Summary

Accidents by Industry Sector

All Accidents

65 Total Accidents

- Personal/Private: 23% {15}
- Aerial Application: 14% {9}
- Helicopter Air Ambulance: 12% {8}
- Law Enforcement: 9% {6}
- Air Tour / Sightseeing: 6% {4}
- Instructional/Training: 18% {12}

Aerial Observation	2% {1}
Business	2% {1}
Offshore	2% {1}
External Load	3% {2}
Commercial	5% {3}
Utilities Patrol / Construction	5% {3}
Air Tour / Sightseeing	6% {4}
Law Enforcement	9% {6}
Helicopter Air Ambulance	12% {8}
Aerial Application	14% {9}
Instructional/Training	18% {12}
Personal/Private	23% {15}

FY to Date

This Month

Fatal Accidents

15 Fatal Accidents

- Personal/Private: 40% {6}
- Instructional/Training: 20% {3}
- Offshore: 7% {1}
- Law Enforcement: 7% {1}
- External Load: 7% {1}
- Helicopter Air Ambulance: 7% {1}
- Air Tour / Sightseeing: 7% {1}

Aerial Application	7% {1}
Air Tour / Sightseeing	7% {1}
Helicopter Air Ambulance	7% {1}
External Load	7% {1}
Law Enforcement	7% {1}
Offshore	7% {1}
Instructional/Training	20% {3}
Personal/Private	40% {6}

FY to Date

This Month



Rotorcraft Accident Dashboard

Data Refresh Schedule: Every Tuesday at 1:00 AM ET

Historical Briefing

Report Month
Apr 2022

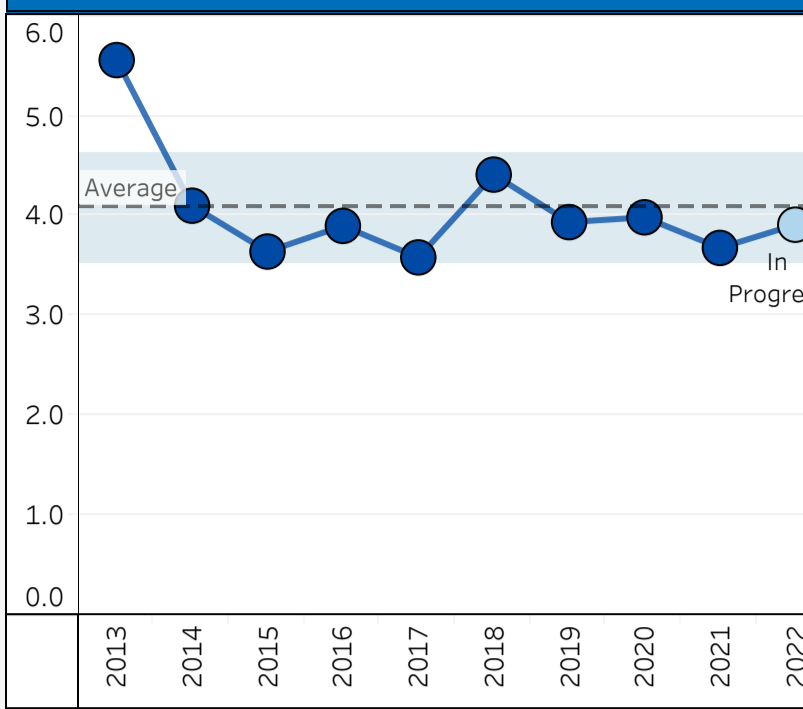
Click on icon for help



Fiscal Year Briefing Tab

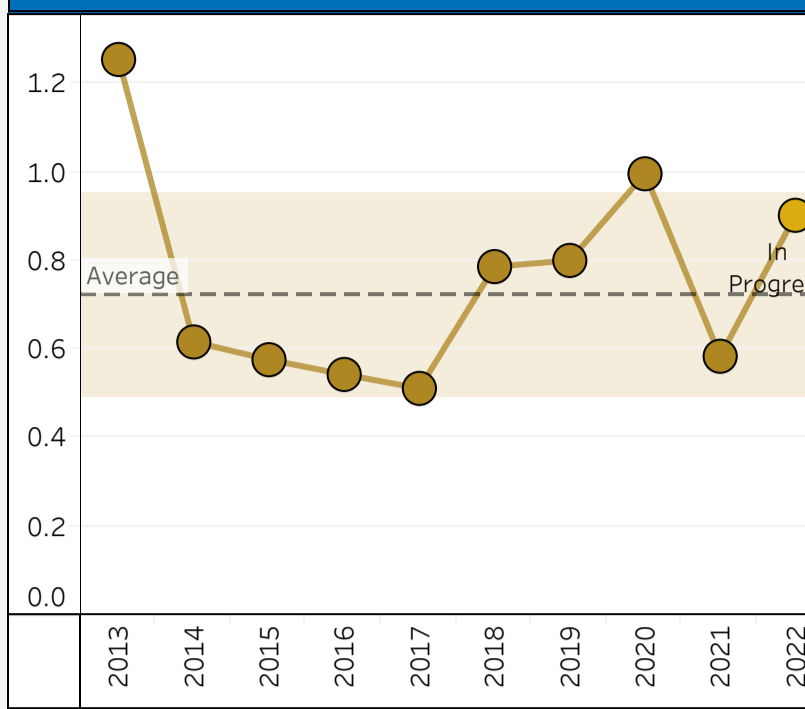
Estimated Rotorcraft Accident Rate by FY

10 Year Lookback - Rates per 100,000 Hours



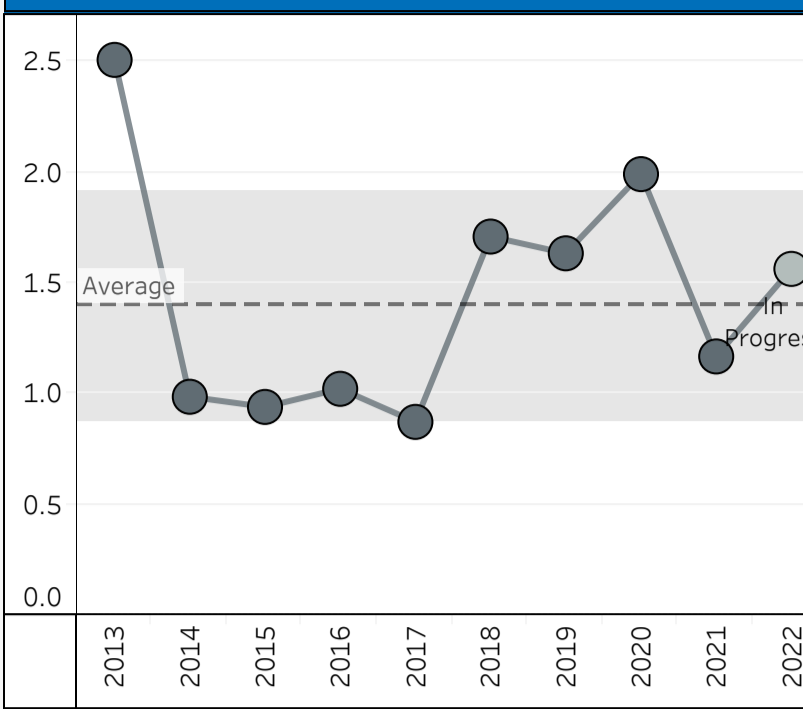
Estimated Rotorcraft Fatal Rate by FY

10 Year Lookback - Rates per 100,000 Hours



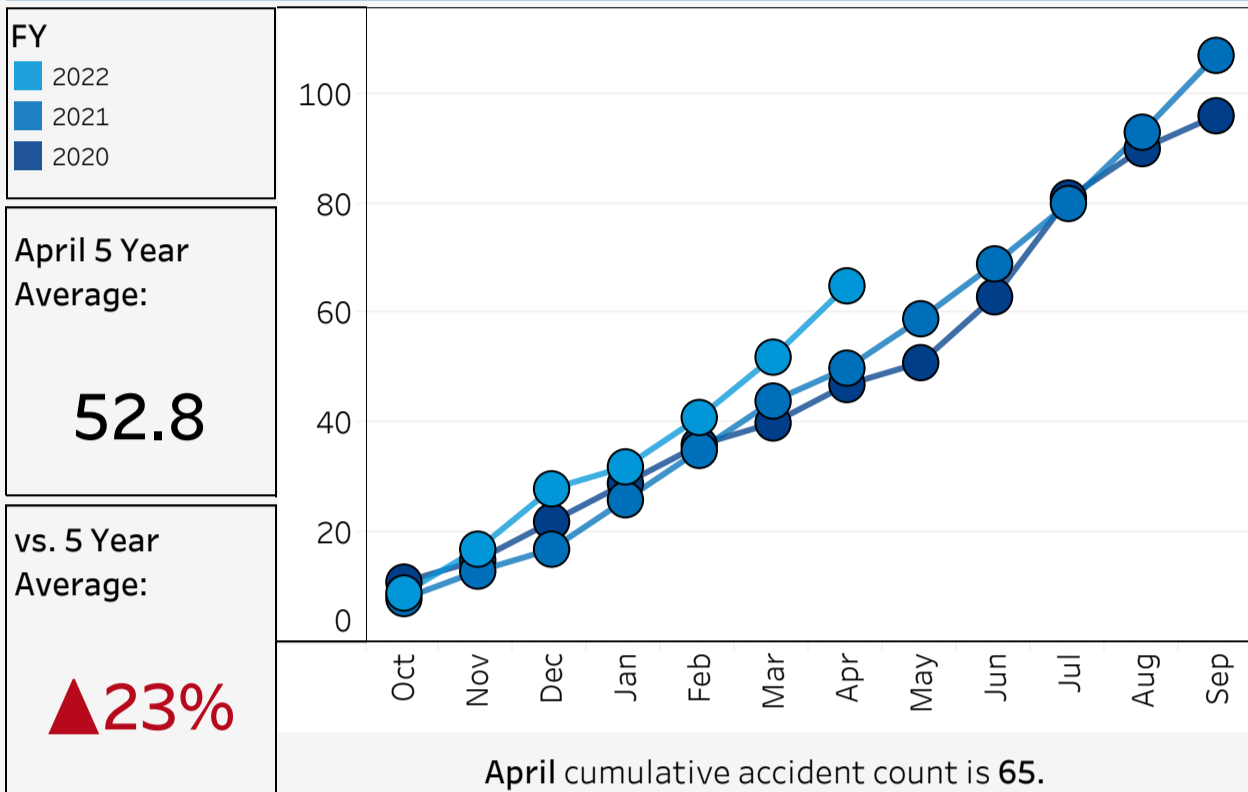
Estimated Rotorcraft Fatality Rate by FY

10 Year Lookback - Rates per 100,000 Hours

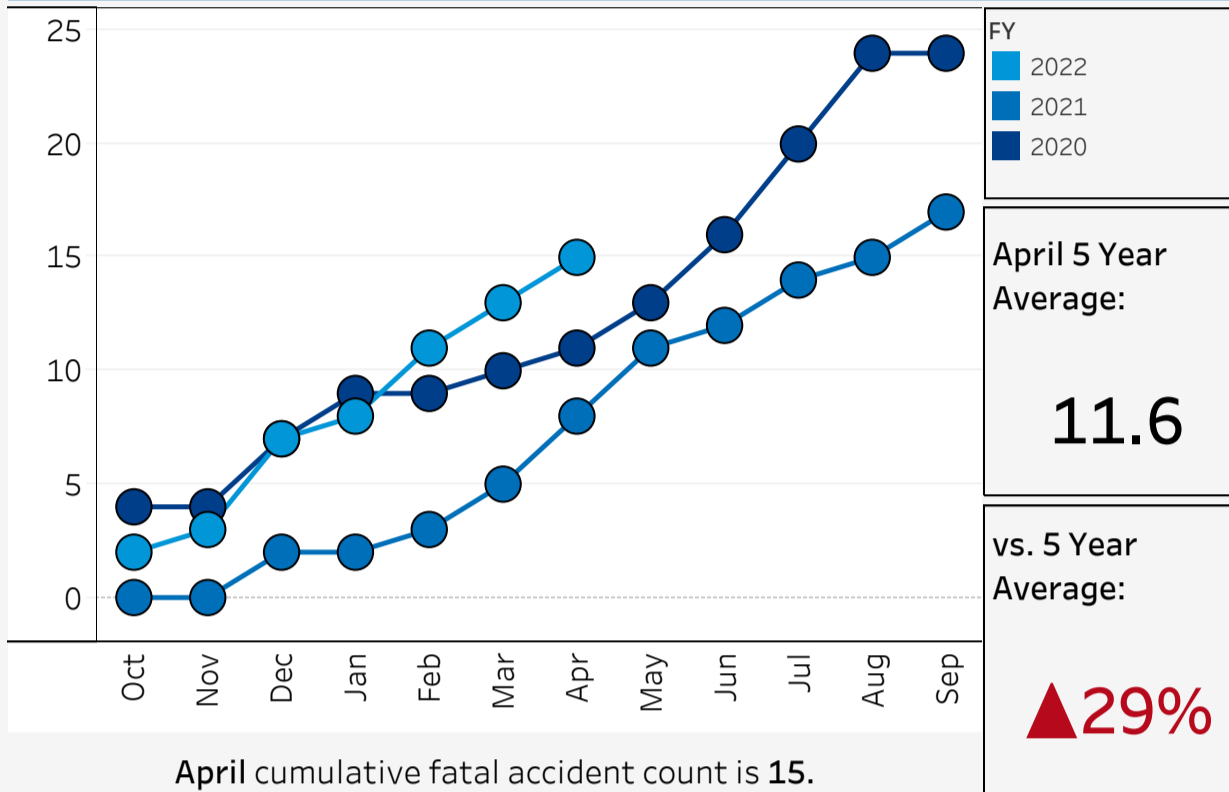


	2013	2014	2015	2016	2017	2018	2019	2020	2021	2022
Accident Rate	5.56	4.10	3.64	3.90	3.58	4.41	3.94	3.99	3.68	3.91
Fatal Accident Rate	1.25	0.62	0.58	0.54	0.51	0.79	0.80	1.00	0.58	0.90
Fatality Rate	2.51	0.99	0.94	1.02	0.87	1.71	1.64	1.99	1.17	1.56

Cumulative Accident Count

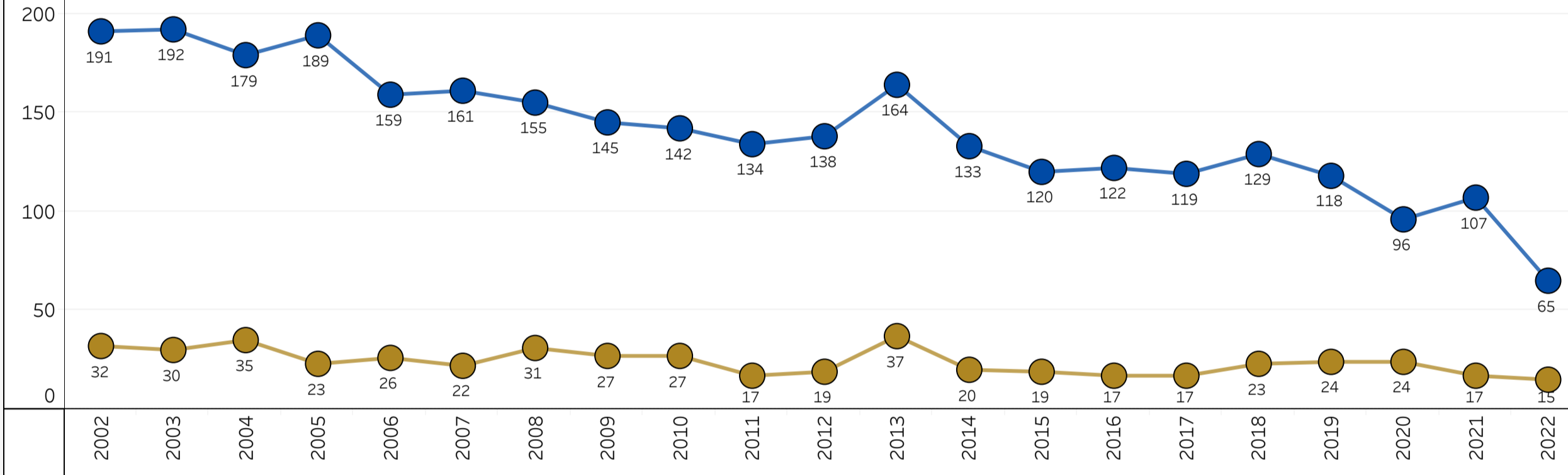


Cumulative Fatal Accident Count

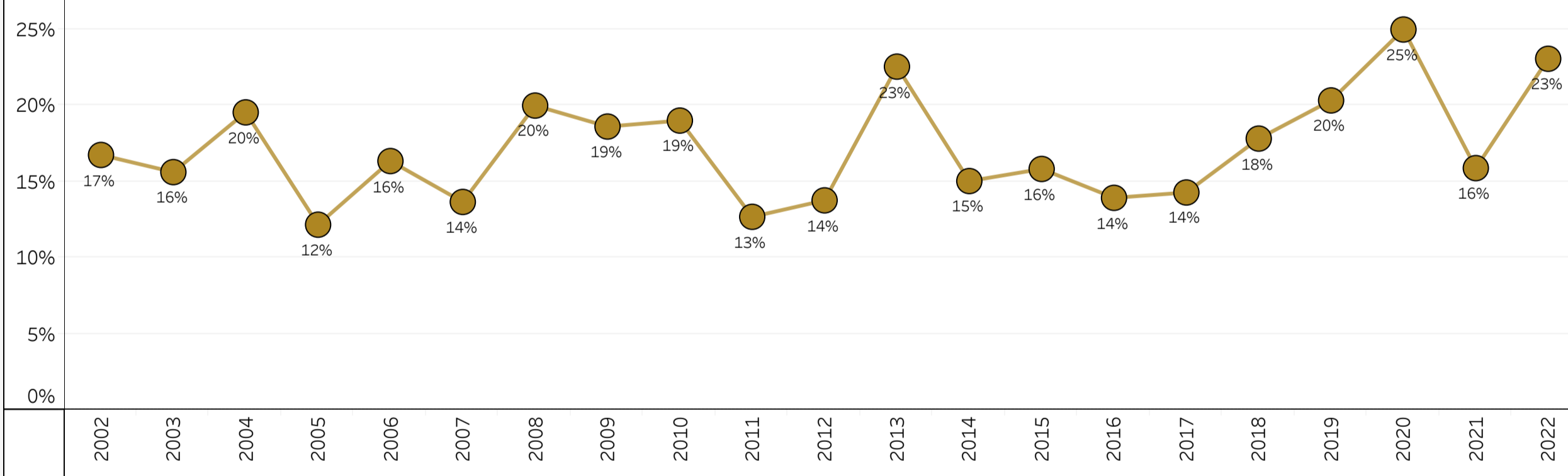


Select a FY Range to view for charts below Past N Fiscal Years: 20

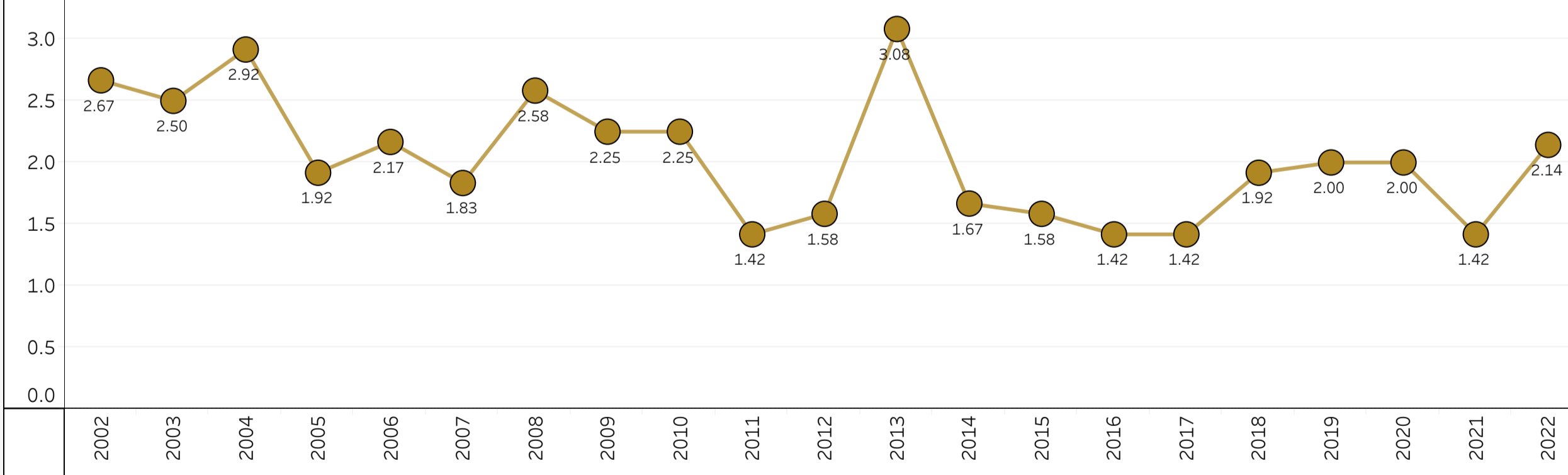
US Registered Rotorcraft Accidents by FY



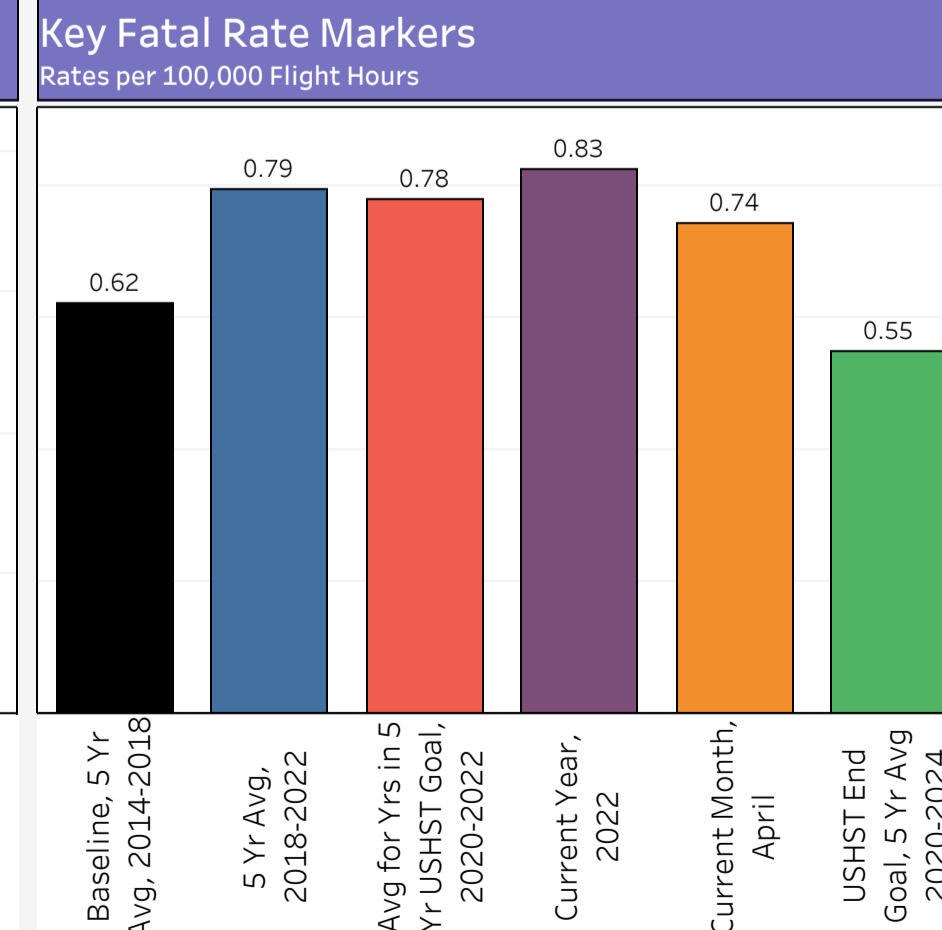
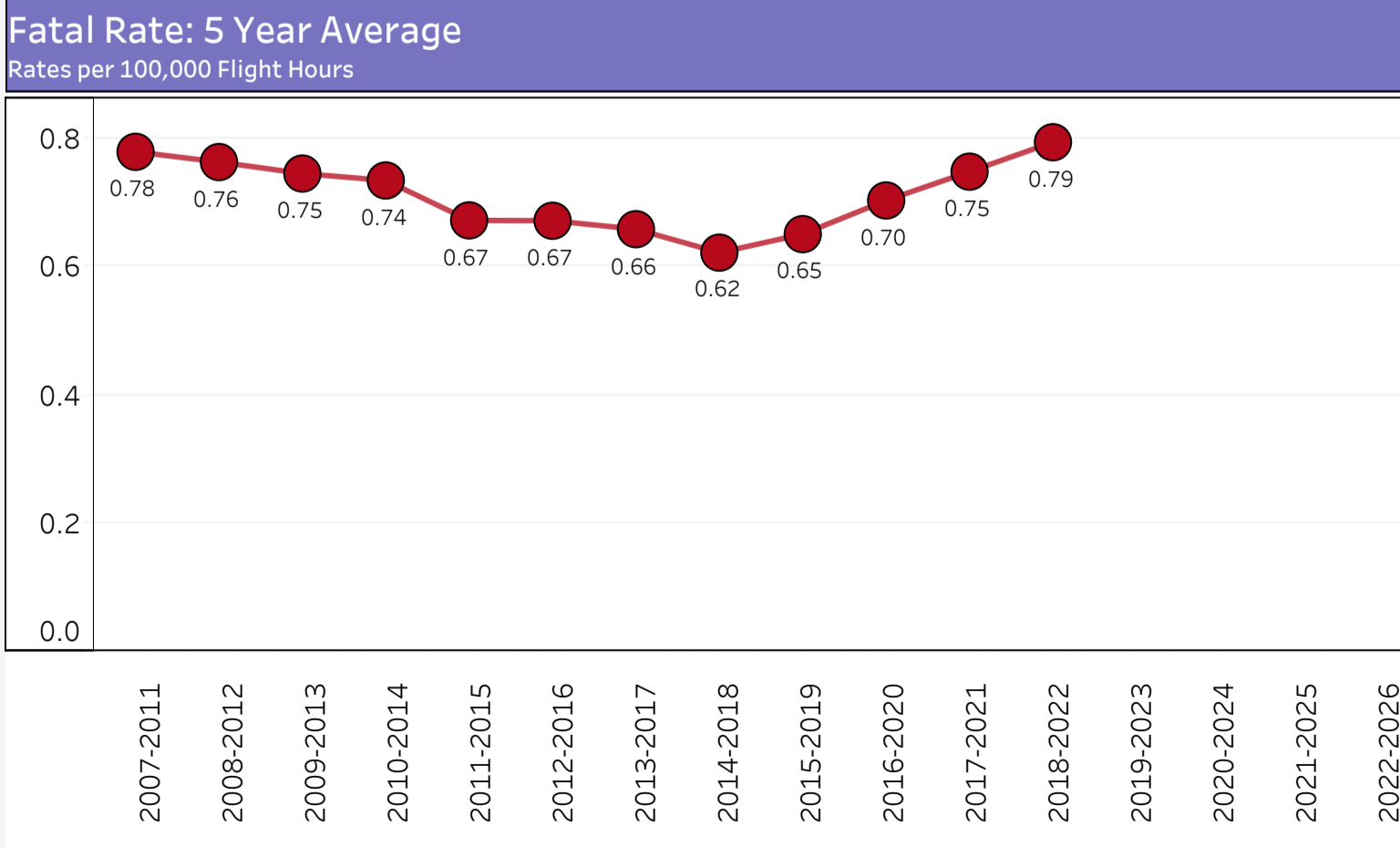
Percent of Rotorcraft Accidents with Fatality by FY



Average Fatal Accidents/Month by FY



U.S. Helicopter Safety Team (USHST) Calendar Year Metrics



USHST Current Goal: Reduce 5 Year Average Fatal Accident Rate to .55 per 100K Flight Hours.