



Federal Aviation
Administration

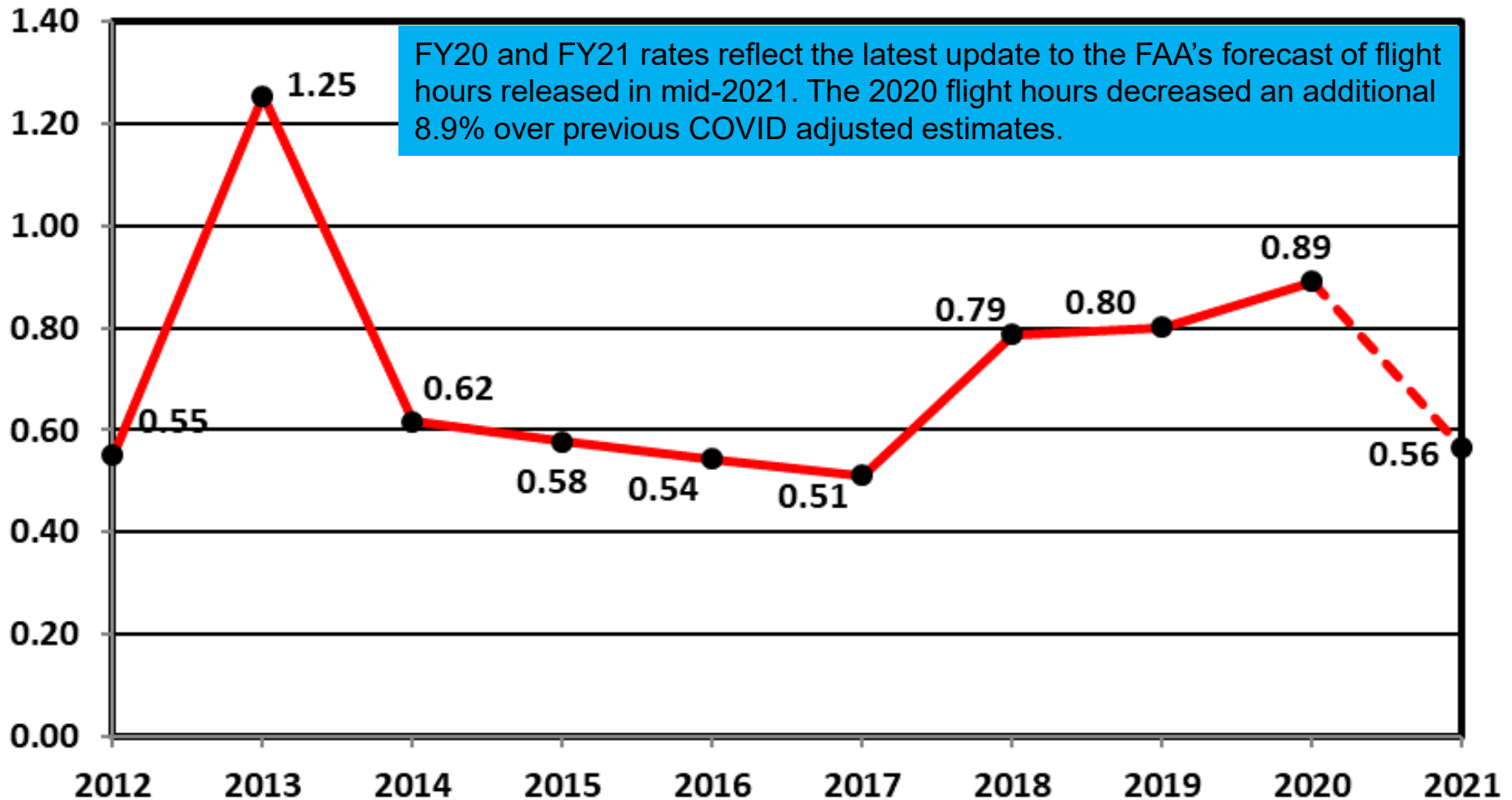
Fleet Safety Section, AIR-723

Rotorcraft Monthly Accident Briefing

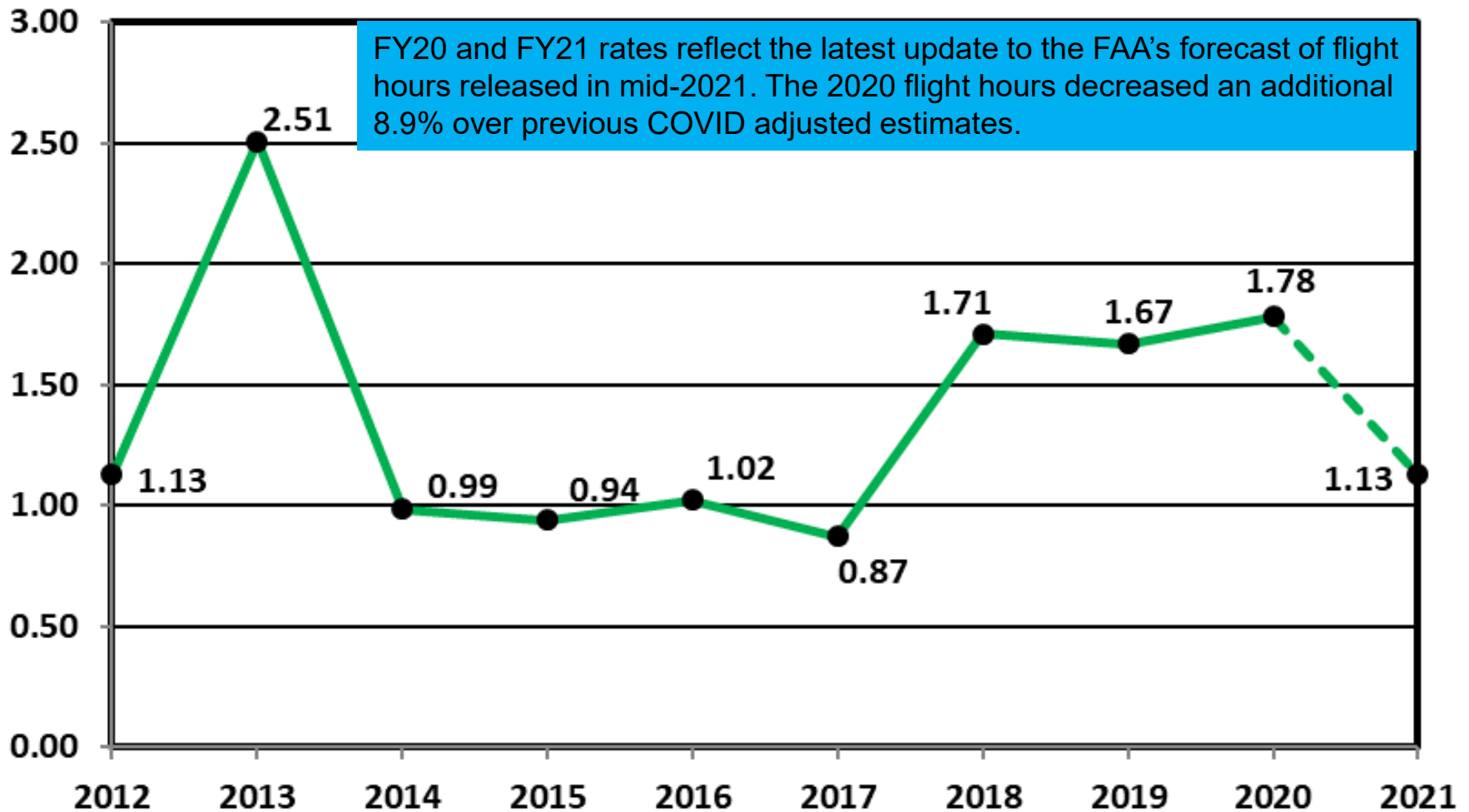
August 2021



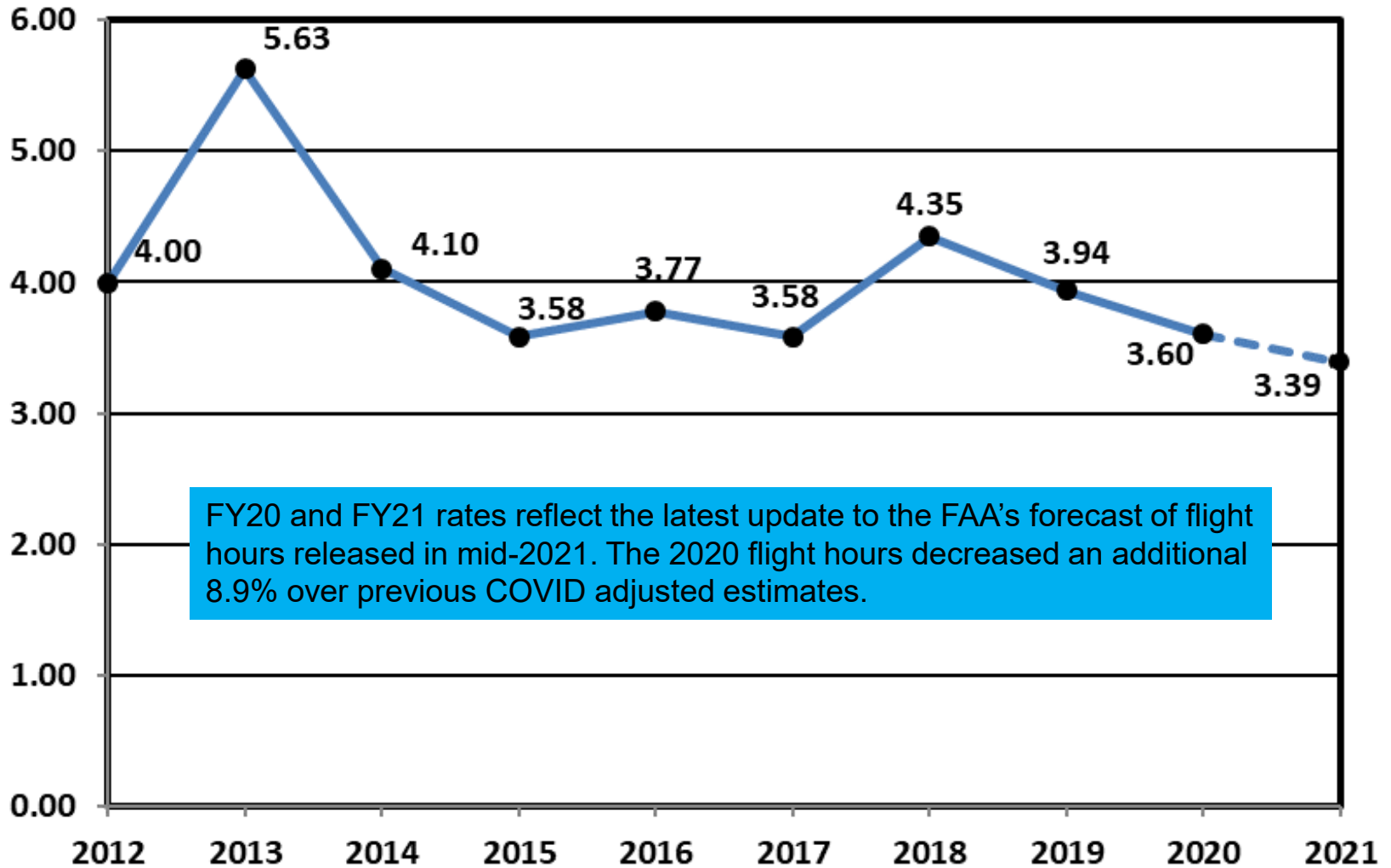
Estimated U.S. Rotorcraft FATAL Accident Rate by FY 10 Year Lookback – Rates per 100,000 Hours



Estimated U.S. Rotorcraft Fatality Rate by FY 10 Year Lookback – Rates per 100,000 Hours



Estimated U.S. Rotorcraft Accident Rate by FY 10 Year Lookback – Rates per 100,000 Hours



FY 21 – U.S. Registered Rotorcraft Event Counts

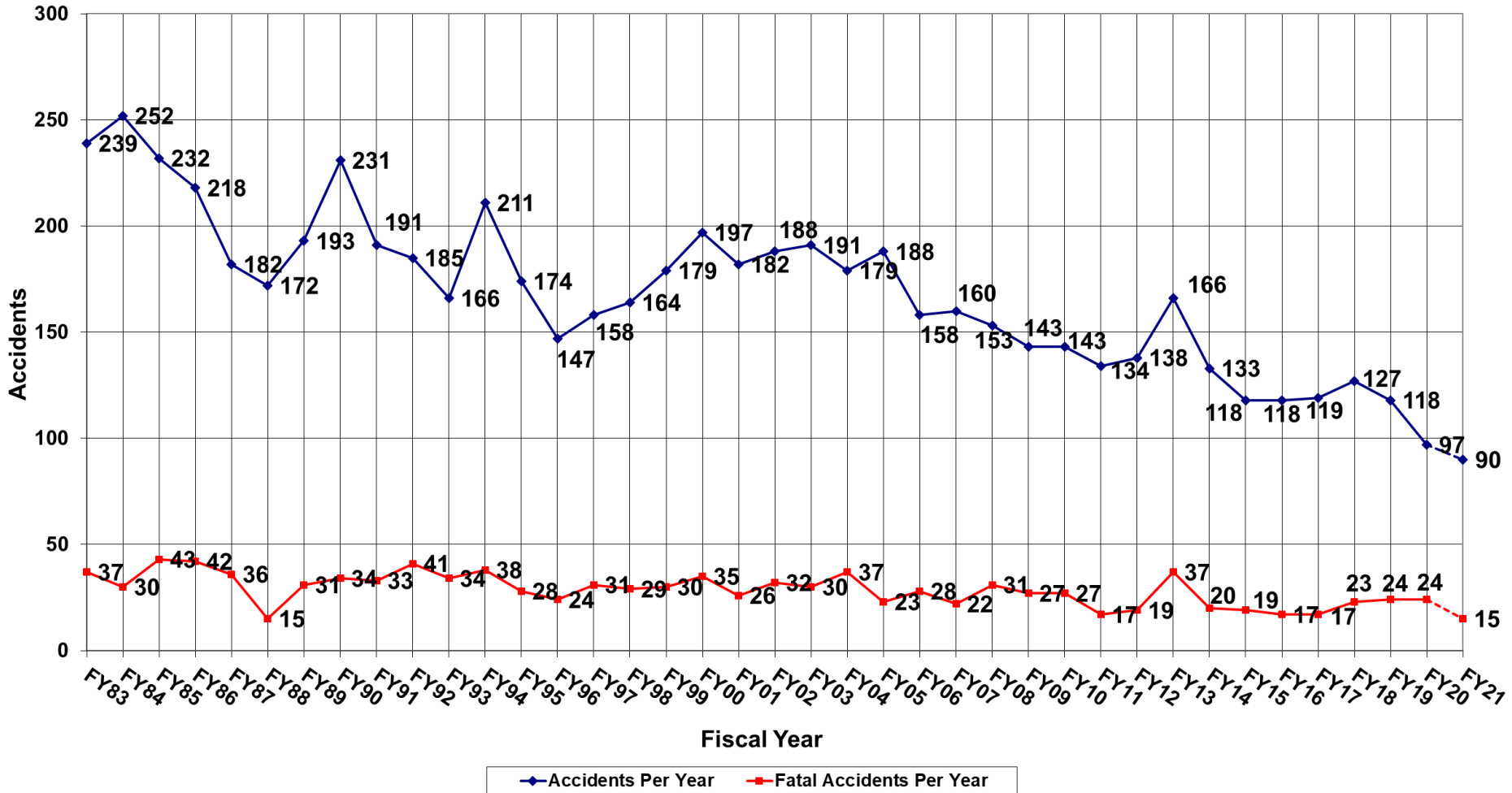
	Oct	Nov	Dec	Jan	Feb	Mar	Apr	May	Jun	Jul	Aug	Sep	YTD
Accidents:	8	5	4	9	9	10	6	9	10	9	11		90
Fatal Acc:	0	0	2	0	1	2	3	3	1	2	1		15
Fatalities:	0	0	3	0	4	6	3	6	1	3	4		30
Same time period, previous FY: 90 Accidents, 24 Fatal Accidents, 48 Fatalities													

Data Source: FAA, NTSB Databases. Includes only events classified as accidents and does not include incidents. The accident numbers for each month of the Fiscal Year may vary from the previous monthly briefing based on analysis between FAA and NTSB databases for the specified month. The NTSB database may include accidents that were not reported to this office resulting in slightly different numbers.

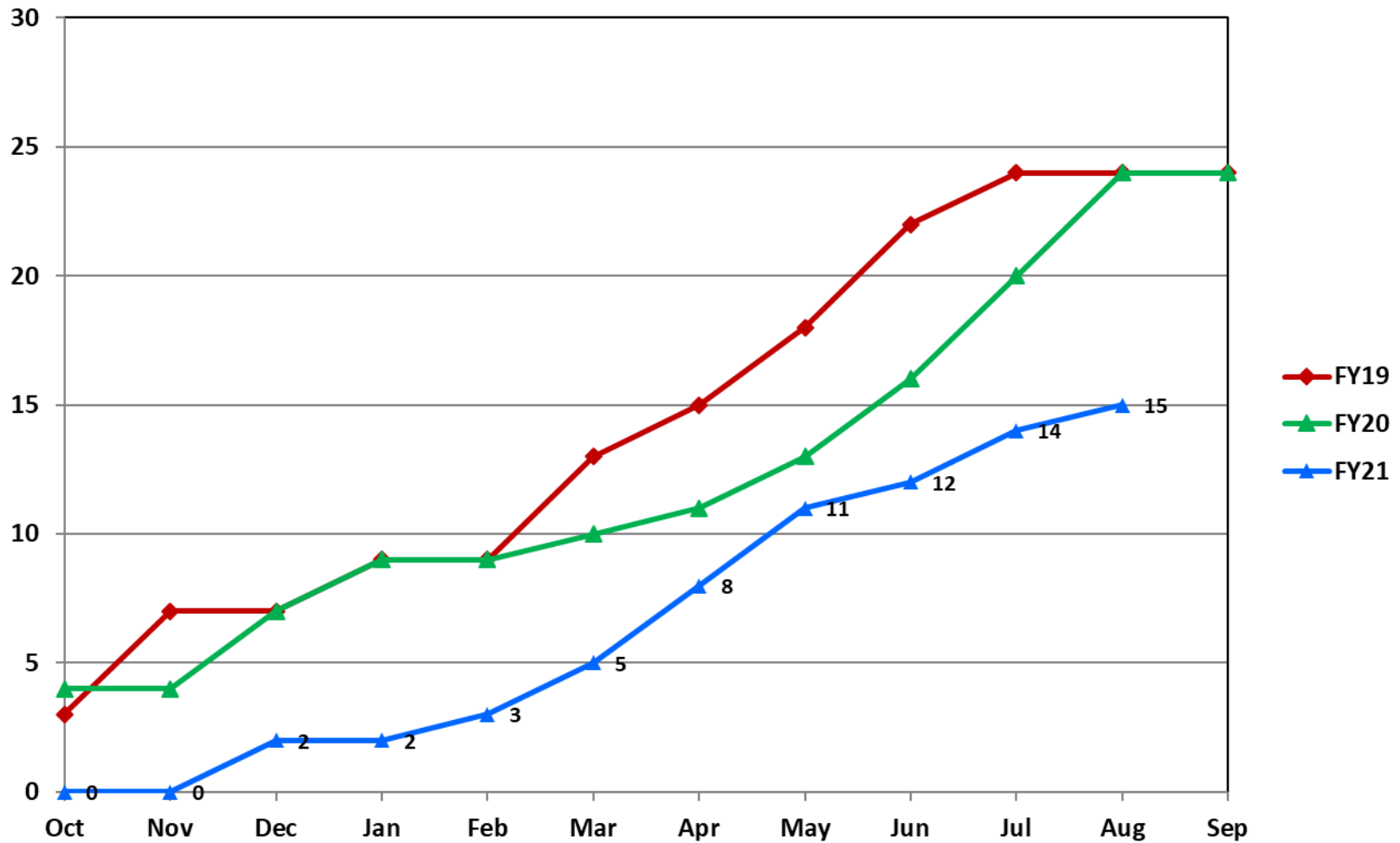
Estimated Rates by Month (per 100,000 flight hours)

	Oct	Nov	Dec	Jan	Feb	Mar	Apr	May	Jun	Jul	Aug	Sep	YTD
Accidents:	3.11	2.27	2.08	4.6	4.03	3.88	2.3	3.50	3.69	3.3	4.41		3.39
Fatal Acc:	0	0	1.04	0	0.45	0.78	1.15	1.17	0.37	0.73	.4		0.56
Fatalities:	0	0	1.56	0	1.79	2.33	1.15	2.33	0.37	1.1	1.6		1.13

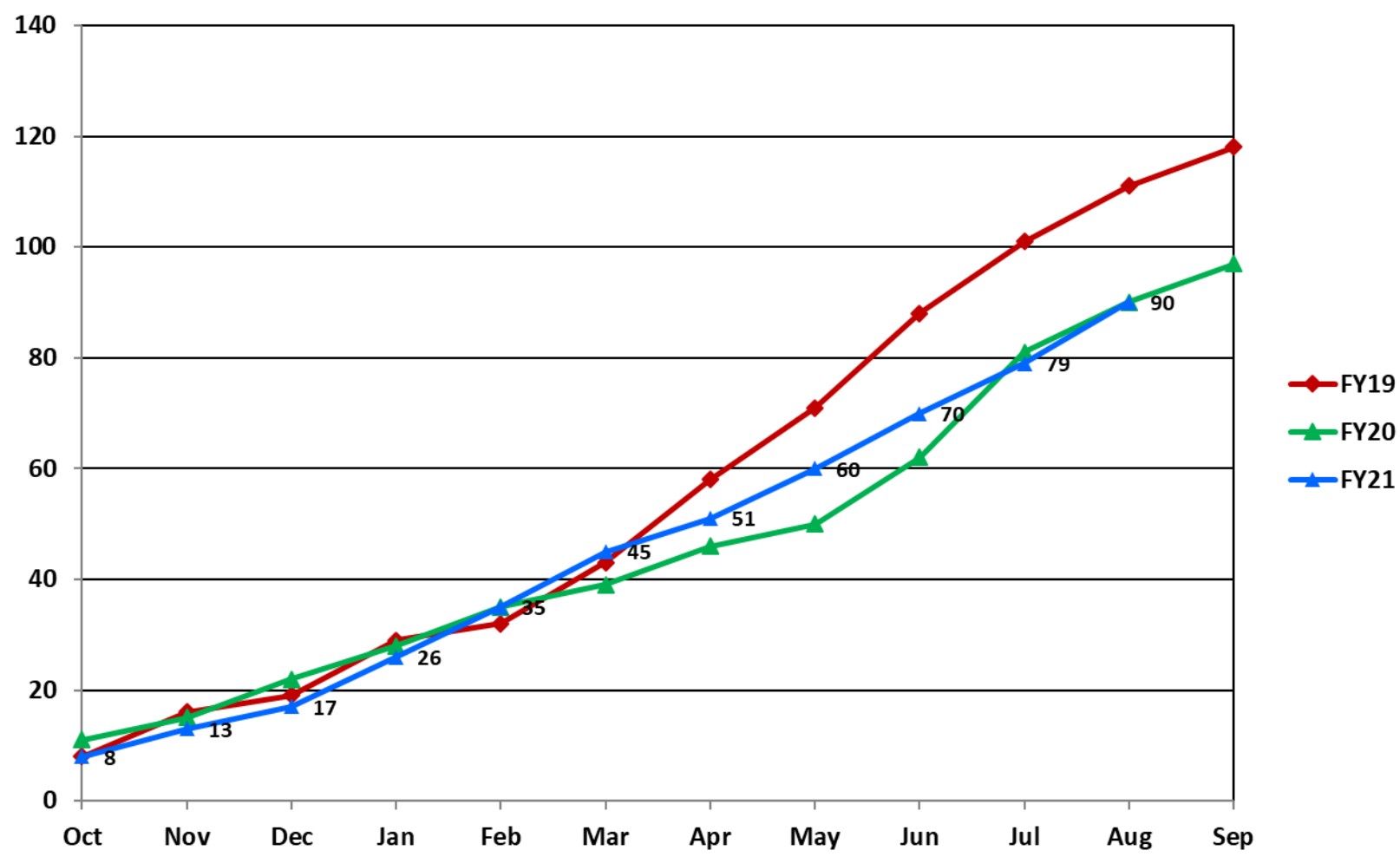
U.S. Registered Rotorcraft Accidents FY83 - FY21



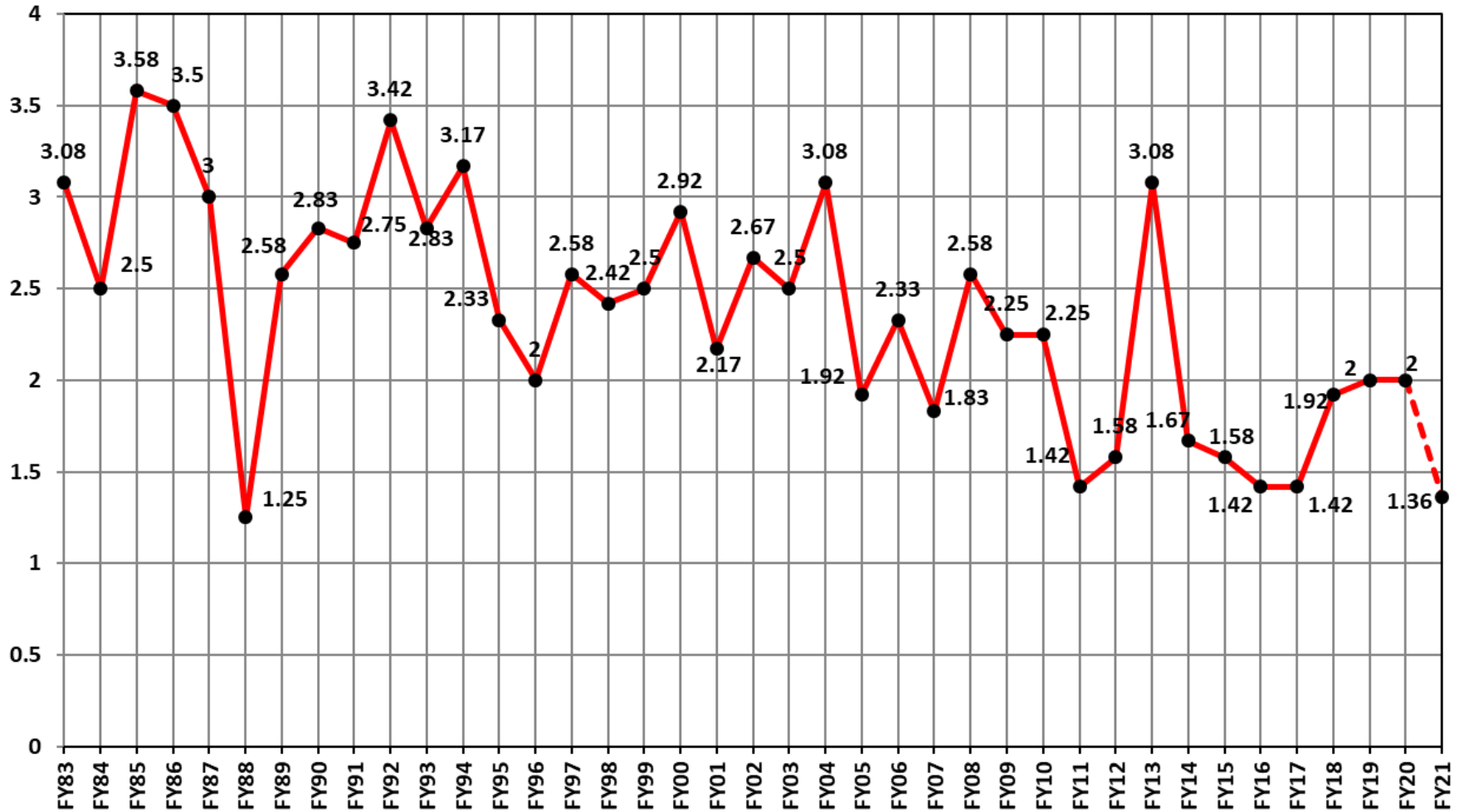
U.S. Registered Rotorcraft Cumulative Fatal Accident Count: FY19 - FY21



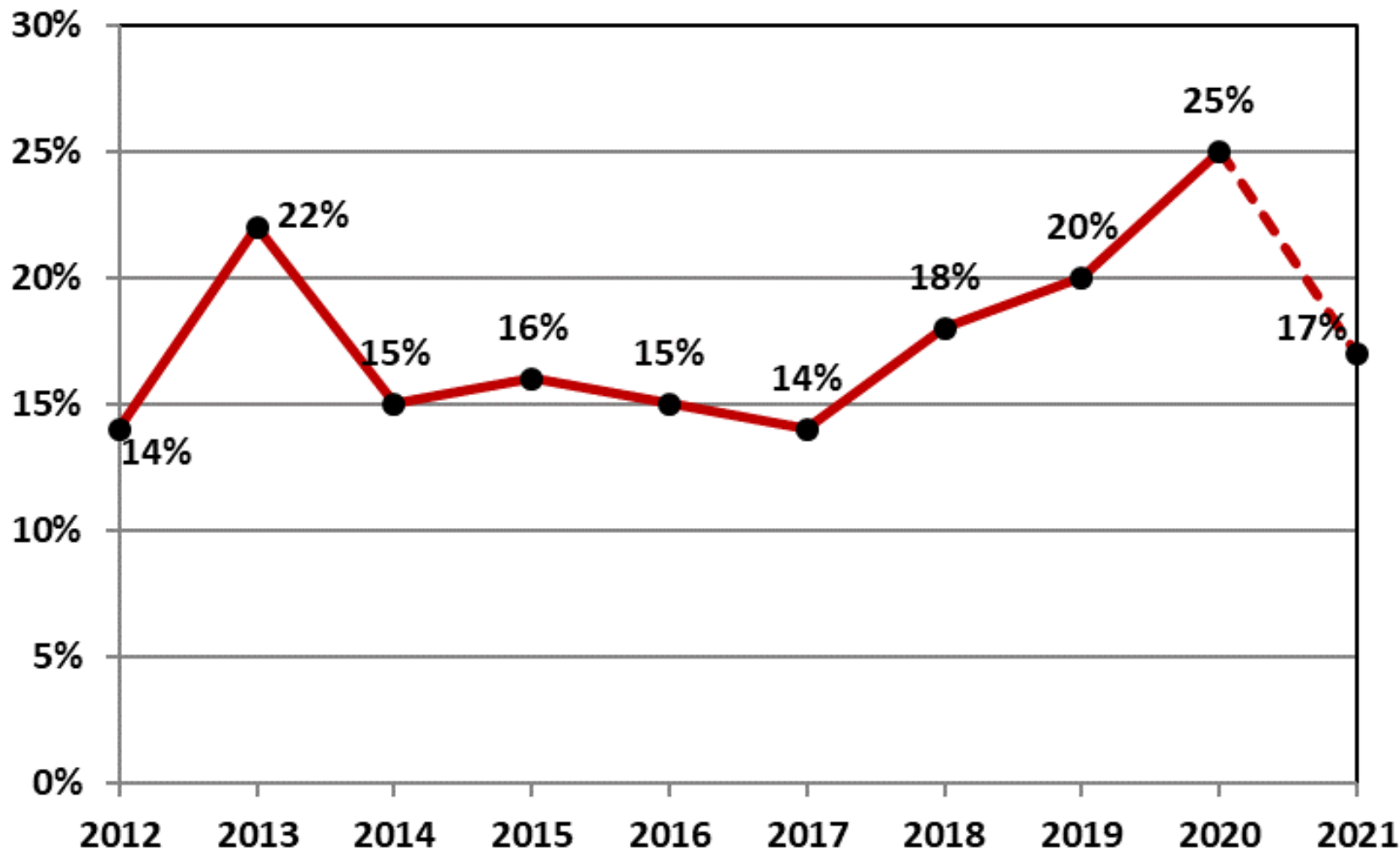
U.S. Registered Rotorcraft Cumulative Accident Count: FY19 - FY21



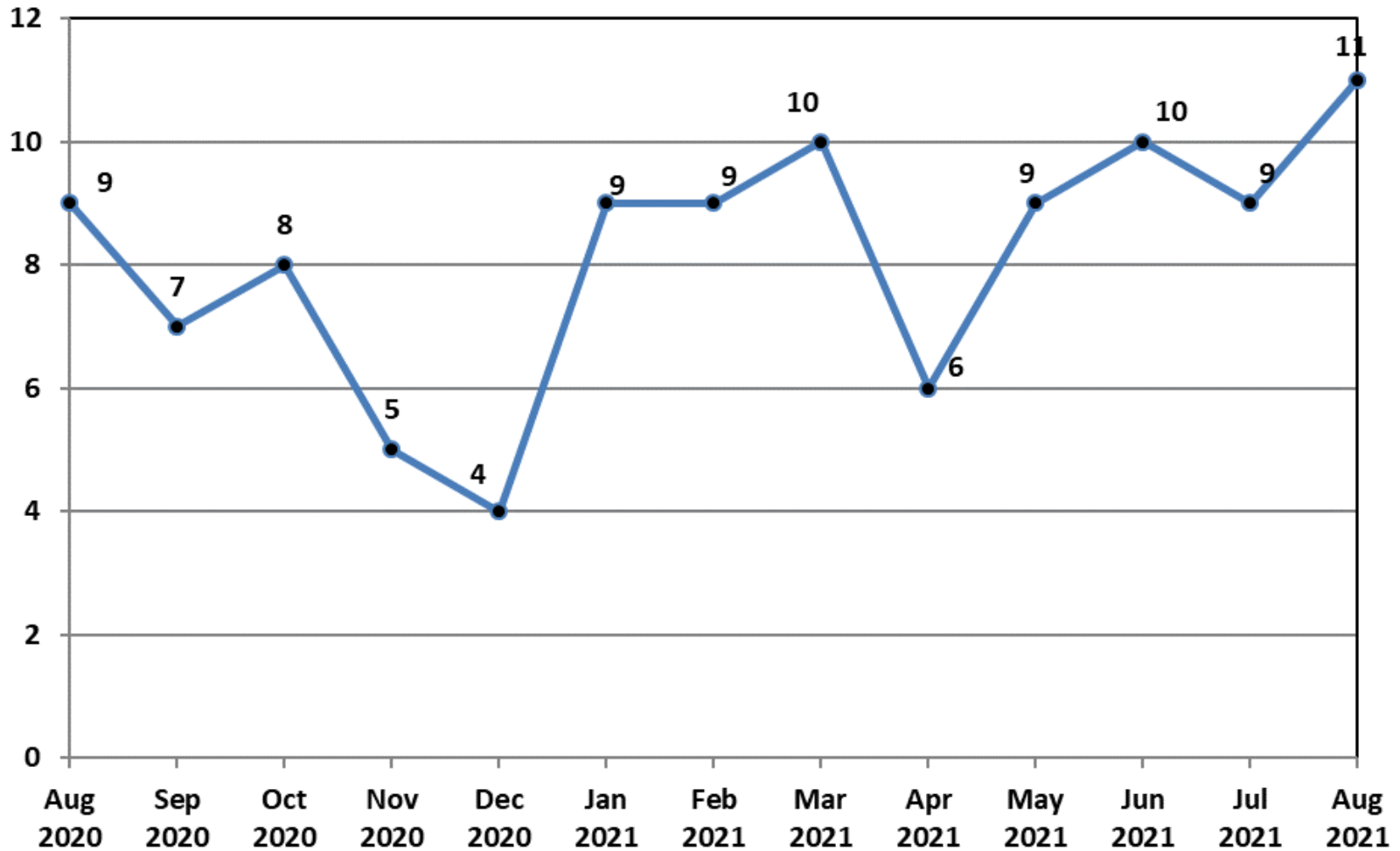
U.S. Registered Rotorcraft Average Fatal Accidents Per Month, FY83-FY21



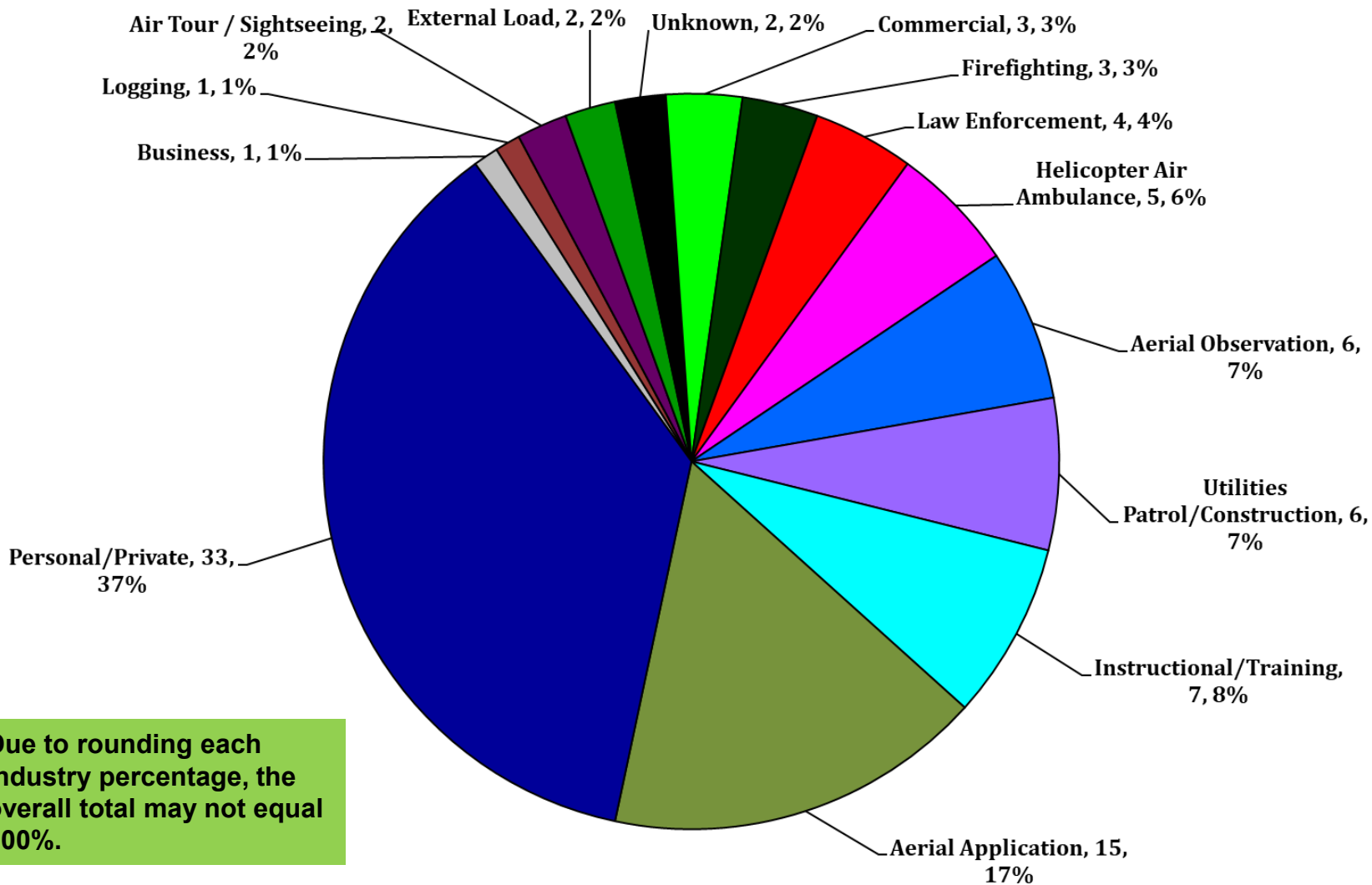
% of U.S. Rotorcraft Accidents with a Fatality (FY21, Oct - Aug)



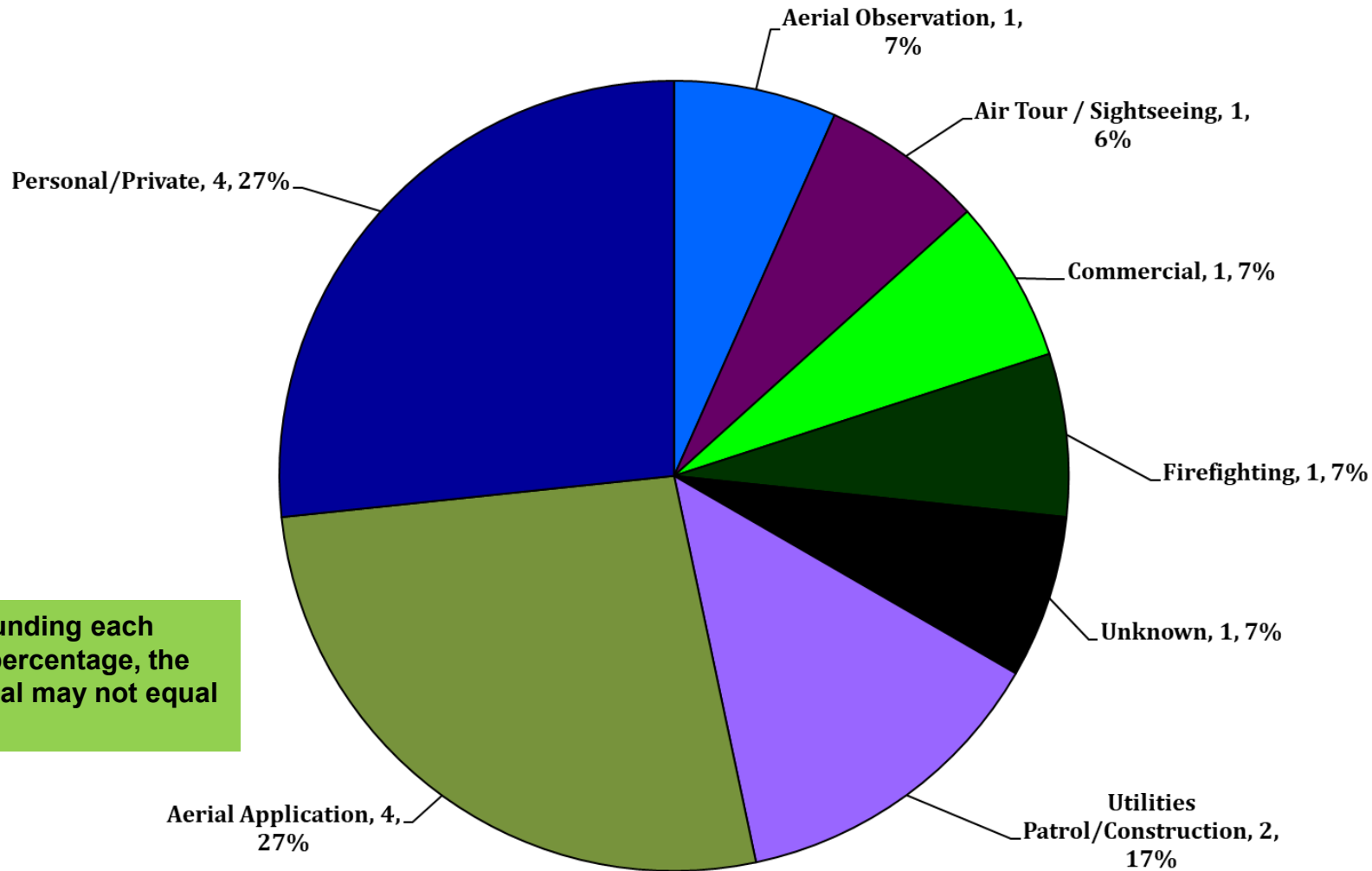
U.S. Registered Rotorcraft 13 Month Rolling Accident Count



FY 21 – Total Accidents by Industry (Oct - Aug)



FY 21 – Total FATAL Accidents by Industry (Oct - Aug)



Due to rounding each Industry percentage, the overall total may not equal 100%.



FY 21 – U.S. Registered Fatal Rotorcraft Accidents

- 8-1-21 – Robinson R66, N7000J, Part 91, Colusa, CA, 4 fatal
 - Personal use flight; Witness observed a/c flying east below 100 feet AGL
 - Witness observed sharp left turn, then descent to ground **NTSB: WPR21FA300**

- 7-19-21 – Robinson R44, N4529J, Part 91, Point Harbor, NC, 2 fatal
 - Personal use flight; over Albermarle Sound about one hour into flight
 - Wreckage found in water; reports of low clouds/mist **NTSB: ERA21LA295**

- 7-19-21 – Robinson R44, N44BJ, Part 137, Elgin, MN, 1 fatal
 - Aerial application; agricultural spray operation of a corn field
 - Preliminary evidence of wire strike contributing to crash **NTSB: CEN21FA330**



FY 21 – U.S. Registered Fatal Rotorcraft Accidents

- 6-25-21 – Rotorcraft Development Corp OH-58A+, N372NS, Part 137, Alpine, AL, 1 fatal
 - Aerial application; agricultural spray operation of a corn field
 - Preliminary evidence of wire strike contributing to crash **NTSB: ERA21LA269**

- 5-25-21 – BHI H60 Helicopters UH-60A, N9FH, Part 133, Leesburg, FL, 4 fatal
 - Firefighting training and equipment calibration flight; equipped w/hose and snorkel
 - Loss of control followed by crash in forested area **NTSB: ERA21FA233**

- 5-18-21 – Blair Helicopter Services OH-58A+, N176SJ, Part 137, Ulysses, KS, 1 fatal
 - Aerial application; agricultural spray operations of a wheat field
 - Preliminary evidence of wire strike contributing to crash **NTSB: CEN21LA225**



FY 21 – U.S. Registered Fatal Rotorcraft Accidents

- 5-2-21 – Robinson R44, N4528T, Part 137, Wingate, NC, 1 fatal
 - Aerial application; spraying fungicide on a wheat field about 15 feet above the crop
 - Preliminary evidence of wire strike contributing to crash **NTSB: ERA21FA200**

- 4-28-21 – Bell 429, N53DE, Part 91, Eden, NC, 1 fatal, 2 serious
 - Powerline patrol; surviving occupant recalls a/c course reversal, then loud noise
 - Descended into trees **NTSB: ERA21FA195**

- 4-22-21 – Robinson R44, N4055N, Part 91, Forkston, PA, 1 fatal
 - Personal use night flight; weather radar showed a/c in snow shower before event
 - Radar track showed slight right turn, then right descending spiral
 - Collided with trees and terrain in remote location **NTSB: ERA21LA191**

- 3-27-21 – Airbus Helicopters AS350B3, N351SH, Part 135, Palmer, AK, 5 fatal, 1 serious
 - Commercial passenger heli-skiing; low groundspeed over ridgeline before crash
 - Debris field 900 feet downslope from top of ridge **NTSB: WPR21FA143**

FY 21 – U.S. Registered Fatal Rotorcraft Accidents

- 3-2-21 – Robinson R66, N1767, Part 91, Kodiak, AK, 1 fatal
 - Personal use; planned day trip from Anchorage to Kodiak to see family
 - Enroute flight track stopped over open ocean waters
 - Search located one pop-out float/minimal debris **NTSB: ANC21LA020**

- 2-15-21 – Bell 206B, N13AT, Part 91, St. Thomas, U.S. Virgin Islands, 4 fatal
 - Sightseeing tour flight around the island
 - Video footage from witness showed smoke from a/c and abrupt yaw
 - Right descending turn into heavily wooded terrain **NTSB: ERA21FA130**

- 12-29-20 – MDHI 369D, N103SU, Part 133, Tuckers Crossing, MS, 1 fatal
 - Utilities/patrol; using externally suspended saw to clear tree limbs near power lines
 - Pilot announced emergency landing; crashed **NTSB: CEN21LA102**

- 12-10-20 – Robinson R44, N7085Z, Part 91, Colorado City, TX, 2 fatal
 - Aerial observation for cattle herding
 - In-flight break up suggested from initial wreckage exam **NTSB: CEN21LA084**

FY 21 – U.S. Registered Fatal Rotorcraft Accidents

Operating Outside the U.S.

- 4-23-21 – Leonardo A119, N119AA, Nuevo Laredo, Mexico, 1 fatal, 2 unknown
- Crashed following departure from Monterrey
 - Post-crash fire

NTSB: GAA21WA088



FY 21 - US Rotorcraft Accidents By Model

MFR	Model	Registered U.S. Fleet Size	Percentage of Total U.S. Fleet	Number of FY21 U.S. Registered Accidents	Percentage of Total FY21 U.S. Registered Accidents
Airbus Helicopters	AS350 (H125)	927	7%	3	3%
	AS355	40	< 1%	1	1%
	BK117 (H145)	213	2%		
	EC120 (H120)	89	1%	1	1%
	EC130 (H130)	264	2%	1	1%
	EC135 (H135)	341	3%		

Only models that comprise at least 1% of U.S. registered rotorcraft are listed unless an accident has occurred.

*Fleet size based on analysis of rotorcraft on FAA registry as of March 2021

FY 21 - US Rotorcraft Accidents By Model

MFR	Model	Registered U.S. Fleet Size	Percentage of Total U.S. Fleet	Number of FY21 U.S. Registered Accidents	Percentage of Total FY21 U.S. Registered Accidents
Bell	206Bs	912	7%	8	9%
	206Ls	557	4%	2	2%
	212	83	1%	1	1%
	407	791	6%	2	2%
	412	86	1%		
	429	120	1%	1	1%
	505	101	1%		

Only models that comprise at least 1% of U.S. registered rotorcraft are listed unless an accident has occurred.

*Fleet size based on analysis of rotorcraft on FAA registry as of March 2021



FY 21 - US Rotorcraft Accidents By Model

MFR	Model	Registered U.S. Fleet Size	Percentage of Total U.S. Fleet	Number of FY21 U.S. Registered Accidents	Percentage of Total FY21 U.S. Registered Accidents
Robinson	R-22	832	7%	4	4%
	R-44	1,686	13%	26	29%
	R-66	306	2%	7	8%

Only models that comprise at least 1% of U.S. registered rotorcraft are listed unless an accident has occurred.

*Fleet size based on analysis of rotorcraft on FAA registry as of March 2021



FY 21 - US Rotorcraft Accidents By Model

MFR	Model	Registered U.S. Fleet Size	Percentage of Total U.S. Fleet	Number of FY21 U.S. Registered Accidents	Percentage of Total FY21 U.S. Registered Accidents
Sikorsky	S-61	92	1%		
	S-76	228	2%		
	S-92	89	1%		

Only models that comprise at least 1% of U.S. registered rotorcraft are listed unless an accident has occurred.

*Fleet size based on analysis of rotorcraft on FAA registry as of March 2021



FY 21 - US Rotorcraft Accidents By Model

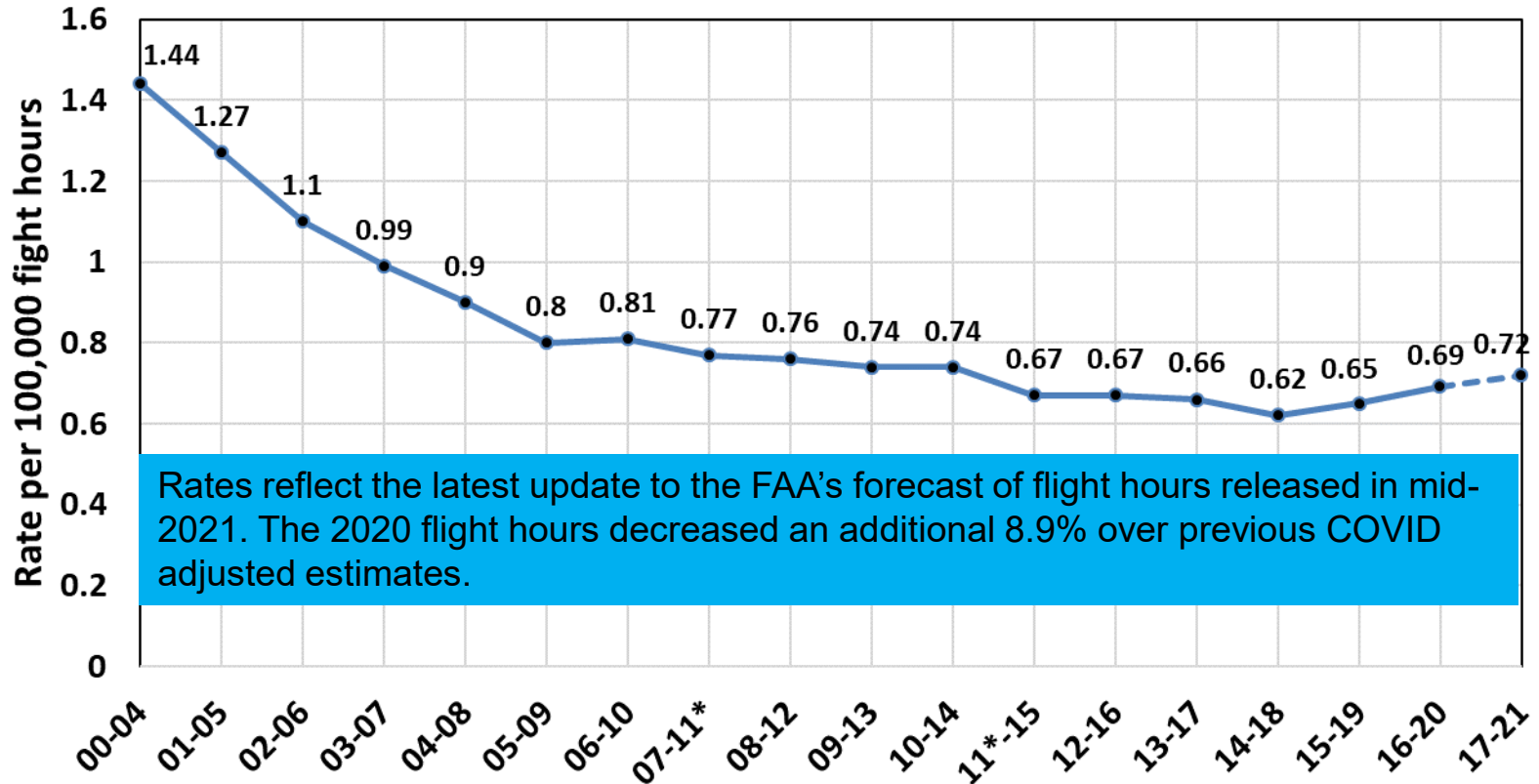
MFR	Model	Registered U.S. Fleet Size	Percentage of Total U.S. Fleet	Number of FY21 U.S. Registered Accidents	Percentage of Total FY21 U.S. Registered Accidents
Enstrom	280	122	1%	1	1%
	480	65	1%	1	1%
	F28	157	1%	2	2%
Hiller	UH-12/H-23	273	2%	1	1%
Leonardo (formerly Agusta Westland)	A109	166	1%	1	1%
	A119	136	1%	2	2%
	AW139	129	1%		
MDHI	369	638	5%	12	13%
	600N	29	< 1%	1	1%
Restricted Category (all TCs)	HH-1/TH-1/UH-1	530	4%	2	2%
	OH-58	394	3%	4	4%
	H-60	229	2%	1	1%
Schweizer Rotorcraft Services Group	269/300/TH-55	487	4%	3	3%
Scott's Bell	47	523	4%	2	2%

Only models that comprise at least 1% of U.S. registered rotorcraft are listed unless an accident has occurred.

*Fleet size based on analysis of rotorcraft on FAA registry as of March 2021

U.S. Helicopter Safety Team (USHST) 5 Year Average Fatal Accident Rate (CY)

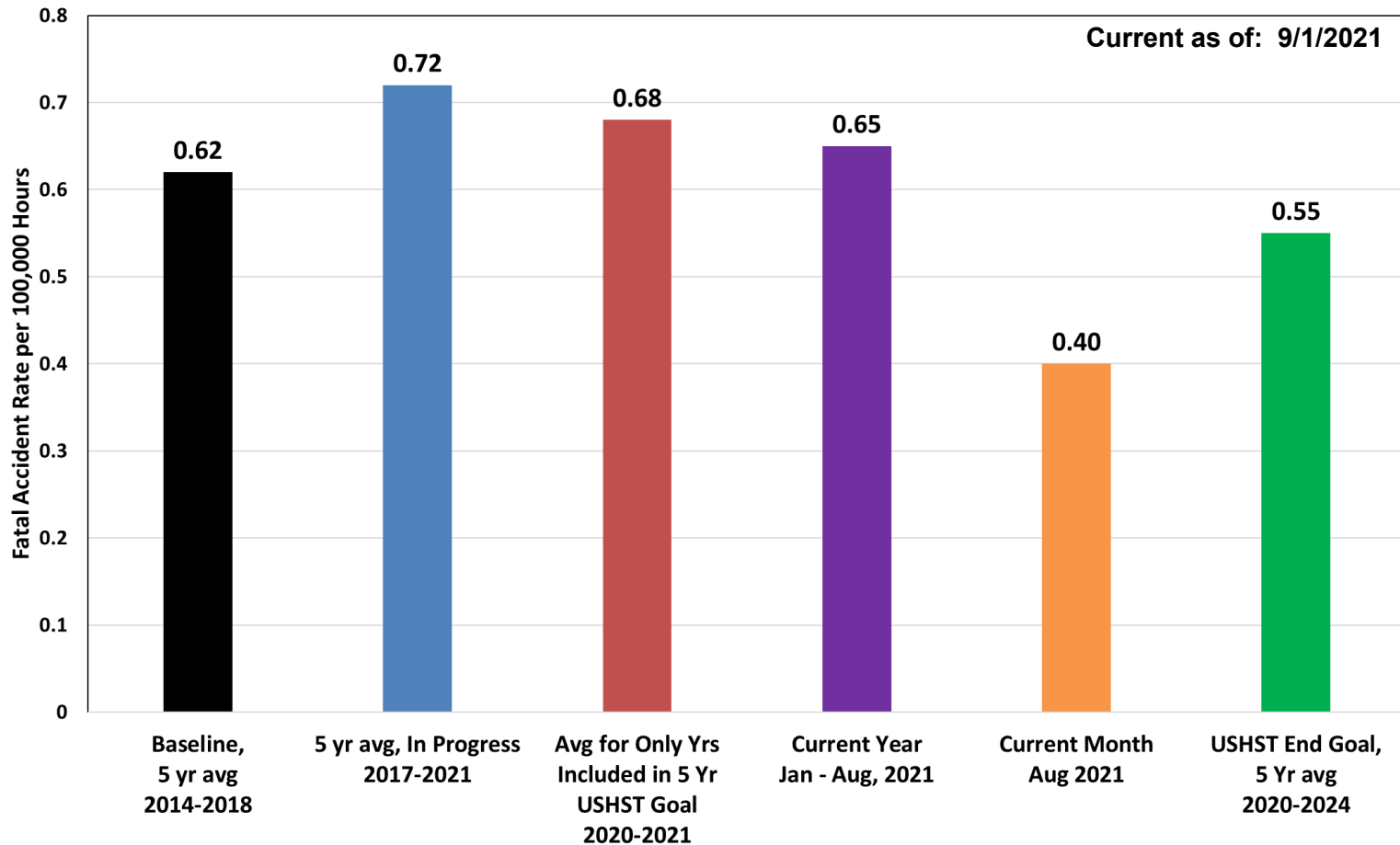
Current as of: 9/1/2021



Goal: By 2025, reduce the 5 year average fatal accident rate to 0.55 per 100K hours



U.S. Helicopter Safety Team (USHST) Key Fatal Accident Rate Markers (CY)



Rates reflect the latest update to the FAA's forecast of flight hours released in mid-2021. The 2020 flight hours decreased an additional 8.9% over previous COVID adjusted estimates.