



Federal Aviation
Administration

Rotorcraft Directorate ASW-100

Monthly Accident Briefing

December 2015

By: ASW-112, Safety Management Group



FY 16 – U.S. Registered Rotorcraft Accidents

Cumulative Counts – 30 Accidents, 3 Fatal Accidents, 8 Fatalities

Same time period, previous FY: 25 Accidents, 5 Fatal Accidents, 11 Fatalities

	Oct	Nov	Dec	Jan	Feb	Mar	Apr	May	Jun	Jul	Aug	Sep	Total
Accidents:	10	12	8										30
Fatal:	0	1	2										3
Fatalities:	0	2	6										8

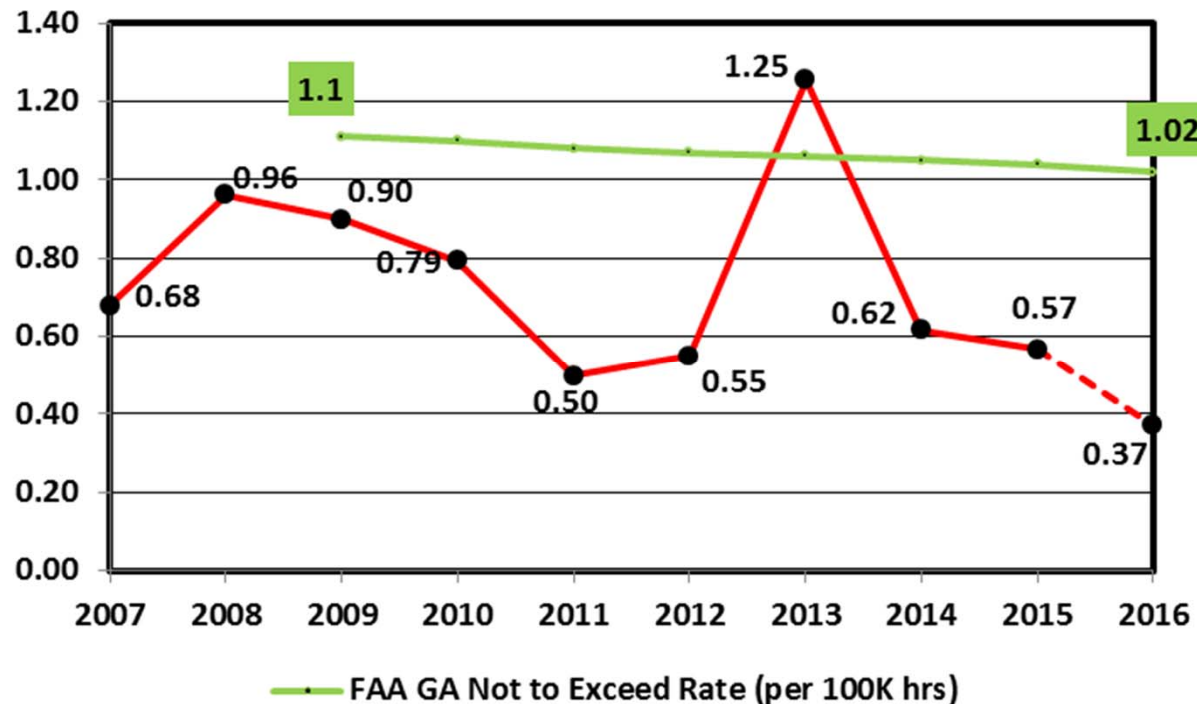
Data Source: FAA, NTSB Databases. Includes only events classified as accidents and does not include incidents. The accident numbers for each month of the Fiscal Year may vary from the previous monthly briefing based on analysis between FAA and NTSB databases for the specified month. The NTSB database may include accidents that were not reported to this office resulting in slightly different numbers.

Accident Operations Summary (Cumulative)

Acronyms: HAA = Helicopter Air Ambulance, ENG = Electronic News Gathering, GA = General Aviation, GOM = Gulf of Mexico

	HAA 91/ 135	GOM 91/ 135	Part 133	Part 135 Other	Air Tour 91/135/136	Part 137	ENG 91/ 135	GA 91	N Reg Outside U.S.
Accidents:	5	1	3	1	1	2		17	
Fatal:	2							1	
Fatalities:	6							2	

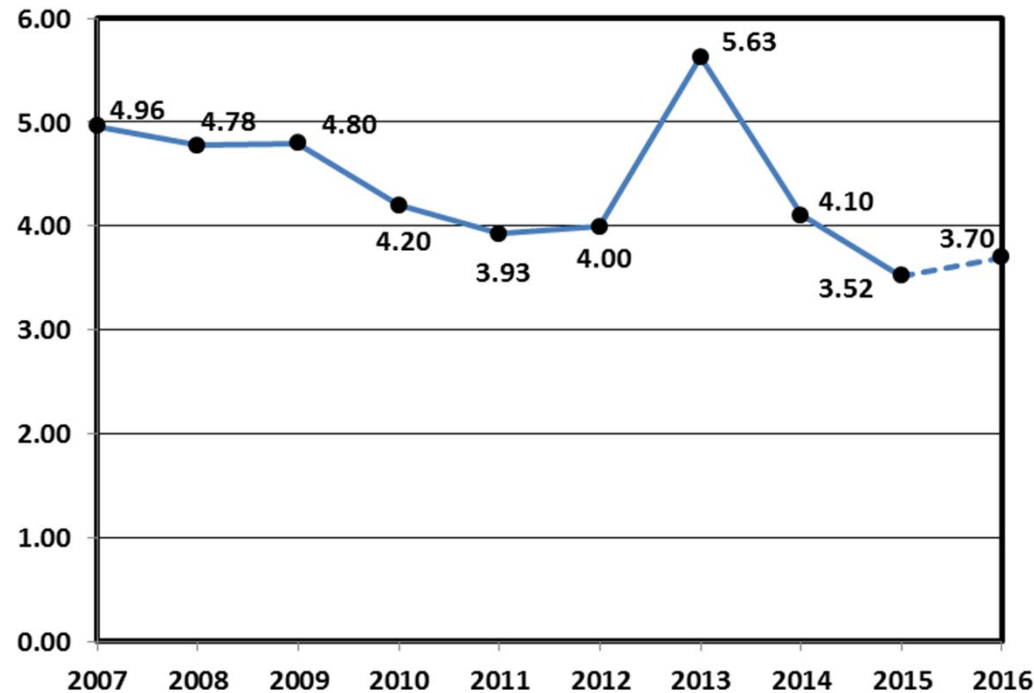
Estimated Rotorcraft FATAL Accident Rate (per 100,000 hours) – 10 Year Lookback, FY16 YTD



Rate calculation based on the following:

- 1) Accident totals compiled by ASW-112.
- 2) Historic rotorcraft flight hours extracted from General Aviation and Part 135 Activity Survey. The survey categorizes flight hours by calendar year. Assumption was that hours would be comparable if used for fiscal year calculations.
- 3) FYs 11 & 15 rotorcraft flight hours and the projected hours for FY 16 were based on the FAA's FY2015-2035 forecast.
- 4) FY 16 rotorcraft flight hours to date were based on a sample of reported monthly hours distribution provided by various industry sectors.

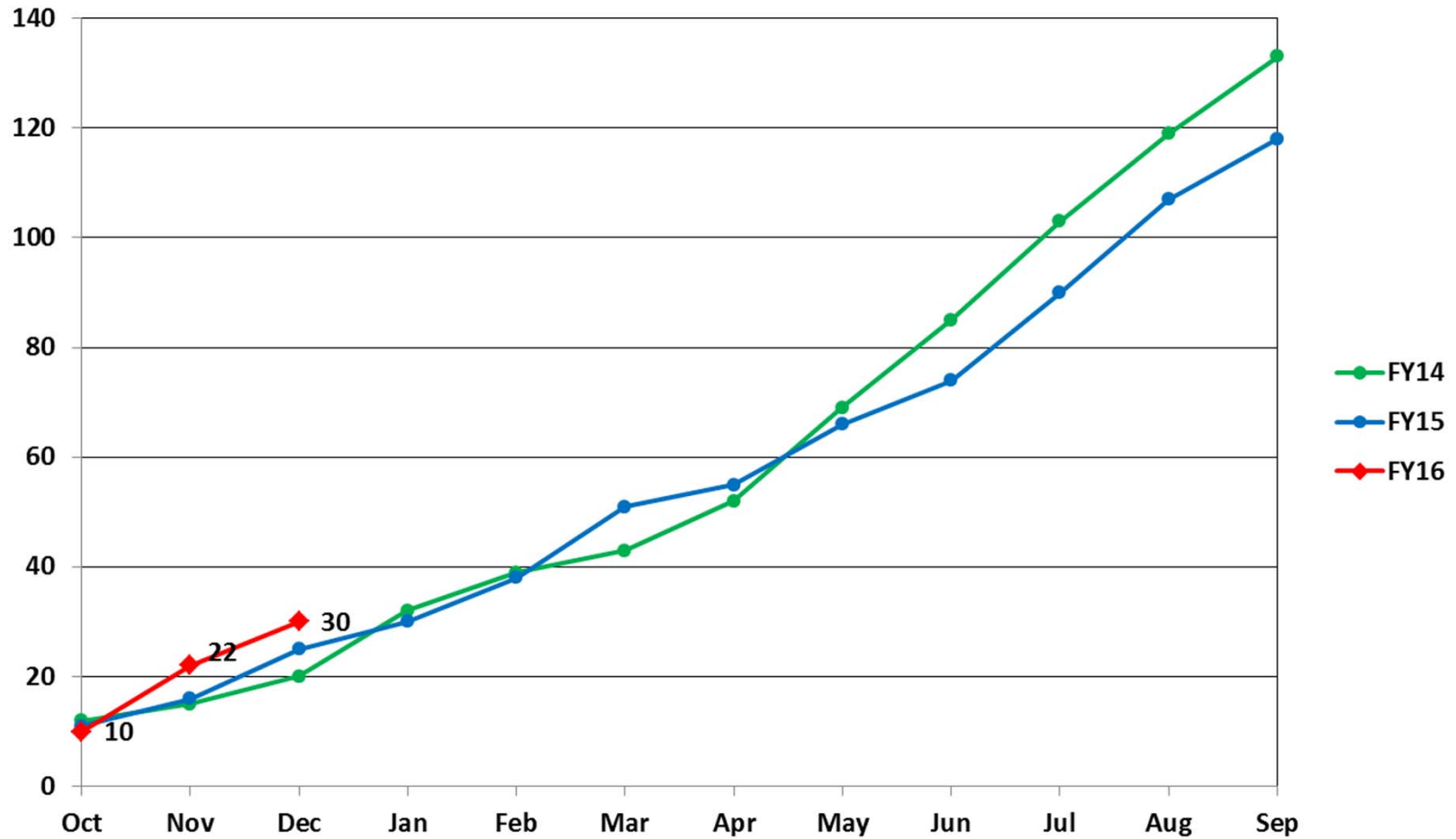
Estimated Rotorcraft Accident Rate (per 100,000 hours) – 10 Year Lookback, FY16 YTD



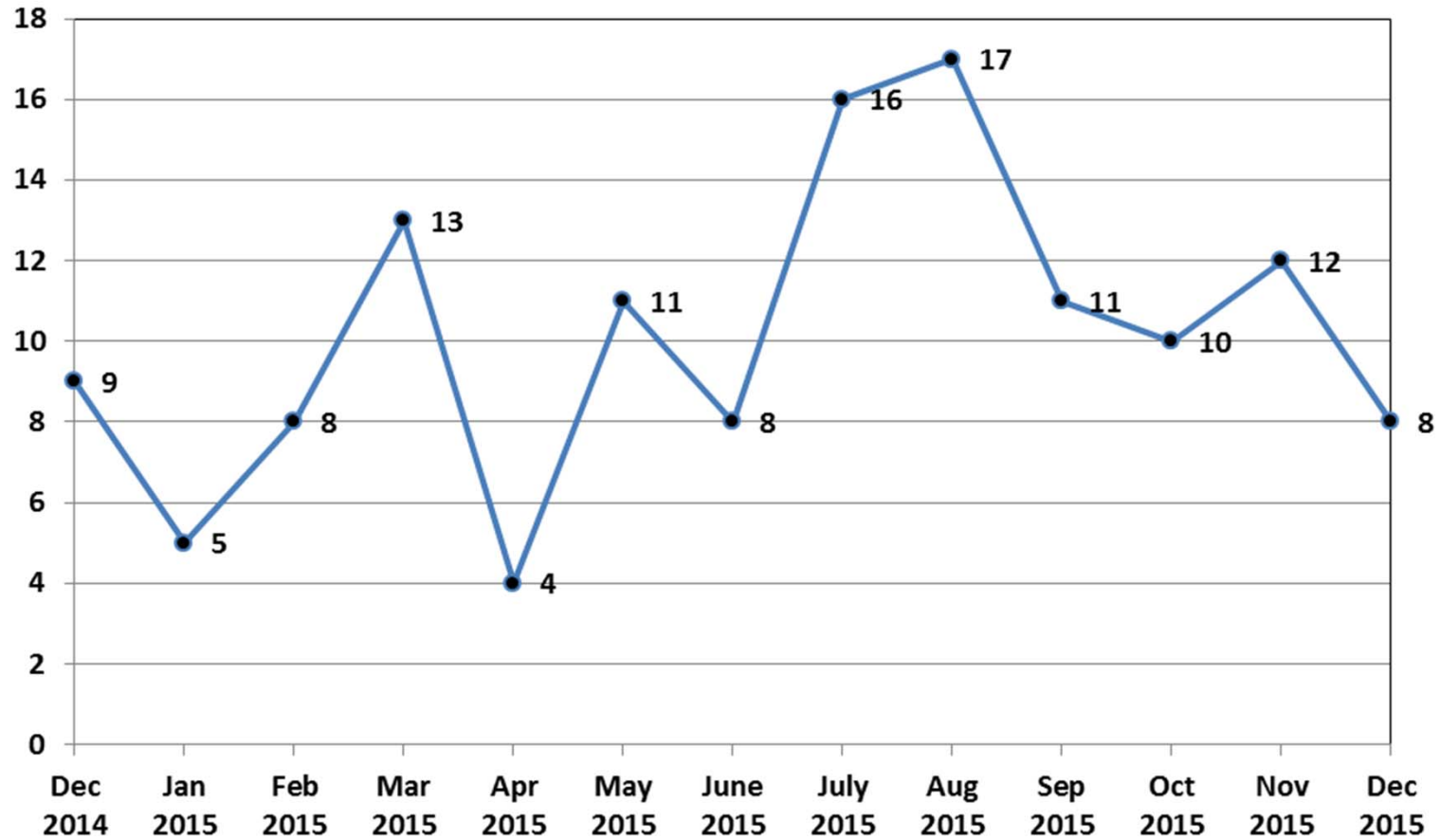
Rate calculation based on the following:

- 1) Accident totals compiled by ASW-112.
- 2) Historic rotorcraft flight hours extracted from General Aviation and Part 135 Activity Survey. The survey categorizes flight hours by calendar year. Assumption was that hours would be comparable if used for fiscal year calculations.
- 3) FYs 11 & 15 rotorcraft flight hours and the projected hours for FY 16 were based on the FAA's FY2015-2035 forecast.
- 4) FY 16 rotorcraft flight hours to date were based on a sample of reported monthly hours distribution provided by various industry sectors.

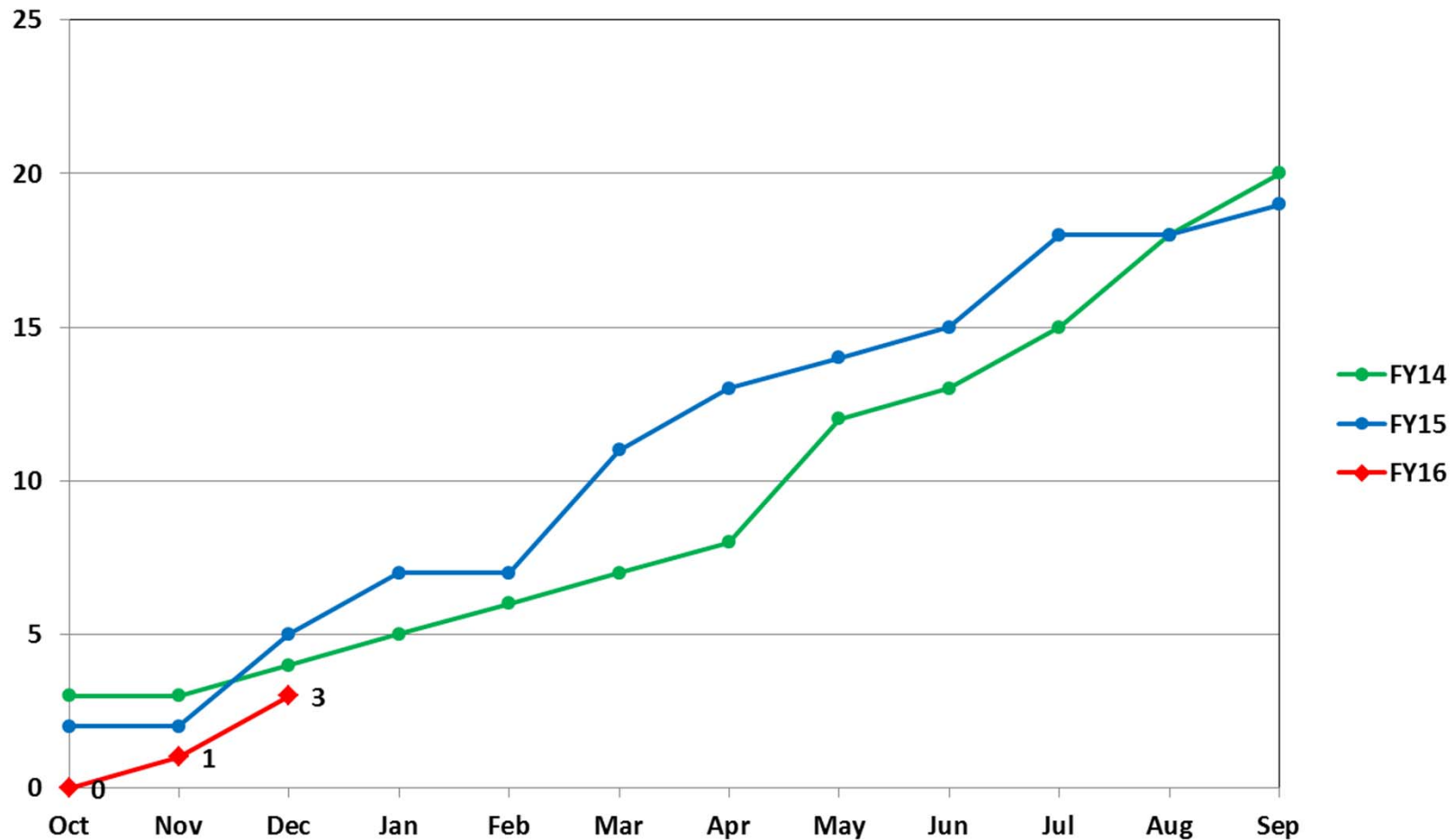
U.S. Registered Rotorcraft Cumulative Accident Count: FY14 - 16



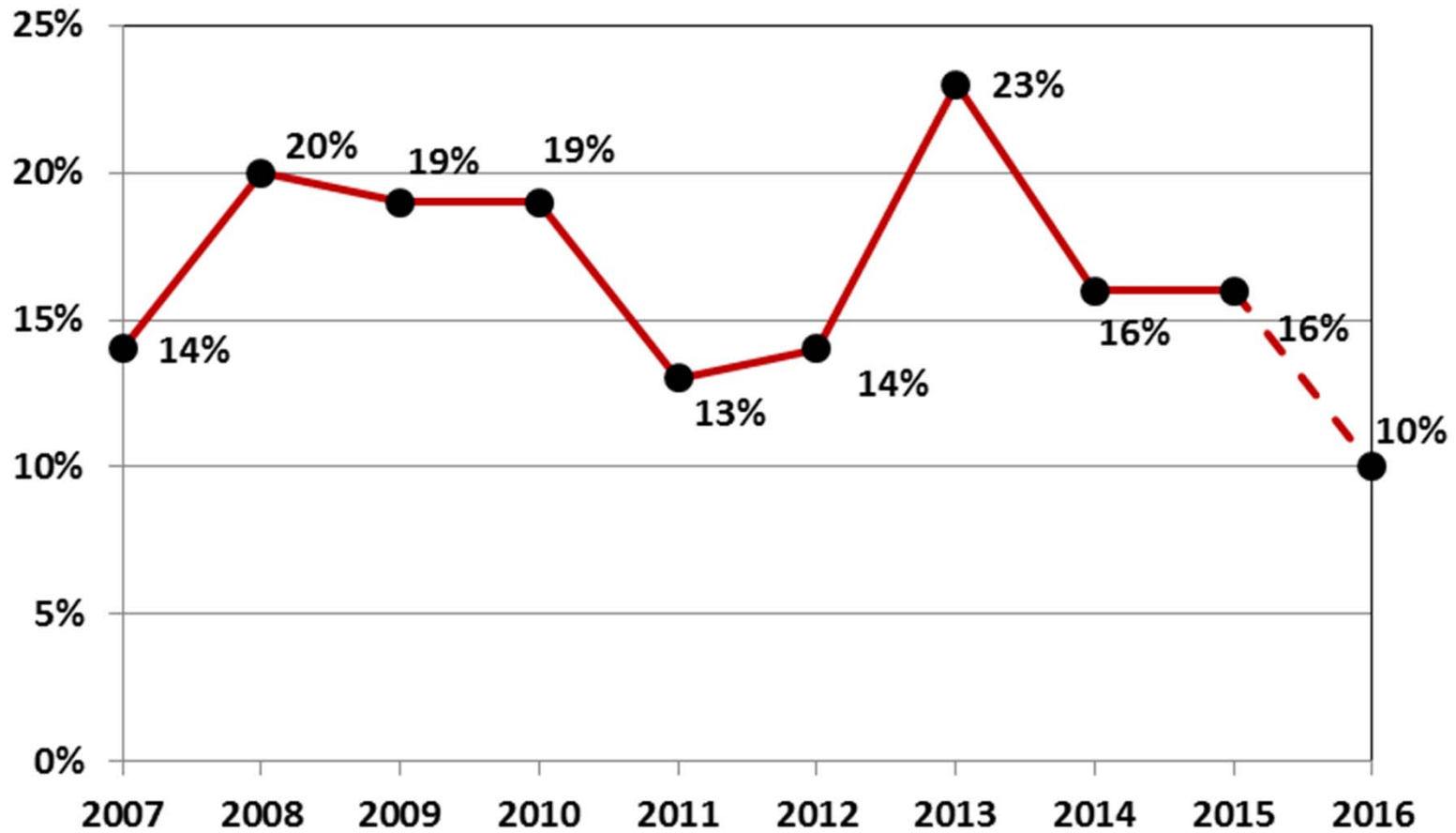
U.S. Registered Rotorcraft 13 Month Rolling Accident Count



U.S. Registered Rotorcraft Cumulative Fatal Accident Count: FY14 - 16



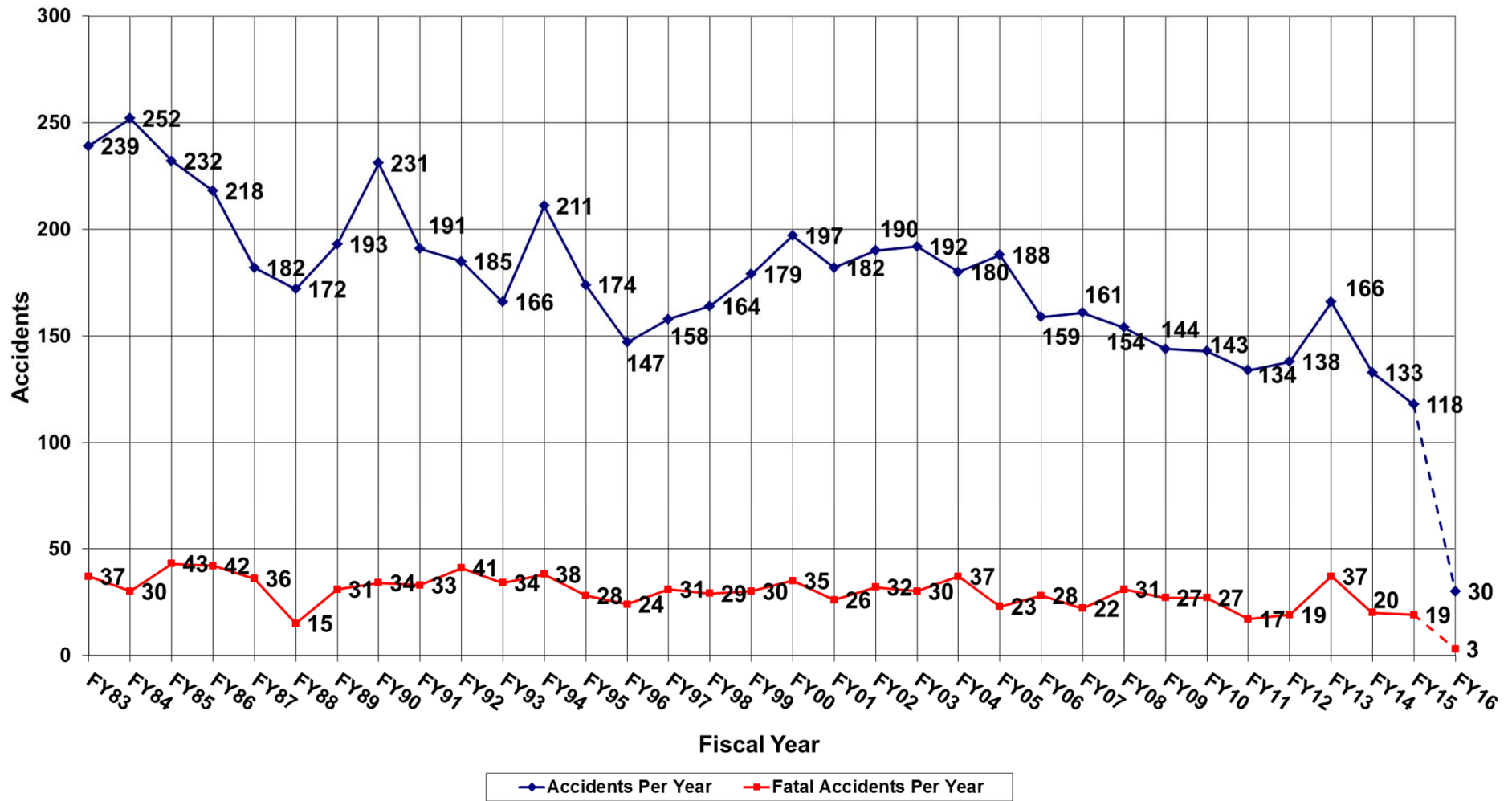
% of Rotorcraft Accidents with a Fatality (FY16, Oct-Dec)



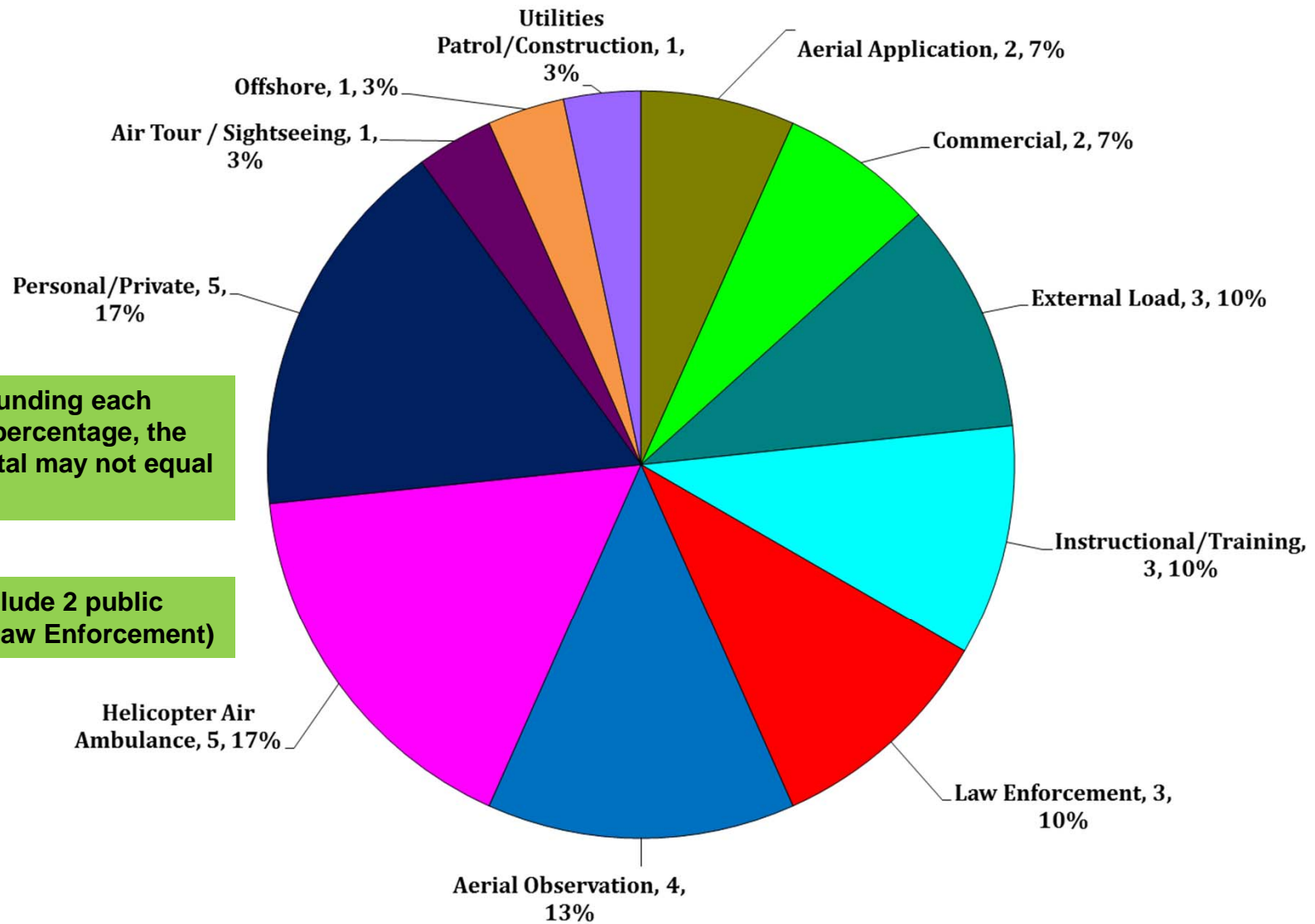
FY 16 – U.S. Registered Fatal Rotorcraft Accidents

- 12-15-15 – Airbus Helicopters AS350B3, N74317, Superior, AZ, Part 135, 2 Fatal, 1 Serious
– Air Ambulance positioning flight following patient drop off
– Impacted mountainous terrain after refueling NTSB: [WPR16FA040](#)
- 12-10-15 – Bell 407, N408FC, McFarland, CA, Part 135, 4 Fatal
– Air Ambulance night flight conducting patient transfer
– Impacted terrain during cruise flight NTSB: [WPR16FA037](#)
- 11-18-15 – Airbus Helicopters AS350B3, N711BE, Carlsbad, CA, Part 91, 2 Fatal
– Multiple attempts to position onto a moveable helipad at airport
– Departed controlled flight during last attempt NTSB: [WPR16FA029](#)

U.S. Registered Rotorcraft Accidents FY83 - FY16



FY 16 – Total Accidents by Industry (Oct-Dec 2015)

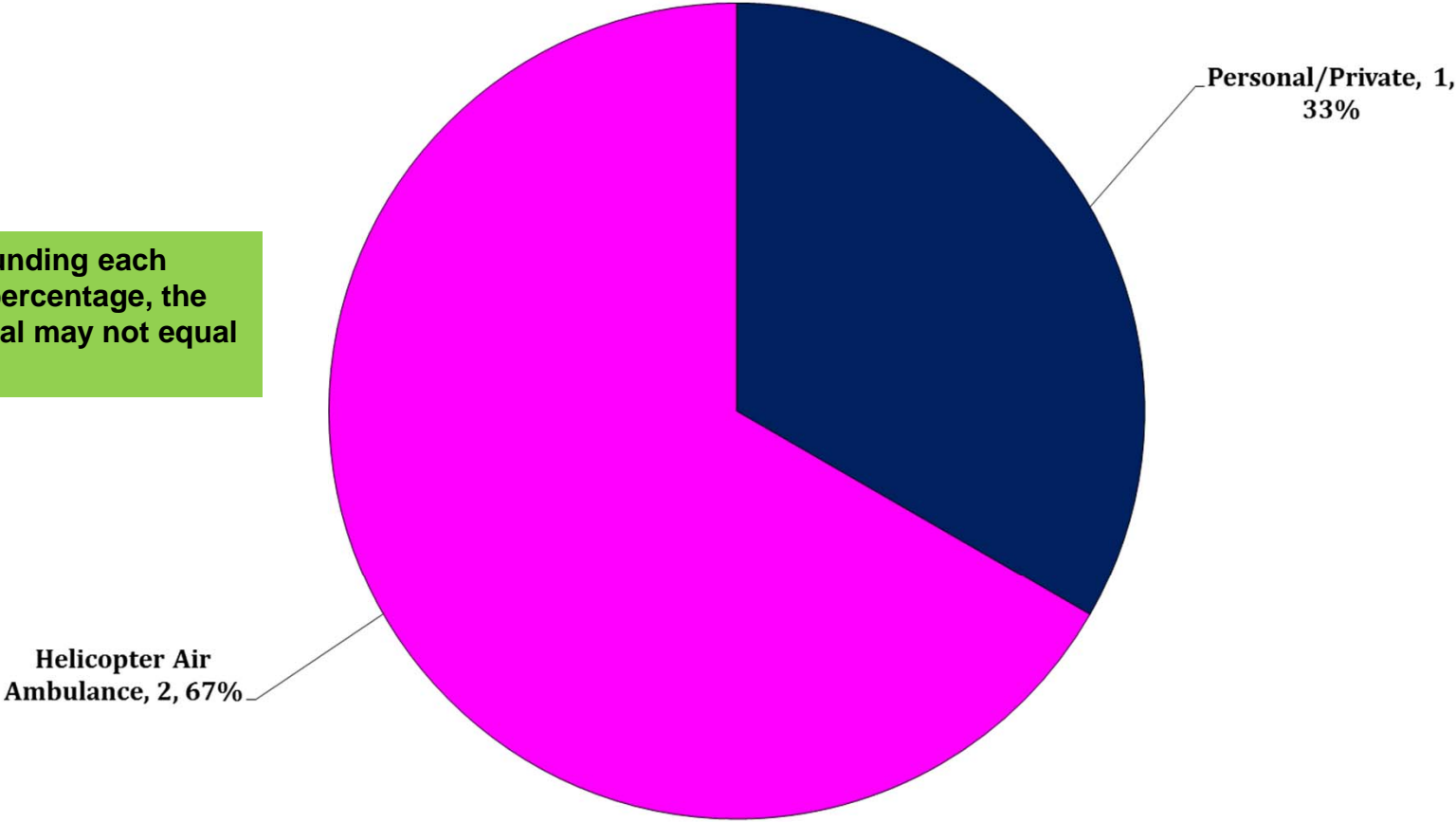


Due to rounding each industry percentage, the overall total may not equal 100%.

Totals include 2 public aircraft (Law Enforcement)

FY 16 – Total FATAL Accidents by Industry (Oct-Dec 2015)

Due to rounding each Industry percentage, the overall total may not equal 100%.



FY 16 - US Rotorcraft Accidents By Model

MFR	Model	Registered U.S. Fleet Size	Percentage of Total U.S. Fleet	Number of FY16 U.S. Registered Accidents	Percentage of Total FY16 U.S. Registered Accidents
Airbus Helicopters	AS350	837	8%	3	10%
	BK117	174	2%		
	BO105	73	1%		
	EC120	94	1%	1	3%
	EC130	186	2%		
	EC135	260	2%	2	7%

Only models that comprise at least 1% of U.S. registered rotorcraft are listed unless an accident has occurred.

*Fleet size based on analysis of rotorcraft on FAA registry as of Feb 2015

FY 16 - US Rotorcraft Accidents By Model

MFR	Model	Registered U.S. Fleet Size	Percentage of Total U.S. Fleet	Number of FY16 U.S. Registered Accidents	Percentage of Total FY16 U.S. Registered Accidents
Bell	206 Jet Ranger	1,024	9%	2	7%
	206 Long Ranger	553	5%	1	3%
	212	61	1%		
	407	639	6%	3	10%
	412	95	1%		

Only models that comprise at least 1% of U.S. registered rotorcraft are listed unless an accident has occurred.

*Fleet size based on analysis of rotorcraft on FAA registry as of Feb 2015

FY 16 - US Rotorcraft Accidents By Model

MFR	Model	Registered U.S. Fleet Size	Percentage of Total U.S. Fleet	Number of FY16 U.S. Registered Accidents	Percentage of Total FY16 U.S. Registered Accidents
Robinson	R-22	1,024	9%	2	7%
	R-44	1,447	13%	7	23%
	R-66	149	1%		

Only models that comprise at least 1% of U.S. registered rotorcraft are listed unless an accident has occurred.

*Fleet size based on analysis of rotorcraft on FAA registry as of Feb 2015



FY 16 - US Rotorcraft Accidents By Model

MFR	Model	Registered U.S. Fleet Size	Percentage of Total U.S. Fleet	Number of FY16 U.S. Registered Accidents	Percentage of Total FY16 U.S. Registered Accidents
Sikorsky	(Schweizer) 269/300/TH-55	642	6%	2	7%
	S-76	224	2%		
	S-92	80	1%		

Only models that comprise at least 1% of U.S. registered rotorcraft are listed unless an accident has occurred.

*Fleet size based on analysis of rotorcraft on FAA registry as of Feb 2015

FY 16 - US Rotorcraft Accidents By Model

MFR	Model	Registered U.S. Fleet Size	Percentage of Total U.S. Fleet	Number of FY16 U.S. Registered Accidents	Percentage of Total FY16 U.S. Registered Accidents
Agusta	A109	142	1%		
	A119	78	1%		
	AW139	106	1%		
Brantly	B-2	83	1%		
Enstrom	280	94	1%		
	480	80	1%		
	F28	182	2%		
Hiller	UH-12/H-23	296	3%		
MDHI	369	578	5%	3	10%
	500N	37	< 1%	1	3%
	600N	23	< 1%	1	3%
Restricted Category (all TCs)	HH-1/TH-1/UH-1	250	2%		
	OH-58	110	1%		
Scott's Bell	47	645	6%	2	7%

Only models that comprise at least 1% of U.S. registered rotorcraft are listed unless an accident has occurred.

*Fleet size based on analysis of rotorcraft on FAA registry as of Feb 2015

