



**Federal Aviation
Administration**

Rotorcraft Standards Branch

AIR-680

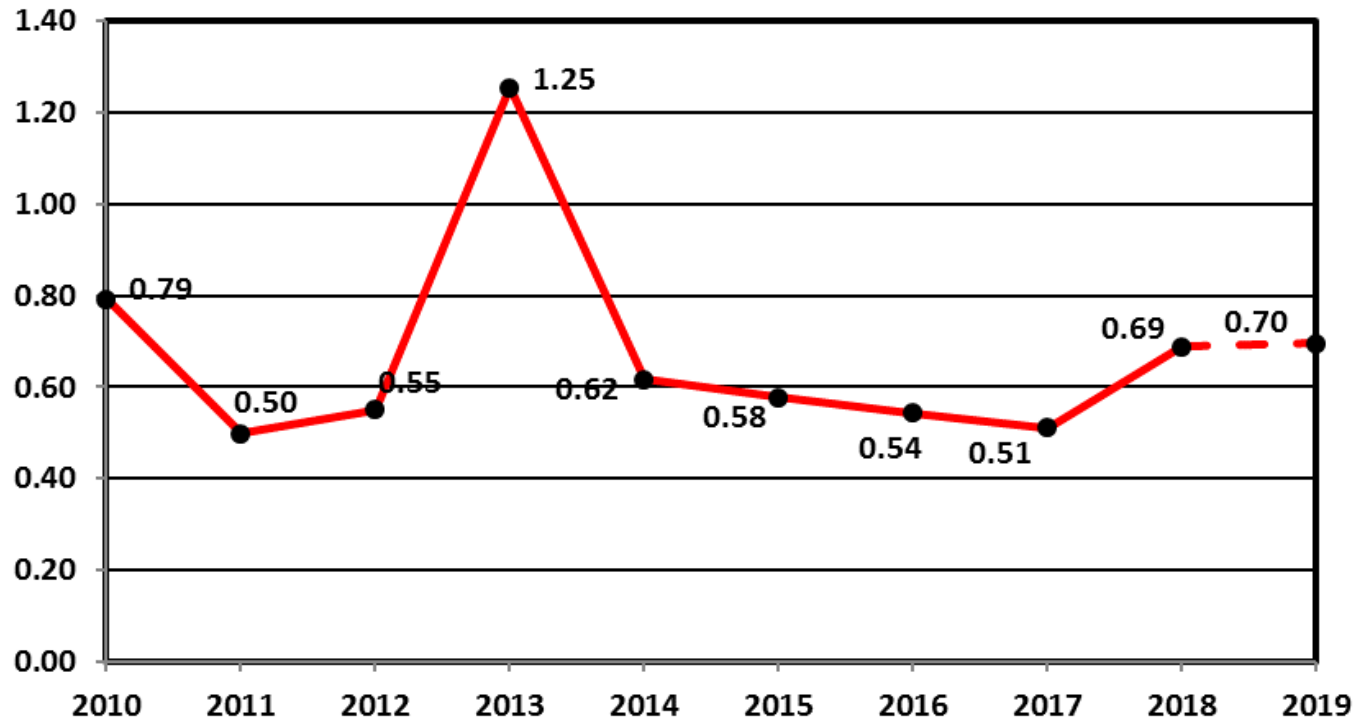
Monthly Accident Briefing

Feb 2019

**By: AIR-682, Safety Management Section,
Rotorcraft Standards Branch**



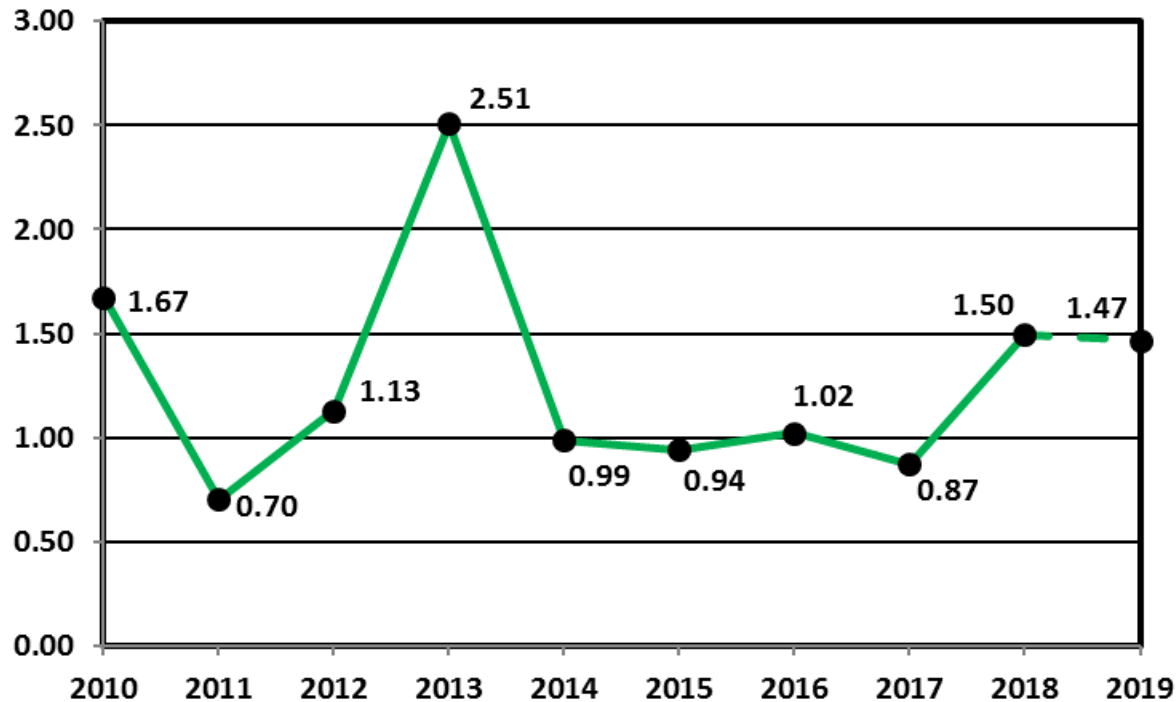
Estimated U.S. Rotorcraft FATAL Accident Rate (per 100,000 hours) – 10 Year Lookback



Rate calculation based on the following:

- 1) Accident totals compiled by AIR-682.
- 2) Historic rotorcraft flight hours extracted from General Aviation and Part 135 Activity Survey. The survey categorizes flight hours by calendar year. Assumption was that hours would be comparable if used for fiscal year calculations.
- 3) FY 11 rotorcraft flight hours and the projected hours for FY 18-19 were based on the FAA's FY2018-2038 forecast (released March 2018).

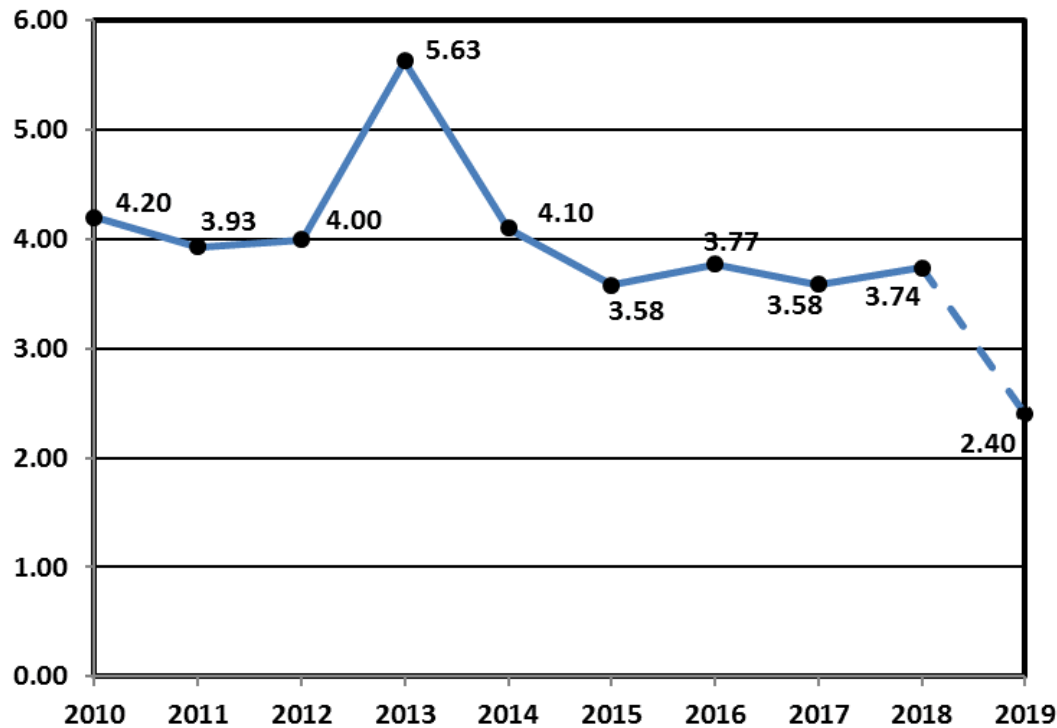
Estimated U.S. Rotorcraft Fatality Rate (per 100,000 hours) – 10 Year Lookback



Rate calculation based on the following:

- 1) Accident totals compiled by AIR-682.
- 2) Historic rotorcraft flight hours extracted from General Aviation and Part 135 Activity Survey. The survey categorizes flight hours by calendar year. Assumption was that hours would be comparable if used for fiscal year calculations.
- 3) FY 11 rotorcraft flight hours and the projected hours for FY 18-19 were based on the FAA's FY2018-2038 forecast (released March 2018).

Estimated U.S. Rotorcraft Accident Rate (per 100,000 hours) – 10 Year Lookback



Rate calculation based on the following:

- 1) Accident totals compiled by AIR-682.
- 2) Historic rotorcraft flight hours extracted from General Aviation and Part 135 Activity Survey. The survey categorizes flight hours by calendar year. Assumption was that hours would be comparable if used for fiscal year calculations.
- 3) FY 11 rotorcraft flight hours and the projected hours for FY 18-19 were based on the FAA's FY2018-2038 forecast (released March 2018).

FY 19 – U.S. Registered Rotorcraft Event Counts

	Oct	Nov	Dec	Jan	Feb	Mar	Apr	May	Jun	Jul	Aug	Sep	YTD
Accidents:	7	8	3	10	3								31
Fatal Acc:	3	4	0	2	0								9
Fatalities:	4	11	0	4	0								19

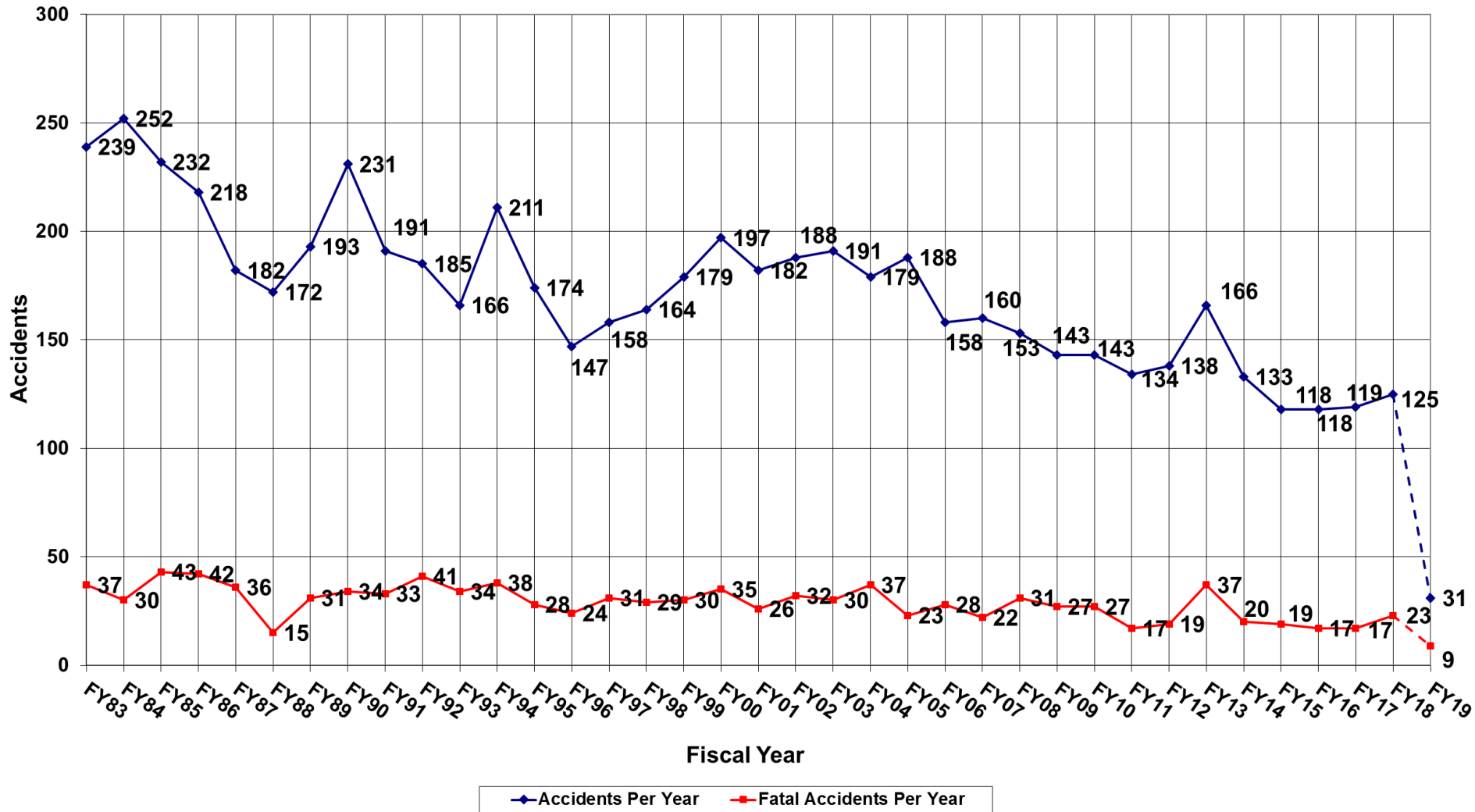
Same time period, previous FY: 47 Accidents, 11 Fatal Accidents, 26 Fatalities

Data Source: FAA, NTSB Databases. Includes only events classified as accidents and does not include incidents. The accident numbers for each month of the Fiscal Year may vary from the previous monthly briefing based on analysis between FAA and NTSB databases for the specified month. The NTSB database may include accidents that were not reported to this office resulting in slightly different numbers.

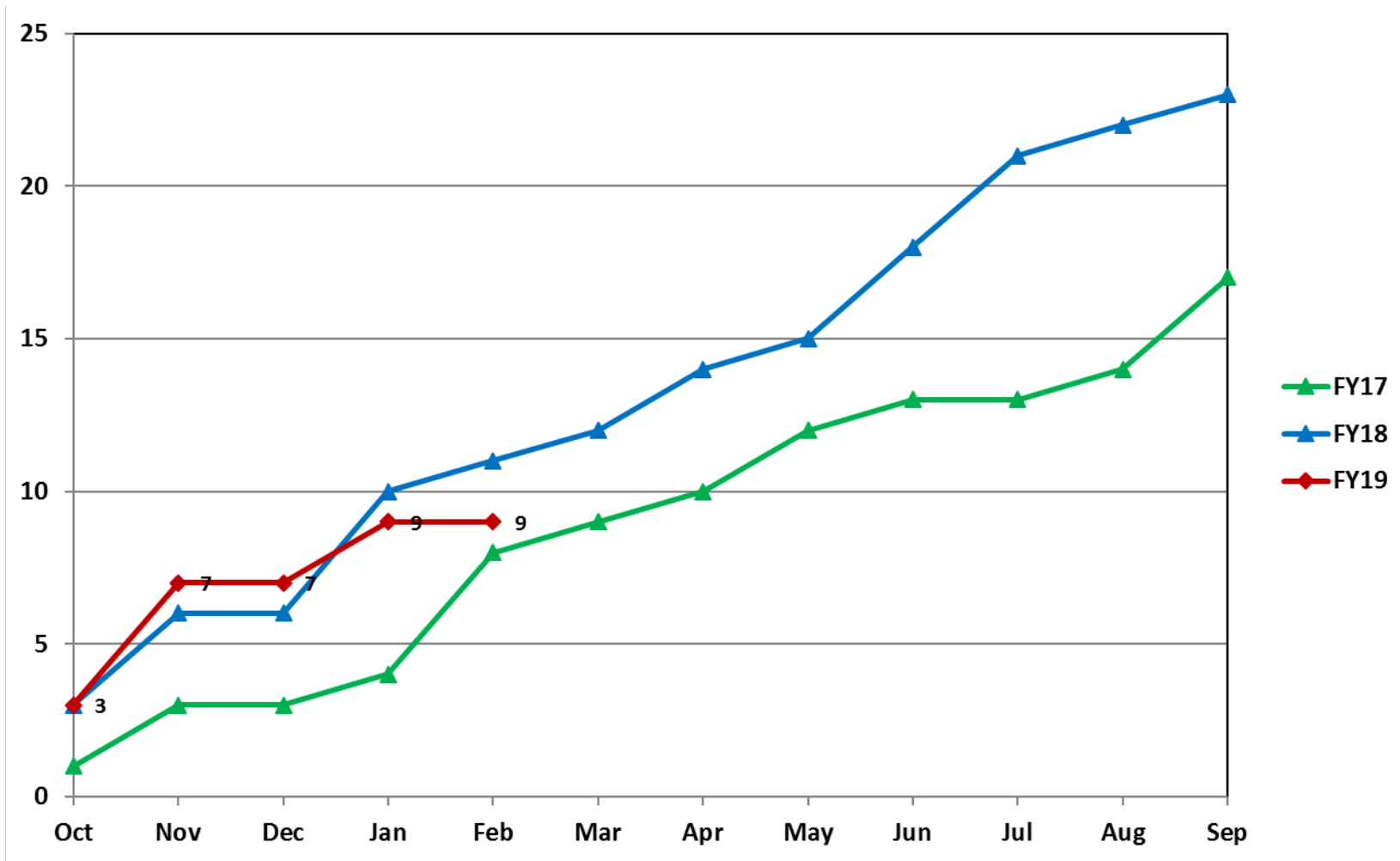
Estimated Rates by Month (per 100,000 flight hours)

	Oct	Nov	Dec	Jan	Feb	Mar	Apr	May	Jun	Jul	Aug	Sep	YTD
Accidents:	2.29	3.06	1.31	4.3	1.13								2.40
Fatal Acc:	0.98	1.53	0	0.86	0								0.70
Fatalities:	1.31	4.21	0	1.72	0								1.47

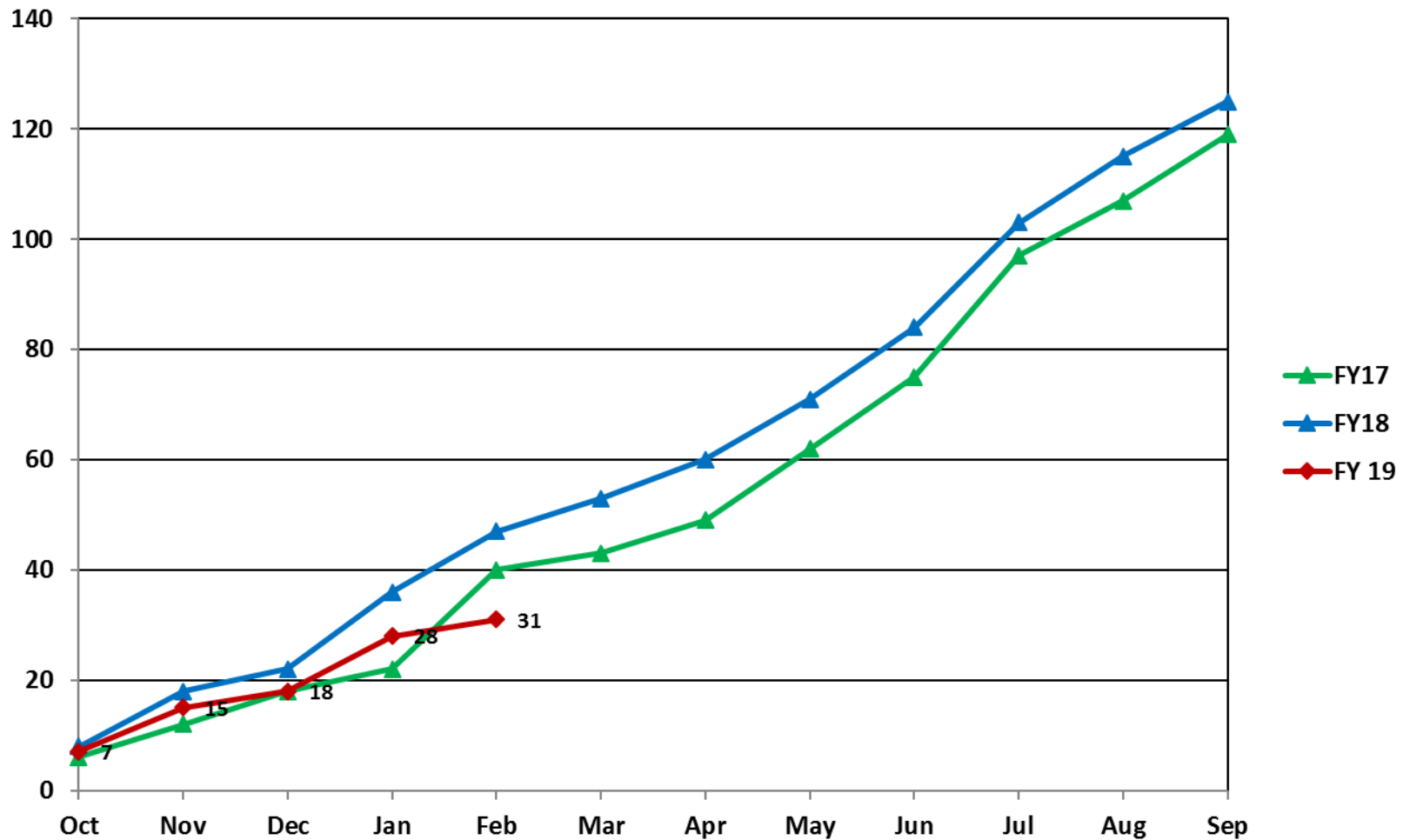
U.S. Registered Rotorcraft Accidents FY83 - FY19



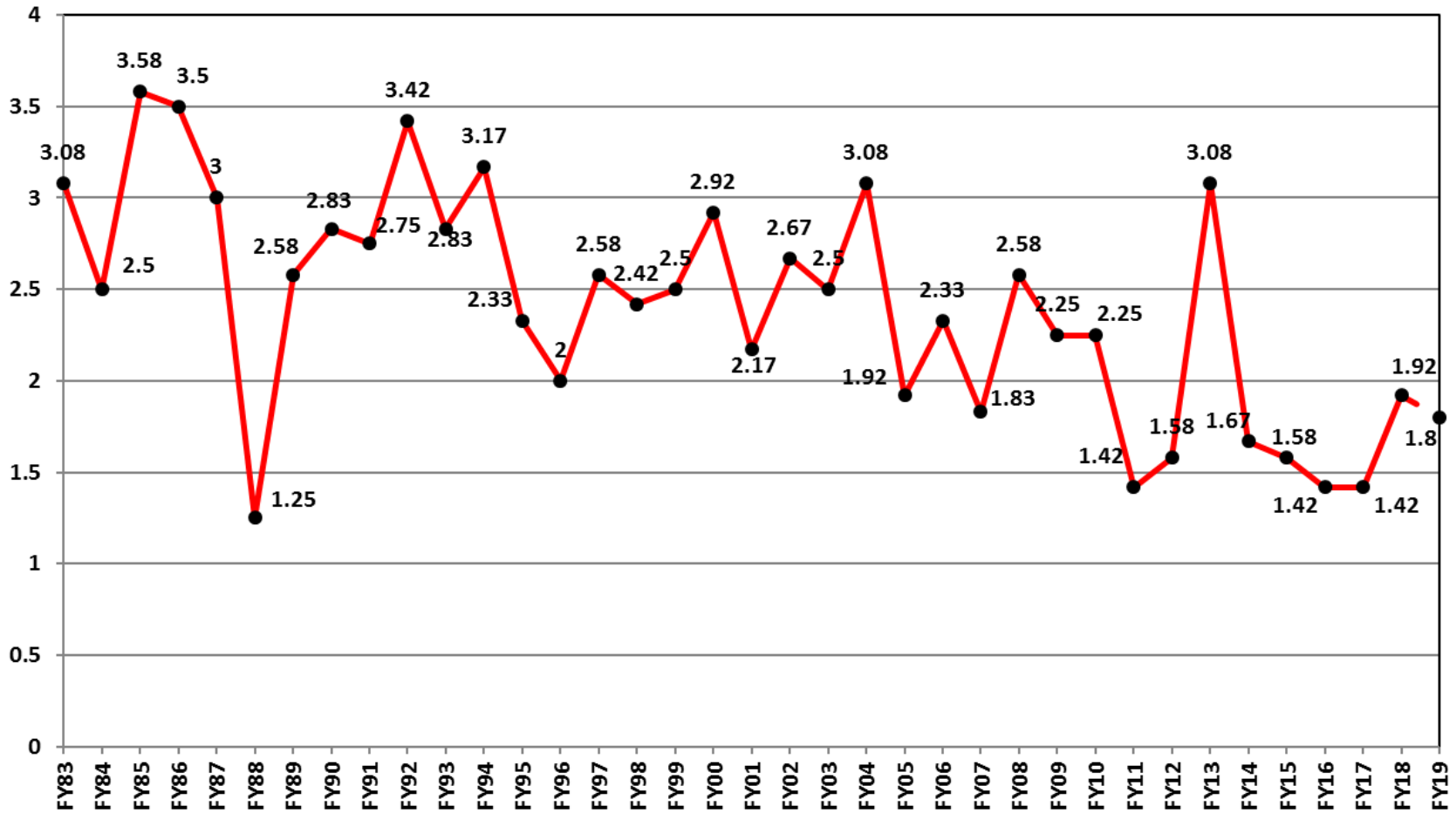
U.S. Registered Rotorcraft Cumulative Fatal Accident Count: FY17 - 19



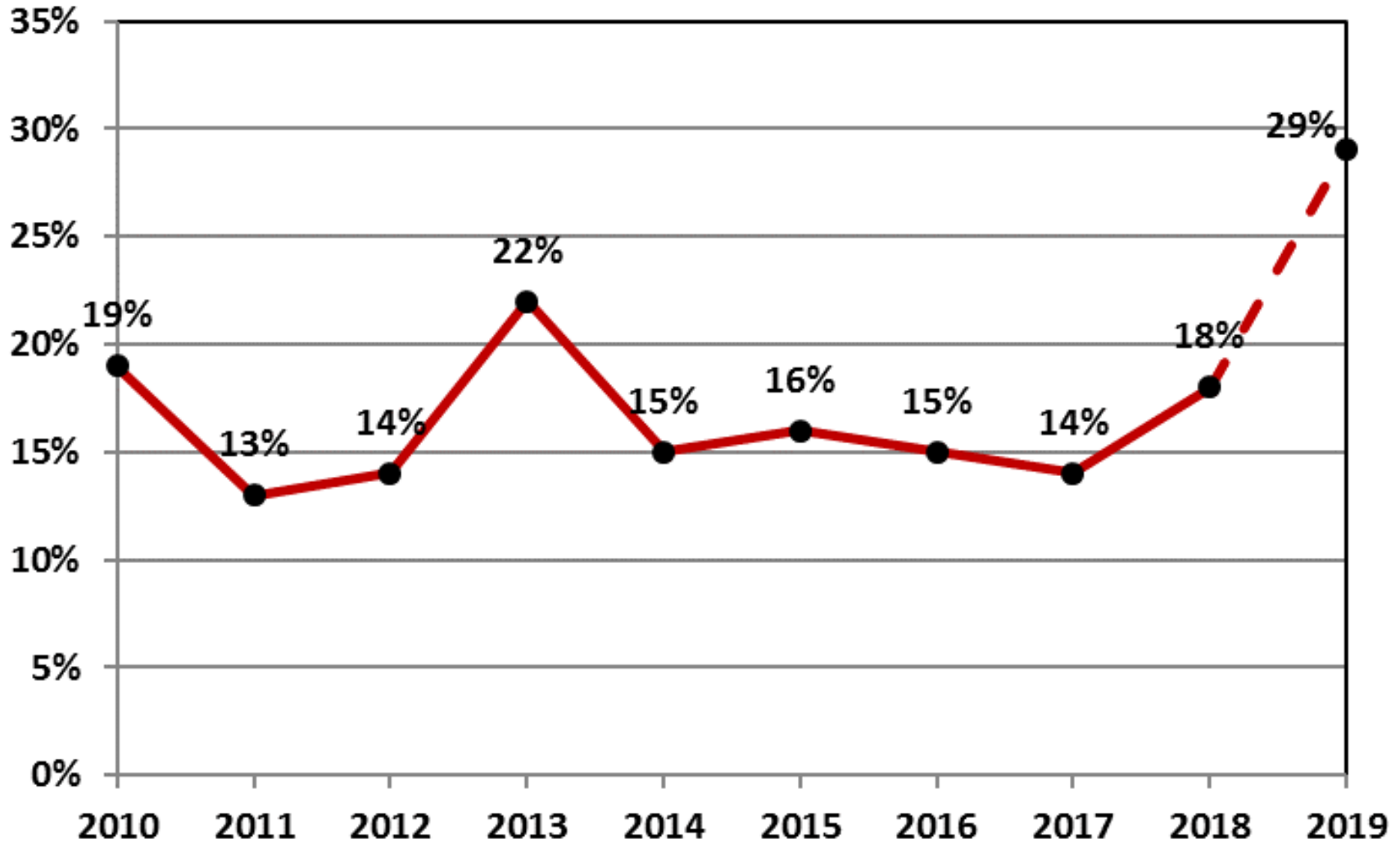
U.S. Registered Rotorcraft Cumulative Accident Count: FY17 - 19



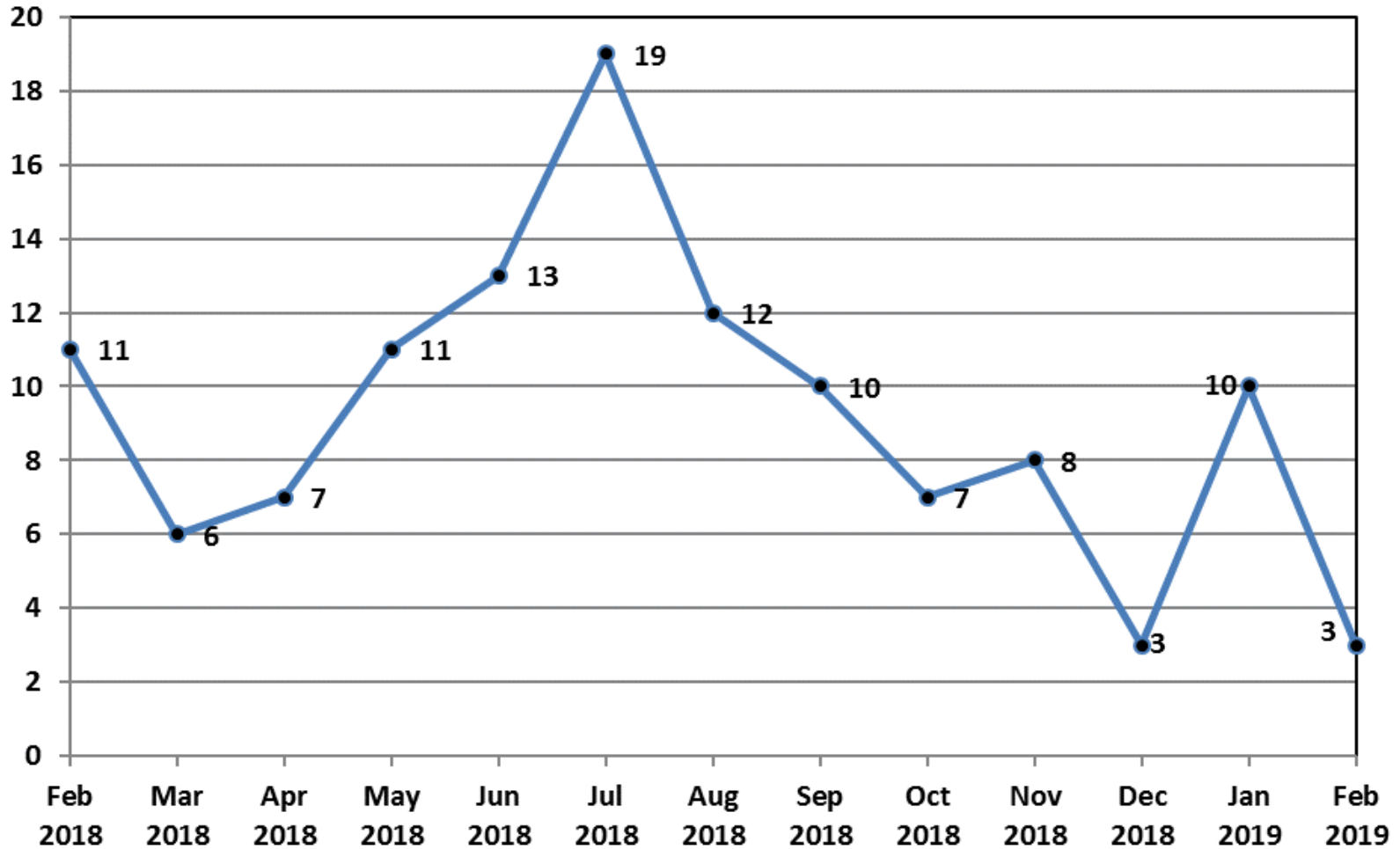
U.S. Registered Rotorcraft Average Fatal Accidents Per Month, FY83-FY19



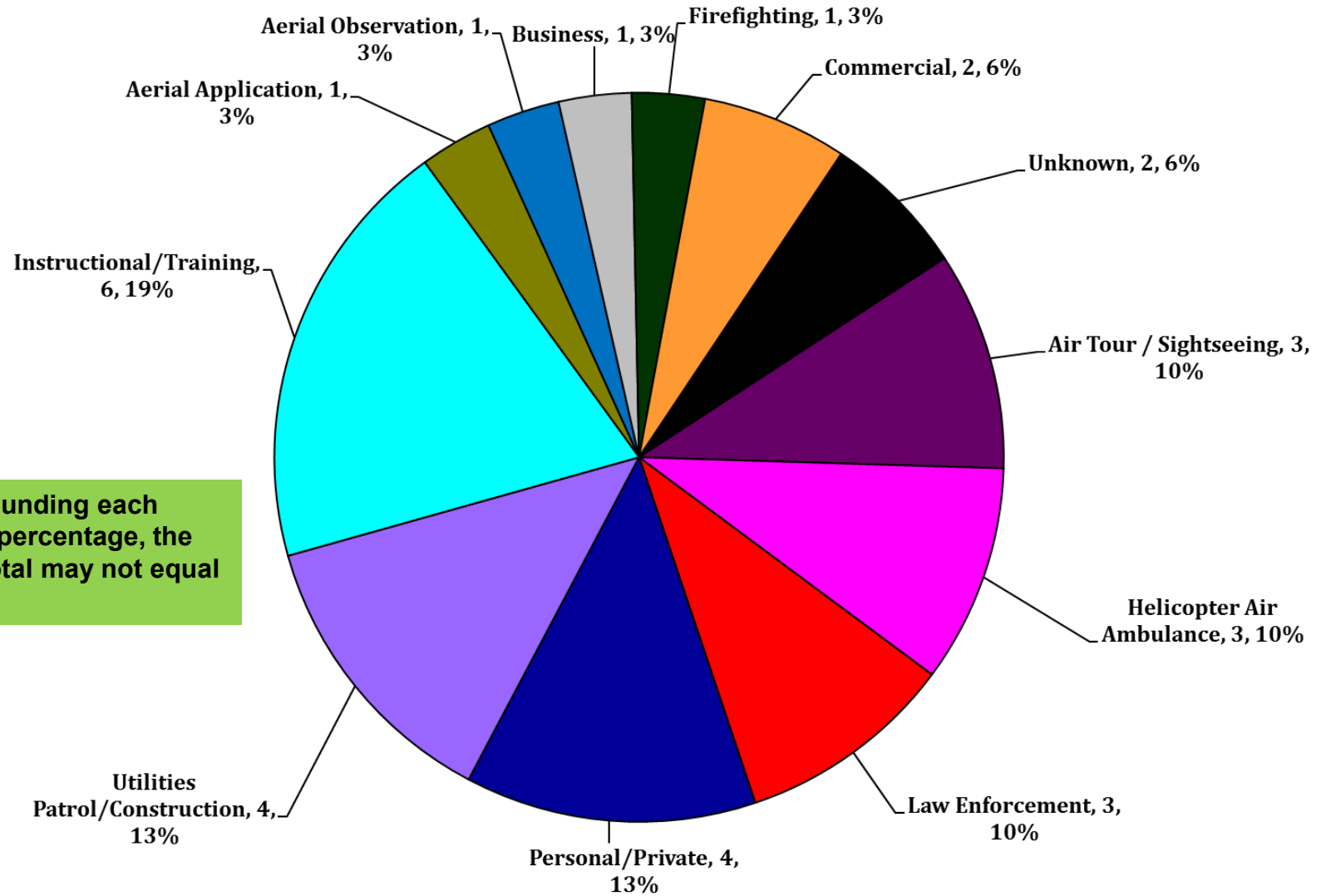
% of U.S. Rotorcraft Accidents with a Fatality (FY19, Oct-Feb)



U.S. Registered Rotorcraft 13 Month Rolling Accident Count

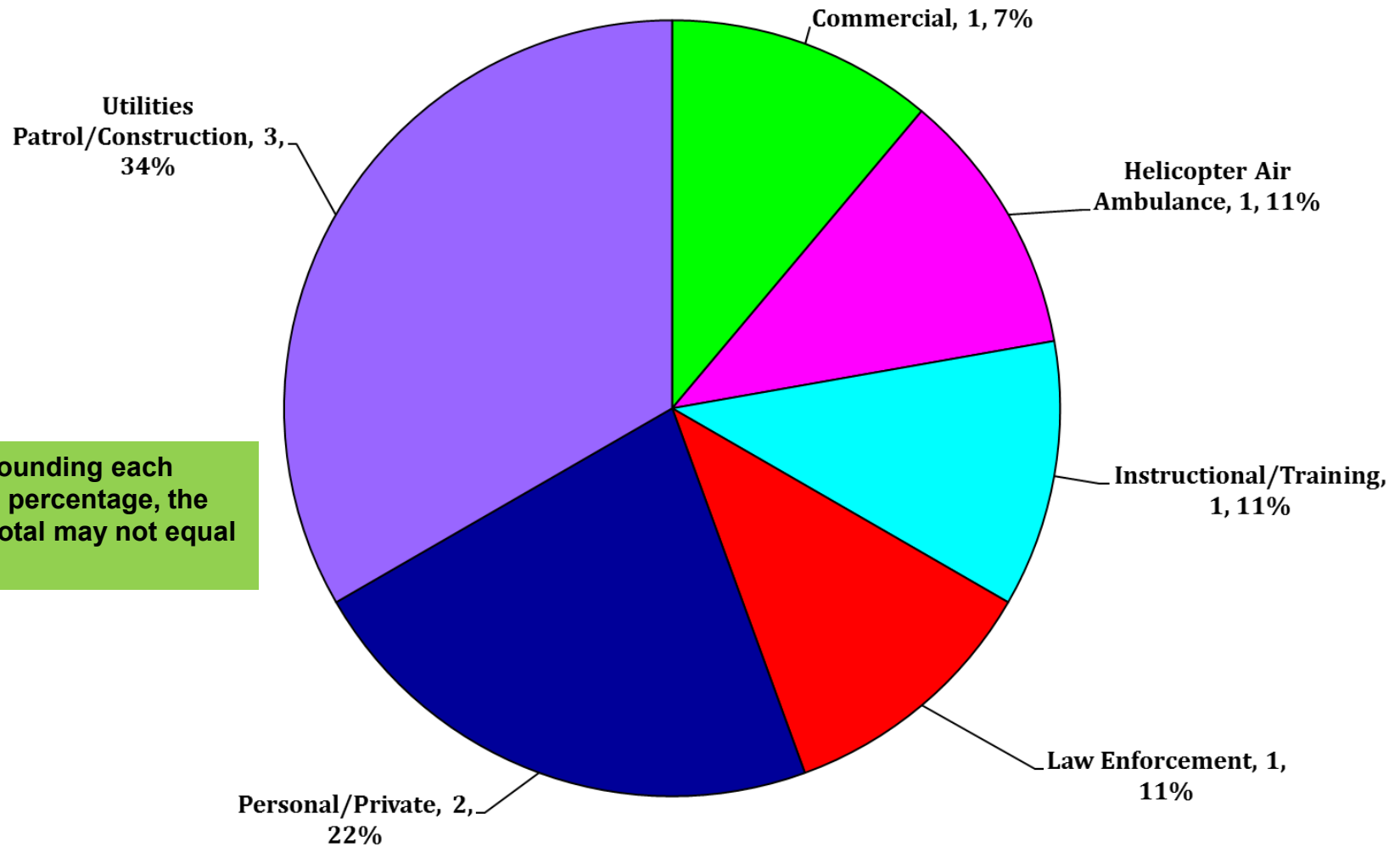


FY 19 – Total Accidents by Industry (Oct 2018 - Feb 2019)



Due to rounding each Industry percentage, the overall total may not equal 100%.

FY 19 – Total FATAL Accidents by Industry (Oct 2018 - Feb 2019)



Due to rounding each industry percentage, the overall total may not equal 100%.

FY 19 – U.S. Registered Fatal Rotorcraft Accidents

- 1-29-19 – Bell 407, N191SF, Zaleski, OH, Part 135, 3 Fatal
 - Helicopter Air Ambulance; enroute Pomeroy, OH for patient pick up
 - Crashed in heavily wooded area [NTSB: CEN19FA072](#)

- 1-24-19 – Bell 206L3, N8227J, Ashland, OR, Part 91, 1 Fatal
 - Training flight; crashed under unknown circumstances [NTSB: WPR19LA071](#)

- 11-16-18 – Bell OH-58C, N510CP, Clanton, AL, Part 91, 2 Fatal
 - Law enforcement, positioning flight from Columbus, GA to Auburn, AL
 - Struck powerlines and impacted the Coosa River [NTSB: ERA19FA047](#)

- 11-4-18 – Bell 206B, N417WT, Uvalde, TX, Part 91, 3 Fatal
 - Personal use; night flight departed private ranch en route to San Antonio
 - Collided with 1,450 foot hill about 5 miles from ranch [NTSB: CEN19FA024](#)

FY 19 – U.S. Registered Fatal Rotorcraft Accidents

- 11-2-18 – MDHI 369D, N5187S, McDougal, AR, Part 133, 1 Fatal, 2 Minor
 - Utilities Patrol/Construction; utility line work w/2 linemen attached
 - Impacted a utility pole and crashed [NTSB: CEN19FA020](#)

- 10-30-18 – Airbus Helicopter AS355F2, N372CA, Beekmantown, NY, Part 133, 2 Fatal, 2 Serious
 - Utilities Patrol/Construction; stringing fiber optic line along existing power lines
 - Contacted lines, became entangled, fire ensued [NTSB: ERA19FA035](#)

- 10-29-18 – Airbus Helicopter AS350B3, N910S, Odanah, WI, Part 91, 1 Fatal
 - Utilities Patrol/Construction; oil and gas aerial pipeline patrol
 - Crashed under unknown circumstances, post-crash fire [NTSB: CEN19FA018](#)

- 10-17-18 – Robinson R22, N923SH, Fulton, MO, Part 91, 1 Fatal
 - Instructional/Training; Solo cross country flight to Columbia, MO
 - Crashed while enroute [NTSB: CEN19FA009](#)

FY 19 – U.S. Registered Fatal Rotorcraft Accidents Occurring Outside the U.S.

- 11-22-18 – Airbus Helicopter EC120B, N124ML, La Romana, Dominican Republic, 5 Fatal
– Crashed under unknown circumstances [NTSB: ERA19WA054](#)



FY 19 - US Rotorcraft Accidents By Model

MFR	Model	Registered U.S. Fleet Size	Percentage of Total U.S. Fleet	Number of FY19 U.S. Registered Accidents	Percentage of Total FY19 U.S. Registered Accidents
Airbus Helicopters	AS350 (H125)	918	7%	4	13%
	AS355	47	< 1%	1	3%
	BK117 (H145)	203	2%	1	3%
	EC120 (H120)	95	1%	1	3%
	EC130 (H130)	247	2%		
	EC135 (H135)	311	2%		

Only models that comprise at least 1% of U.S. registered rotorcraft are listed unless an accident has occurred.

*Fleet size based on analysis of rotorcraft on FAA registry as of Apr 2018

FY 19 - US Rotorcraft Accidents By Model

MFR	Model	Registered U.S. Fleet Size	Percentage of Total U.S. Fleet	Number of FY19 U.S. Registered Accidents	Percentage of Total FY19 U.S. Registered Accidents
Bell	206Bs	1,027	8%	2	6%
	206Ls	580	5%	1	3%
	212	93	1%		
	407	722	6%	1	3%
	412	93	1%		
	429	85	1%		

Only models that comprise at least 1% of U.S. registered rotorcraft are listed unless an accident has occurred.

*Fleet size based on analysis of rotorcraft on FAA registry as of Apr 2018

FY 19 - US Rotorcraft Accidents By Model

MFR	Model	Registered U.S. Fleet Size	Percentage of Total U.S. Fleet	Number of FY19 U.S. Registered Accidents	Percentage of Total FY19 U.S. Registered Accidents
Robinson	R-22	910	7%	3	10%
	R-44	1,605	13%	8	26%
	R-66	249	2%		

Only models that comprise at least 1% of U.S. registered rotorcraft are listed unless an accident has occurred.

*Fleet size based on analysis of rotorcraft on FAA registry as of Apr 2018

FY 19 - US Rotorcraft Accidents By Model

MFR	Model	Registered U.S. Fleet Size	Percentage of Total U.S. Fleet	Number of FY19 U.S. Registered Accidents	Percentage of Total FY19 U.S. Registered Accidents
Sikorsky	S-76	244	2%		
	S-92	85	1%		

Only models that comprise at least 1% of U.S. registered rotorcraft are listed unless an accident has occurred.

*Fleet size based on analysis of rotorcraft on FAA registry as of Apr 2018

FY 19 - US Rotorcraft Accidents By Model

MFR	Model	Registered U.S. Fleet Size	Percentage of Total U.S. Fleet	Number of FY19 U.S. Registered Accidents	Percentage of Total FY19 U.S. Registered Accidents
Brantly	B-2	76	1%		
Enstrom	280	137	1%		
	480	69	1%		
	F28	164	1%	1	3%
Erickson	S-64E	28	< 1%	1	3%
Helicopteres Guimbal	Cabri G2	26	< 1%	1	3%
Hiller	UH-12/H-23	311	2%		
Leonardo (formerly Agusta Westland)	A109	174	1%		
	A119	98	1%		
	AW139	124	1%		
MDHI	369	718	6%	2	6%
Restricted Category (all TCs)	HH-1/TH-1/UH-1	572	5%		
	OH-58	442	3%	2	6%
Schweizer Rotorcraft Services Group	269/300/TH-55	557	4%		
Scott's Bell	47	628	5%	2	6%

Only models that comprise at least 1% of U.S. registered rotorcraft are listed unless an accident has occurred.

*Fleet size based on analysis of rotorcraft on FAA registry as of Apr 2018

U.S. Helicopter Safety Team (USHST) Fatal Accident Rate (through Feb 2019)

