



**Federal Aviation
Administration**

Rotorcraft Standards Branch AIR-680

Monthly Accident Briefing

July 2018

**By: AIR-682, Safety Management Section,
Rotorcraft Standards Branch**



FY 18 – U.S. Registered Rotorcraft Accidents

Cumulative Counts – 101 Accidents, 21 Fatal Accidents, 45 Fatalities

Same time period, previous FY: 98 Accidents, 13 Fatal Accidents, 20 Fatalities

	Oct	Nov	Dec	Jan	Feb	Mar	Apr	May	Jun	Jul	Aug	Sep	Total
Accidents:	8	10	4	14	11	6	7	10	13	18			101
Fatal:	3	3	0	4	1	1	2	1	3	3			21
Fatalities:	4	6	0	11	5	5	5	1	3	5			45

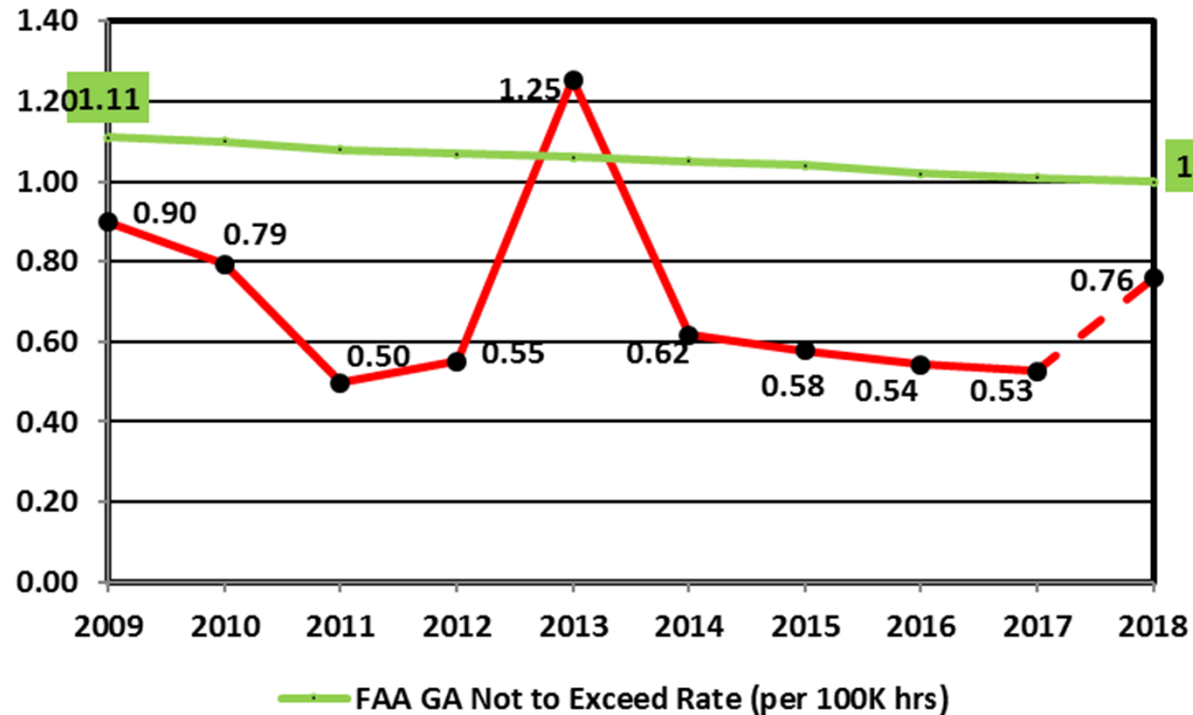
Data Source: FAA, NTSB Databases. Includes only events classified as accidents and does not include incidents. The accident numbers for each month of the Fiscal Year may vary from the previous monthly briefing based on analysis between FAA and NTSB databases for the specified month. The NTSB database may include accidents that were not reported to this office resulting in slightly different numbers.

Accident Operations Summary (Cumulative)

Acronyms: HAA = Helicopter Air Ambulance, ENG = Electronic News Gathering, GA = General Aviation, GOM = Gulf of Mexico

	HAA 91/ 135	GOM 91/ 135	Part 133	Part 135 Other	Air Tour 91/135/136	Part 137	ENG 91/ 135	GA 91	N Reg Outside U.S.
Accidents:	9	1	7	4	3	13		60	4
Fatal:	2		3	1	1	1		12	1
Fatalities:	6		5	1	5	1		25	2

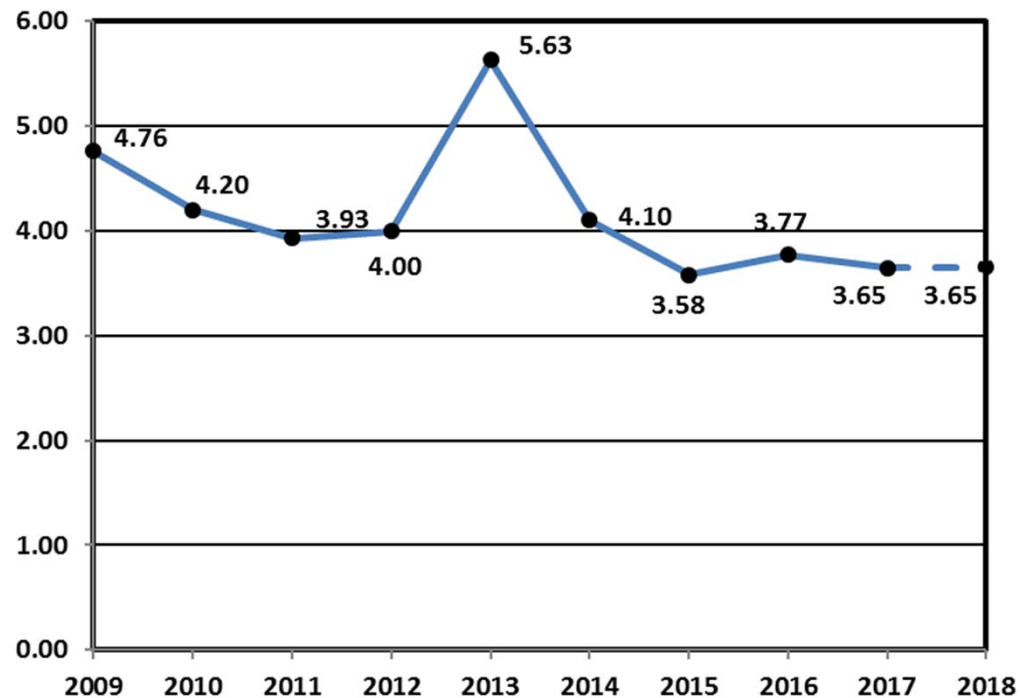
Estimated U.S. Rotorcraft FATAL Accident Rate (per 100,000 hours) – 10 Year Lookback



Rate calculation based on the following:

- 1) Accident totals compiled by AIR-682.
- 2) Historic rotorcraft flight hours extracted from General Aviation and Part 135 Activity Survey. The survey categorizes flight hours by calendar year. Assumption was that hours would be comparable if used for fiscal year calculations.
- 3) FY 11 rotorcraft flight hours and the projected hours for FY 17 and FY 18 were based on the FAA's FY2018-2038 forecast (released March 2018).

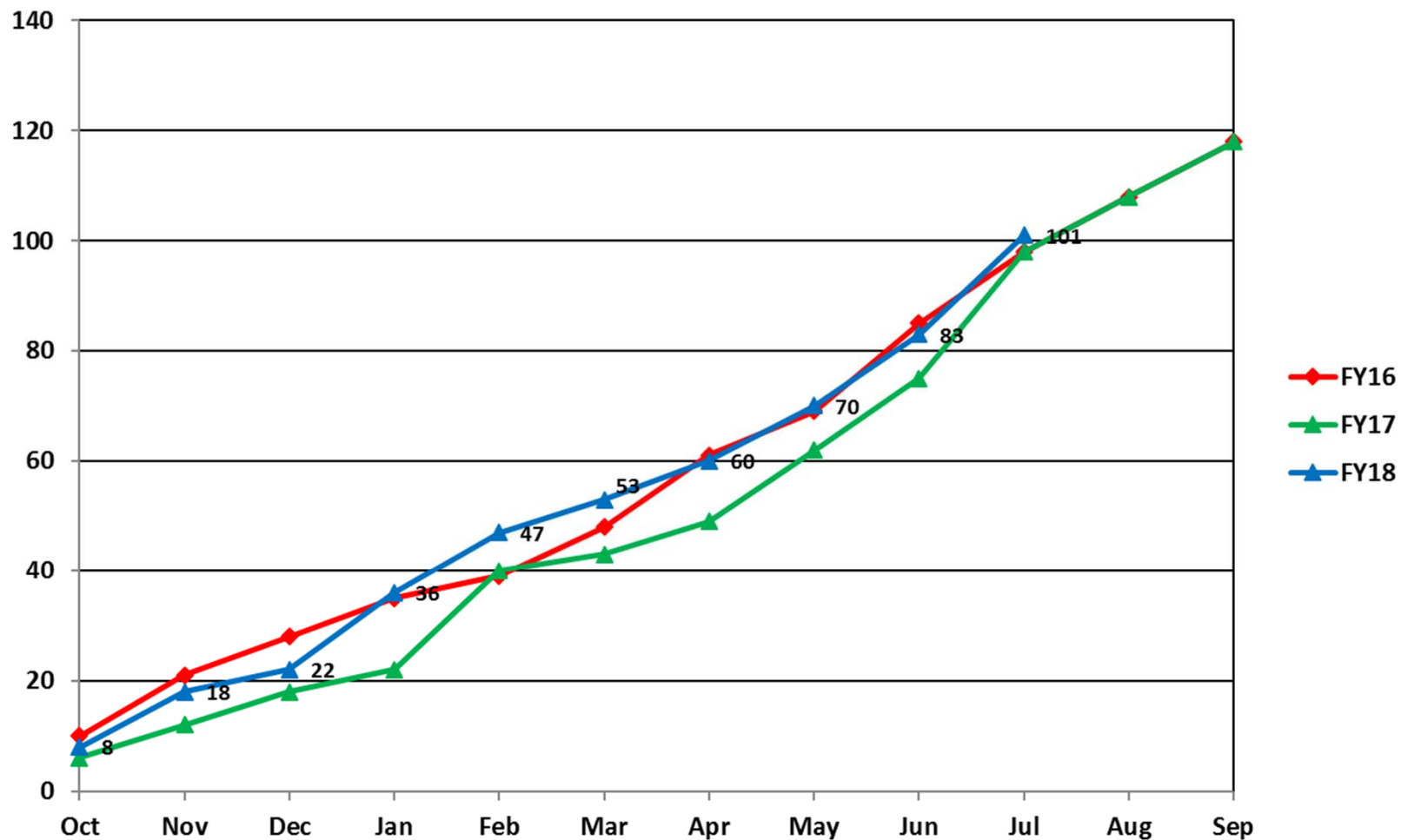
Estimated U.S. Rotorcraft Accident Rate (per 100,000 hours) – 10 Year Lookback



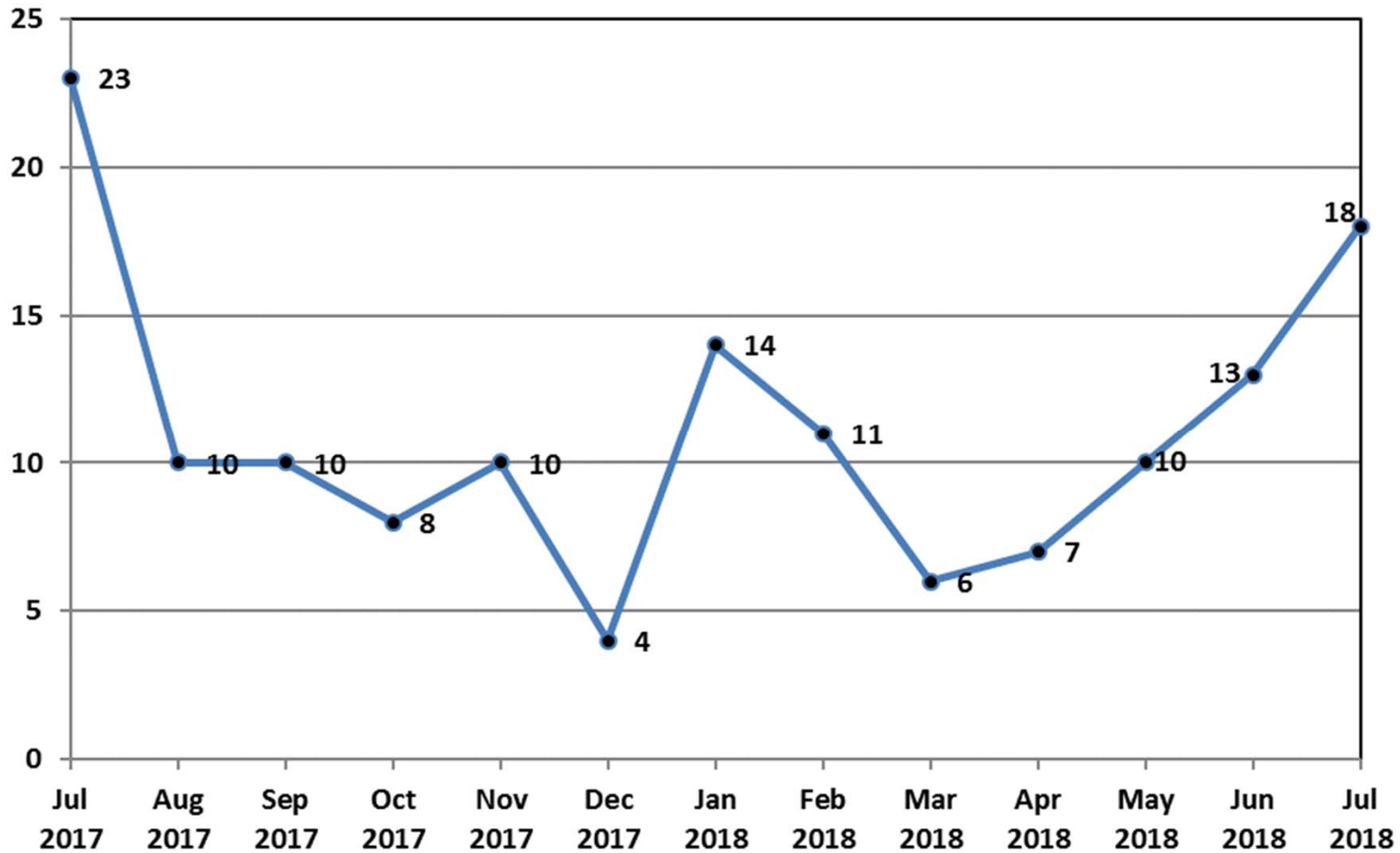
Rate calculation based on the following:

- 1) Accident totals compiled by AIR-682.
- 2) Historic rotorcraft flight hours extracted from General Aviation and Part 135 Activity Survey. The survey categorizes flight hours by calendar year. Assumption was that hours would be comparable if used for fiscal year calculations.
- 3) FY 11 rotorcraft flight hours and the projected hours for FY 17 and FY 18 were based on the FAA's FY2018-2038 forecast (released March 2018).

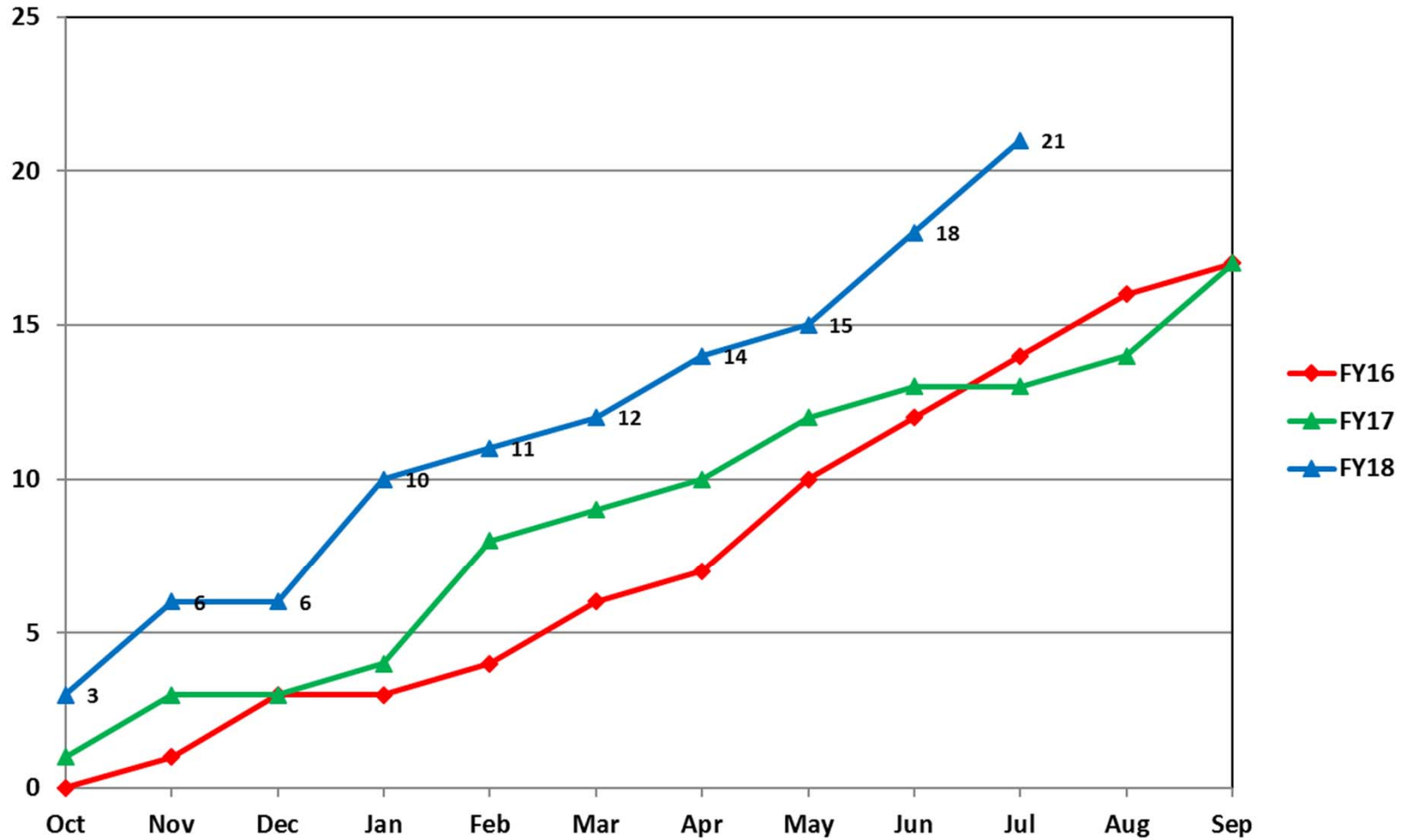
U.S. Registered Rotorcraft Cumulative Accident Count: FY16 - 18



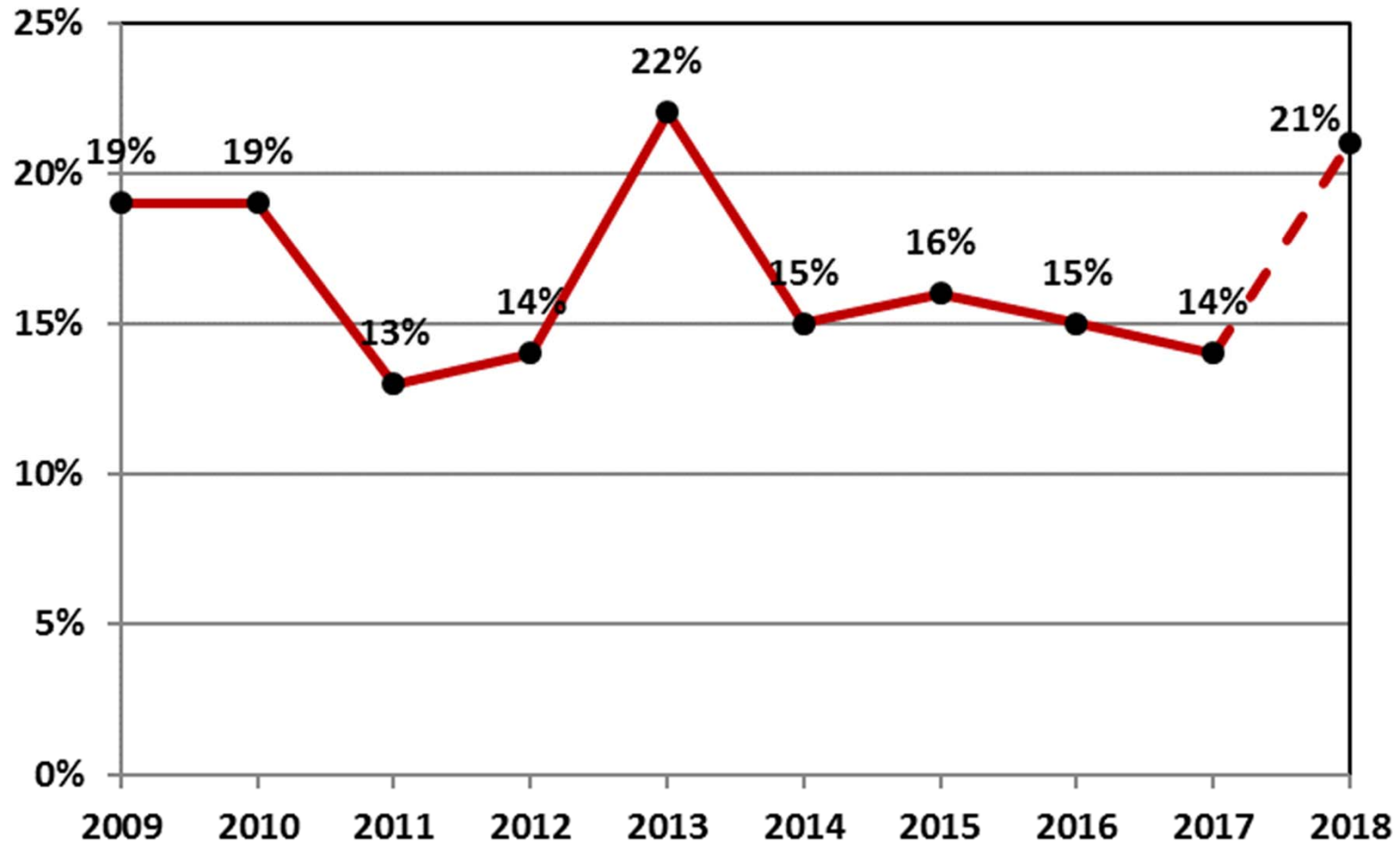
U.S. Registered Rotorcraft 13 Month Rolling Accident Count



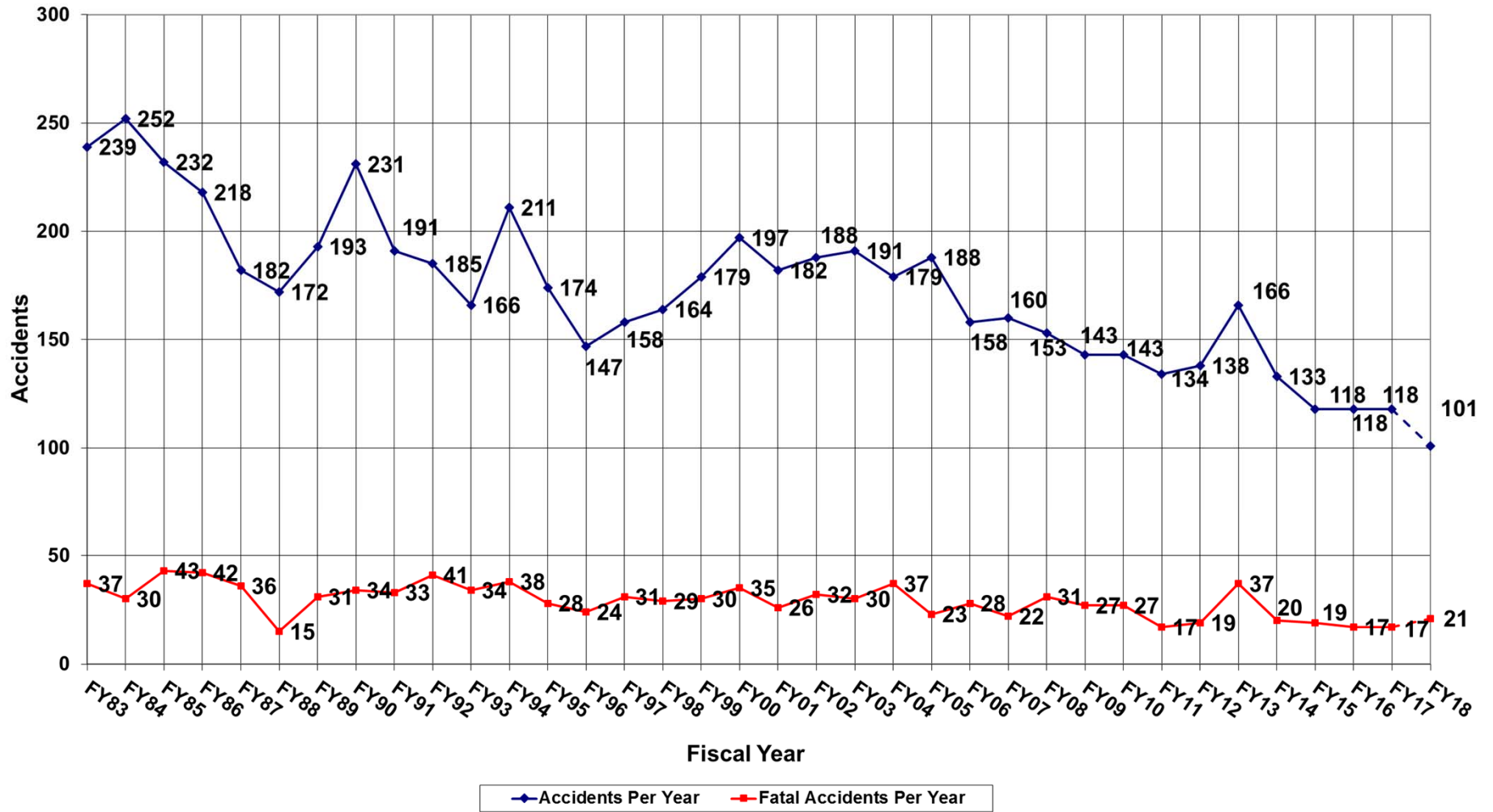
U.S. Registered Rotorcraft Cumulative Fatal Accident Count: FY16 - 18



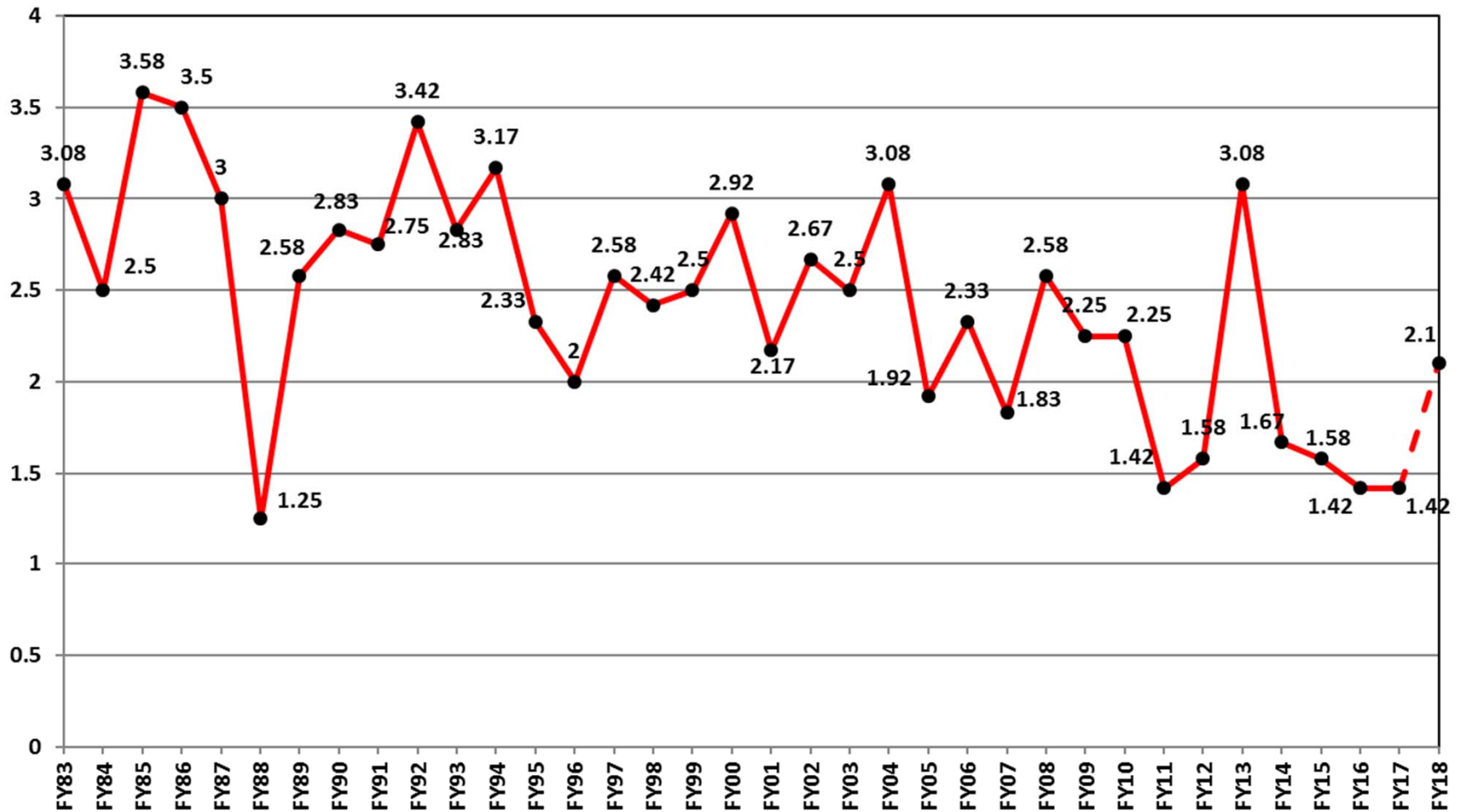
% of U.S. Rotorcraft Accidents with a Fatality (FY18, Oct-Jul)



U.S. Registered Rotorcraft Accidents FY83 - FY18



U.S. Registered Rotorcraft Average Fatal Accidents Per Month, FY83-FY18



FY 18 – U.S. Registered Fatal Rotorcraft Accidents

- 7-8-18 – Robinson R44, N616HS, Williamsburg, VA, Part 91, 2 Fatal (pilot & person in bldg.)
 - Personal/private flight; Departed Williamsburg for return to Stafford, VA
 - Crashed into 2 story condominium, 3 miles from airport [NTSB: ERA18FA187](#)

- 7-6-18 – Scott’s Bell 47G-2, Arlington, IN, Part 137, 1 Fatal
 - Aerial application flight; pilot was completing spray runs to apply fungicide to corn
 - A/c came to rest inverted; post-crash fire [NTSB: CEN18FA258](#)

FY 18 – U.S. Registered Fatal Rotorcraft Accidents

- 6-30-18 – Bell 206B, N10CV, Rio Grande, Puerto Rico, Part 91, 1 Fatal, 3 Serious
 - Personal/private; reported power loss
 - Forced landing into area of dense trees NTSB: ERA18LA183

- 6-29-18 – Robinson R-22, N787SH, Sterling City, TX, Part 91, 1 Fatal
 - Aerial Observation; attempted landing to transport trailer to conclude flight
 - About 5 feet above trailer, a/c began spinning left
 - Left spin continued, a/c climbed to 25 feet, then crashed [NTSB: CEN18FA244](#)

- 6-9-18 – Robinson R-44, N529DW, Oshkosh, WI, Part 135, 1 Fatal
 - Aerial photography flight; pilot dropped off 1 pax and departed for refuel
 - Contacted static line and fiber optic line of five-line array over the Fox River
 - Crashed in the river and sank [NTSB: CEN18FA215](#)

- 5-20-18 – MDHI 369D, N362JS, Luling, LA, Part 133, 1 Fatal, 1 Serious, 1 Minor
 - Utilities Patrol/Construction; aerial inspection and maintenance to structure
 - Collided with powerline structure and crashed [NTSB: CEN18FA182](#)

FY 18 – U.S. Registered Fatal Rotorcraft Accidents

- 4-26-18 – Airbus Helicopters AS350B2, N127LN, Hazelhurst, WI, Part 135, 3 Fatal
 - Night HAA flight returning to base near Woodruff after patient drop off
 - Crashed in wooded area 12 miles South of destination [NTSB: CEN18FA149](#)

- 4-8-18 – MDHI 600N, N602BP, Smethport, PA, Part 133, 2 Fatal, 1 Serious
 - Utilities Patrol/Construction flight to remove/resecure static line to structure
 - One lineman on skid; one passing tools from inside a/c
 - A/c struck powerline structure; descended vertically [NTSB: ERA18FA122](#)

- 3-11-18 – Airbus Helicopters AS350B2, N350LH, New York, NY, Part 91, 5 Fatal, 1 Minor
 - Aerial photography flight; reported loss of engine power
 - Ditched in East River; a/c rolled inverted in water [NTSB: ERA18MA099](#)

- 2-10-18 – Airbus Helicopters EC130B4, N155GC, Grand Canyon, AZ, Part 136, 5 Fatal, 2 Serious
 - Air tour flight; approach to land at Quartermaster LZ
 - Impacted canyon wash; post-crash fire [NTSB: WPR18FA087](#)

FY 18 – U.S. Registered Fatal Rotorcraft Accidents

- 1-30-18 – Robinson R-44, N7530R, Newport Beach, CA, Part 91, 3 Fatal, 1 Serious
 - Departed John Wayne Airport w/intended destination of Catalina Island
 - Crashed 1 mile from airport shortly after departure
 - A/c crashed in a neighborhood, impacting a house [NTSB: WPR18FA077](#)

- 1-27-18 – MDHI 369D, N369TH, Pomeroy, WA, Public Aircraft, 1 Fatal, 2 Serious
 - Mule deer capture and collar flight
 - Crashed under unknown circumstances in ravine [NTSB: WPR18FA074](#)

- 1-17-18 – Modified Bell UH-1H, N658H, Raton, NM, Part 91, 5 Fatal, 1 Serious
 - Restricted category a/c; Personal use night flight w/passengers over private ranch
 - Crashed; post-crash fire [NTSB: CEN18FA078](#)

- 1-15-18 – MDHI 369HM, N4QX, Perrysburg, OH, Part 91, 2 Fatal
 - Aerial inspection of transmission towers for Toledo Edison power grid
 - Impacted terrain 120 feet west of power lines
 - No evidence of power line or tower impact [NTSB: CEN18FA074](#)

FY 18 – U.S. Registered Fatal Rotorcraft Accidents

- 11-20-17 – Robinson R-22, N4179M, Electra, TX, Part 91, 1 Fatal
 - Business flight; low-level cattle herding
 - Observed over power lines; descended in nose low attitude
 - Post-crash fire; damaged powerlines above wreckage [NTSB: CEN18FA035](#)

- 11-19-17 – Bell 407, N620PA, Stuttgart, AR, Part 135, 3 Fatal
 - Night VMC HAA positioning flight for patient pick up
 - Wreckage located on the bank of a reservoir
 - Post-crash fire; bird carcasses located in wreckage [NTSB: CEN18FA033](#)

- 11-7-17 – MDHI 369D, N138WH, Sulphur, LA, Part 133, 2 Fatal (on long line)
 - Utilities construction; 2 linemen workers on long line installing guard ropes
 - Long line contacted shield wire between transmission towers; line severed
 - 2 linemen fatally injured after fall from ≈100 feet [NTSB: CEN18LA026](#)

FY 18 – U.S. Registered Fatal Rotorcraft Accidents

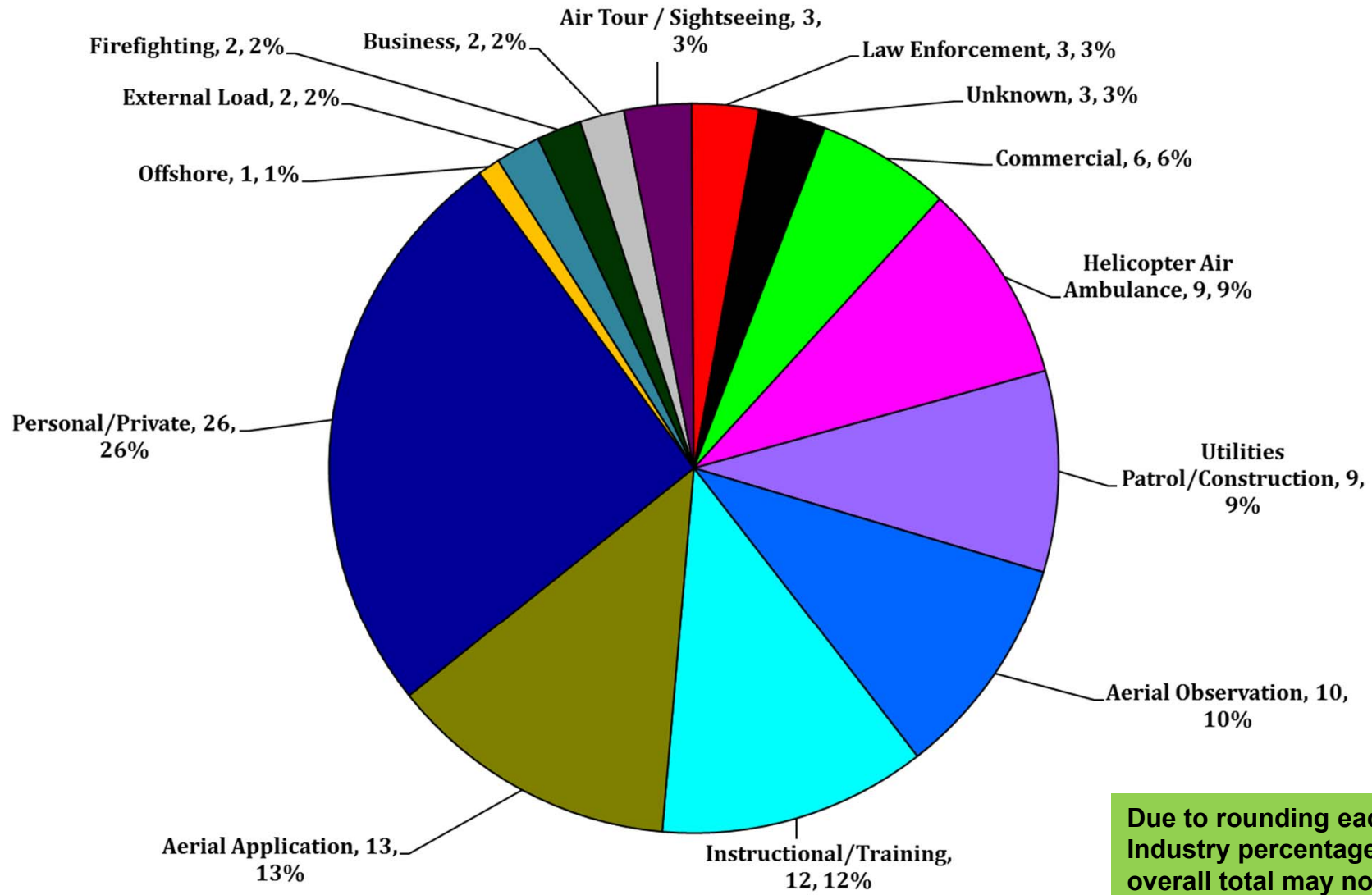
- 10-24-17 – Robinson R-22, N8537J, Arlington, WA, Part 91, 1 Fatal, 1 Minor
- Personal flight; departed residence then proceeded over nearby lake
 - Witness observed a/c flying 5 feet above the lake, then skids contacted water
 - Crashed in the lake and sank in 31 feet of water [NTSB: WPR18FA016](#)
- 10-16-17 – Robinson R-44, N820DF, Molokai, HI, Part 91, 2 Fatal
- Instructional flight; Practice instrument procedures
 - Had completed missed approach and received clearance to PHNL from ATC
 - Impacted water; CFI and pilot missing, presumed fatal [NTSB: WPR18LA010](#)
- 10-1-17 – Brantly B-2B, N2284U, Midland, MI, Part 91, 1 Fatal, 1 Minor
- Personal flight; landed in a field to attend a family gathering
 - Crashed after departing field for local flight [NTSB: CEN18FA001](#)

FY 18 – U.S. Registered Fatal Rotorcraft Accidents Outside the U.S.

- 7-4-18 – MDHI 369D, N8648F, Marshall Islands (offshore), Part 91, 2 Fatal
– Aerial Observation flight; Departed fishing boat for fish spotting
– Impacted water shortly after takeoff from boat [NTSB: WPR18LA188](#)



FY 18 – Total Accidents by Industry (Oct 2017 - July 2018)



Due to rounding each industry percentage, the overall total may not equal 100%.