



Federal Aviation  
Administration

# Rotorcraft Directorate ASW-100

## Monthly Accident Briefing

June 2015

By: ASW-112, Safety Management Group



# FY 15 – U.S. Registered Rotorcraft Accidents

## Cumulative Counts – 68 Accidents, 15 Fatal Accidents, 25 Fatalities

Same time period, previous FY: 84 Accidents, 13 Fatal Accidents, 21 Fatalities

	Oct	Nov	Dec	Jan	Feb	Mar	Apr	May	Jun	Jul	Aug	Sep	Total
<b>Accidents:</b>	11	4	7	5	8	11	4	11	7				68
<b>Fatal:</b>	2	0	3	2	0	4	2	1	1				15
<b>Fatalities:</b>	6	0	5	3	0	7	2	1	1				25

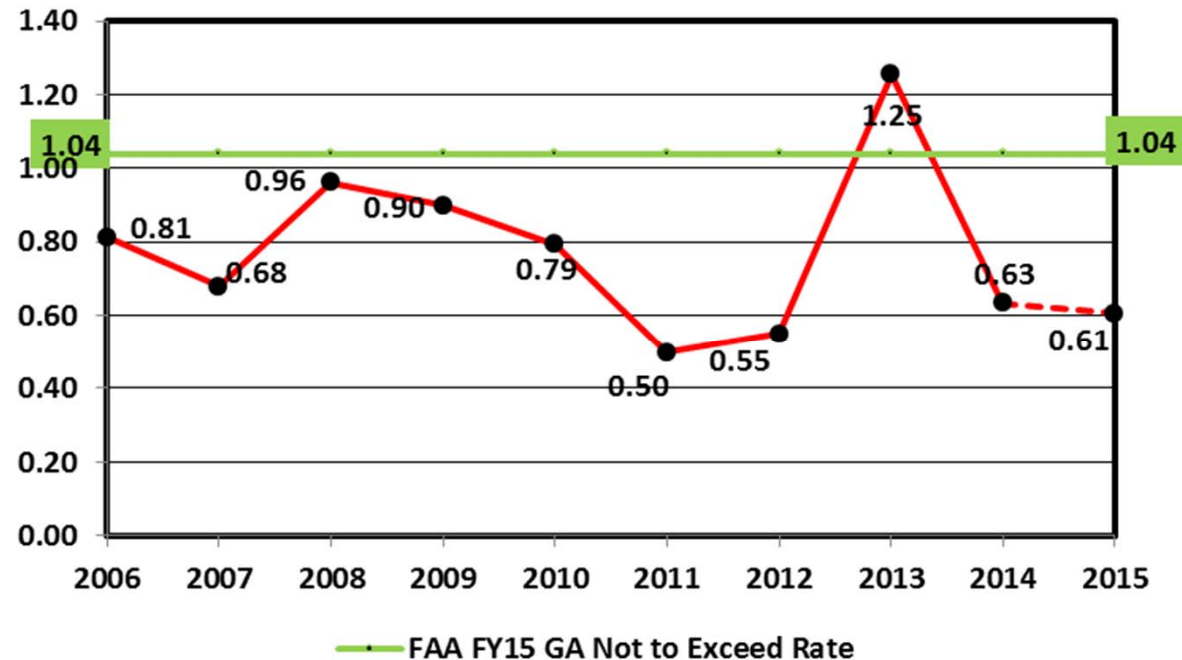
Data Source: FAA, NTSB Databases. Includes only events classified as accidents and does not include incidents. The accident numbers for each month of the Fiscal Year may vary from the previous monthly briefing based on analysis between FAA and NTSB databases for the specified month. The NTSB database may include accidents that were not reported to this office resulting in slightly different numbers.

## Accident Operations Summary (Cumulative)

**Acronyms:** HAA = Helicopter Air Ambulance, ENG = Electronic News Gathering, GA = General Aviation, GOM = Gulf of Mexico

	HAA 91/ 135	GOM 91/ 135	Part 133	Part 135 Other	Air Tour 91/135/136	Part 137	ENG 91/ 135	GA 91	N Reg Outside U.S.
<b>Accidents:</b>	7	3	2	1	1	8		46	
<b>Fatal:</b>	4	0	0	0	0	2		9	
<b>Fatalities:</b>	6	0	0	0	0	2		17	

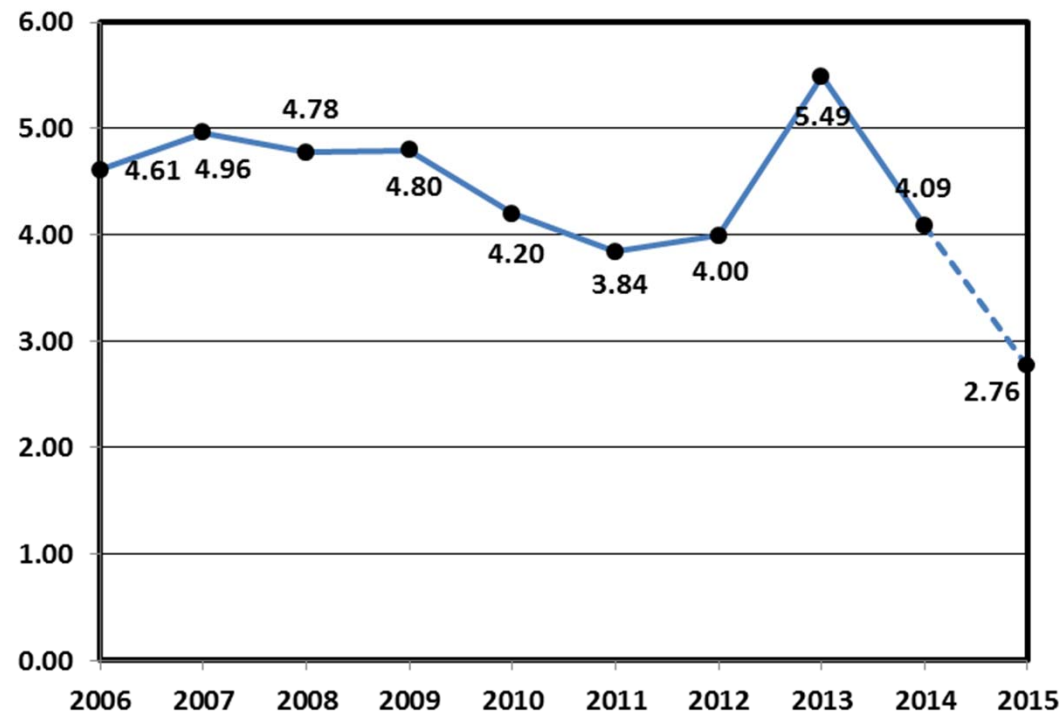
# Estimated Rotorcraft FATAL Accident Rate (per 100,000 hours) – 10 Year Lookback, FY15 YTD



## Rate calculation based on the following:

- 1) Accident totals compiled by ASW-112.
- 2) Historic rotorcraft flight hours extracted from General Aviation and Part 135 Activity Survey. The survey categorizes flight hours by calendar year. Assumption was that hours would be comparable if used for fiscal year calculations.
- 3) FYs 11 & 14 rotorcraft flight hours and the projected hours for FY 15 were based on the FAA's FY2015-2035 forecast.
- 4) FY14 and FY15 hours were updated when the FAA's most recent forecast (FY2015-2035) was released in March 2015.
- 5) FY 15 rotorcraft flight hours to date were based on a sample of reported monthly hours distribution provided by various industry sectors.

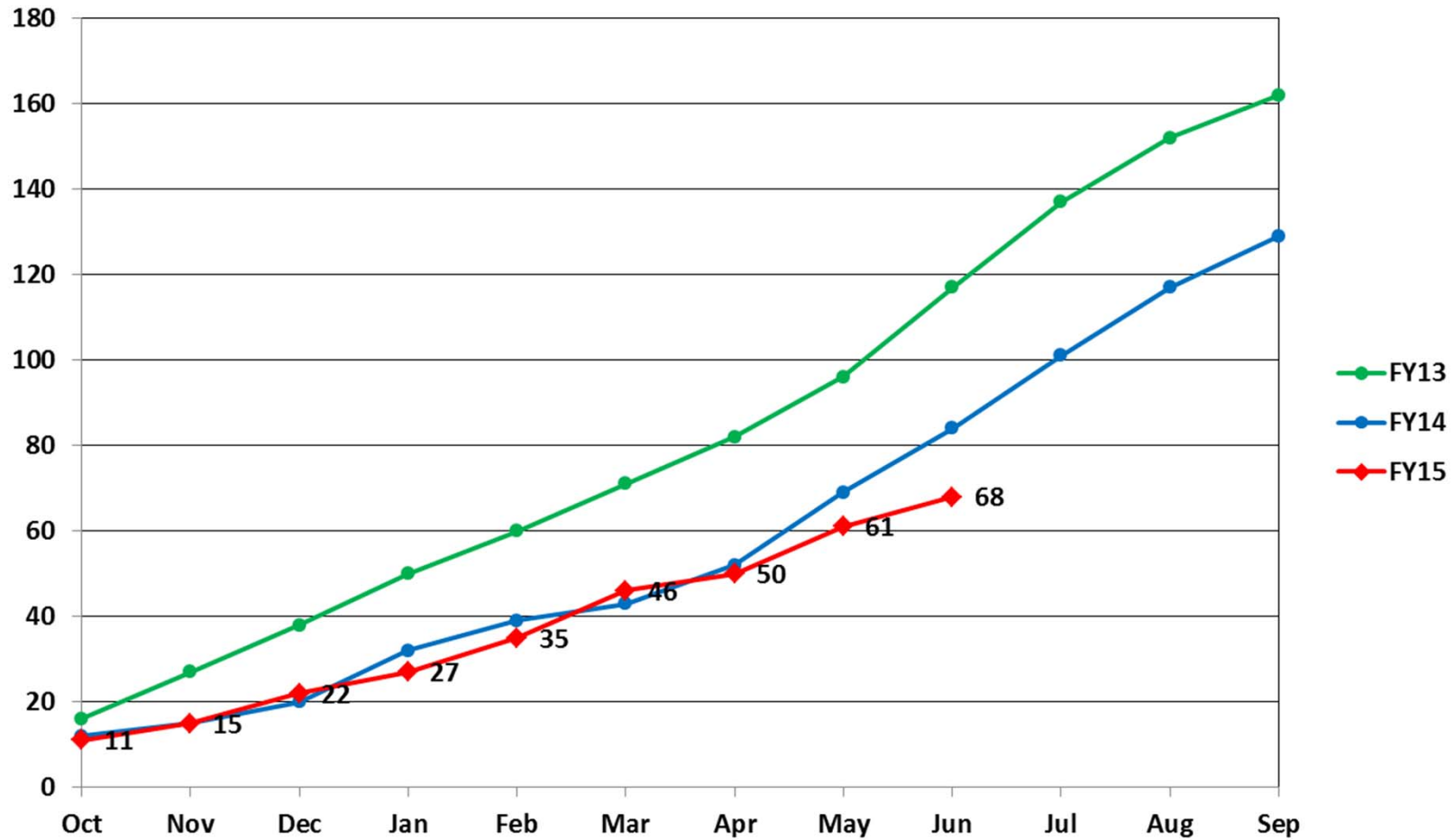
# Estimated Rotorcraft Accident Rate (per 100,000 hours) – 10 Year Lookback, FY15 YTD



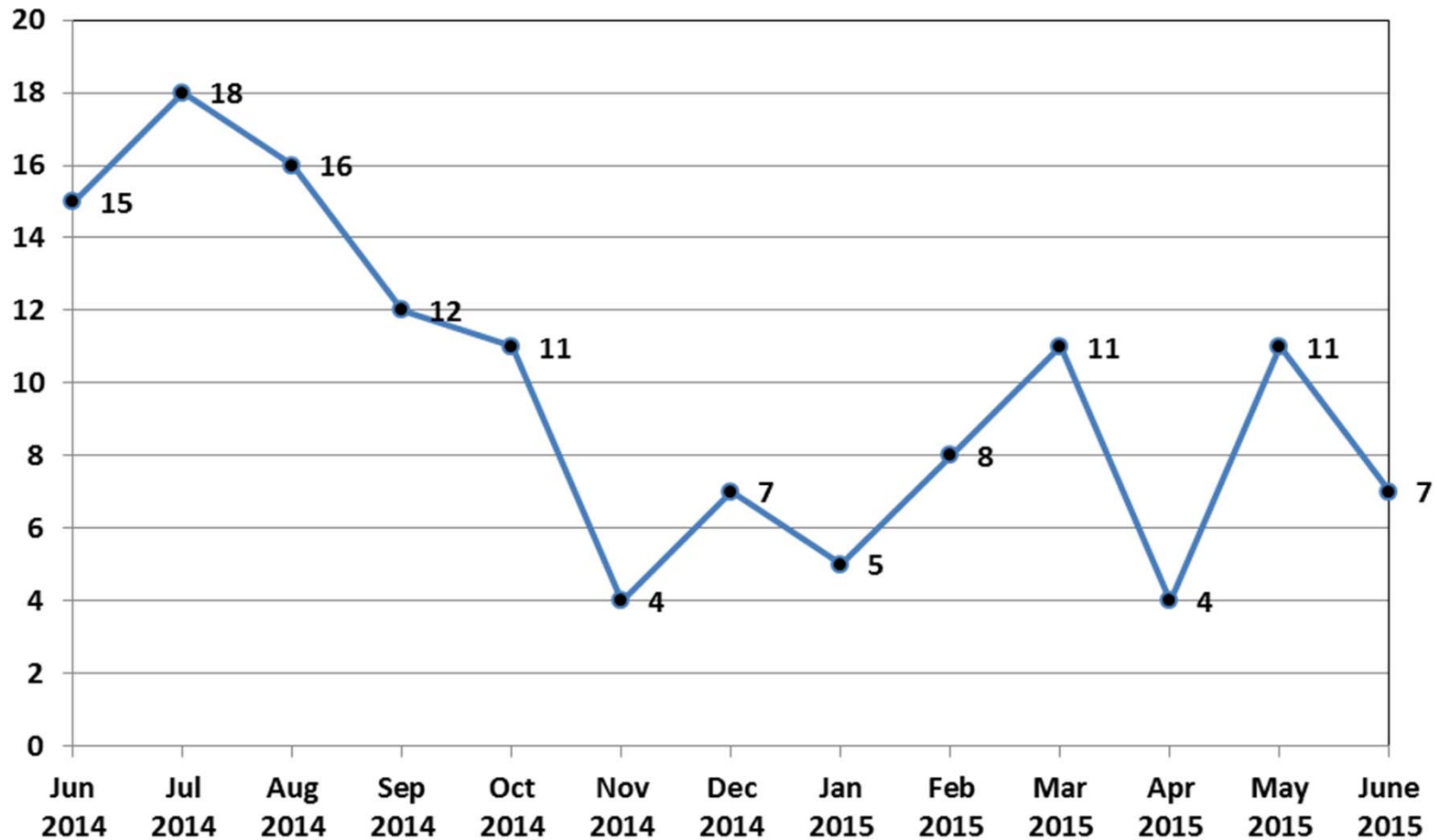
## Rate calculation based on the following:

- 1) Accident totals compiled by ASW-112.
- 2) Historic rotorcraft flight hours extracted from General Aviation and Part 135 Activity Survey. The survey categorizes flight hours by calendar year. Assumption was that hours would be comparable if used for fiscal year calculations.
- 3) FYs 11 & 14 rotorcraft flight hours and the projected hours for FY 15 were based on the FAA's FY2015-2035 forecast.
- 4) FY14 and FY15 hours were updated when the FAA's most recent forecast (FY2015-2035) was released in March 2015.
- 5) FY 15 rotorcraft flight hours to date were based on a sample of reported monthly hours distribution provided by various industry sectors.

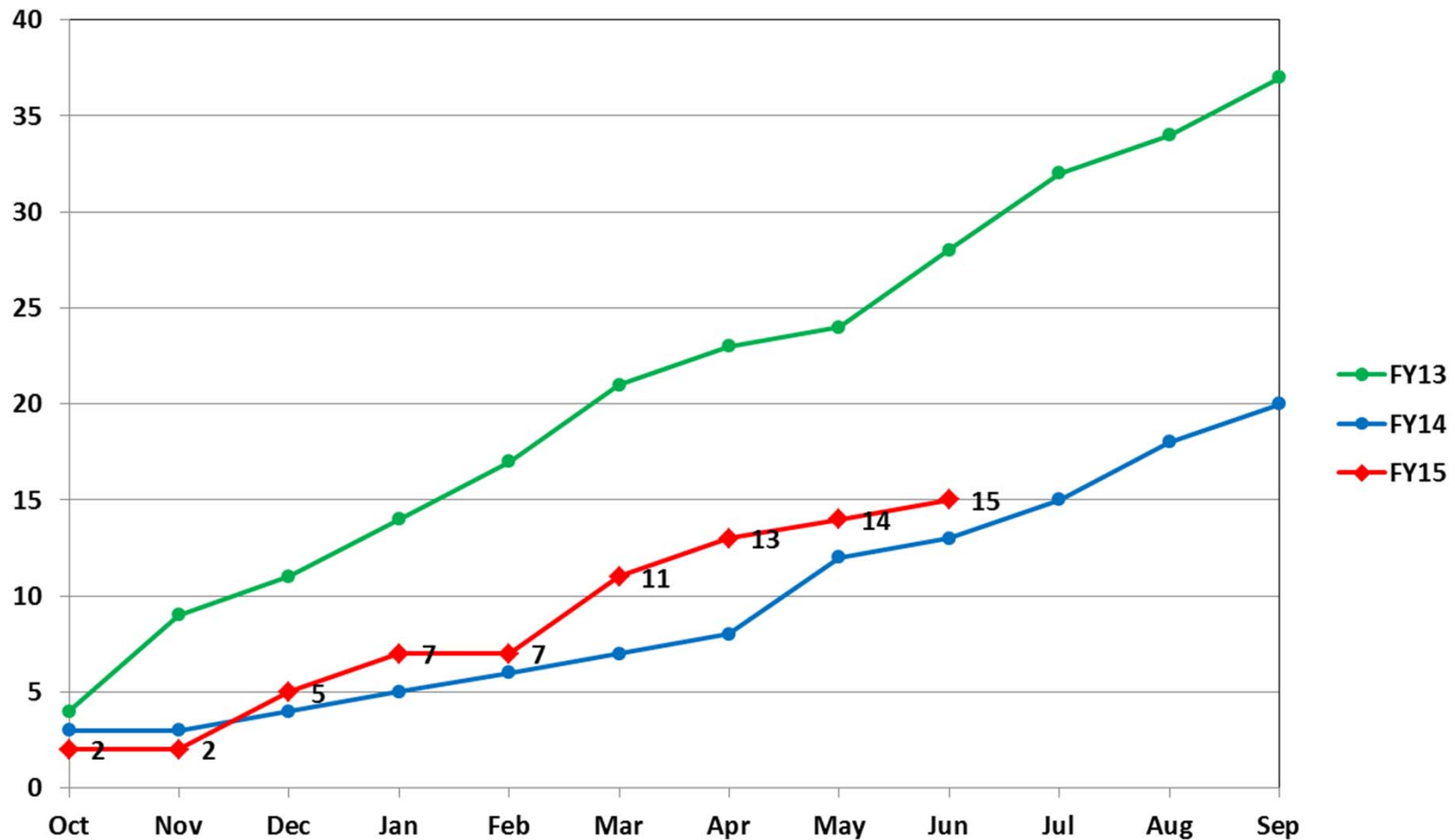
# U.S. Registered Rotorcraft Cumulative Accident Count: FY13 - 15



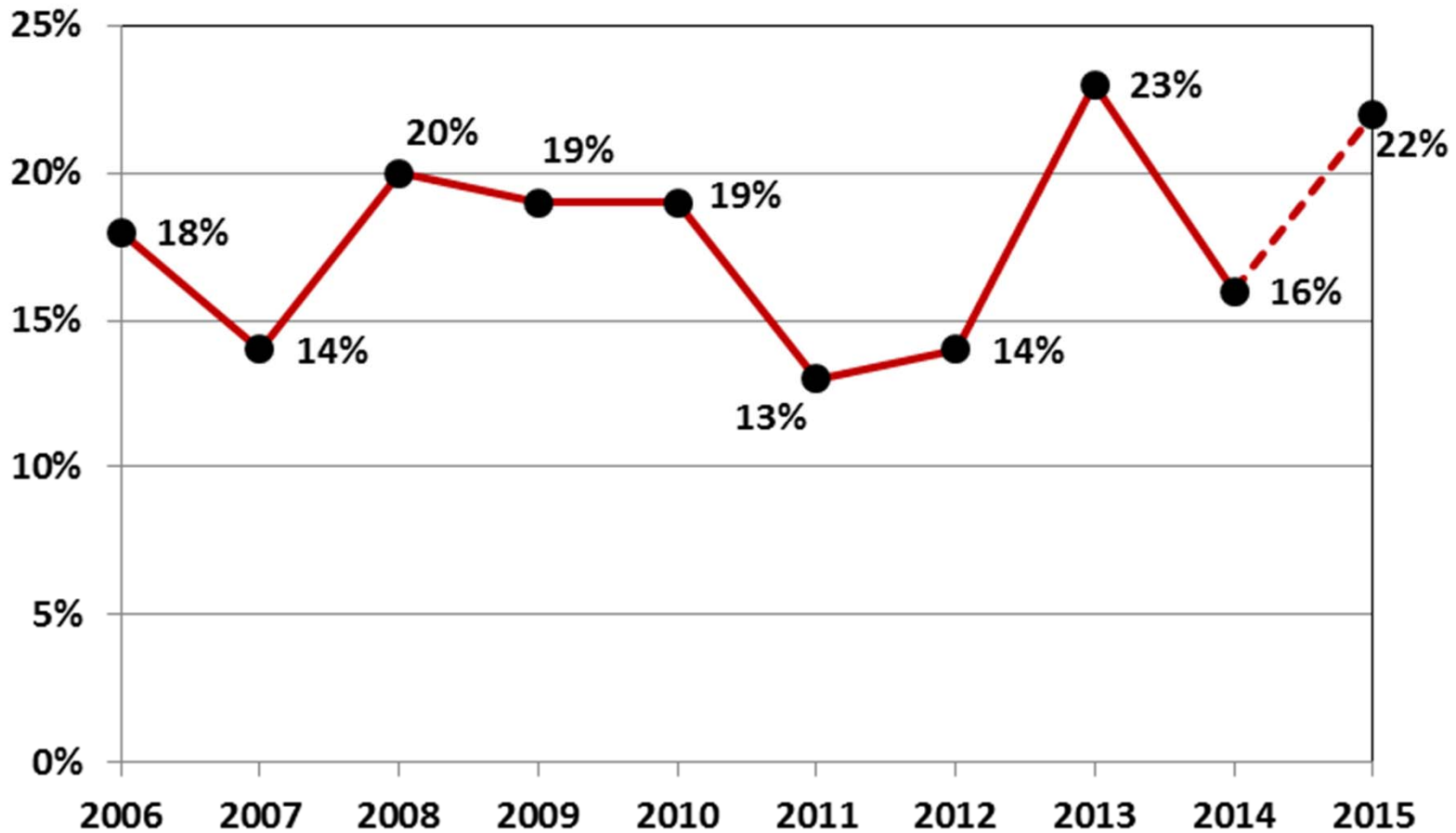
# U.S. Registered Rotorcraft 13 Month Rolling Accident Count



# U.S. Registered Rotorcraft Cumulative Fatal Accident Count: FY13 - 15



# % of Rotorcraft Accidents with a Fatality (FY15, Oct-Jun Only)





## FY 15 – U.S. Registered Fatal Rotorcraft Accidents

- 6-20-15 – Scott’s Bell 47G-5, N4427F, Salinas, CA, Part 137, 1 Fatal
  - Aerial application flight had refilled fertilizer tank for last spray run of morning
  - Departed staging area into fog/reduced visibility and did not return
  - Ground crew drove to field and found crash wreckage [NTSB: WPR15LA193](#)
  
- 5-27-15 – Hiller UH-12E, N138HA, Wasco, CA, Part 137, 1 Fatal
  - Aerial Application flight; a/c departed refueling area to empty hopper
  - Crashed for unknown reasons shortly after takeoff [NTSB: WPR15LA168](#)
  
- 4-27-15 – Airbus Helicopter BK117C-2, N392TC, Austin, TX, Part 91, 1 Fatal
  - Public Aircraft, hoist rescue operation, rescuer (crewmember) fell from hoist
  - ASW-112 assisted with investigation [NTSB: CEN15FA210](#)
  
- 4-6-15 – MDHI 369D, N555JC, Florence, AL, Part 91, 1 Fatal
  - Crashed into Tennessee River, unknown circumstances [NTSB: ERA15FA178](#)

***Data used may contain deliberative information that is not releasable outside the FAA***



## FY 15 – U.S. Registered Fatal Rotorcraft Accidents

- 3-30-15 – Bell 206L-1, N50KH, Saucier, MS, Part 91, 1 Fatal
  - Public Aircraft, U.S. Forestry Service, conducting controlled burning
  - Crashed under unknown circumstances [NTSB: ERA15FA173](#)
  
- 3-22-15 – Robinson R-44, N30242, Orlando, Part 91, 3 Fatal
  - Personal/private, departed from ORL, then notified tower they needed to return
  - Crashed under unknown circumstances into a house [NTSB: ERA15FA164](#)
  
- 3-12-15 – Airbus Helicopters AS350B2, N919EM, Eufala, OK, Part 91, 1 Fatal
  - Night Helicopter Air Ambulance positioning flight to base after patient drop off
  - Low ceiling/visibility, crashed into rising terrain [NTSB: CEN15FA171](#)
  
- 3-6-15 – Airbus Helicopters EC-130B4, N356AM, St. Louis, MO, Part 91, 1 Fatal
  - Helicopter Air Ambulance, positioning to pick up crew at hospital heliport
  - Loss of control, struck side of building, post-crash fire [NTSB: CEN15FA164](#)

***Data used may contain deliberative information that is not releasable outside the FAA***

## FY 15 – U.S. Registered Fatal Rotorcraft Accidents

- 1-25-15 – Enstrom 280FX, N86235, Erie, CO, Part 91, 2 Fatal
  - Instructional/training, main rotor blade departed during approach
  - Impact adjacent to runway, post-crash fire
  - ASW-112 assisted with investigation [NTSB: CEN15FA126](#)
  
- 1-10-15 – Robinson R-22, N348VH, Cantano, Puerto Rico, Part 91, 1 Fatal
  - Instructional/training – Solo, impacted ½ mile prior to runway
  - Crashed in San Juan Bay, a/c submerged [NTSB: ERA15FA096](#)
  
- 12-31-14 – Bell 206L-4, N57AW, Benson, AZ, Part 91, 2 Fatal
  - Business, VFR positioning flight at dusk
  - Low clouds and fog in area at time of accident [NTSB: WPR15FA072](#)

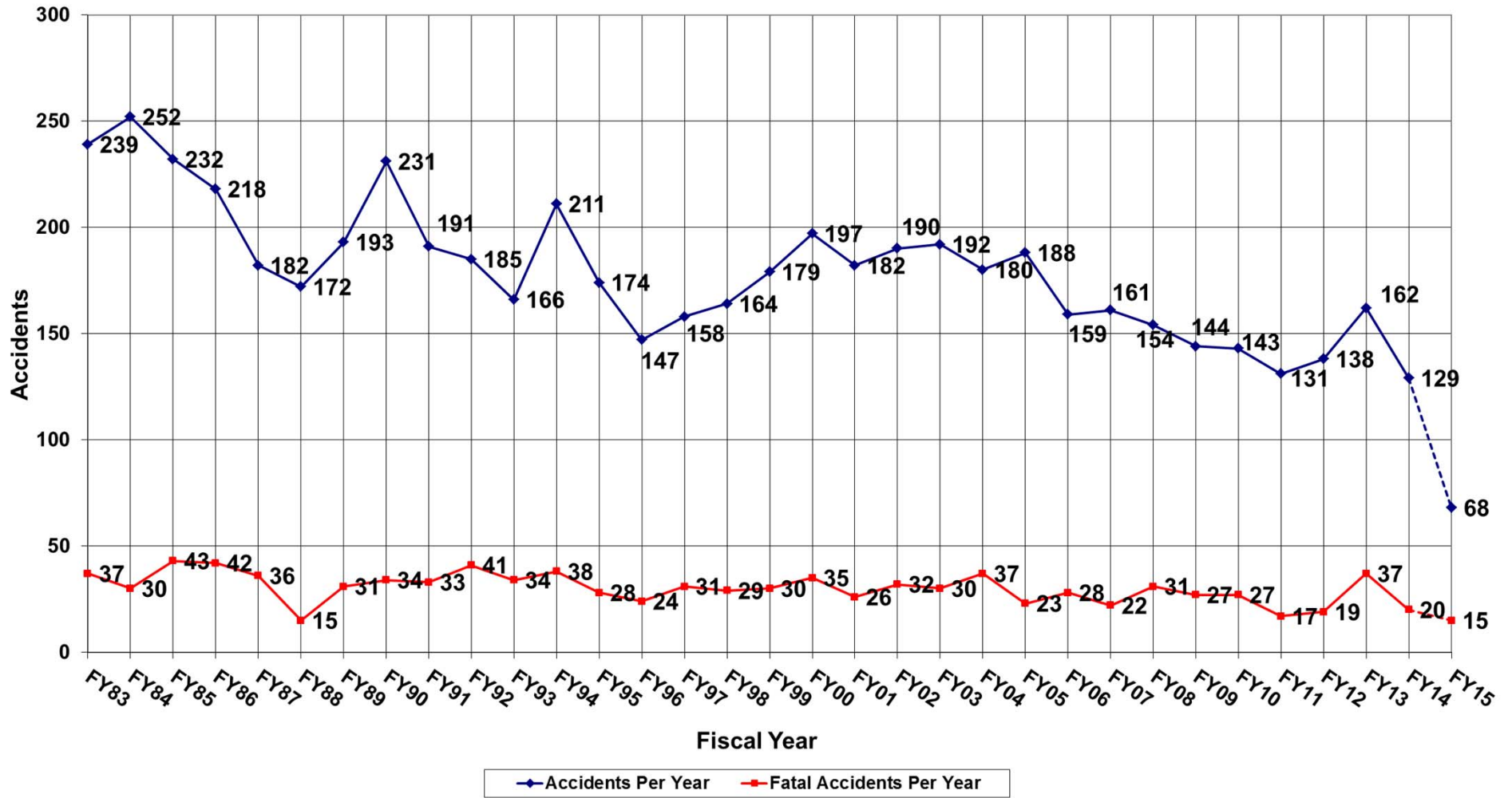
***Data used may contain deliberative information that is not releasable outside the FAA***

## FY 15 – U.S. Registered Fatal Rotorcraft Accidents

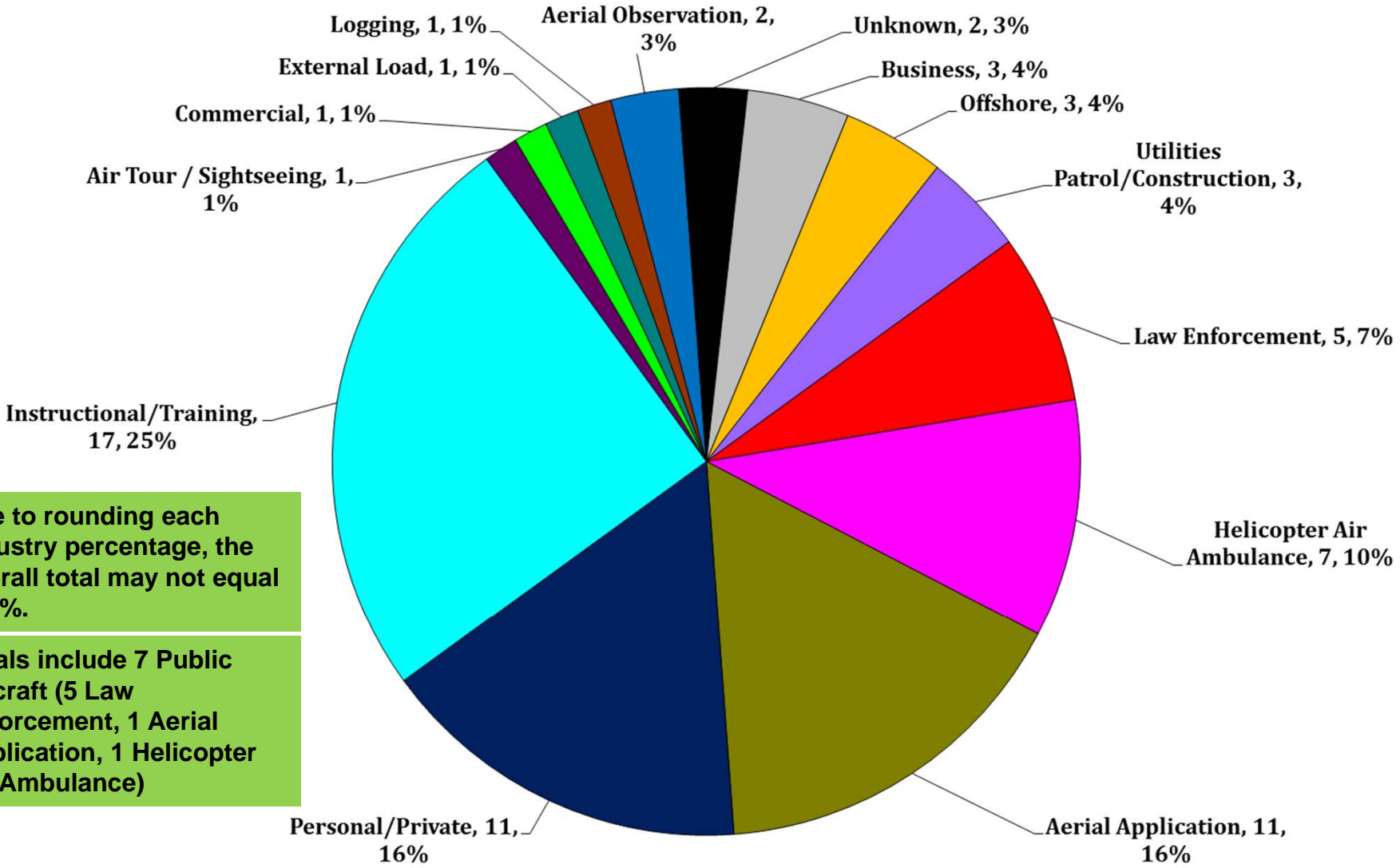
- 12-29-14 – Robinson R-22, N771MM, Lake Worth, FL, Part 91, 1 Fatal
  - Instructional/training flight, simulated engine failure
  - Crashed in grass near Palm Beach County Park Airport [NTSB: ERA15FA08](#)
  
- 12-2-14 – Robinson R-44, N3234U, Bountiful, UT, Part 91, 2 Fatal
  - Post maintenance check flight for track and balance of main rotor blades
  - Witnesses report in-flight break up followed by impact [NTSB: WPR15FA051](#)
  
- 10-23-14 – Robinson R-44, N7518Q, Frederick, MD, Part 91, 3 Fatal
  - Personal/Private flight near Frederick Municipal Airport
  - Collided with an SR22 on approach to Runway 30 [NTSB: ERA15FA025B](#)
  
- 10-4-14 – Bell 206L-1, N335AE, Wichita Falls, TX, Part 135, 3 Fatal
  - Night Helicopter Air Ambulance flight, transporting patient
  - Crashed during approach to helipad at destination, post crash fire
  - ASW-112 assisted with investigation [NTSB: CEN15FA003](#)

***Data used may contain deliberative information that is not releasable outside the FAA***

# U.S. Registered Rotorcraft Accidents FY83 - FY15



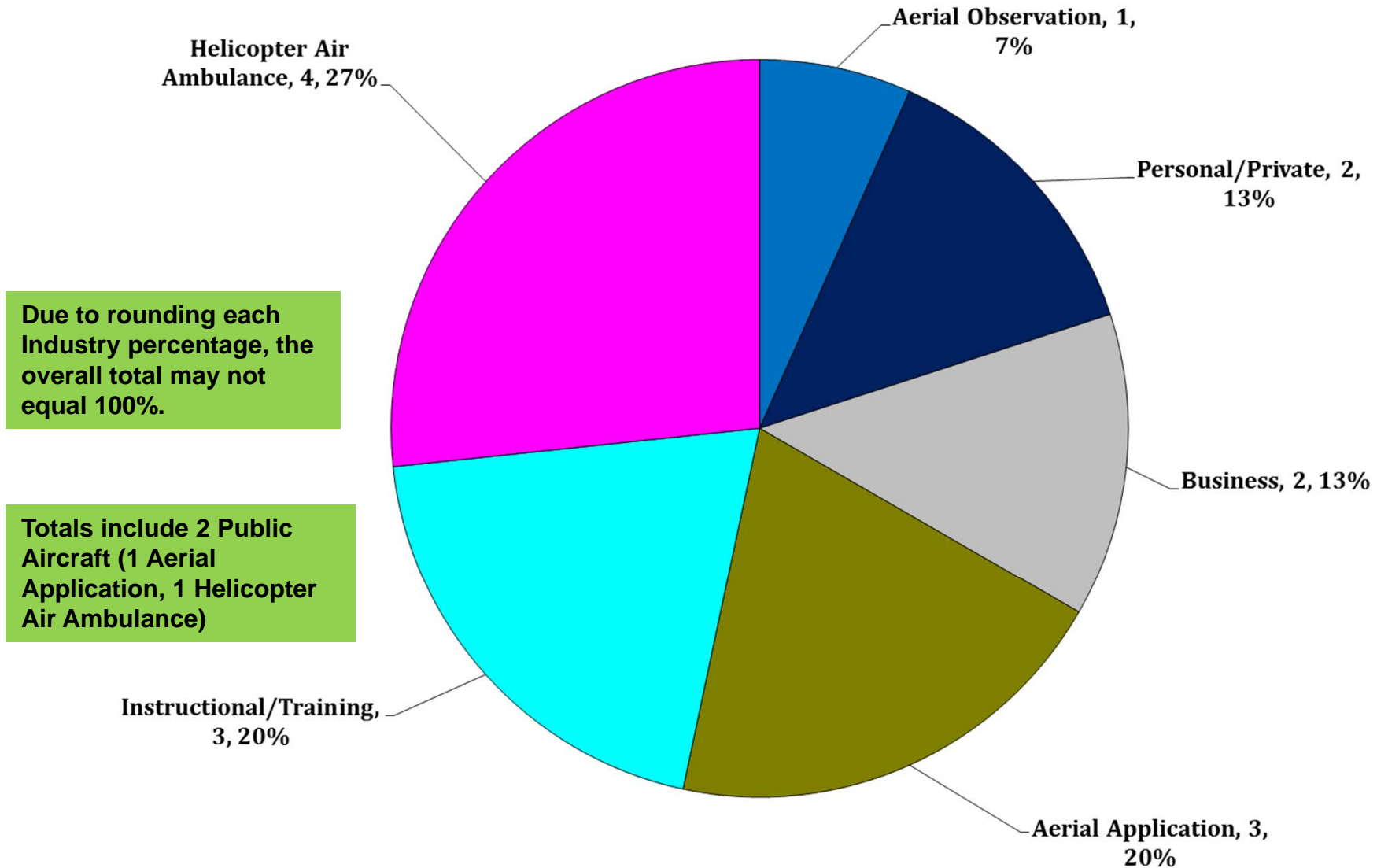
# FY 15 – Total Accidents by Industry (Oct 2014 – June 2015)



Due to rounding each Industry percentage, the overall total may not equal 100%.

Totals include 7 Public Aircraft (5 Law Enforcement, 1 Aerial Application, 1 Helicopter Air Ambulance)

# FY 15 – Total FATAL Accidents by Industry (Oct 2014 - June 2015)



## FY 15 - US Rotorcraft Accidents By Model

MFR	Model	Registered U.S. Fleet Size	Percentage of Total U.S. Fleet	Number of FY15 U.S. Registered Accidents	Percentage of Total FY15 U.S. Registered Accidents
<b>Airbus Helicopters</b>	<b>AS350</b>	<b>837</b>	<b>8%</b>	<b>6</b>	<b>9%</b>
	<b>BK117</b>	<b>174</b>	<b>2%</b>	<b>1</b>	<b>1%</b>
	<b>BO105</b>	<b>73</b>	<b>1%</b>		
	<b>EC120</b>	<b>94</b>	<b>1%</b>		
	<b>EC130</b>	<b>186</b>	<b>2%</b>	<b>1</b>	<b>1%</b>
	<b>EC135</b>	<b>260</b>	<b>2%</b>		

Only models that comprise at least 1% of U.S. registered rotorcraft are listed unless an accident has occurred.

\*Fleet size based on analysis of rotorcraft on FAA registry as of Feb 2015

*For FAA Internal Use Only*





## FY 15 - US Rotorcraft Accidents By Model

<b>MFR</b>	<b>Model</b>	<b>Registered U.S. Fleet Size</b>	<b>Percentage of Total U.S. Fleet</b>	<b>Number of FY15 U.S. Registered Accidents</b>	<b>Percentage of Total FY15 U.S. Registered Accidents</b>
<b>Bell</b>	<b>206 Jet Ranger</b>	<b>1,024</b>	<b>9%</b>	<b>7</b>	<b>10%</b>
	<b>206 Long Ranger</b>	<b>553</b>	<b>5%</b>	<b>7</b>	<b>10%</b>
	<b>212</b>	<b>61</b>	<b>1%</b>		
	<b>407</b>	<b>639</b>	<b>6%</b>	<b>3</b>	<b>4%</b>
	<b>412</b>	<b>95</b>	<b>1%</b>		

Only models that comprise at least 1% of U.S. registered rotorcraft are listed unless an accident has occurred.

\*Fleet size based on analysis of rotorcraft on FAA registry as of Feb 2015

*For FAA Internal Use Only*

## FY 15 - US Rotorcraft Accidents By Model

MFR	Model	Registered U.S. Fleet Size	Percentage of Total U.S. Fleet	Number of FY15 U.S. Registered Accidents	Percentage of Total FY15 U.S. Registered Accidents
<b>Robinson</b>	<b>R-22</b>	<b>1,024</b>	<b>9%</b>	<b>9</b>	<b>13%</b>
	<b>R-44</b>	<b>1,447</b>	<b>13%</b>	<b>11</b>	<b>16%</b>
	<b>R-66</b>	<b>149</b>	<b>1%</b>	<b>1</b>	<b>1%</b>

Only models that comprise at least 1% of U.S. registered rotorcraft are listed unless an accident has occurred.

\*Fleet size based on analysis of rotorcraft on FAA registry as of Feb 2015

*For FAA Internal Use Only*



## FY 15 - US Rotorcraft Accidents By Model

MFR	Model	Registered U.S. Fleet Size	Percentage of Total U.S. Fleet	Number of FY15 U.S. Registered Accidents	Percentage of Total FY15 U.S. Registered Accidents
Sikorsky	(Schweizer) 269/300/TH-55	642	6%	3	4%
	S-76	224	2%		
	S-92	80	1%		

Only models that comprise at least 1% of U.S. registered rotorcraft are listed unless an accident has occurred.

\*Fleet size based on analysis of rotorcraft on FAA registry as of Feb 2015

*For FAA Internal Use Only*



## FY 15 - US Rotorcraft Accidents By Model

MFR	Model	Registered U.S. Fleet Size	Percentage of Total U.S. Fleet	Number of FY15 U.S. Registered Accidents	Percentage of Total FY15 U.S. Registered Accidents
Agusta	A109	142	1%		
	A119	78	1%	1	1%
	AW139	106	1%		
Brantly	B-2	83	1%		
Enstrom	280	94	1%	2	3%
	480	80	1%		
	F28	182	2%	1	1%
Hiller	UH-12/H-23	296	3%	3	4%
MDHI	369	578	5%	2	3%
	900	23	< 1%	1	1%
Restricted Category (all TCs)	HH-1/TH-1/UH-1	250	2%	4	6%
	OH-58	110	1%		
Scott's Bell	47	645	6%	5	7%

Only models that comprise at least 1% of U.S. registered rotorcraft are listed unless an accident has occurred.

\*Fleet size based on analysis of rotorcraft on FAA registry as of Feb 2015

*For FAA Internal Use Only*