



Federal Aviation
Administration

Rotorcraft Directorate ASW-100

Monthly Accident Briefing

June 2017

By: ASW-112, Safety Management Group



FY 17 – U.S. Registered Rotorcraft Accidents

Cumulative Counts – 76 Accidents, 13 Fatal Accidents, 20 Fatalities

Same time period, previous FY: 85 Accidents, 12 Fatal Accidents, 25 Fatalities

	Oct	Nov	Dec	Jan	Feb	Mar	Apr	May	Jun	Jul	Aug	Sep	Total
Accidents:	6	6	6	4	18	4	6	13	13				76
Fatal:	1	2	0	1	4	1	1	2	1				13
Fatalities:	2	3	0	2	8	1	1	2	1				20

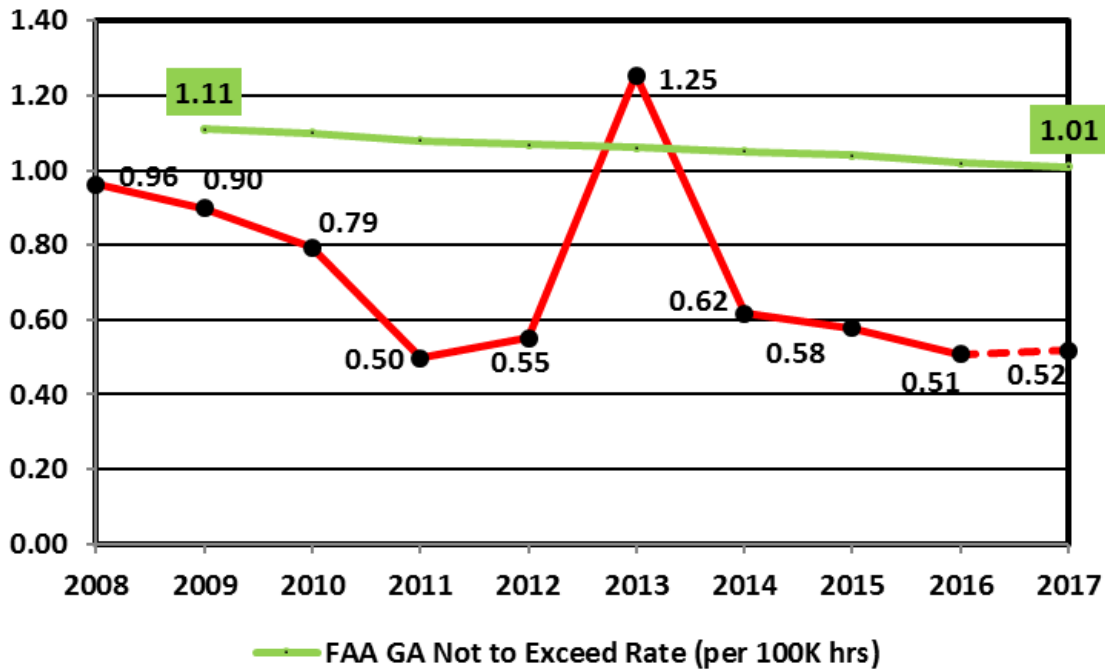
Data Source: FAA, NTSB Databases. Includes only events classified as accidents and does not include incidents. The accident numbers for each month of the Fiscal Year may vary from the previous monthly briefing based on analysis between FAA and NTSB databases for the specified month. The NTSB database may include accidents that were not reported to this office resulting in slightly different numbers.

Accident Operations Summary (Cumulative)

Acronyms: HAA = Helicopter Air Ambulance, ENG = Electronic News Gathering, GA = General Aviation, GOM = Gulf of Mexico

	HAA 91/ 135	GOM 91/ 135	Part 133	Part 135 Other	Air Tour 91/135/136	Part 137	ENG 91/ 135	GA 91	N Reg Outside U.S.
Accidents:	2	3	3		8	13		44	3
Fatal:	1	2	1					6	3
Fatalities:	1	2	1					10	6

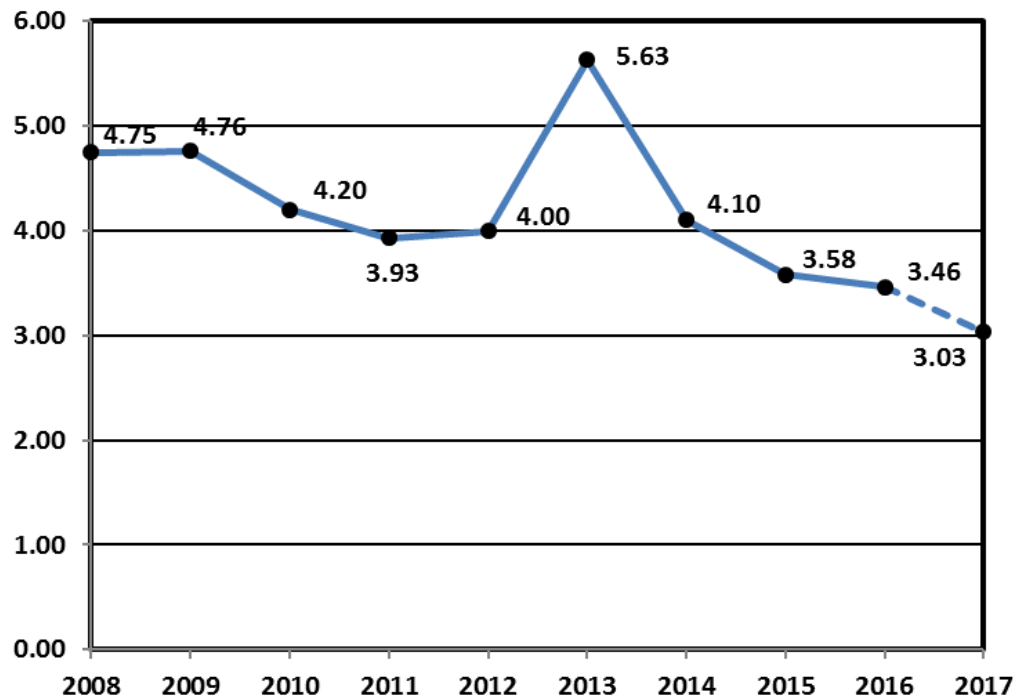
Estimated U.S. Rotorcraft FATAL Accident Rate (per 100,000 hours) – 10 Year Lookback



Rate calculation based on the following:

- 1) Accident totals compiled by ASW-112.
- 2) Historic rotorcraft flight hours extracted from General Aviation and Part 135 Activity Survey. The survey categorizes flight hours by calendar year. Assumption was that hours would be comparable if used for fiscal year calculations.
- 3) FY 11 rotorcraft flight hours and the projected hours for FY 16 and FY 17 were based on the FAA's FY2017-2037 forecast.

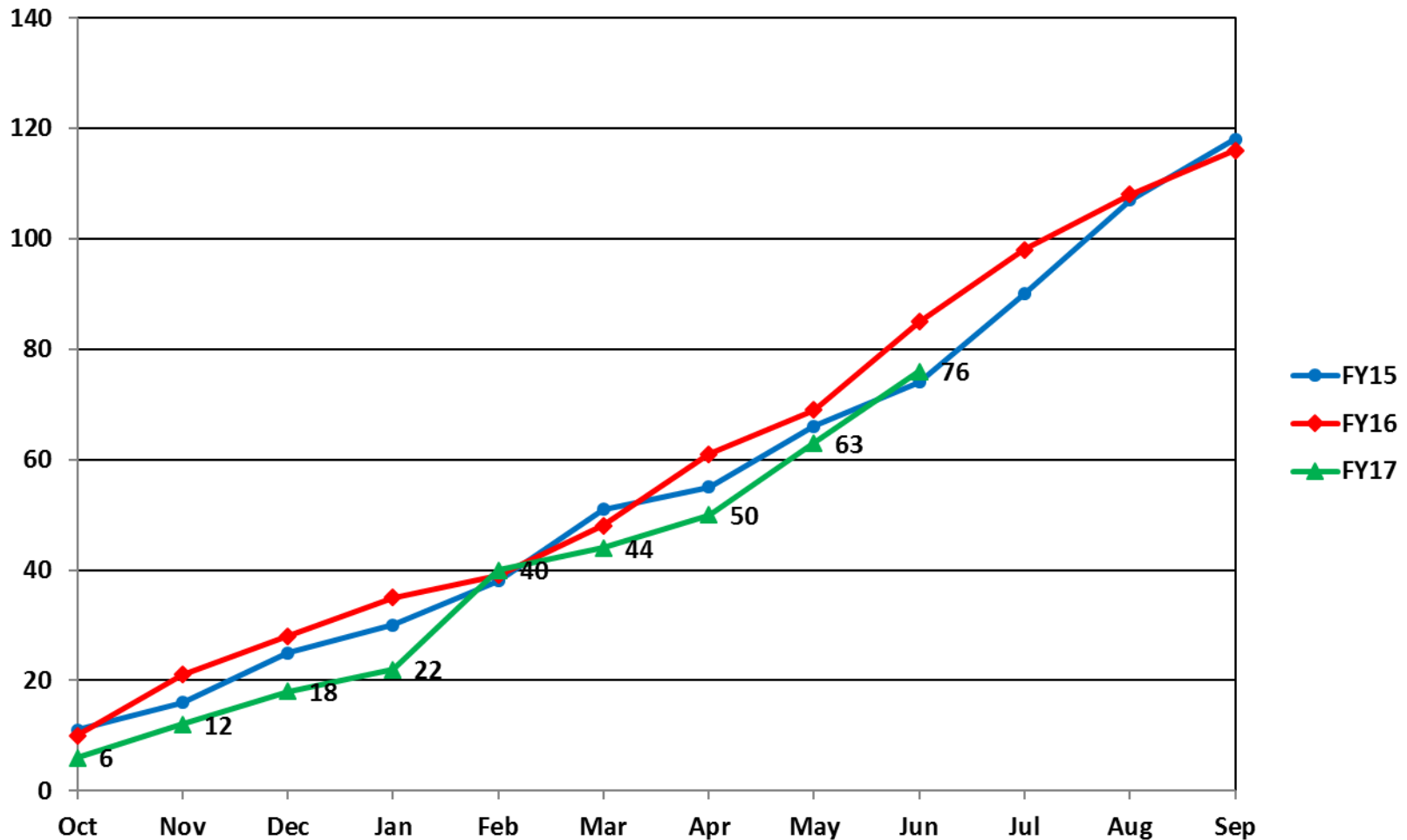
Estimated U.S. Rotorcraft Accident Rate (per 100,000 hours) – 10 Year Lookback



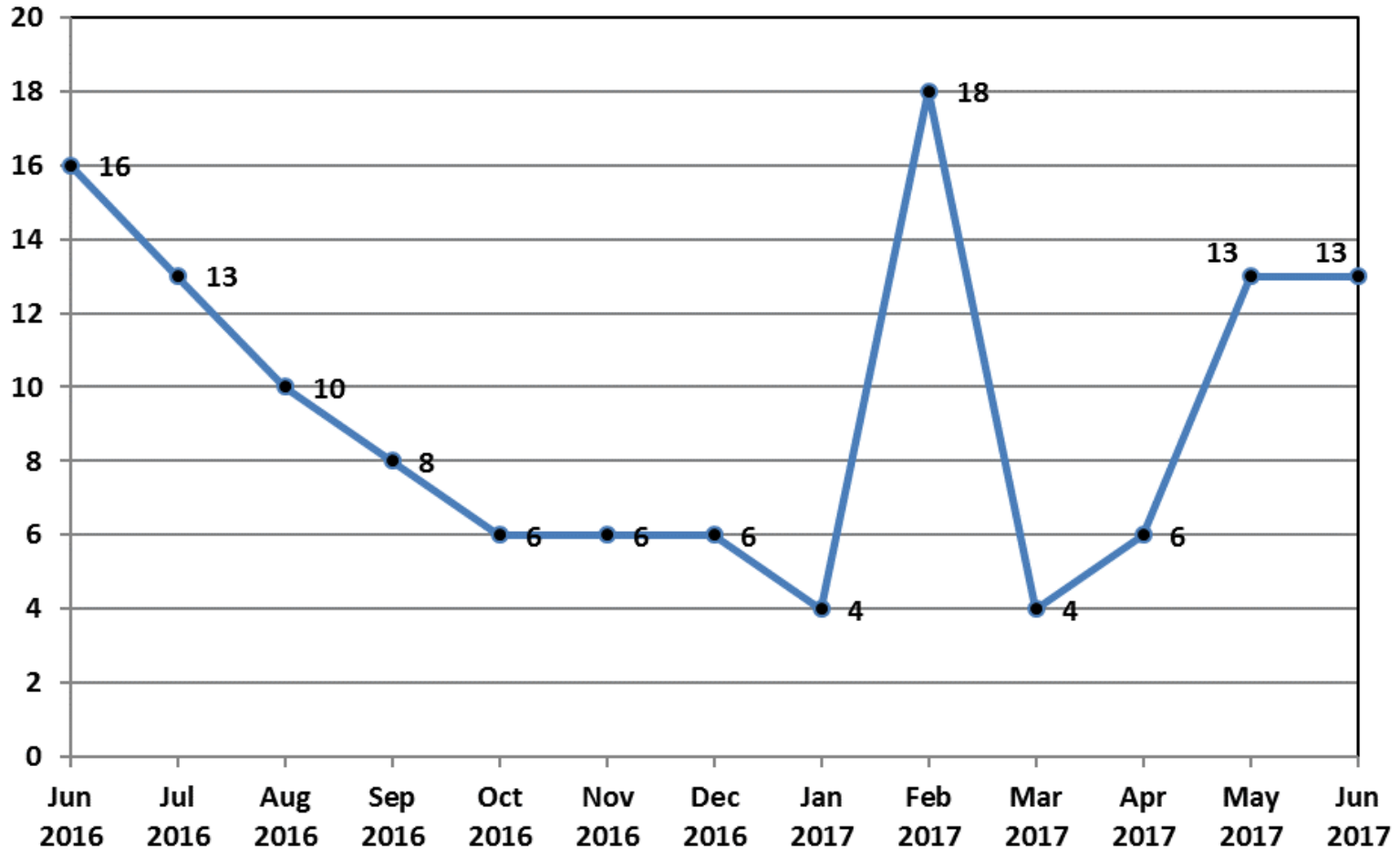
Rate calculation based on the following:

- 1) Accident totals compiled by ASW-112.
- 2) Historic rotorcraft flight hours extracted from General Aviation and Part 135 Activity Survey. The survey categorizes flight hours by calendar year. Assumption was that hours would be comparable if used for fiscal year calculations.
- 3) FY 11 rotorcraft flight hours and the projected hours for FY 16 and FY 17 were based on the FAA's FY2017-2037 forecast.

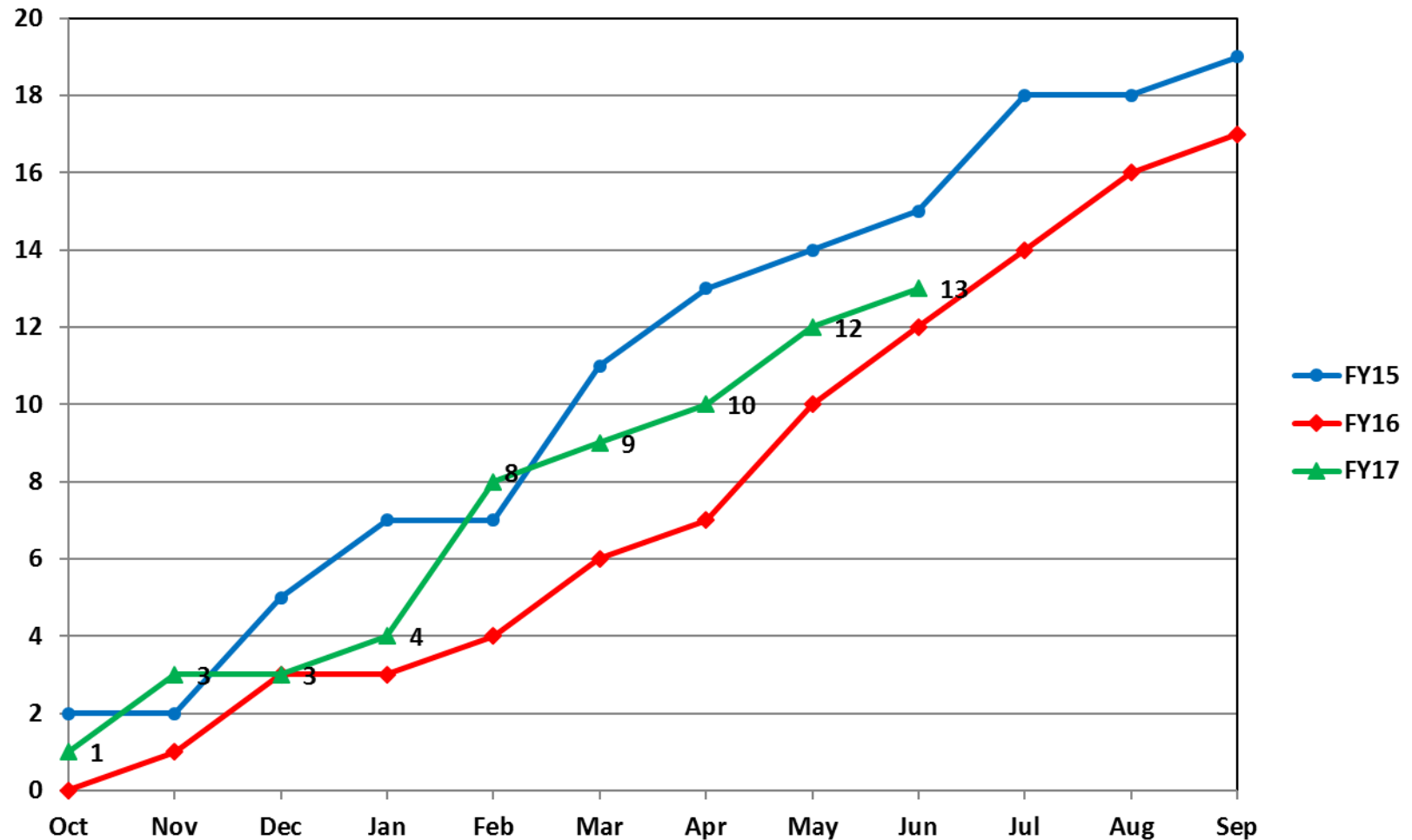
U.S. Registered Rotorcraft Cumulative Accident Count: FY15 - 17



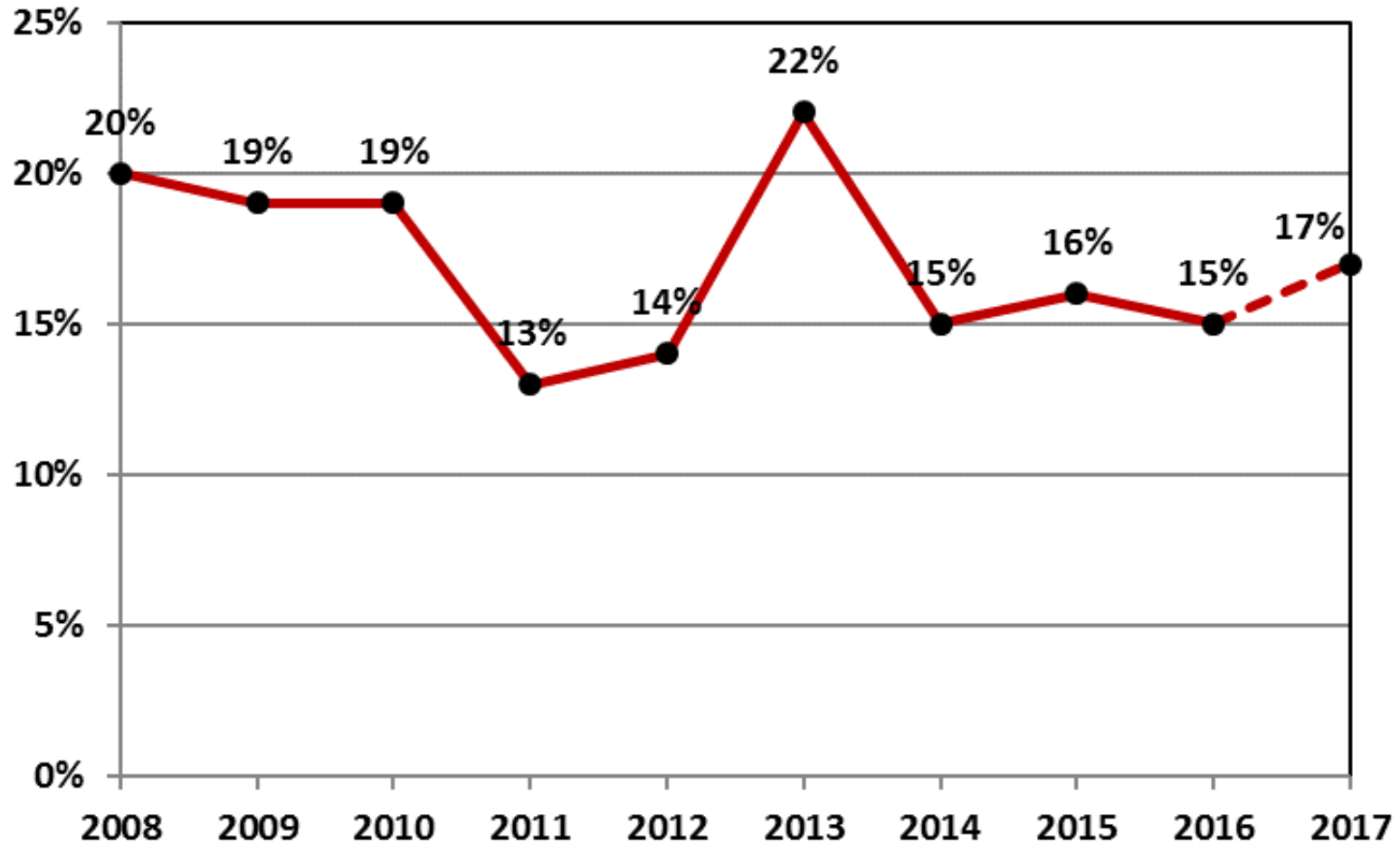
U.S. Registered Rotorcraft 13 Month Rolling Accident Count



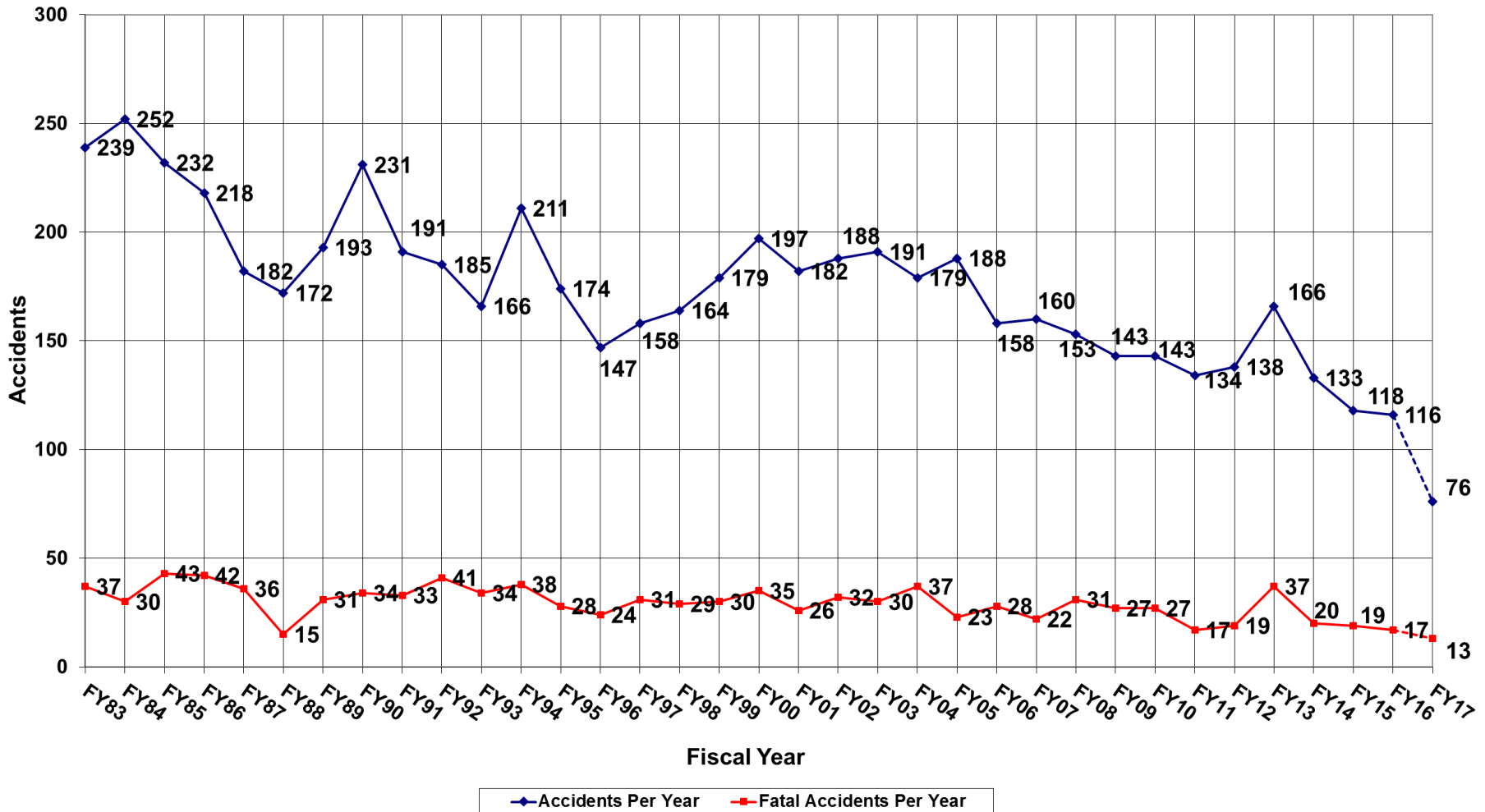
U.S. Registered Rotorcraft Cumulative Fatal Accident Count: FY15 - 17



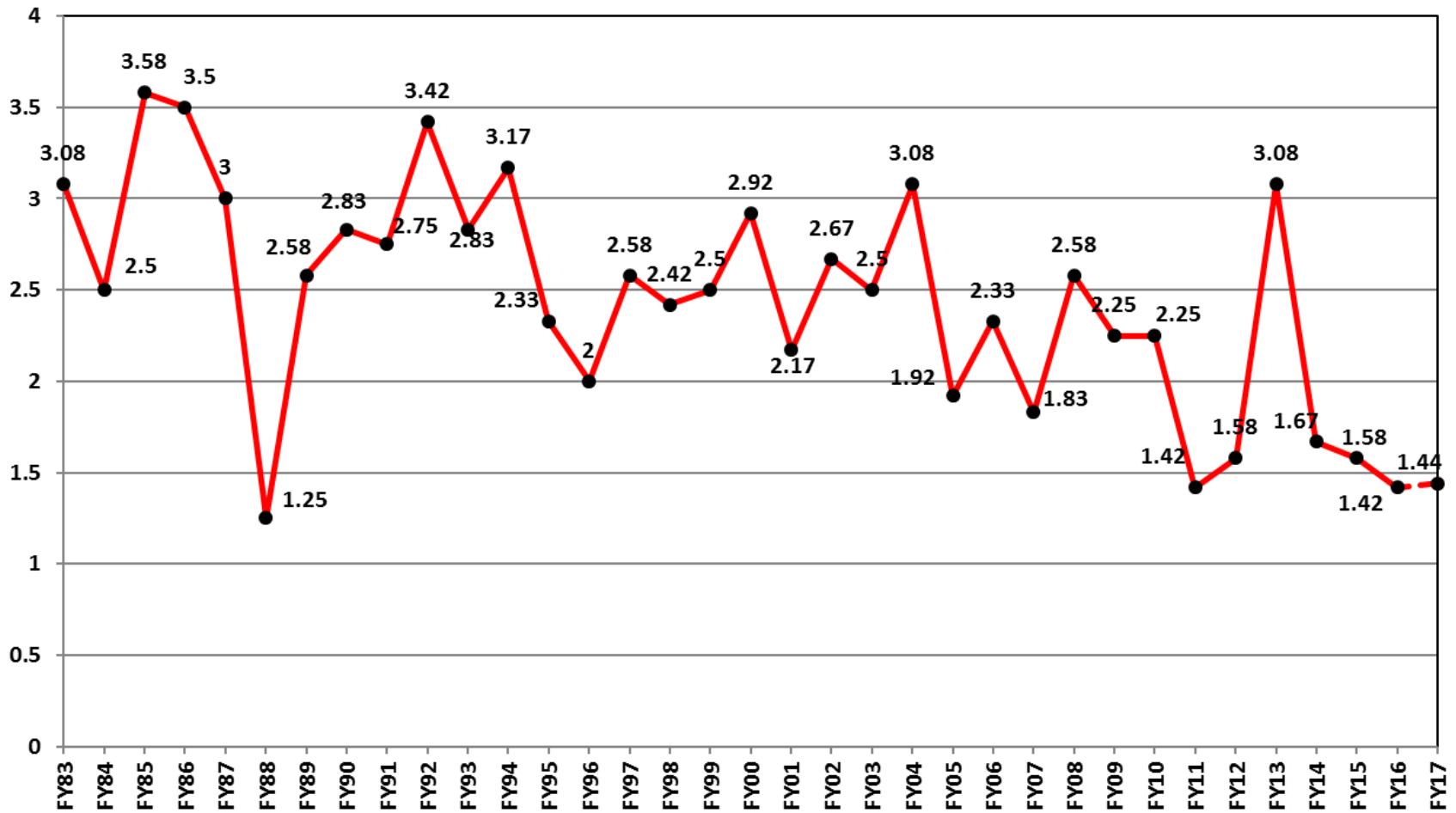
% of U.S. Rotorcraft Accidents with a Fatality (FY17, Oct-Jun)



U.S. Registered Rotorcraft Accidents FY83 - FY17



U.S. Registered Rotorcraft Average Fatal Accidents Per Month, FY83-FY17



FY 17 – U.S. Registered Fatal Rotorcraft Accidents

- 6-4-17 – Robinson R-44, N7091F, Dimmitt, TX, Part 91, 1 Fatal
 - Business flight; observation of fields, facilities, and other assets
 - Search initiated when pilot did not return from flight
 - Crashed under unknown circumstances; no witnesses [NTSB: CEN17FA209](#)

- 5-25-17 – Airbus Helicopters EC135P2, N62UP, Wilmington, DE, Part 91, 1 Fatal
 - Helicopter Air Ambulance; IFR training flight in IMC at New Castle airport
 - Declared missed approach to Rwy 1; climbed on course to 2,525 feet MSL
 - Began right turn; rapid descent to crash; post-crash fire [NTSB: ERA17FA190](#)

- 4-21-17 – Scott’s Bell 47G, N865Z, Timmonsville, SC, Part 91, 1 Fatal
 - Personal flight, planned “golf ball drop” at fundraising event
 - Crashed 13 miles from event site; post-crash fire [NTSB: ERA17FA164](#)

FY 17 – U.S. Registered Fatal Rotorcraft Accidents

- 3-14-17 – MDHI 369FF, N530KD, Chalmers, IN, Part 133, 1 Fatal
 - Power line construction flight
 - Crashed while threading sock line through tower [NTSB: CEN17FA127](#)

- 2-27-17 – Bell 407, N1371, Chauvin, LA, Part 91, 1 Fatal
 - Had completed offshore passenger drop off (Part 135 flight) to oil platform
 - Inbound for minor maintenance to engine cowl fastener [NTSB: CEN17FA112](#)

- 2-15-17 – Bell 429, N598PB, Shreveport, LA, Part 91, 2 Fatal
 - Night flight returning from Shreveport, LA to Center, TX
 - IMC prevailed and no flight plan filed [NTSB: CEN17FA103](#)

- 2-6-17 – Bell 206B, N978RH, 8 mi offshore Galveston, TX, Part 135, 1 Fatal, 2 Serious
 - Night passenger flight returning from oil tanker in Galveston Bay
 - Reported lights of Galveston in sight; impacted water [NTSB: CEN17FA100](#)

FY 17 – U.S. Registered Fatal Rotorcraft Accidents

- 1-4-17 – Robinson R22, N702JJ, San Pedro, CA, Part 91, 2 Fatal
– Local photography flight of cruise ships
– Collided with water after making several orbits around a ship
– Came to rest upright in 18 feet of water NTSB: [WPR17FA047](#)
- 11-16-16 – MDHI 369D, N81GG, Pukoo, HI, Part 91, 2 Fatal
– Night VFR Personal/Private flight from Oahu to private residence on Molokai
– Localized low visibility with heavy rain
– Crashed ½ mile from pilot’s private helipad NTSB: [WPR17FA021](#)
- 10-6-16 – Fairchild Hiller FH 1100, N4035G, Lino Lakes, MN, Part 91, 2 Fatal
– Personal/Private flight, in-flight breakup
– Post crash fire NTSB: [CEN17FA012](#)

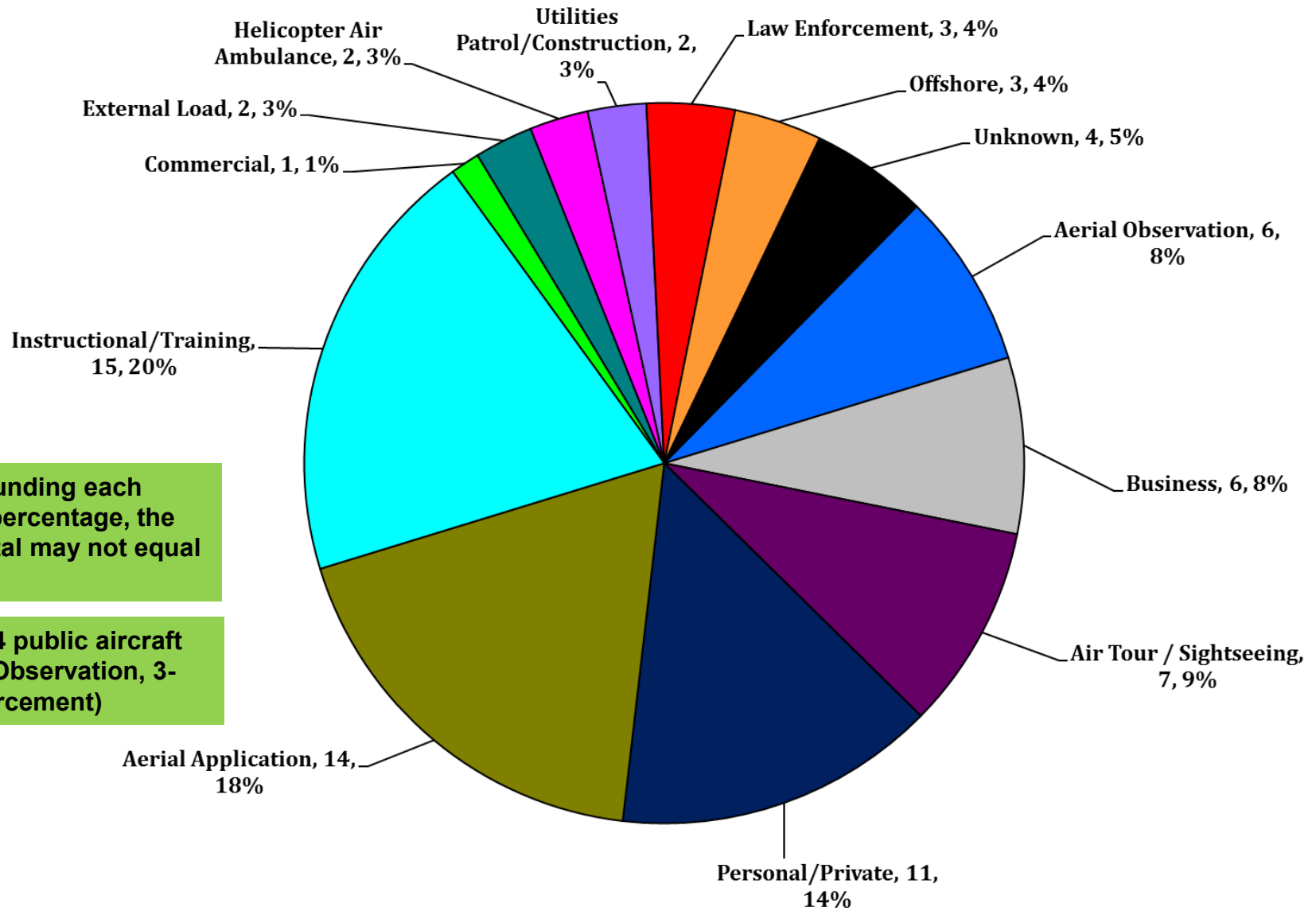
FY 17 – U.S. Registered Fatal Rotorcraft Accidents Outside U.S.

- 5-10-17 – Enstrom 480B, N480W, Fundres, Italy, 1 Fatal
 - Enroute from Bolzano to Linz, Italy; inflight break up [NTSB: ERA17WA183](#)

- 2-7-17 – MDHI 600N, N245SE, Guatemala City, Guatemala, 4 Fatal
 - Crashed at Guatemala City-La Aurora Airport NTSB: CEN17WA102

- 11-19-16 – Agusta Westland A109AII, N109W, Varese, Italy, 1 Fatal, 2 Serious
 - Crashed in mountainous area near Italian/Swiss border [NTSB: ERA17WA060](#)

FY 17 – Total Accidents by Industry (Oct 2016-Jun 2017)

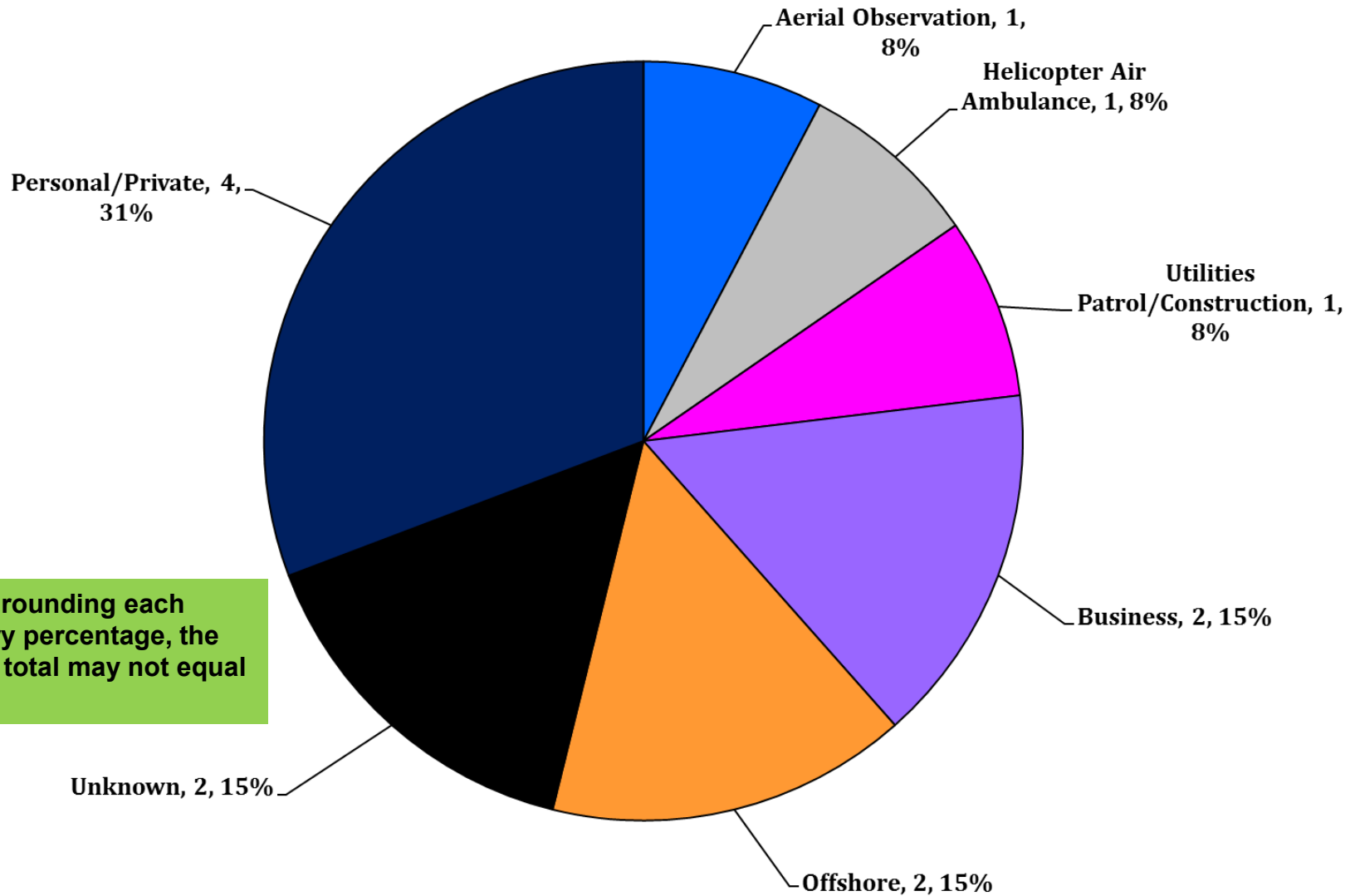


Due to rounding each Industry percentage, the overall total may not equal 100%.

Includes 4 public aircraft (1-Aerial Observation, 3-Law Enforcement)



FY 17 – Total FATAL Accidents by Industry (Oct 2016-Jun 2017)



FY 17 - US Rotorcraft Accidents By Model

MFR	Model	Registered U.S. Fleet Size	Percentage of Total U.S. Fleet	Number of FY17 U.S. Registered Accidents	Percentage of Total FY17 U.S. Registered Accidents
Airbus Helicopters	AS350 (H125)	851	8%	3	4%
	BK117 (H145)	176	2%		
	EC120 (H120)	89	1%		
	EC130 (H130)	214	2%	3	4%
	EC135 (H135)	278	2%	2	3%

Only models that comprise at least 1% of U.S. registered rotorcraft are listed unless an accident has occurred.

*Fleet size based on analysis of rotorcraft on FAA registry as of Feb 2017

FY 17 - US Rotorcraft Accidents By Model

MFR	Model	Registered U.S. Fleet Size	Percentage of Total U.S. Fleet	Number of FY17 U.S. Registered Accidents	Percentage of Total FY17 U.S. Registered Accidents
Bell	206Bs	1,007	9%	8	11%
	206Ls	569	5%	1	1%
	407	707	6%	3	4%
	412	104	1%		
	429	78	1%	1	1%

Only models that comprise at least 1% of U.S. registered rotorcraft are listed unless an accident has occurred.

*Fleet size based on analysis of rotorcraft on FAA registry as of Feb 2017

FY 17 - US Rotorcraft Accidents By Model

MFR	Model	Registered U.S. Fleet Size	Percentage of Total U.S. Fleet	Number of FY17 U.S. Registered Accidents	Percentage of Total FY17 U.S. Registered Accidents
Robinson	R-22	1,023	9%	14	18%
	R-44	1,577	14%	12	16%
	R-66	212	2%	1	1%

Only models that comprise at least 1% of U.S. registered rotorcraft are listed unless an accident has occurred.

*Fleet size based on analysis of rotorcraft on FAA registry as of Feb 2017

FY 17 - US Rotorcraft Accidents By Model

MFR	Model	Registered U.S. Fleet Size	Percentage of Total U.S. Fleet	Number of FY17 U.S. Registered Accidents	Percentage of Total FY17 U.S. Registered Accidents
Sikorsky	(Schweizer) 269/300/TH-55	600	5%	4	5%
	S-76	203	2%		
	S-92	79	1%		

Only models that comprise at least 1% of U.S. registered rotorcraft are listed unless an accident has occurred.

*Fleet size based on analysis of rotorcraft on FAA registry as of Feb 2017

FY 17 - US Rotorcraft Accidents By Model

MFR	Model	Registered U.S. Fleet Size	Percentage of Total U.S. Fleet	Number of FY17 U.S. Registered Accidents	Percentage of Total FY17 U.S. Registered Accidents
Brantly	B-2	82	1%	2	3%
Enstrom	280	100	1%		
	480	60	1%	1	1%
	F28	171	2%		
Fairchild Hiller	FH-1100	21	< 1%	1	1%
Erickson	S-64	24	< 1%	1	1%
Hiller	UH-12/H-23	285	3%	1	1%
Kaman	K1200	16	< 1%	1	1%
Leonardo (formerly Agusta Westland)	A109	148	1%	1	1%
	A119	80	1%		
	AW139	111	1%		
MDHI	369	558	5%	6	8%
	600N	26	< 1%	1	1%
Restricted Category (all TCs)	HH-1/TH-1/UH-1	217	2%	2	3%
	OH-58	111	1%	4	5%
Scott's Bell	47	608	5%	3	4%

Only models that comprise at least 1% of U.S. registered rotorcraft are listed unless an accident has occurred.

*Fleet size based on analysis of rotorcraft on FAA registry as of Feb 2017