



**Federal Aviation
Administration**

Rotorcraft Standards Branch AIR-680

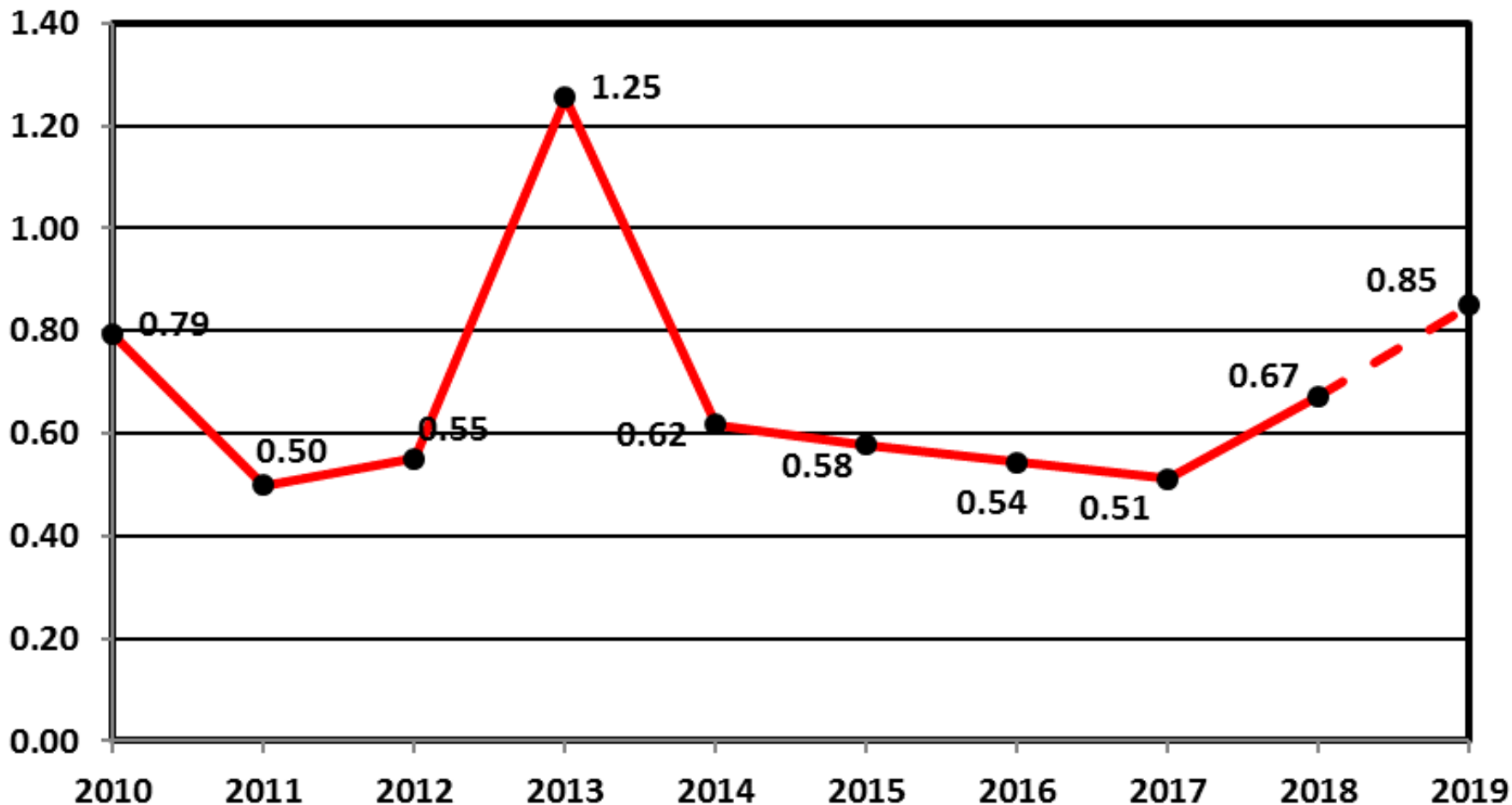
Monthly Accident Briefing

June 2019

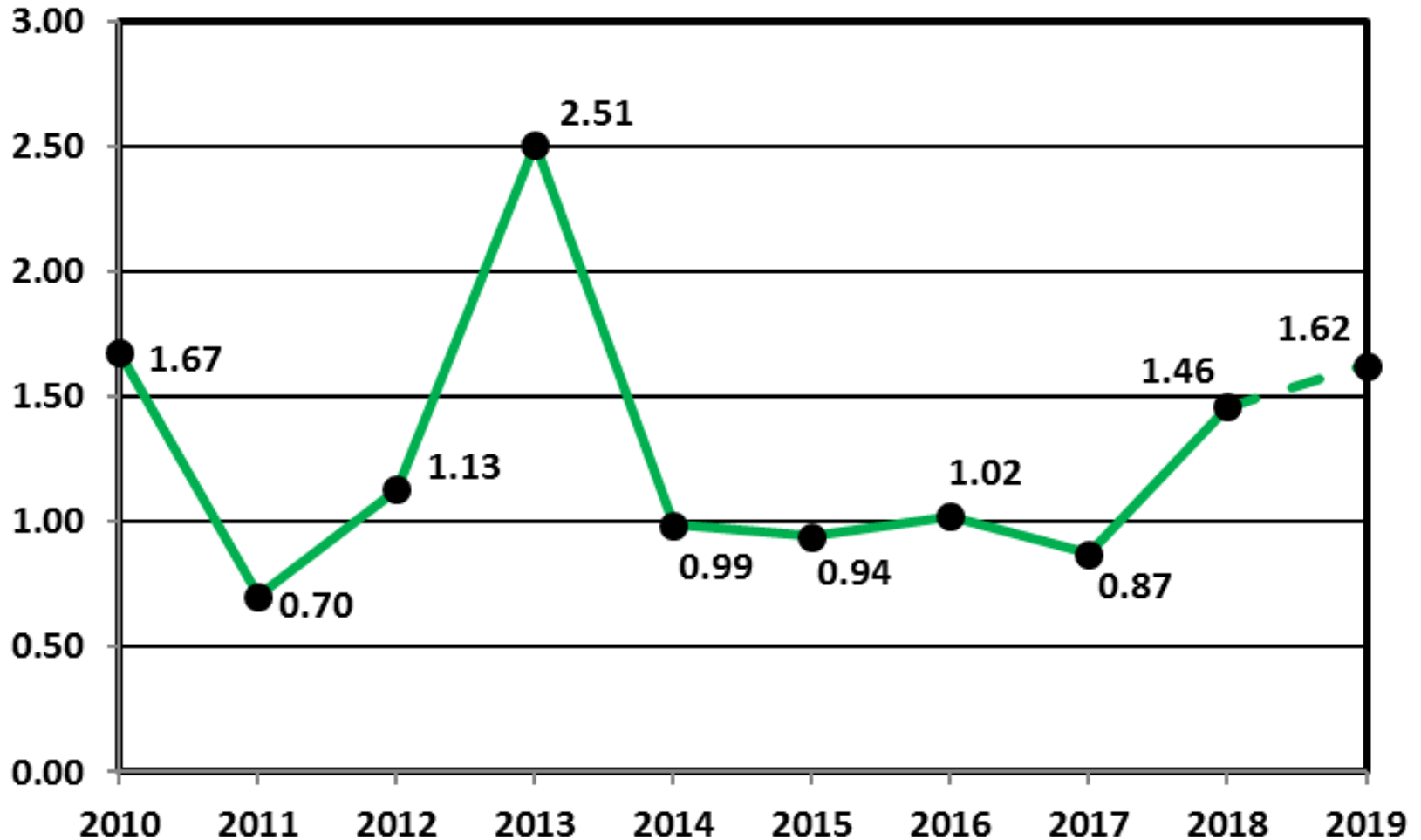
**By: AIR-682, Safety Management Section,
Rotorcraft Standards Branch**



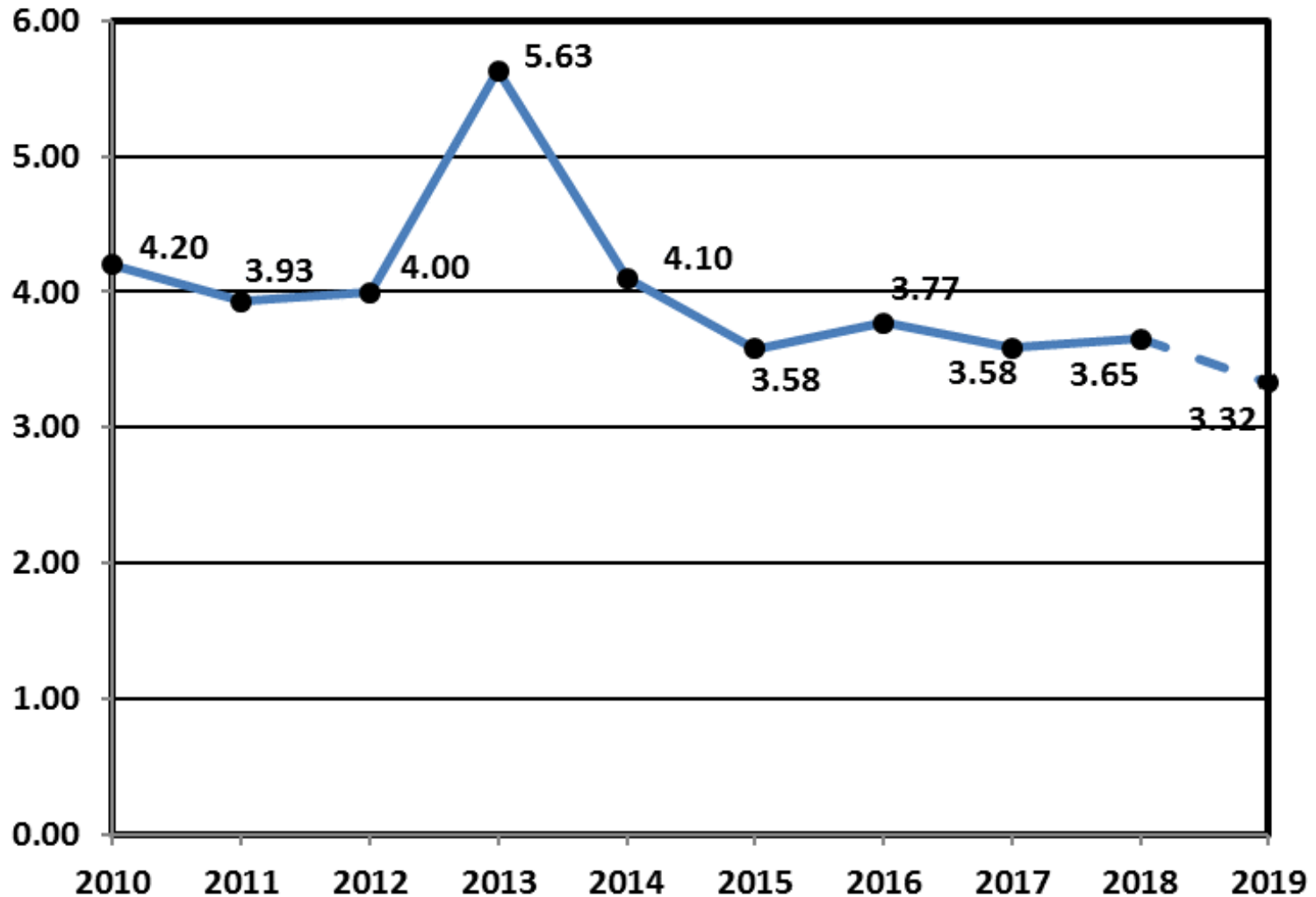
Estimated U.S. Rotorcraft FATAL Accident Rate (per 100,000 hours) – 10 Year Lookback



Estimated U.S. Rotorcraft Fatality Rate (per 100,000 hours) – 10 Year Lookback



Estimated U.S. Rotorcraft Accident Rate (per 100,000 hours) – 10 Year Lookback



FY 19 – U.S. Registered Rotorcraft Event Counts

	Oct	Nov	Dec	Jan	Feb	Mar	Apr	May	Jun	Jul	Aug	Sep	YTD
Accidents:	8	8	3	10	3	11	15	13	15				86
Fatal Acc:	3	4	0	2	0	4	2	3	4				22
Fatalities:	4	11	0	4	0	5	4	7	7				42

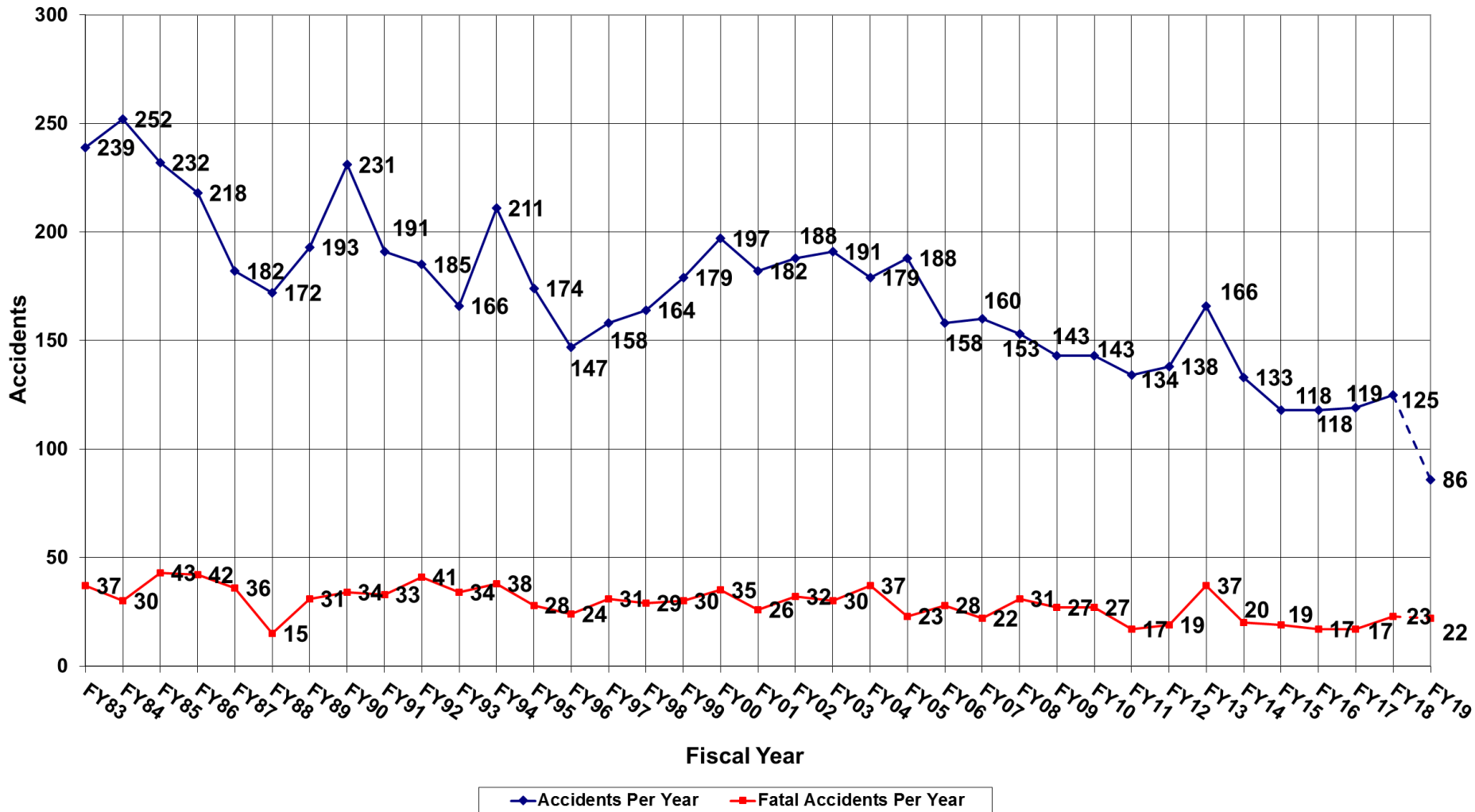
Same time period, previous FY: 84 Accidents, 18 Fatal Accidents, 40 Fatalities

Data Source: FAA, NTSB Databases. Includes only events classified as accidents and does not include incidents. The accident numbers for each month of the Fiscal Year may vary from the previous monthly briefing based on analysis between FAA and NTSB databases for the specified month. The NTSB database may include accidents that were not reported to this office resulting in slightly different numbers.

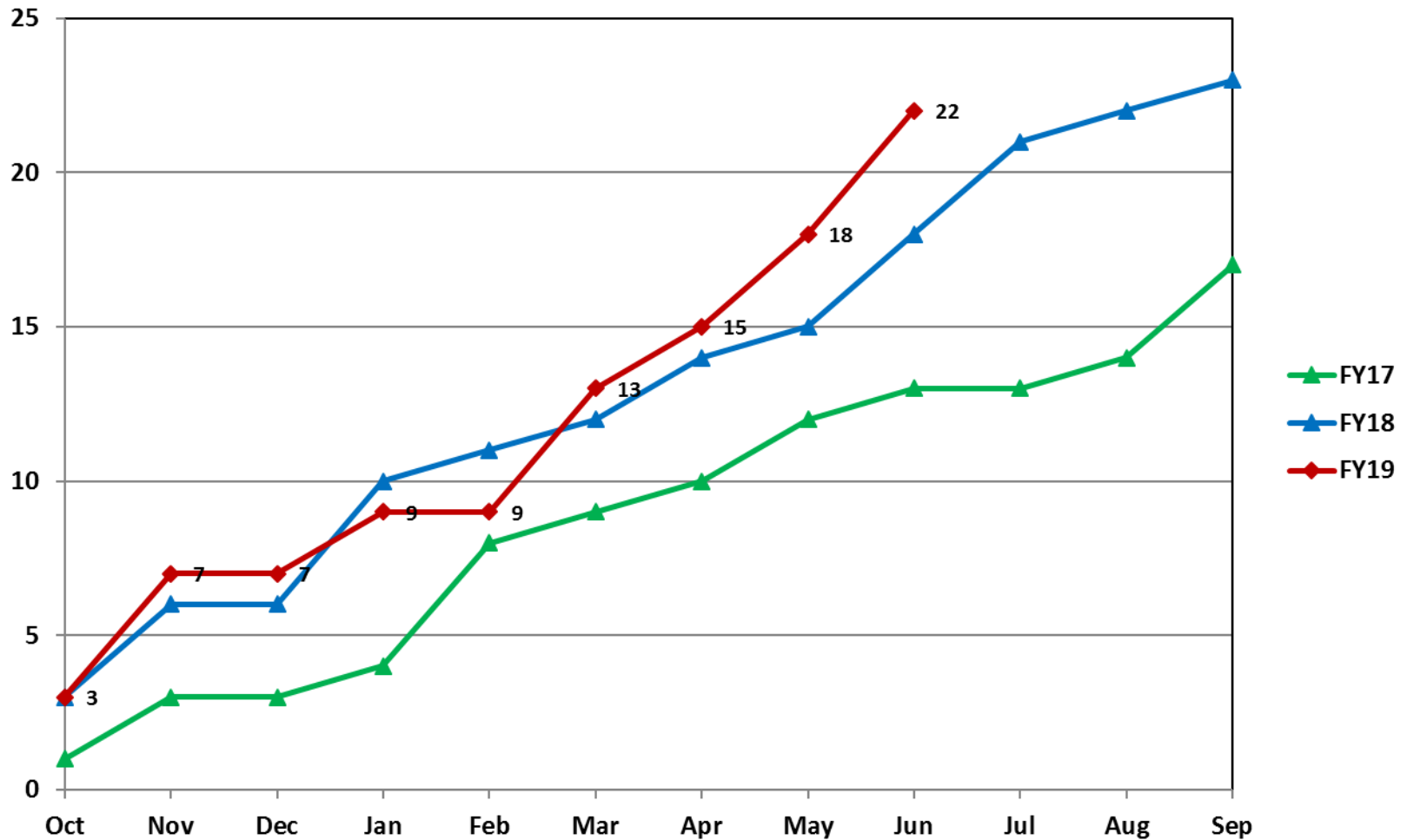
Estimated Rates by Month (per 100,000 flight hours)

	Oct	Nov	Dec	Jan	Feb	Mar	Apr	May	Jun	Jul	Aug	Sep	YTD
Accidents:	2.57	3.00	1.29	4.22	1.11	3.53	4.74	4.18	4.57				3.32
Fatal Acc:	0.96	1.5	0	0.84	0	1.28	0.63	0.96	1.22				0.85
Fatalities:	1.28	4.13	0	1.69	0	1.6	1.27	2.25	2.13				1.62

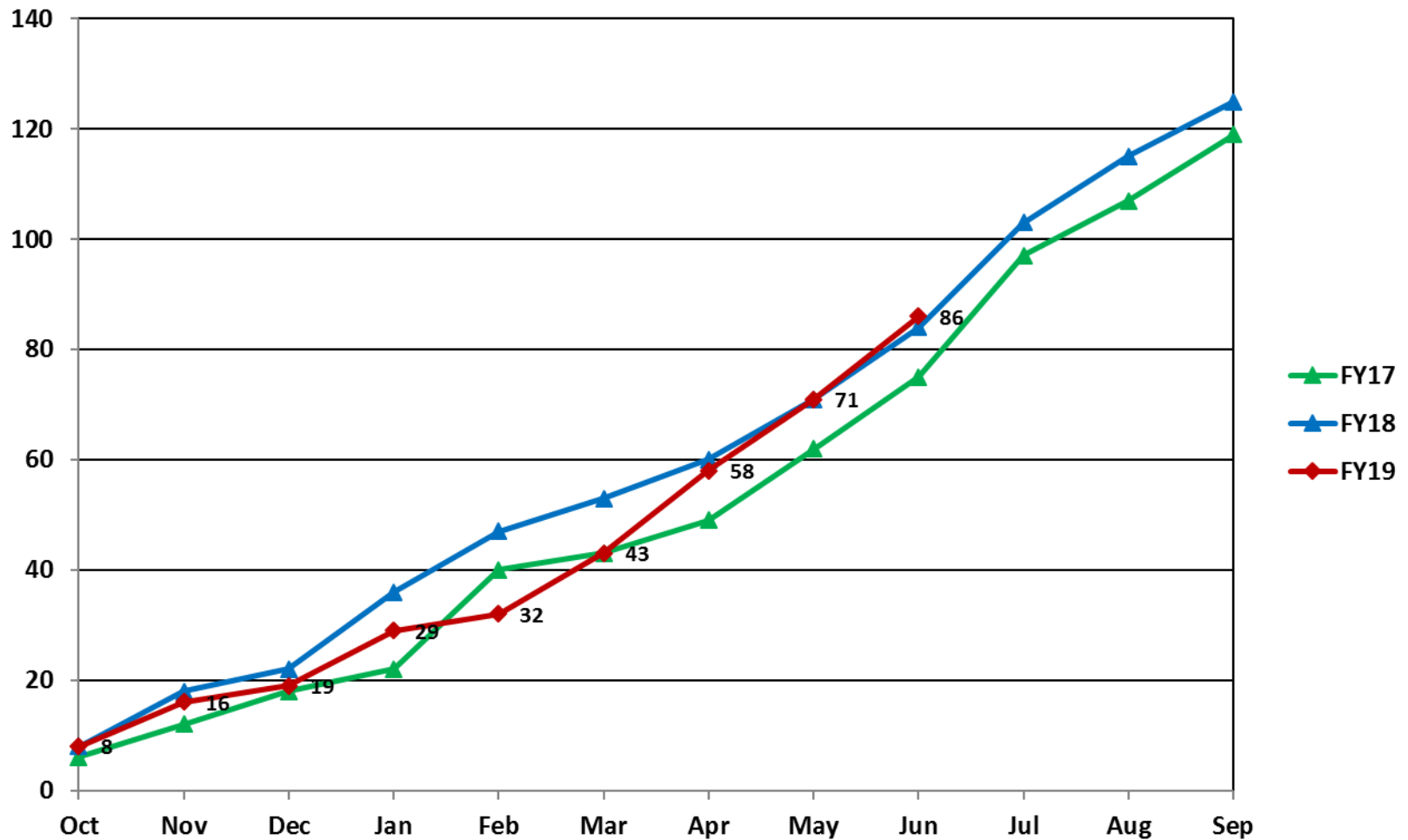
U.S. Registered Rotorcraft Accidents FY83 - FY19



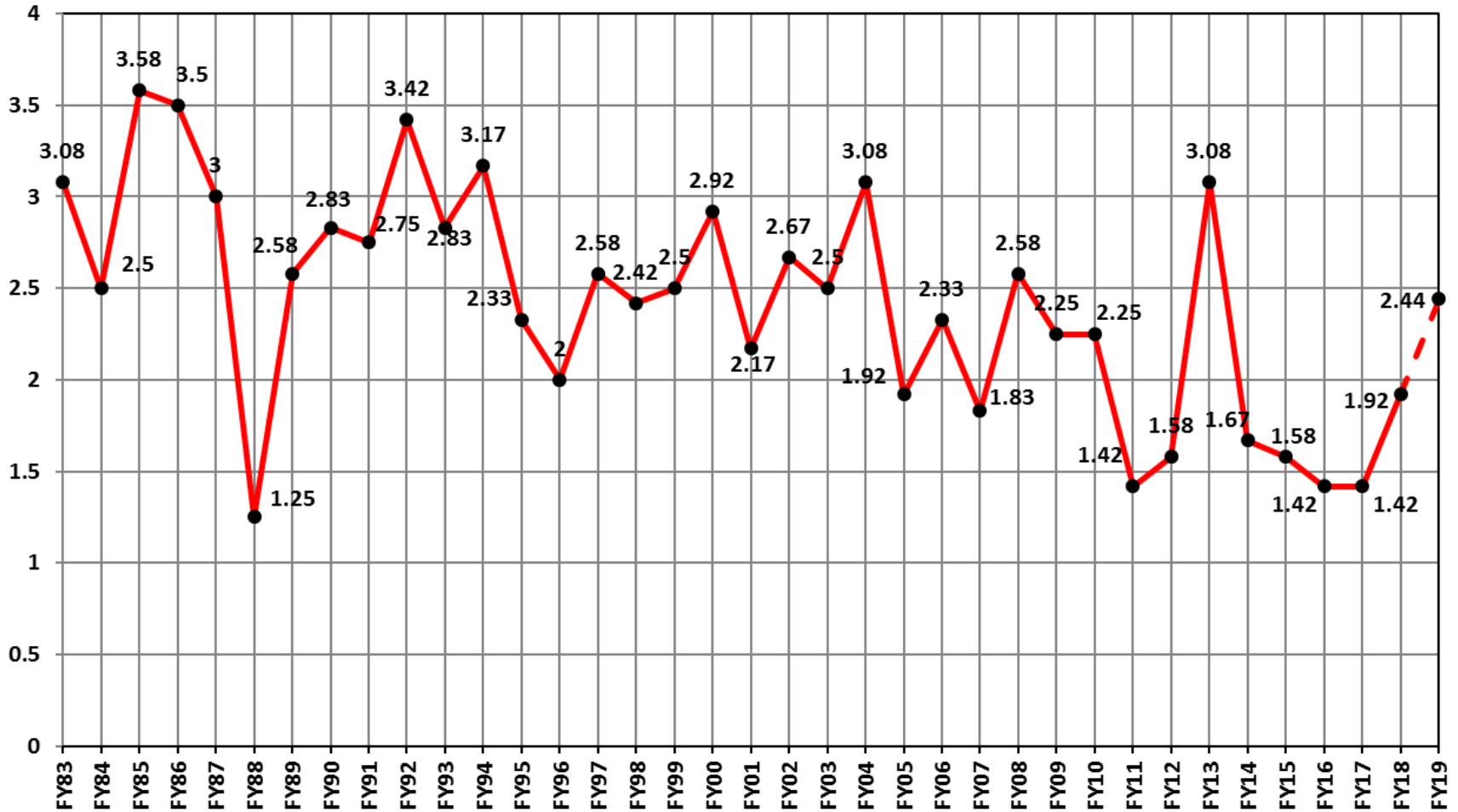
U.S. Registered Rotorcraft Cumulative Fatal Accident Count: FY17 - 19



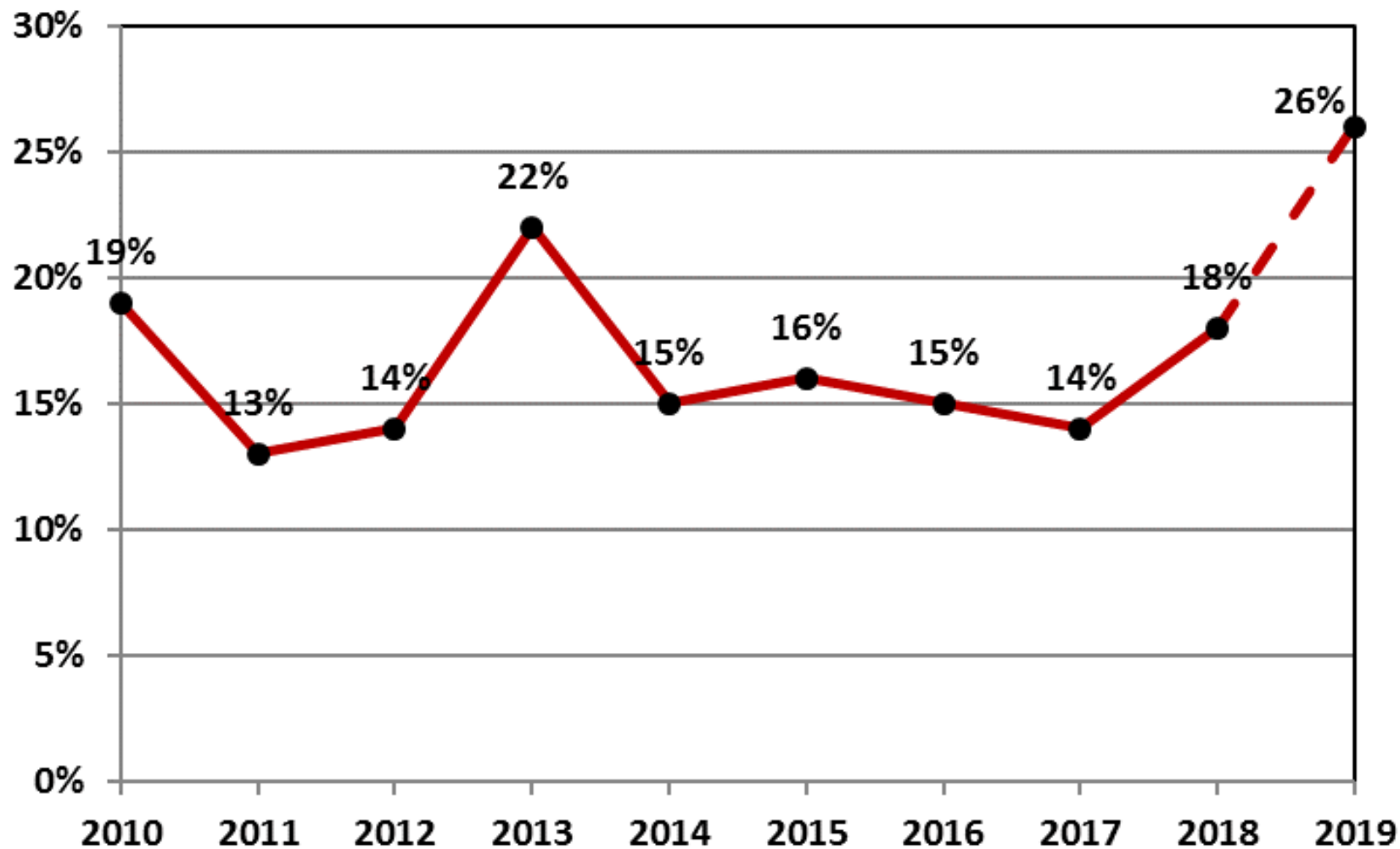
U.S. Registered Rotorcraft Cumulative Accident Count: FY17 - 19



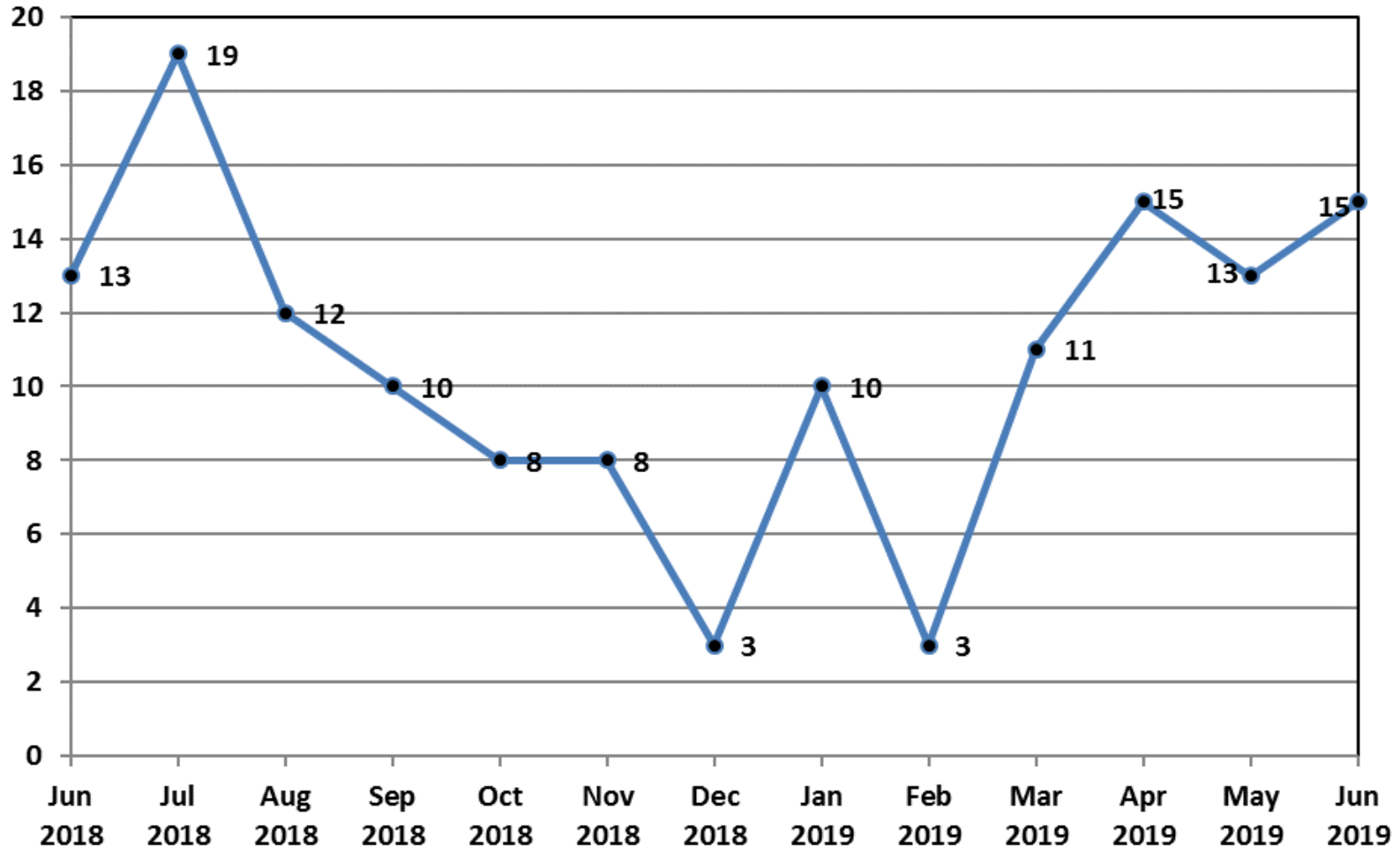
U.S. Registered Rotorcraft Average Fatal Accidents Per Month, FY83-FY19



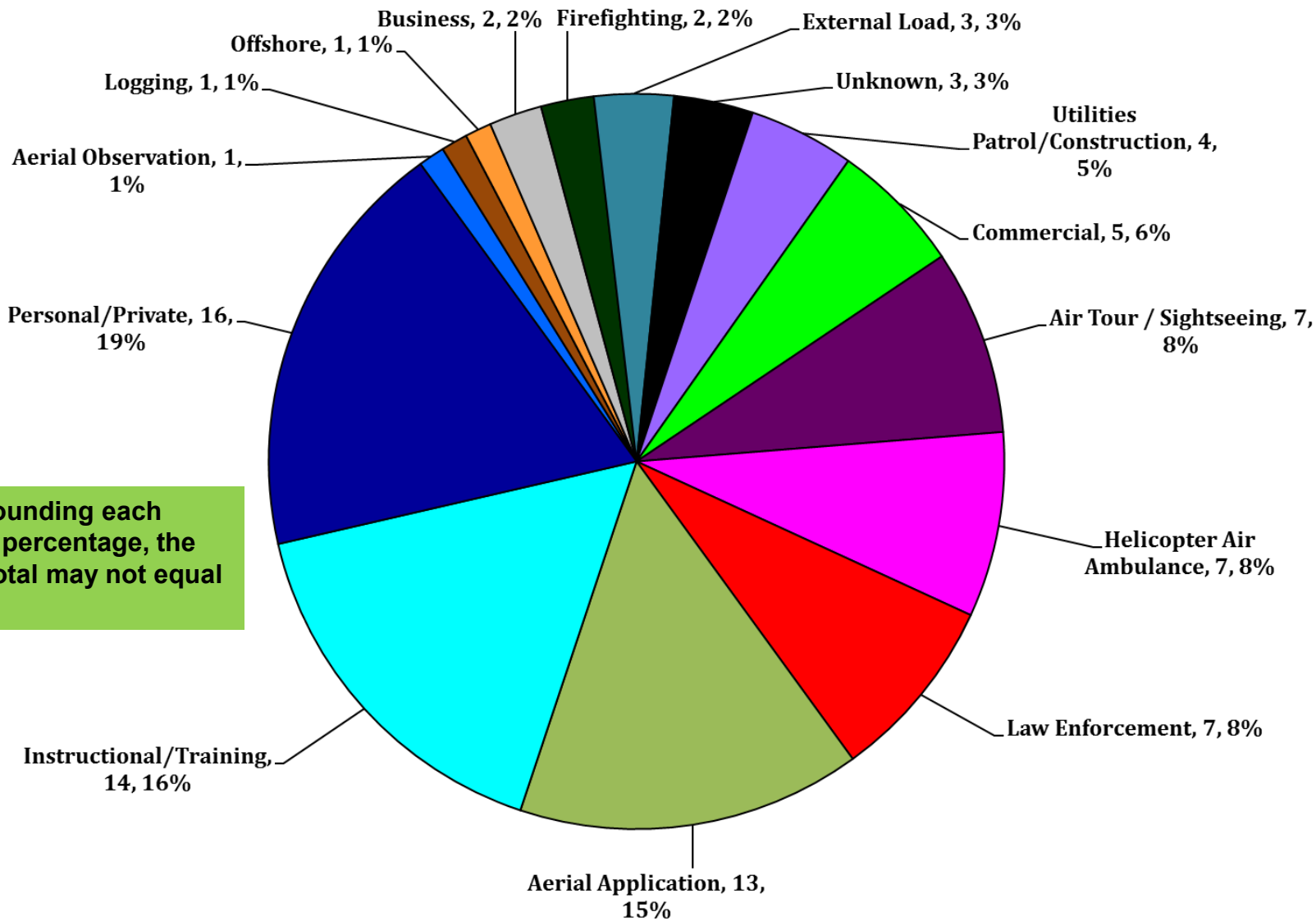
% of U.S. Rotorcraft Accidents with a Fatality (FY19, Oct-Jun)



U.S. Registered Rotorcraft 13 Month Rolling Accident Count



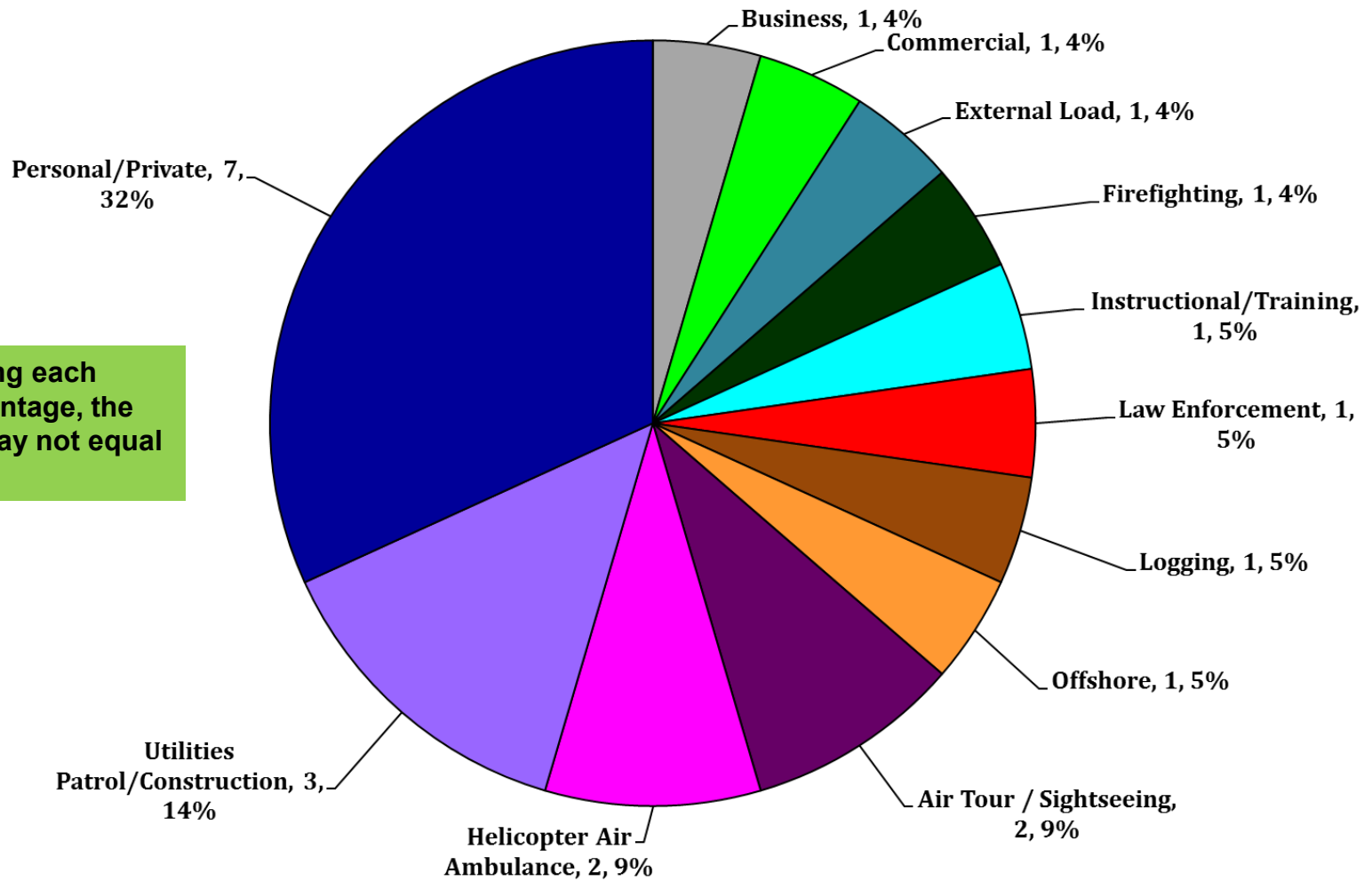
FY 19 – Total Accidents by Industry (Oct 2018 – Jun 2019)



Due to rounding each Industry percentage, the overall total may not equal 100%.



FY 19 – Total FATAL Accidents by Industry (Oct 2018 - Jun 2019)



Due to rounding each Industry percentage, the overall total may not equal 100%.

FY 19 – U.S. Registered Fatal Rotorcraft Accidents

- 6-28-19 – Leonardo A109S, N11NM, Brainerd, MN, Part 135, 2 fatal, 1 serious
 - Night IFR HAA flight; returning to Brainerd after patient delivery to Robbinsdale
 - Crashed during approach from ILS Runway 23 [NTSB: CEN19FA185](#)

- 6-17-19 – Robinson R44, N7187D, Avalon, CA, Part 91, 1 fatal
 - Personal use VFR flight; maneuvering near Catalina Island
 - IMC prevailed in the area at the time of crash [NTSB: WPR19FA175](#)

- 6-10-19 – Leonardo A109E, N200BK, New York City, NY, Part 91, 1 fatal
 - Business VFR flight from East 34th Street Heliport to Linden, NJ
 - IMC prevailed; a/c crashed into the roof of a building [NTSB: ERA19FA191](#)

- 6-2-19 – Robinson R44, N41351, Cass, AR, Part 91, 3 fatal, 1 serious
 - Local sightseeing flight at a music festival
 - Crashed under unknown circumstances [NTSB: CEN19FA160](#)

FY 19 – U.S. Registered Fatal Rotorcraft Accidents

- 5-17-19 – Robinson R44, N744TW, Alpine, UT, Part 91, 2 fatal
 - Personal use cross country flight
 - IMC prevailed; a/c crashed in mountainous terrain [NTSB: WPR19FA148](#)

- 5-4-19 – Guimbal Cabri G2, N572MD, Kent Island, MD, Part 91, 2 fatal
 - Personal use; flying around the southern point of Kent Island
 - IMC prevailed; a/c impacted in Chesapeake Bay [NTSB: ERA19FA163](#)

- 4-29-19 – Robinson R44, N808NV, Kailua, HI, Part 135, 3 fatal
 - Air Tour flight; crashed in residential area [NTSB: WPR19FA123](#)

- 4-4-19 – Robinson R44, N4046J, Tampa, FL, Part 91, 1 grd fatal, 1 grd serious, no injuries to 2 occupants on a/c
 - Personal use; positioning to Sarasota when power loss occurred
 - Autorotated to a roadway, main rotor blades hit pole, fractured, flew into a truck
 - One truck occupant fatally injured by fractured blade [NTSB: ERA19FA142](#)

FY 19 – U.S. Registered Fatal Rotorcraft Accidents

- 3-27-19 – Airbus Helicopters AS350B3, N818MC, Montgomery, TX Part 91,
1 fatal, 1 serious, 1 minor
 - Supporting controlled burn; Finished drop of ignitable plastic spheres
 - Preparing to depart for airport; crashed in wooded area [NTSB: CEN19FA109](#)

- 3-10-19 – Bell 407, N577AL, Galliano, LA Part 135, 2 fatal
 - On demand passenger flight from Galliano, LA to Gulf of Mexico
 - Impacted a marsh after descending from cruise flight [NTSB: CEN19FA095](#)

- 3-8-19 – Richards Heavylift Helo UH-1B, N64RA, Forks, WA, Part 133, 1 Fatal
 - External load, long line logging operation
 - Crashed at logging site under unknown circumstances [NTSB: WPR19FA091](#)

- 3-5-19 – MDHI 369D, N89ZC, Talking Rock, GA, Part 133, 1 Fatal
 - External load; 10 bladed aerial saw attached to trim trees near power lines
 - Crashed after performing a tree trimming pass [NTSB: ERA19FA118](#)

FY 19 – U.S. Registered Fatal Rotorcraft Accidents

- 1-29-19 – Bell 407, N191SF, Zaleski, OH, Part 135, 3 Fatal
 - Helicopter Air Ambulance; enroute Pomeroy, OH for patient pick up
 - Crashed in heavily wooded area [NTSB: CEN19FA072](#)

- 1-24-19 – Bell 206L3, N8227J, Ashland, OR, Part 91, 1 Fatal
 - Training flight to build flight time
 - Collided with trees while maneuvering at low altitude [NTSB: WPR19LA071](#)

- 11-16-18 – Bell OH-58C, N510CP, Clanton, AL, Part 91, 2 Fatal
 - Law enforcement, positioning flight from Columbus, GA to Auburn, AL
 - Struck powerlines and impacted the Coosa River [NTSB: ERA19FA047](#)

- 11-4-18 – Bell 206B, N417WT, Uvalde, TX, Part 91, 3 Fatal
 - Personal use; night flight departed private ranch en route to San Antonio
 - Collided with 1,450 foot hill about 5 miles from ranch [NTSB: CEN19FA024](#)

FY 19 – U.S. Registered Fatal Rotorcraft Accidents

- 11-2-18 – MDHI 369D, N5187S, McDougal, AR, Part 133, 1 Fatal, 2 Minor
 - Utilities Patrol/Construction; utility line work w/2 linemen attached
 - Impacted a utility pole and crashed [NTSB: CEN19FA020](#)

- 10-30-18 – Airbus Helicopter AS355F2, N372CA, Beekmantown, NY, Part 133, 2 Fatal, 2 Serious
 - Utilities Patrol/Construction; stringing fiber optic line along existing power lines
 - Contacted lines, became entangled, fire ensued [NTSB: ERA19FA035](#)

- 10-29-18 – Airbus Helicopter AS350B3, N910S, Odanah, WI, Part 91, 1 Fatal
 - Utilities Patrol/Construction; oil and gas aerial pipeline patrol
 - Crashed under unknown circumstances, post-crash fire [NTSB: CEN19FA018](#)

- 10-17-18 – Robinson R22, N923SH, Fulton, MO, Part 91, 1 Fatal
 - Instructional/Training; Solo cross country flight to Columbia, MO
 - Crashed while enroute [NTSB: CEN19FA009](#)

FY 19 – U.S. Registered Fatal Rotorcraft Accidents Occurring Outside the U.S.

- 5-21-19 – Bell 206B, N9956K, Puerto Plata, Dominican Republic, 3 Fatal
– Crashed under unknown circumstances NTSB: ERA19WA176
- 11-22-18 – Airbus Helicopter EC120B, N124ML, La Romana, Dominican Republic, 5 Fatal
– Crashed under unknown circumstances [NTSB: ERA19WA054](#)

FY 19 - US Rotorcraft Accidents By Model

MFR	Model	Registered U.S. Fleet Size	Percentage of Total U.S. Fleet	Number of FY19 U.S. Registered Accidents	Percentage of Total FY19 U.S. Registered Accidents
Airbus Helicopters	AS350 (H125)	891	7%	7	8%
	AS355	45	< 1%	1	1%
	BK117 (H145)	219	2%	1	1%
	EC120 (H120)	95	1%	1	1%
	EC130 (H130)	260	2%		
	EC135 (H135)	325	3%		

Only models that comprise at least 1% of U.S. registered rotorcraft are listed unless an accident has occurred.

*Fleet size based on analysis of rotorcraft on FAA registry as of May 2019

FY 19 - US Rotorcraft Accidents By Model

MFR	Model	Registered U.S. Fleet Size	Percentage of Total U.S. Fleet	Number of FY19 U.S. Registered Accidents	Percentage of Total FY19 U.S. Registered Accidents
Bell	206Bs	956	8%	7	8%
	206Ls	573	5%	4	5%
	212	87	1%		
	222	23	< 1%	1	1%
	407	754	6%	3	3%
	412	94	1%		
	429	95	1%		
	430	31	< 1%	1	1%

Only models that comprise at least 1% of U.S. registered rotorcraft are listed unless an accident has occurred.

*Fleet size based on analysis of rotorcraft on FAA registry as of May 2019

FY 19 - US Rotorcraft Accidents By Model

MFR	Model	Registered U.S. Fleet Size	Percentage of Total U.S. Fleet	Number of FY19 U.S. Registered Accidents	Percentage of Total FY19 U.S. Registered Accidents
Robinson	R-22	869	7%	10	12%
	R-44	1,634	13%	18	21%
	R-66	272	2%	1	1%

Only models that comprise at least 1% of U.S. registered rotorcraft are listed unless an accident has occurred.

*Fleet size based on analysis of rotorcraft on FAA registry as of May 2019

FY 19 - US Rotorcraft Accidents By Model

MFR	Model	Registered U.S. Fleet Size	Percentage of Total U.S. Fleet	Number of FY19 U.S. Registered Accidents	Percentage of Total FY19 U.S. Registered Accidents
Sikorsky	S-76	233	2%	1	1%
	S-92	81	1%		

Only models that comprise at least 1% of U.S. registered rotorcraft are listed unless an accident has occurred.

*Fleet size based on analysis of rotorcraft on FAA registry as of May 2019

FY 19 - US Rotorcraft Accidents By Model

MFR	Model	Registered U.S. Fleet Size	Percentage of Total U.S. Fleet	Number of FY19 U.S. Registered Accidents	Percentage of Total FY19 U.S. Registered Accidents
Brantly	B-2	63	1%		
Enstrom	280	124	1%		
	480	63	1%		
	F28	159	1%	1	1%
Erickson	S-64E	26	< 1%	1	1%
Helicopteres Guimbal	Cabri G2	31	< 1%	4	5%
Hiller	UH-12/H-23	291	2%		
Leonardo (formerly Agusta Westland)	A109	167	1%	2	2%
	A119	93	1%		
	AW139	122	1%		
MDHI	369	726	6%	6	7%
Restricted Category (all TCs)	HH-1/TH-1/UH-1	546	4%	3	3%
	H-19	61	< 1%	1	1%
	OH-58	414	3%	5	6%
Schweizer Rotorcraft Services Group	269/300/TH-55	419	3%	3	3%
Scott's Bell	47	597	5%	4	5%

Only models that comprise at least 1% of U.S. registered rotorcraft are listed unless an accident has occurred.

*Fleet size based on analysis of rotorcraft on FAA registry as of May 2019

U.S. Helicopter Safety Team (USHST) Fatal Accident Rate (Jan - Jun 2019)

