



**Federal Aviation
Administration**

Rotorcraft Standards Branch

AIR-680

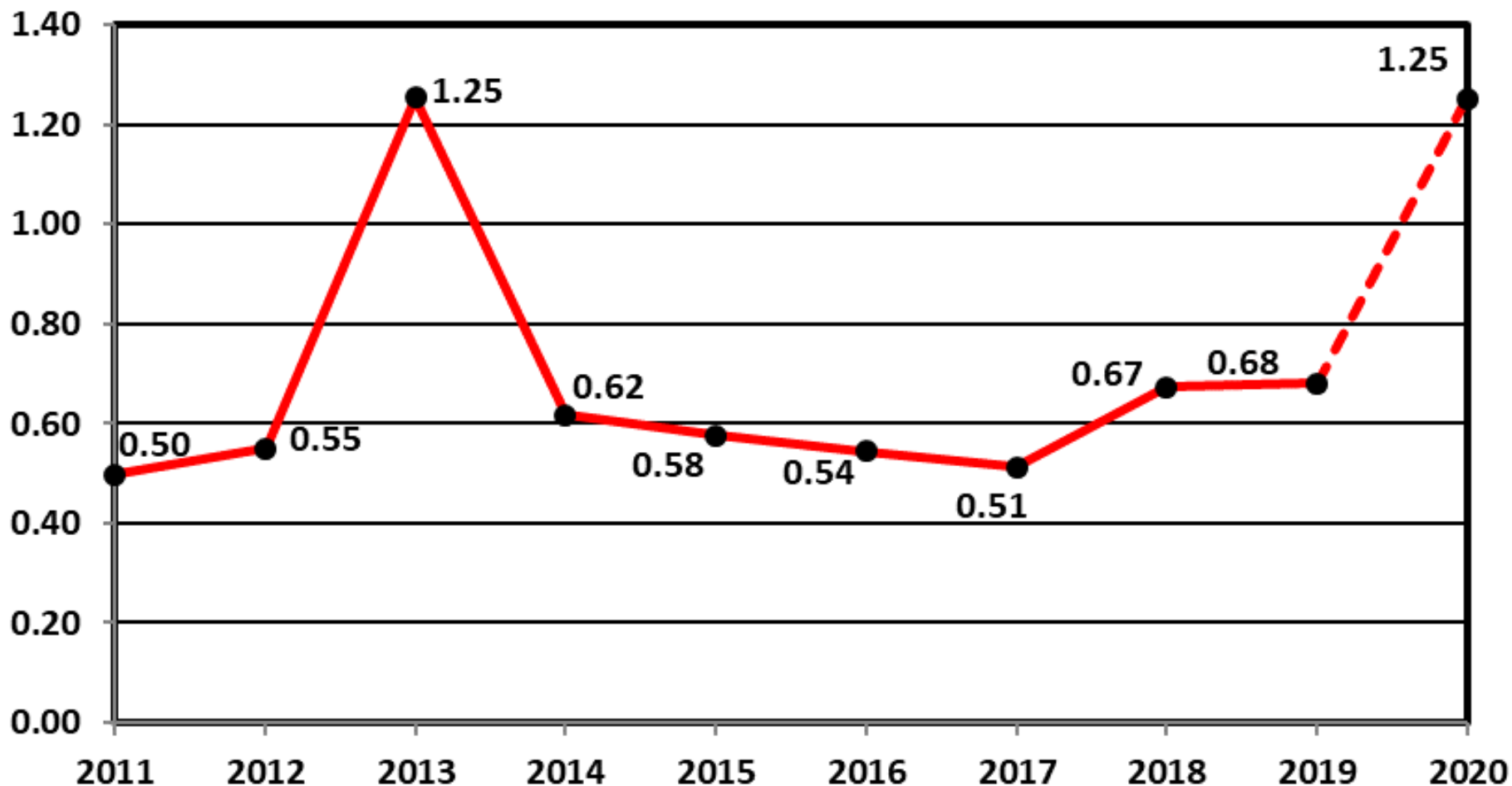
Monthly Accident Briefing

Oct 2019

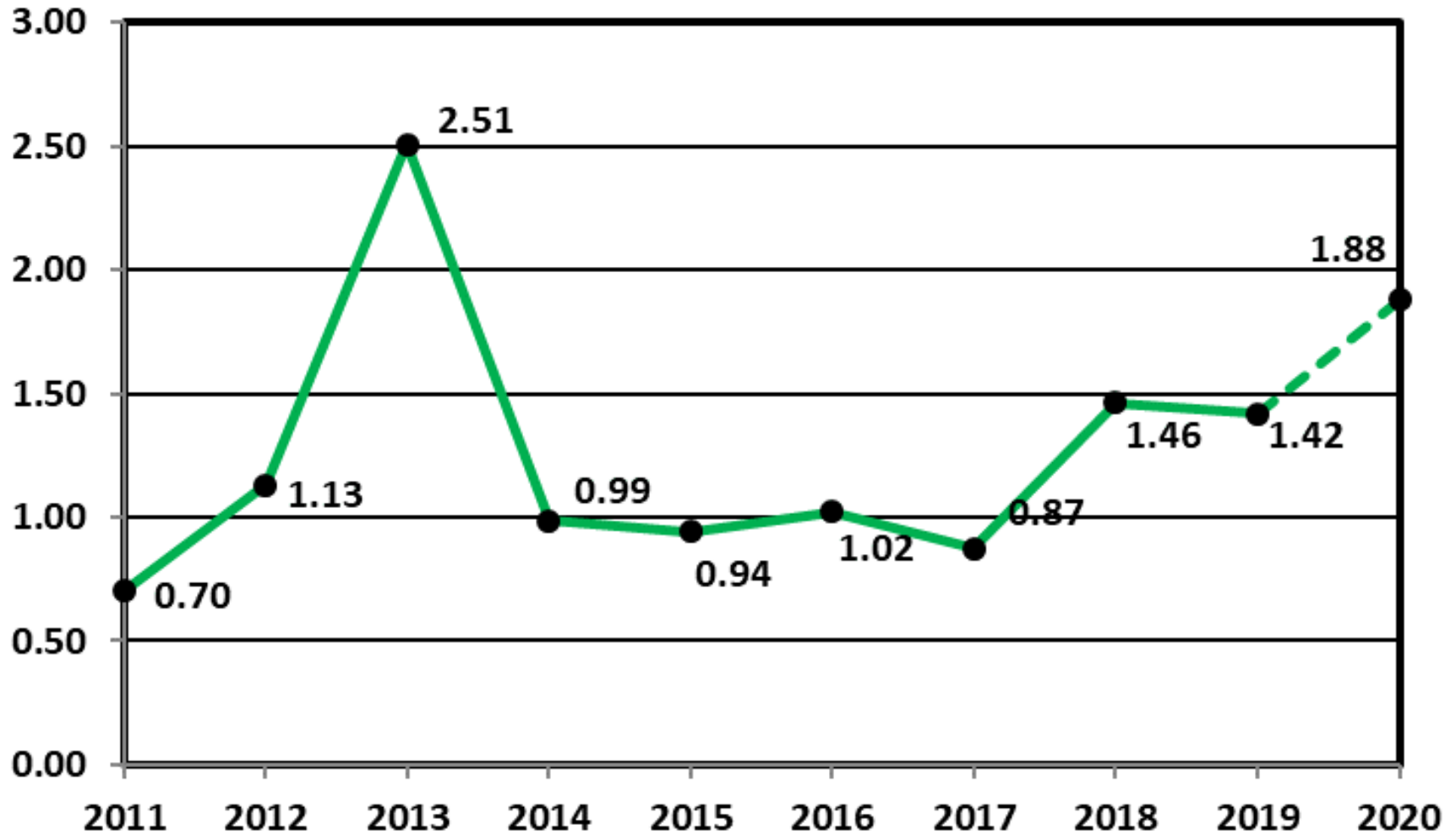
**By: AIR-682, Safety Management Section,
Rotorcraft Standards Branch**



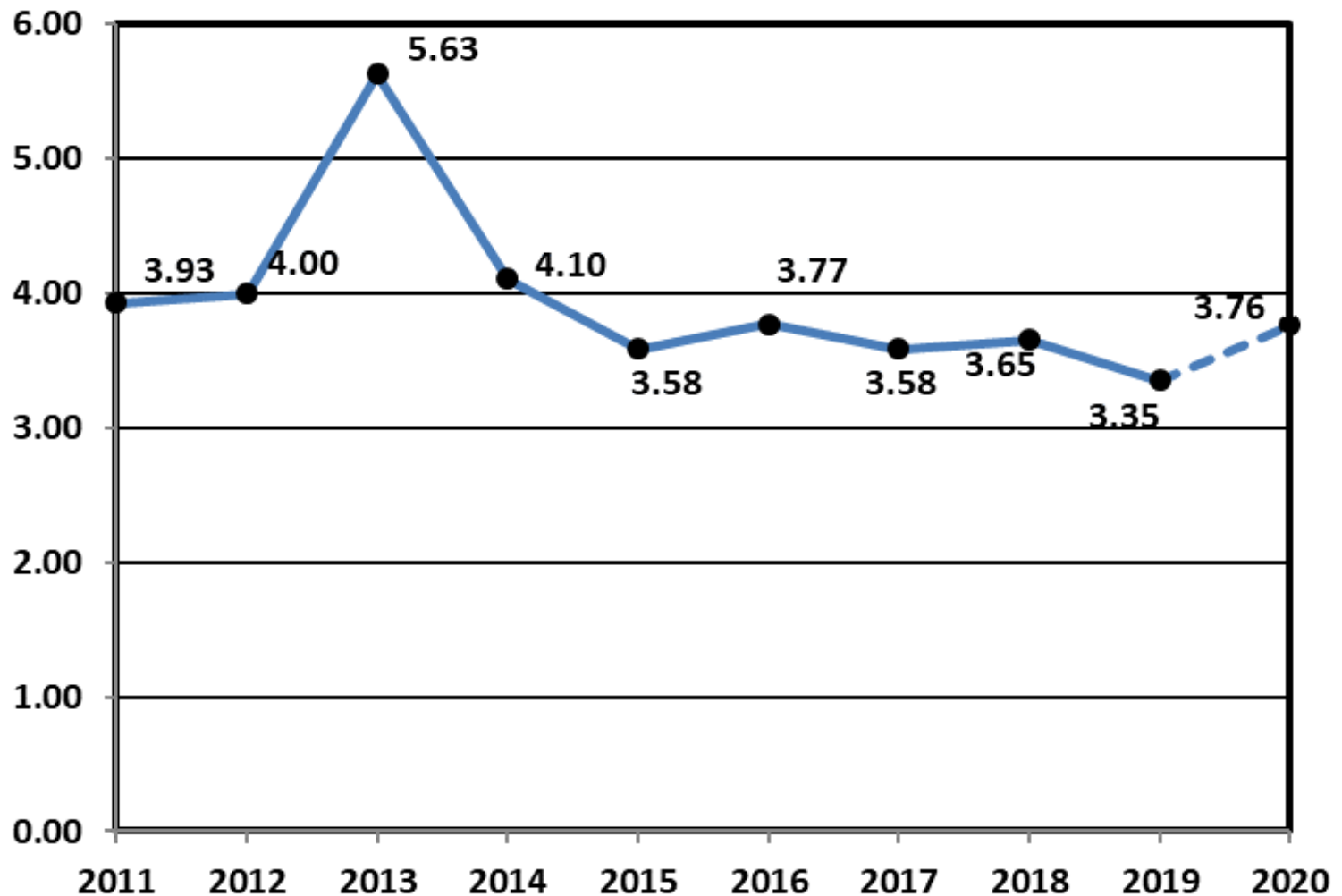
Estimated U.S. Rotorcraft FATAL Accident Rate (per 100,000 hours) – 10 Year Lookback



Estimated U.S. Rotorcraft Fatality Rate (per 100,000 hours) – 10 Year Lookback



Estimated U.S. Rotorcraft Accident Rate (per 100,000 hours) – 10 Year Lookback



FY 19 – U.S. Registered Rotorcraft Event Counts

	Oct	Nov	Dec	Jan	Feb	Mar	Apr	May	Jun	Jul	Aug	Sep	YTD
Accidents:	12												12
Fatal Acc:	4												4
Fatalities:	6												6

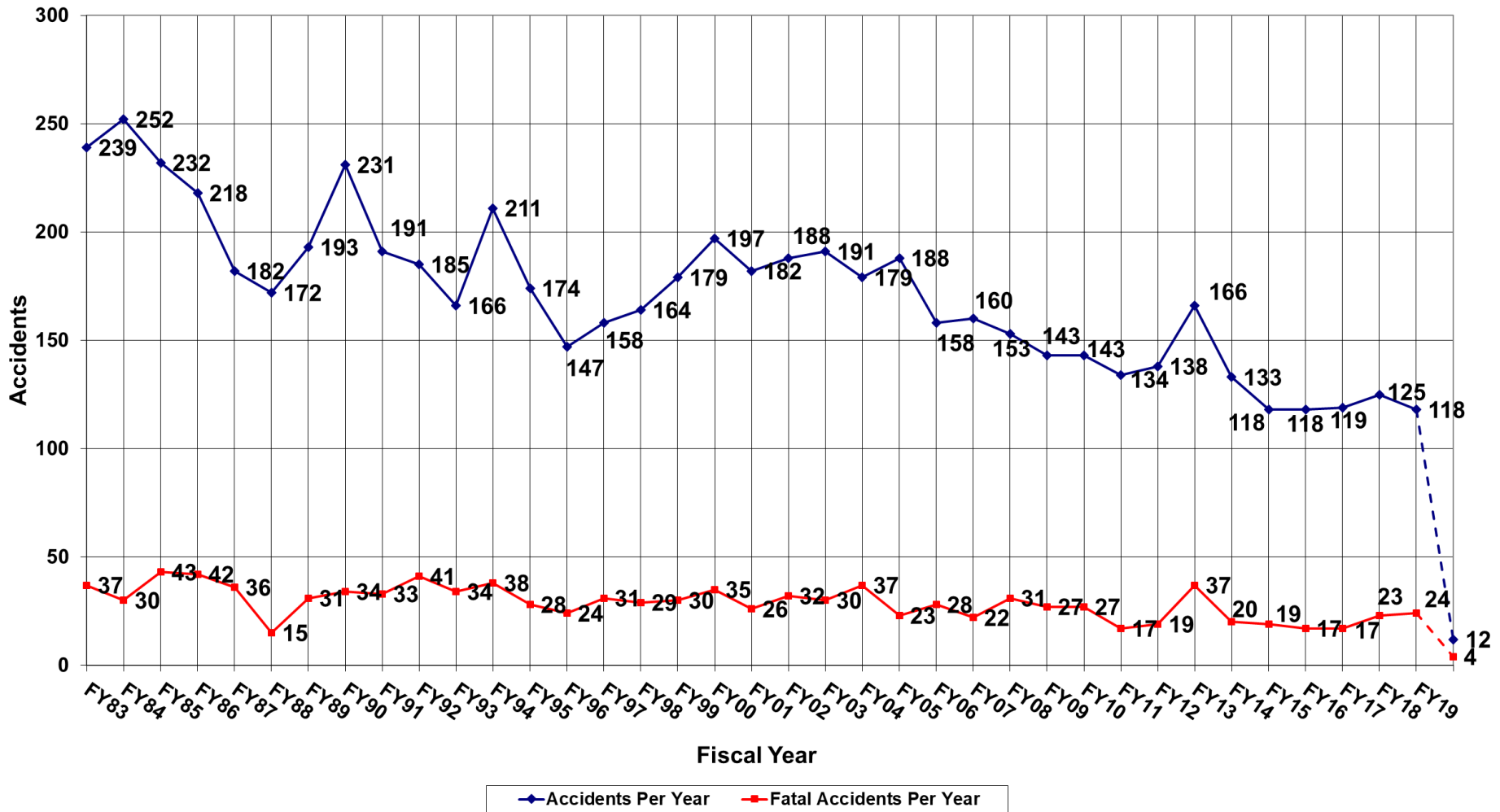
Same time period, previous FY: 8 Accidents, 3 Fatal Accidents, 4 Fatalities

Data Source: FAA, NTSB Databases. Includes only events classified as accidents and does not include incidents. The accident numbers for each month of the Fiscal Year may vary from the previous monthly briefing based on analysis between FAA and NTSB databases for the specified month. The NTSB database may include accidents that were not reported to this office resulting in slightly different numbers.

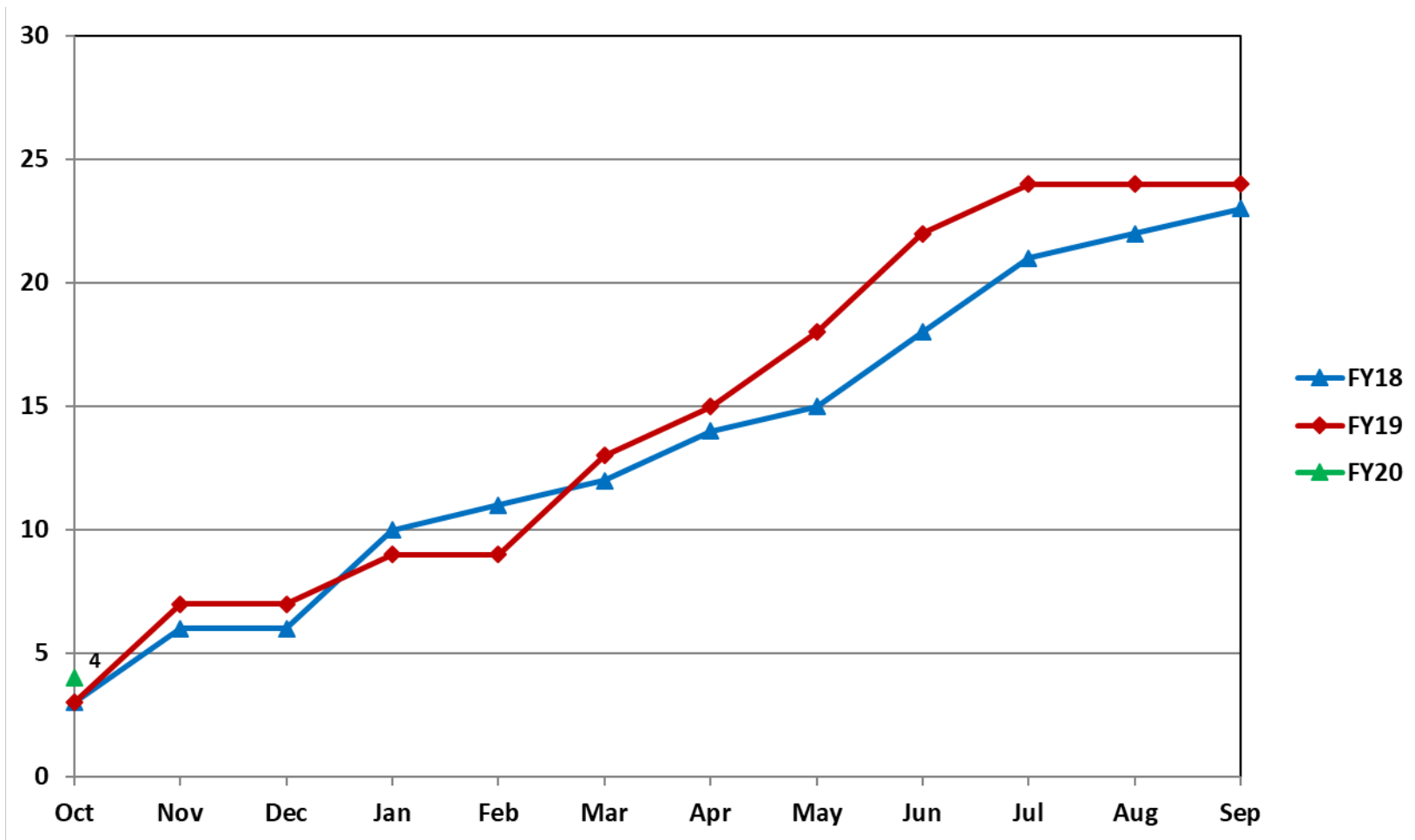
Estimated Rates by Month (per 100,000 flight hours)

	Oct	Nov	Dec	Jan	Feb	Mar	Apr	May	Jun	Jul	Aug	Sep	YTD
Accidents:	3.76												3.76
Fatal Acc:	1.25												1.25
Fatalities:	1.88												1.88

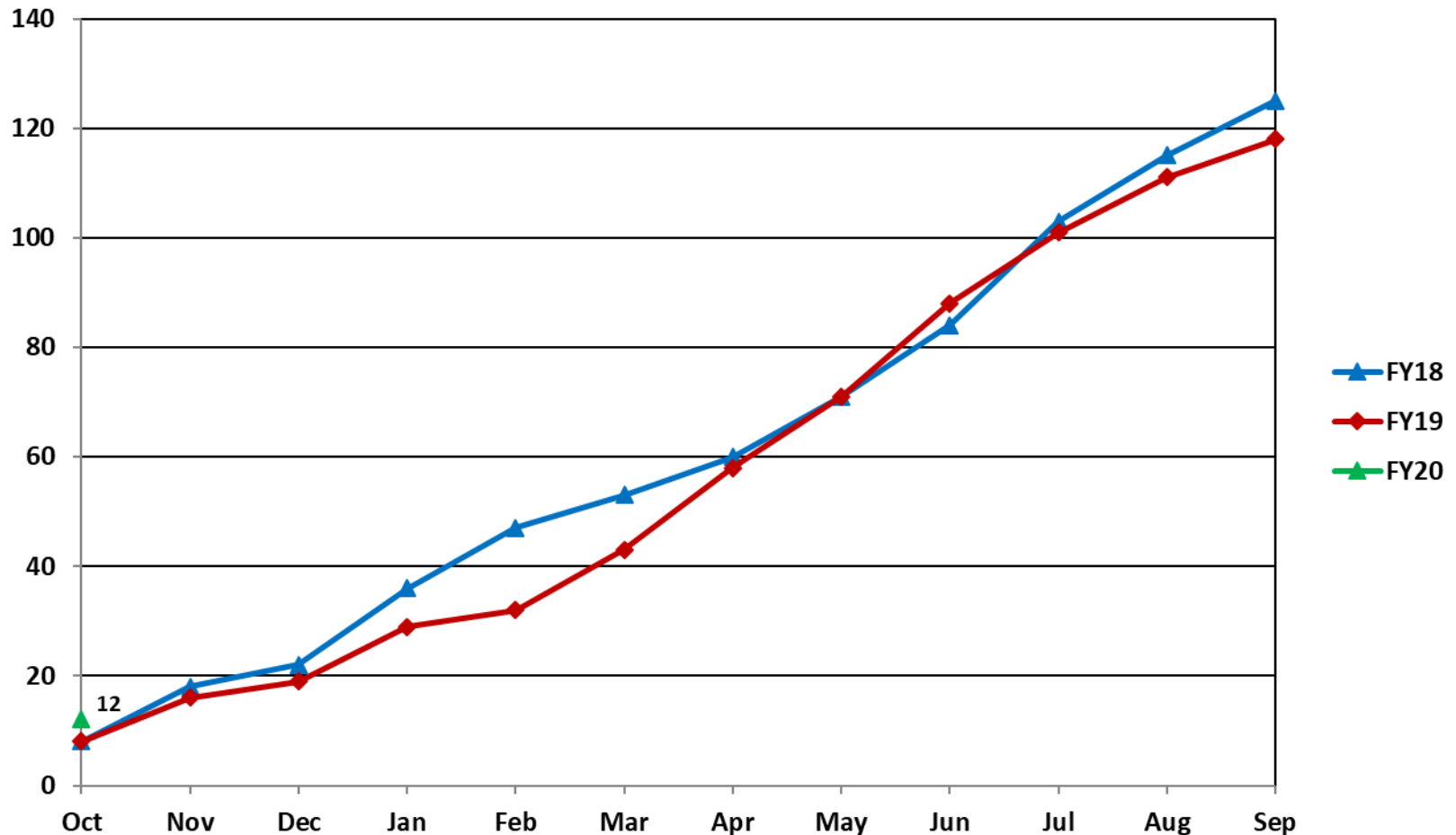
U.S. Registered Rotorcraft Accidents FY83 - FY20



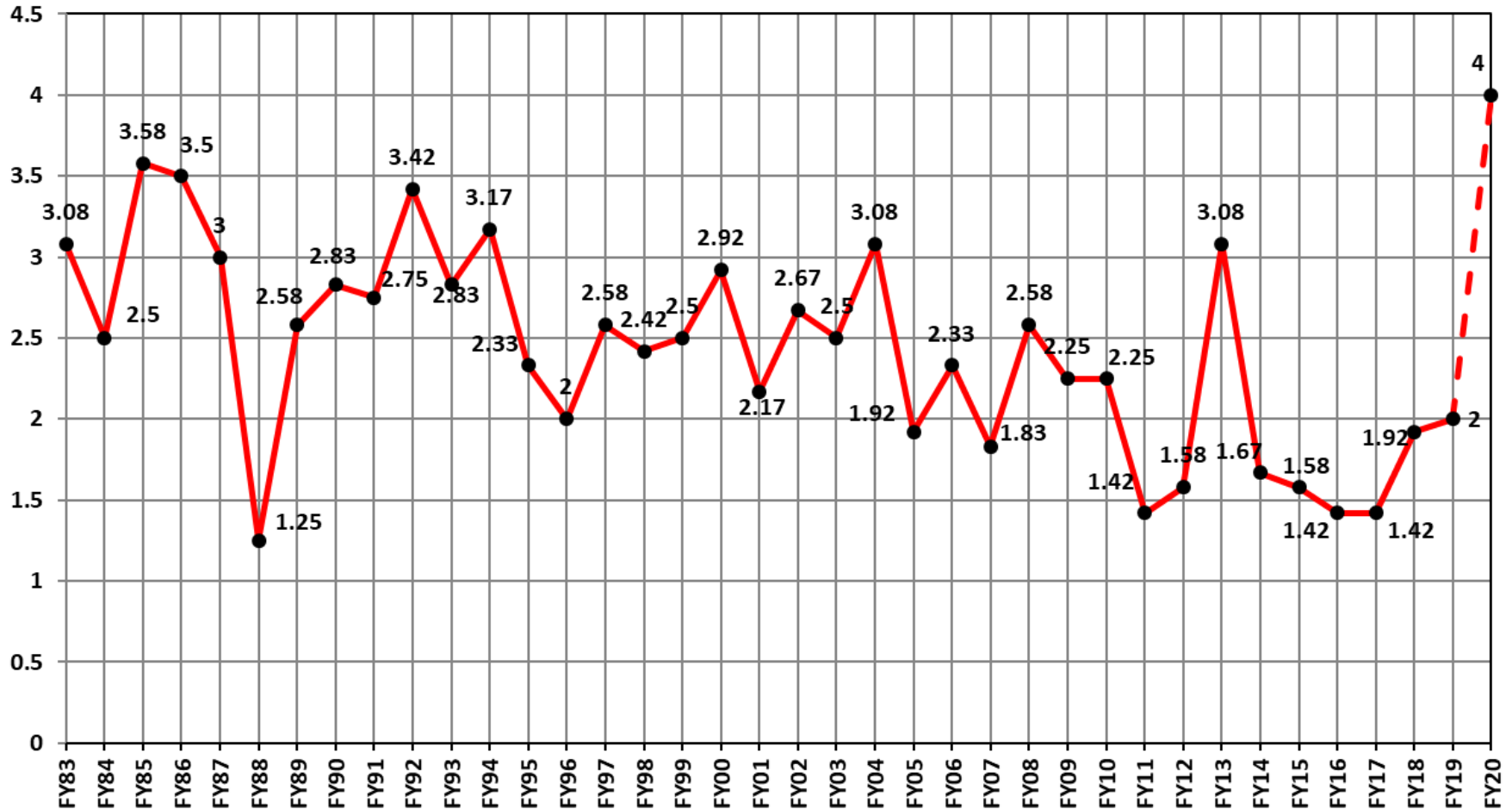
U.S. Registered Rotorcraft Cumulative Fatal Accident Count: FY18 - 20



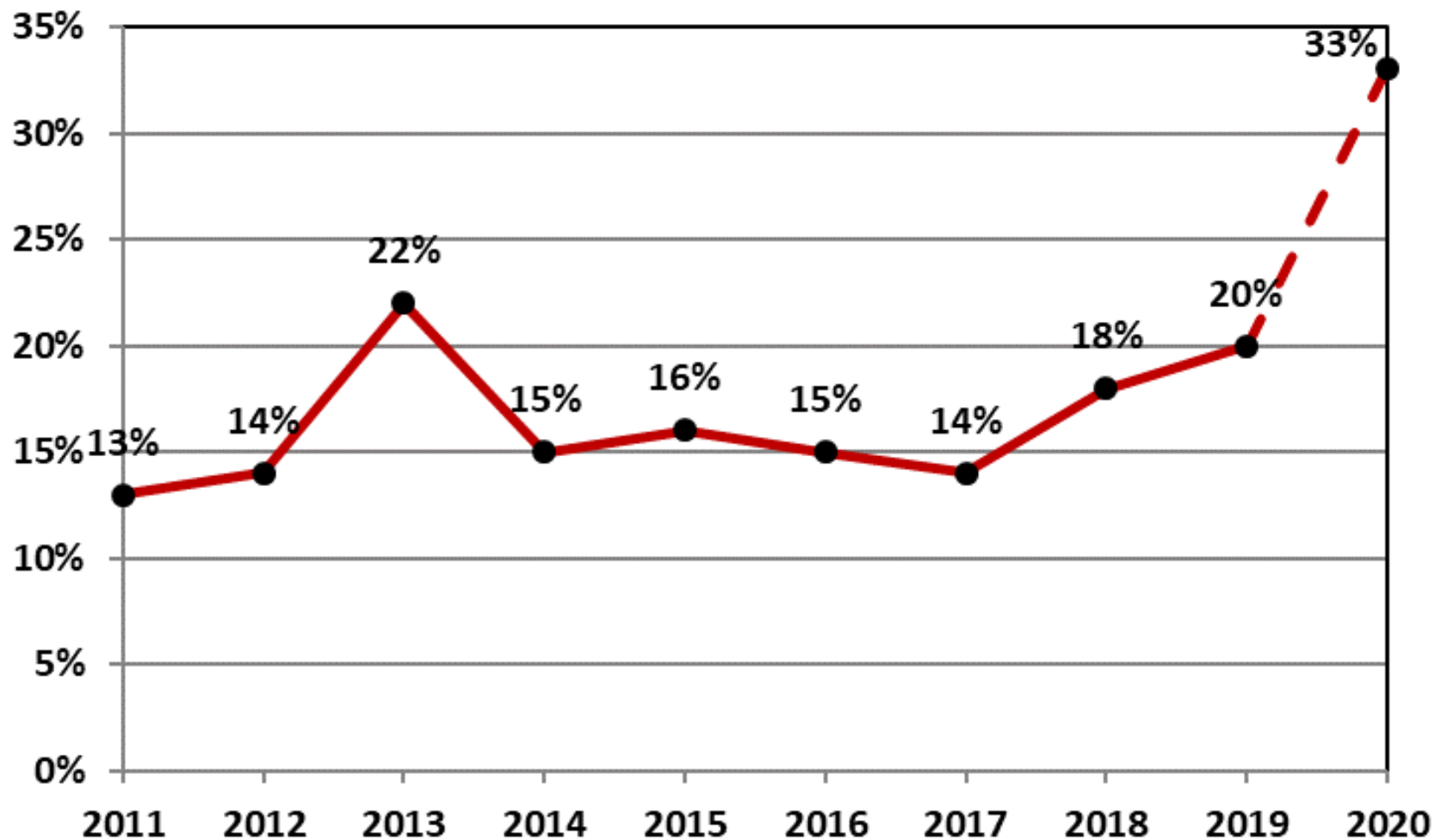
U.S. Registered Rotorcraft Cumulative Accident Count: FY18 - 20



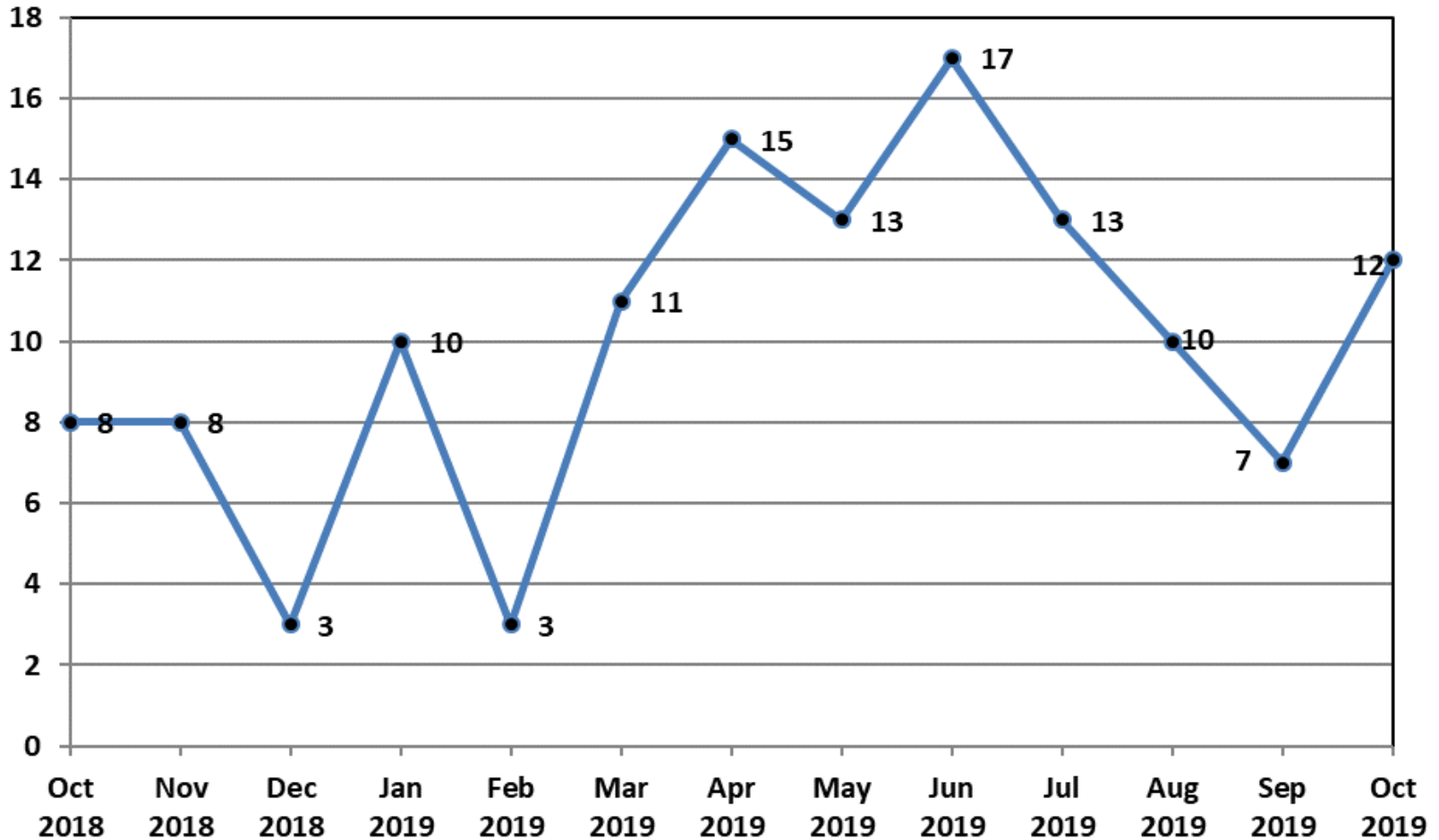
U.S. Registered Rotorcraft Average Fatal Accidents Per Month, FY83-FY20



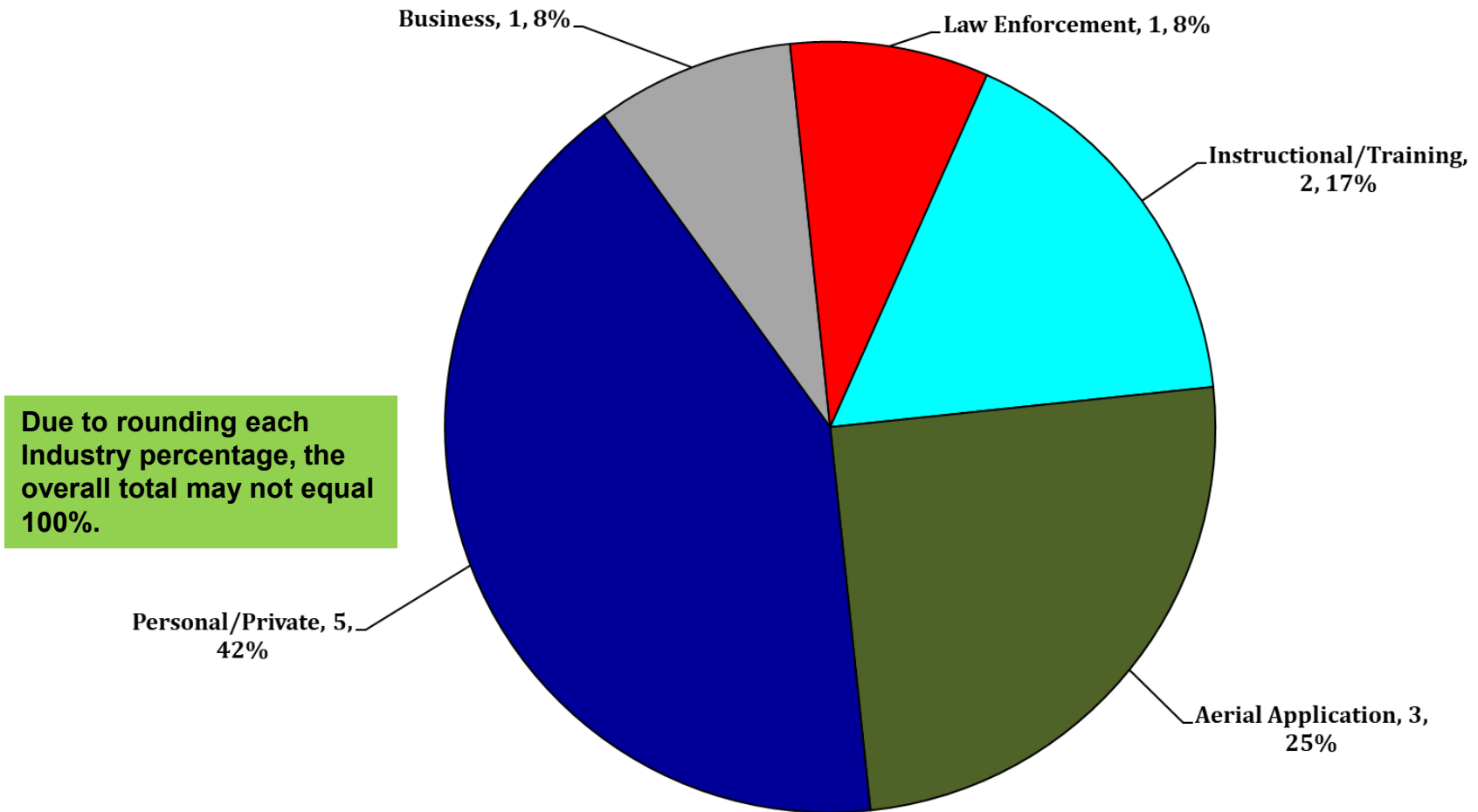
% of U.S. Rotorcraft Accidents with a Fatality (FY20, Oct 2019)



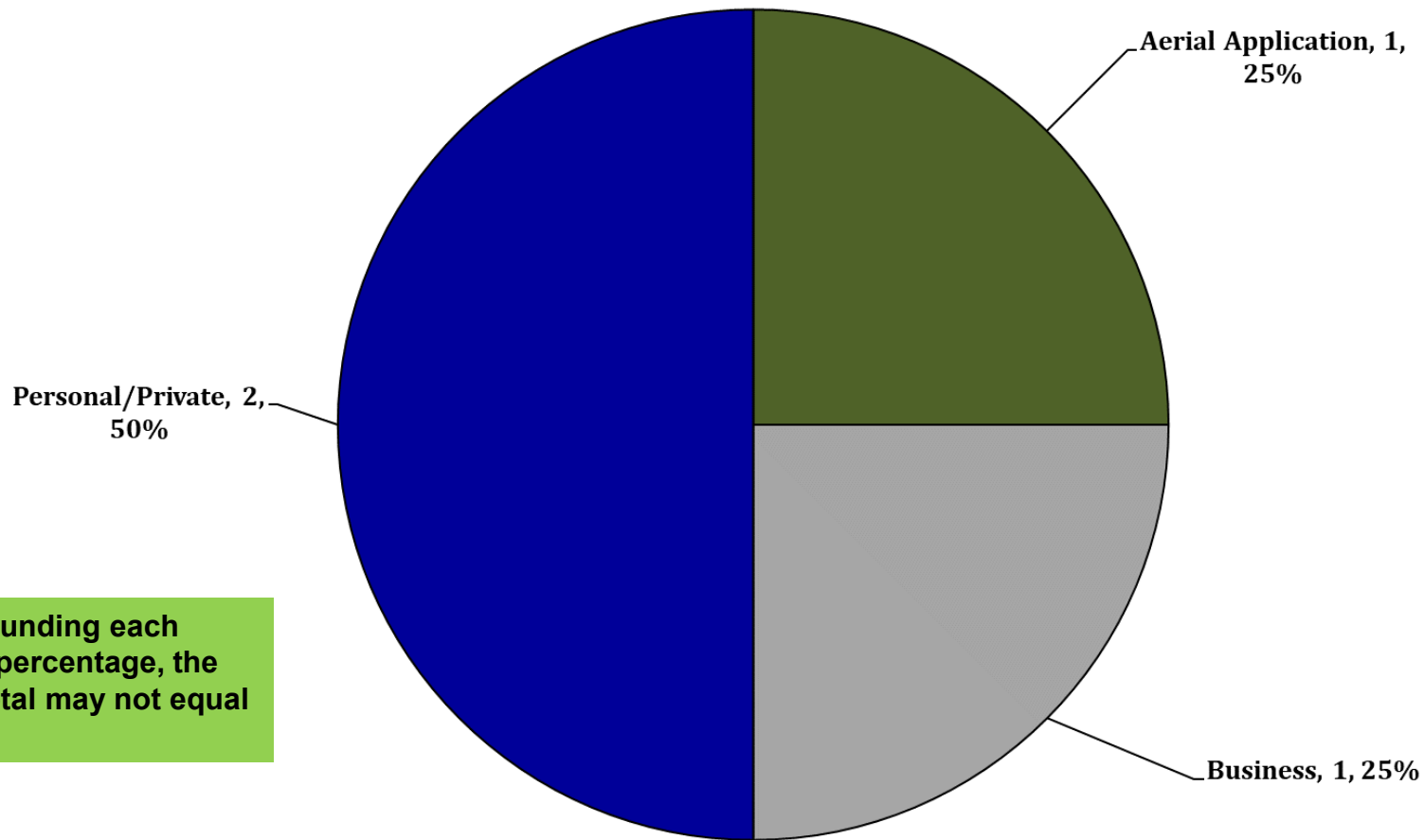
U.S. Registered Rotorcraft 13 Month Rolling Accident Count



FY 20 – Total Accidents by Industry (Oct 2019)



FY 20 – Total FATAL Accidents by Industry (Oct 2019)



FY 20 – U.S. Registered Fatal Rotorcraft Accidents

- 10-25-19 – Enstrom 280F, N280F, Adrian, OR, Part 91, 1 fatal, 1 serious
 - Personal use flight; crashed, unknown circumstances NTSB: WPR20FA016
- 10-23-19 – Robinson R44, N225JM, Las Vegas, NV, Part 91, 2 fatal
 - Personal use flight; impacted near Red Rock Recreation Visitor Center
 - No further details NTSB: WPR20FA013
- 10-23-19 – Robinson R22, N7189D, Hebronville, TX, Part 91, 2 fatal
 - Two R22s on business flight to spot and capture wildlife
 - Collided mid-air while operating 50-100' ft AGL [NTSB: CEN20FA012A](#)
- 10-17-19 – Bell 206B, N167AG, New Salem, NC, Part 137, 1 fatal
 - Aerial application flight; 22nd aerial application of the day
 - Struck power lines then impacted terrain [NTSB: ERA20FA012](#)

FY 19 - US Rotorcraft Accidents By Model

MFR	Model	Registered U.S. Fleet Size	Percentage of Total U.S. Fleet	Number of FY20 U.S. Registered Accidents	Percentage of Total FY20 U.S. Registered Accidents
Airbus Helicopters	AS350 (H125)	891	7%		
	AS355	45	< 1%		
	BK117 (H145)	219	2%		
	EC120 (H120)	95	1%		
	EC130 (H130)	260	2%		
	EC135 (H135)	325	3%		

Only models that comprise at least 1% of U.S. registered rotorcraft are listed unless an accident has occurred.

*Fleet size based on analysis of rotorcraft on FAA registry as of May 2019

FY 19 - US Rotorcraft Accidents By Model

MFR	Model	Registered U.S. Fleet Size	Percentage of Total U.S. Fleet	Number of FY20 U.S. Registered Accidents	Percentage of Total FY20 U.S. Registered Accidents
Bell	206Bs	956	8%	1	8%
	206Ls	573	5%		
	212	87	1%		
	222	23	< 1%		
	407	754	6%		
	412	94	1%		
	429	95	1%		
	430	31	< 1%		

Only models that comprise at least 1% of U.S. registered rotorcraft are listed unless an accident has occurred.

*Fleet size based on analysis of rotorcraft on FAA registry as of May 2019

FY 19 - US Rotorcraft Accidents By Model

MFR	Model	Registered U.S. Fleet Size	Percentage of Total U.S. Fleet	Number of FY20 U.S. Registered Accidents	Percentage of Total FY20 U.S. Registered Accidents
Robinson	R-22	869	7%	3	25%
	R-44	1,634	13%	2	17%
	R-66	272	2%	1	8%

Only models that comprise at least 1% of U.S. registered rotorcraft are listed unless an accident has occurred.

*Fleet size based on analysis of rotorcraft on FAA registry as of May 2019

FY 19 - US Rotorcraft Accidents By Model

MFR	Model	Registered U.S. Fleet Size	Percentage of Total U.S. Fleet	Number of FY20 U.S. Registered Accidents	Percentage of Total FY20 U.S. Registered Accidents
Sikorsky	S-76	233	2%		
	S-92	81	1%		

Only models that comprise at least 1% of U.S. registered rotorcraft are listed unless an accident has occurred.

*Fleet size based on analysis of rotorcraft on FAA registry as of May 2019

FY 19 - US Rotorcraft Accidents By Model

MFR	Model	Registered U.S. Fleet Size	Percentage of Total U.S. Fleet	Number of FY20 U.S. Registered Accidents	Percentage of Total FY20 U.S. Registered Accidents
Brantly	B-2	63	1%		
Enstrom	280	124	1%	1	8%
	480	63	1%		
	F28	159	1%	1	8%
Hiller	UH-12/H-23	291	2%	1	8%
Leonardo (formerly Agusta Westland)	A109	167	1%		
	A119	93	1%		
	AW139	122	1%		
MDHI	369	726	6%		
Restricted Category (all TCs)	HH-1/TH-1/UH-1	546	4%		
	OH-58	414	3%	1	8%
Schweizer Rotorcraft Services Group	269/300/TH-55	419	3%		
Scott's Bell	47	597	5%	1	8%

Only models that comprise at least 1% of U.S. registered rotorcraft are listed unless an accident has occurred.

*Fleet size based on analysis of rotorcraft on FAA registry as of May 2019

U.S. Helicopter Safety Team (USHST) Fatal Accident Rate (Jan - Oct 2019)

