



**Federal Aviation  
Administration**

# **Rotorcraft Standards Branch AIR-680**

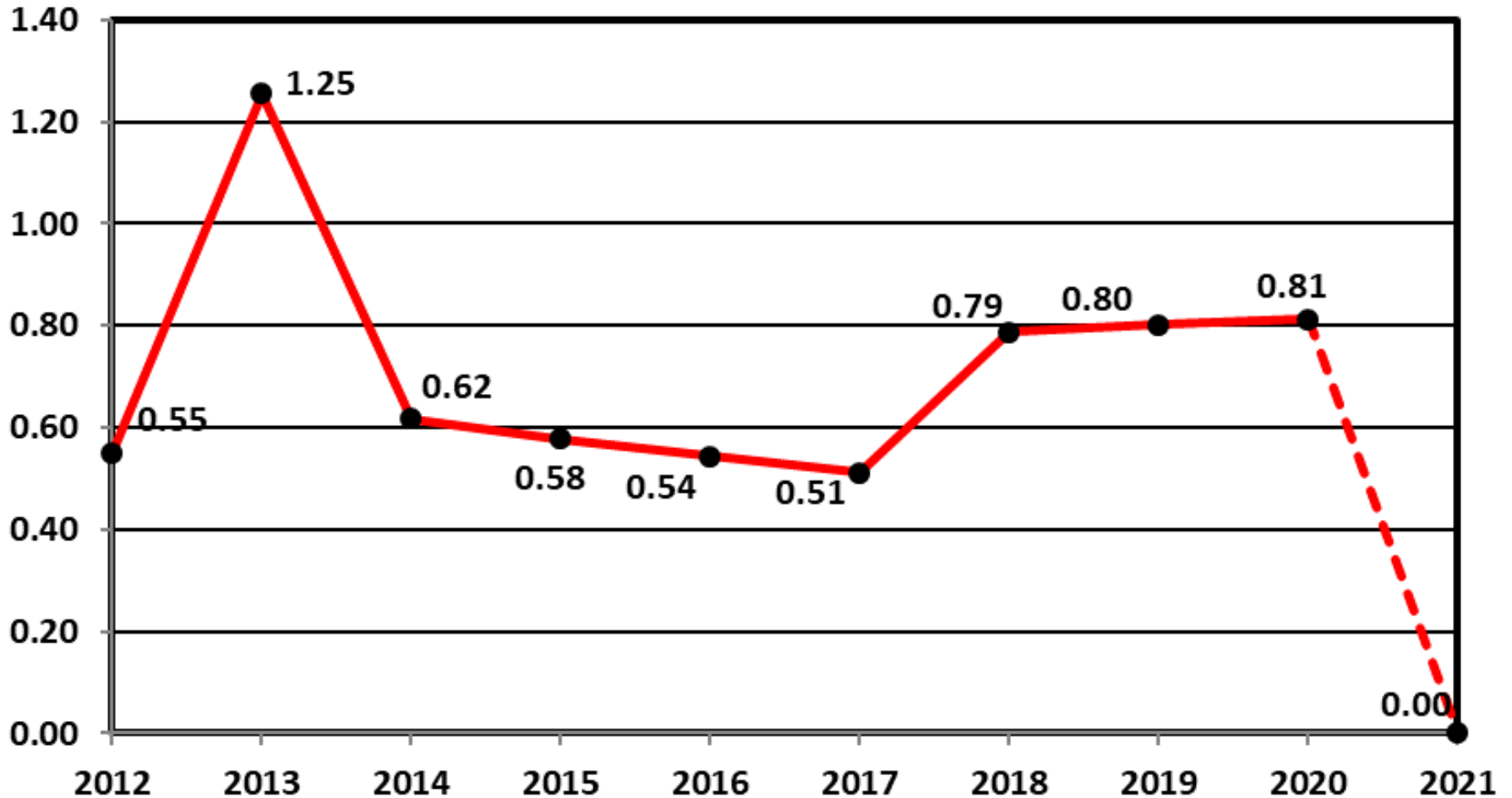
## **Monthly Accident Briefing**

**October 2020**

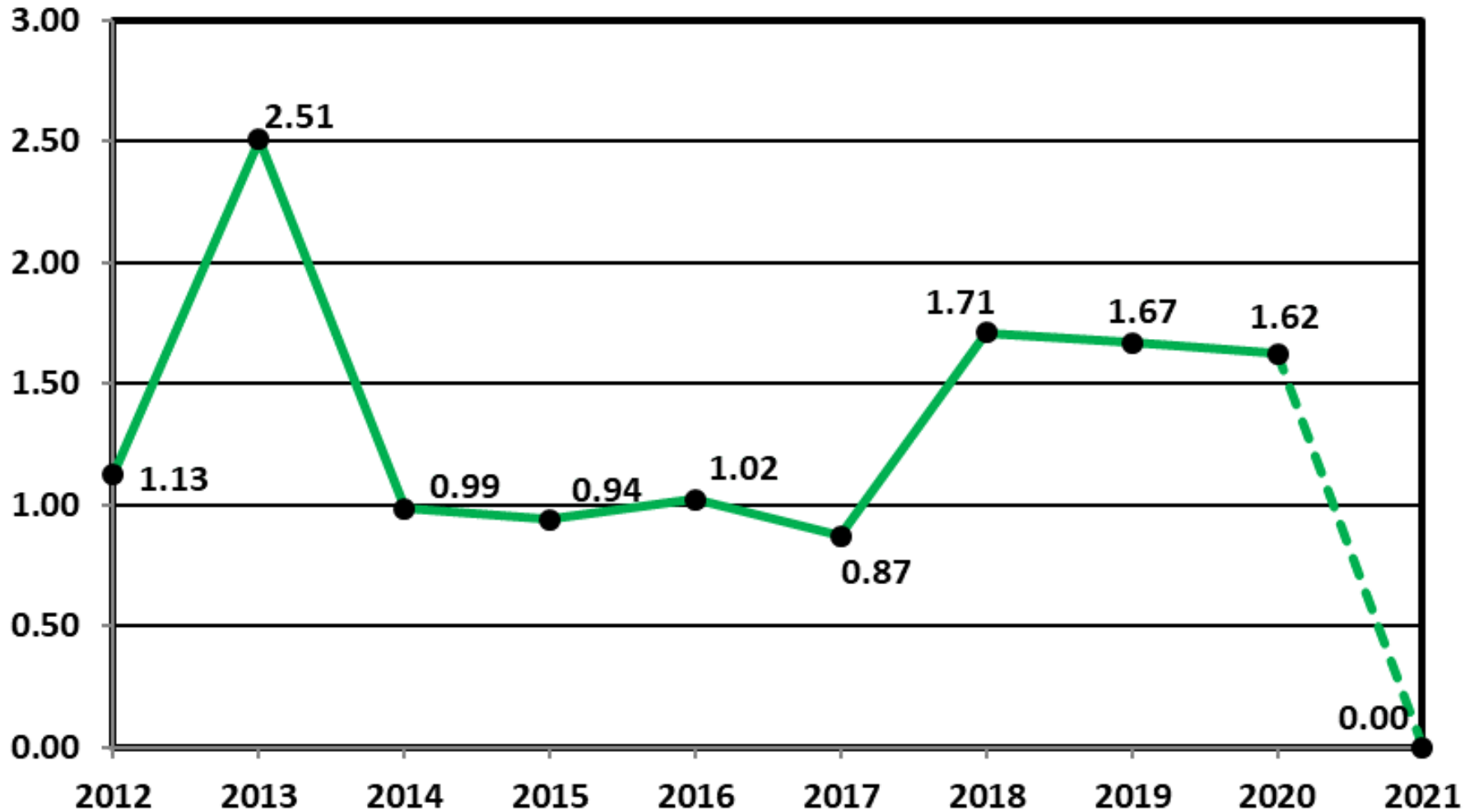
**By: AIR-682, Safety Management Section,  
Rotorcraft Standards Branch**



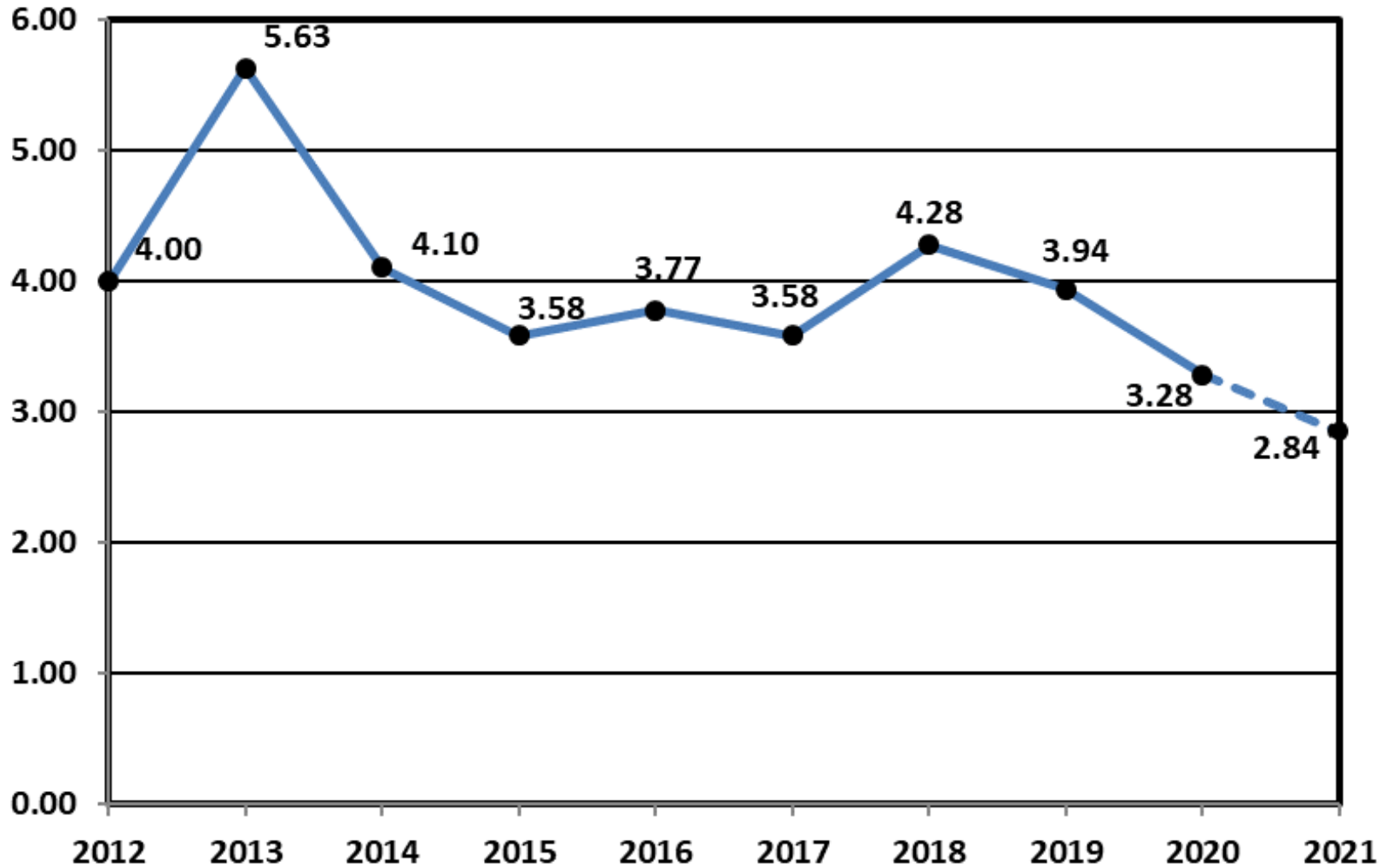
# Estimated U.S. Rotorcraft FATAL Accident Rate by FY 10 Year Lookback – Rates per 100,000 Hours



# Estimated U.S. Rotorcraft Fatality Rate by FY 10 Year Lookback – Rates per 100,000 Hours



# Estimated U.S. Rotorcraft Accident Rate by FY 10 Year Lookback – Rates per 100,000 Hours



# FY 21 – U.S. Registered Rotorcraft Event Counts

	Oct	Nov	Dec	Jan	Feb	Mar	Apr	May	Jun	Jul	Aug	Sep	YTD
<b>Accidents:</b>	8												
<b>Fatal Acc:</b>	0												
<b>Fatalities:</b>	0												

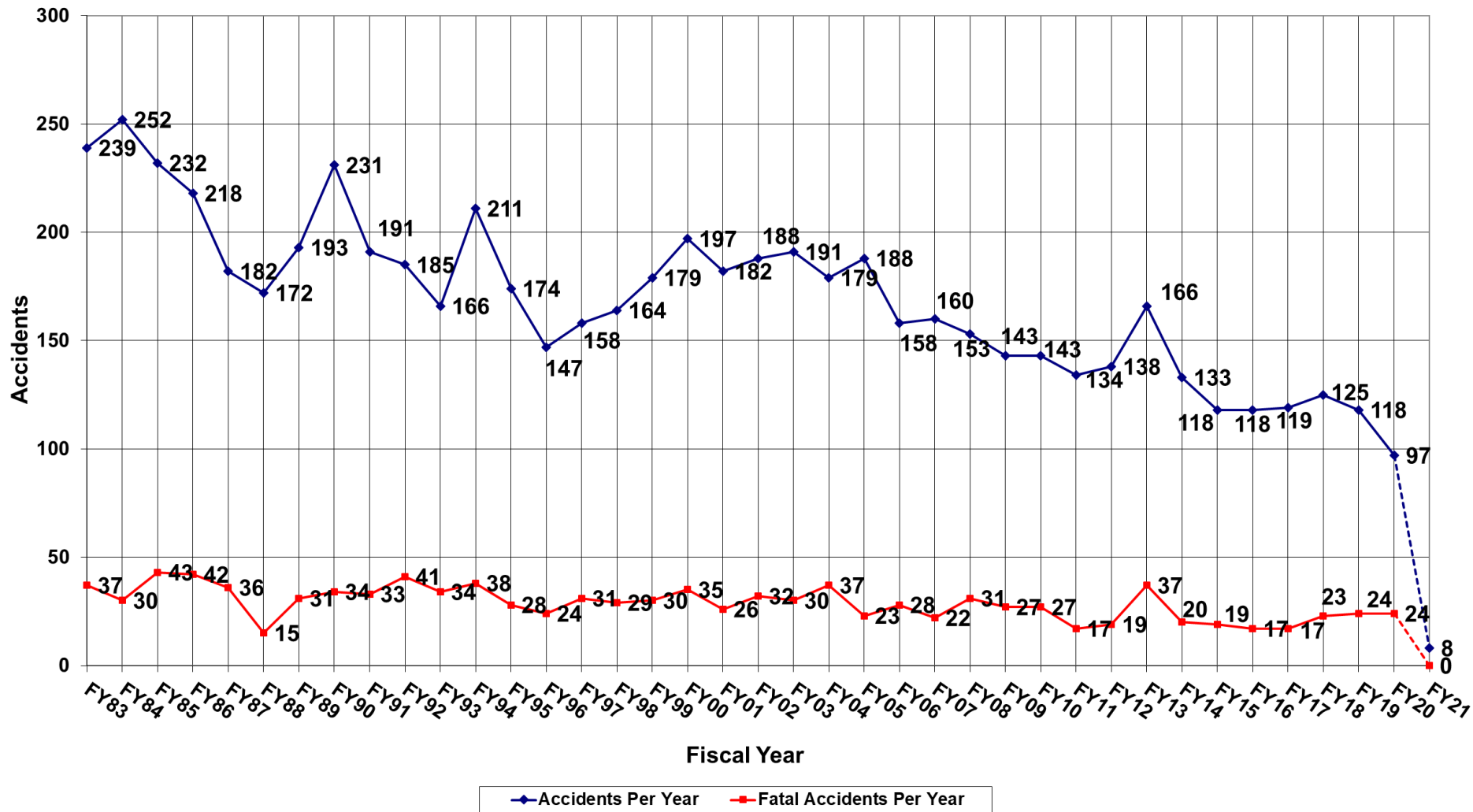
Same time period, previous FY: 11 Accidents, 4 Fatal Accidents, 6 Fatalities

Data Source: FAA, NTSB Databases. Includes only events classified as accidents and does not include incidents. The accident numbers for each month of the Fiscal Year may vary from the previous monthly briefing based on analysis between FAA and NTSB databases for the specified month. The NTSB database may include accidents that were not reported to this office resulting in slightly different numbers.

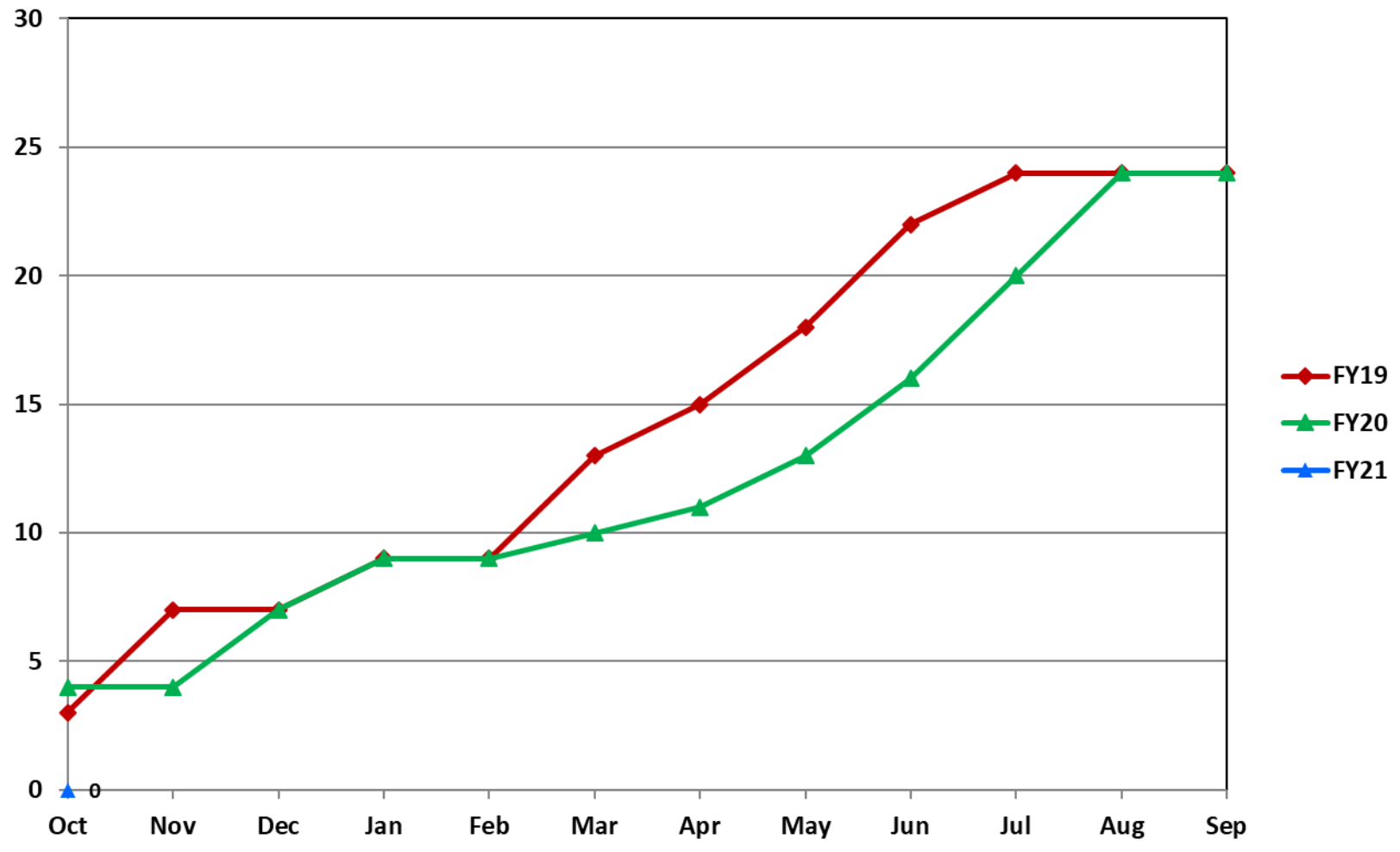
## Estimated Rates by Month (per 100,000 flight hours)

	Oct	Nov	Dec	Jan	Feb	Mar	Apr	May	Jun	Jul	Aug	Sep	YTD
<b>Accidents:</b>	2.84												2.84
<b>Fatal Acc:</b>	0												0
<b>Fatalities:</b>	0												0

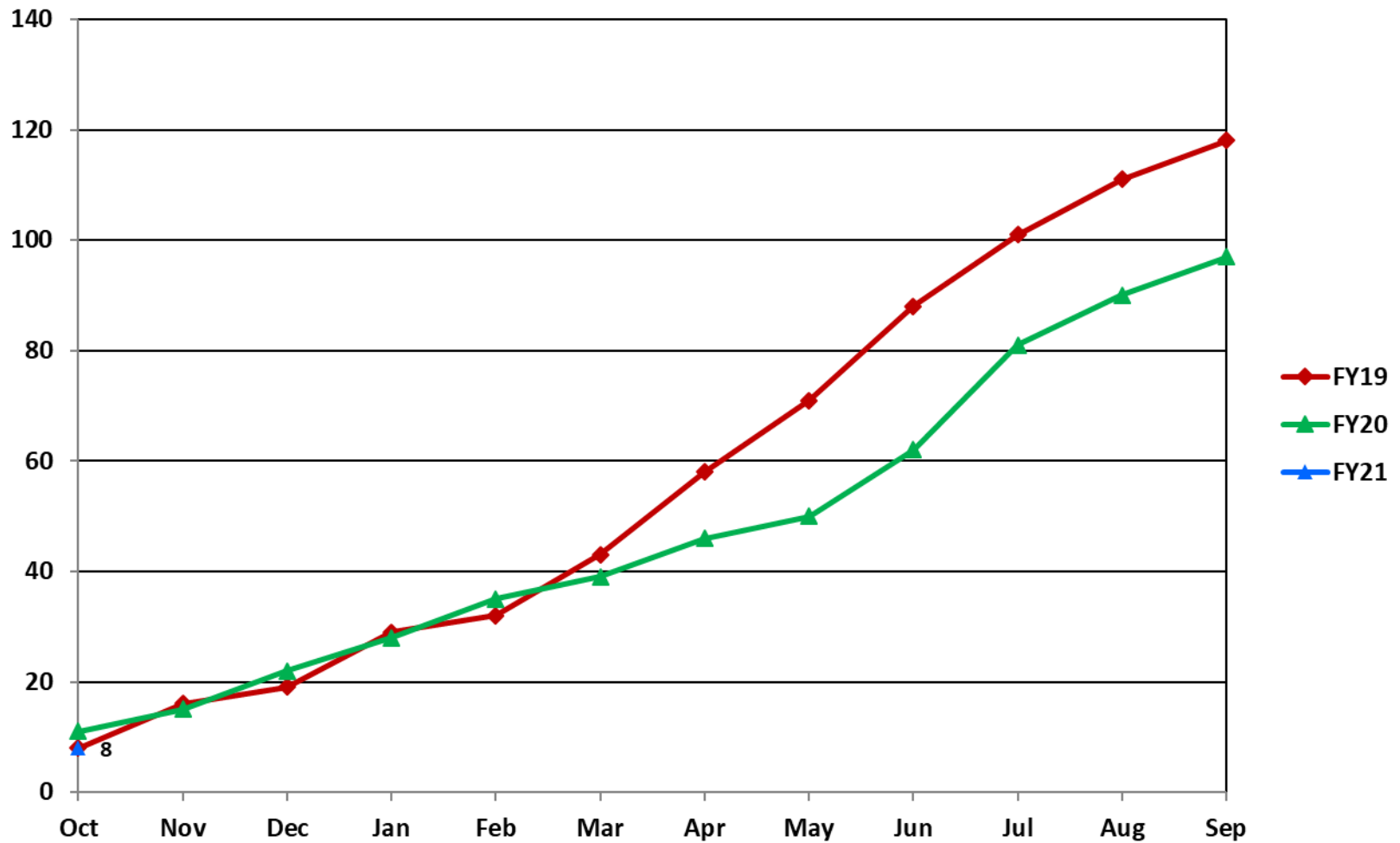
# U.S. Registered Rotorcraft Accidents FY83 - FY21



# U.S. Registered Rotorcraft Cumulative Fatal Accident Count: FY19 - 21

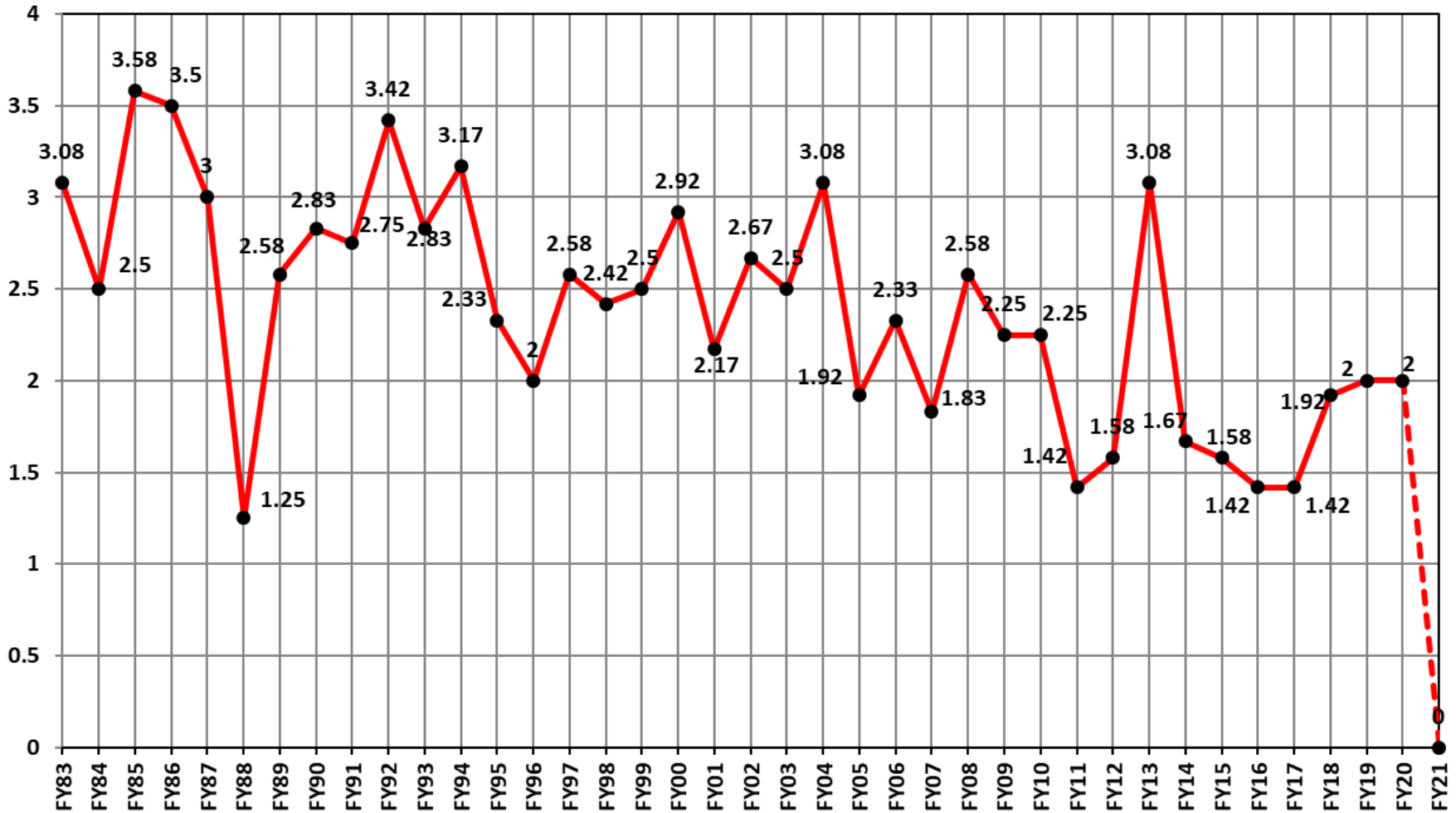


# U.S. Registered Rotorcraft Cumulative Accident Count: FY19 - 21

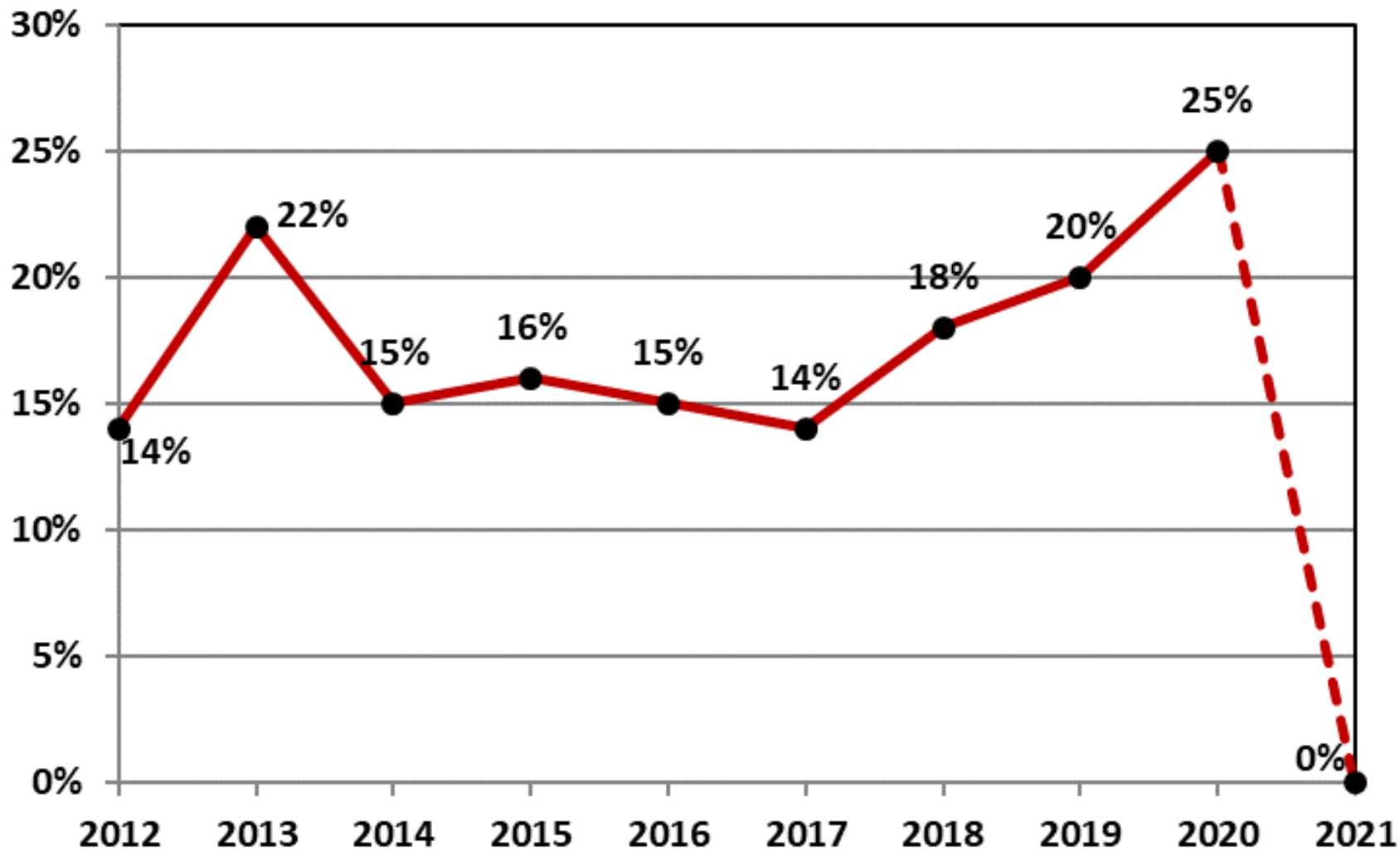




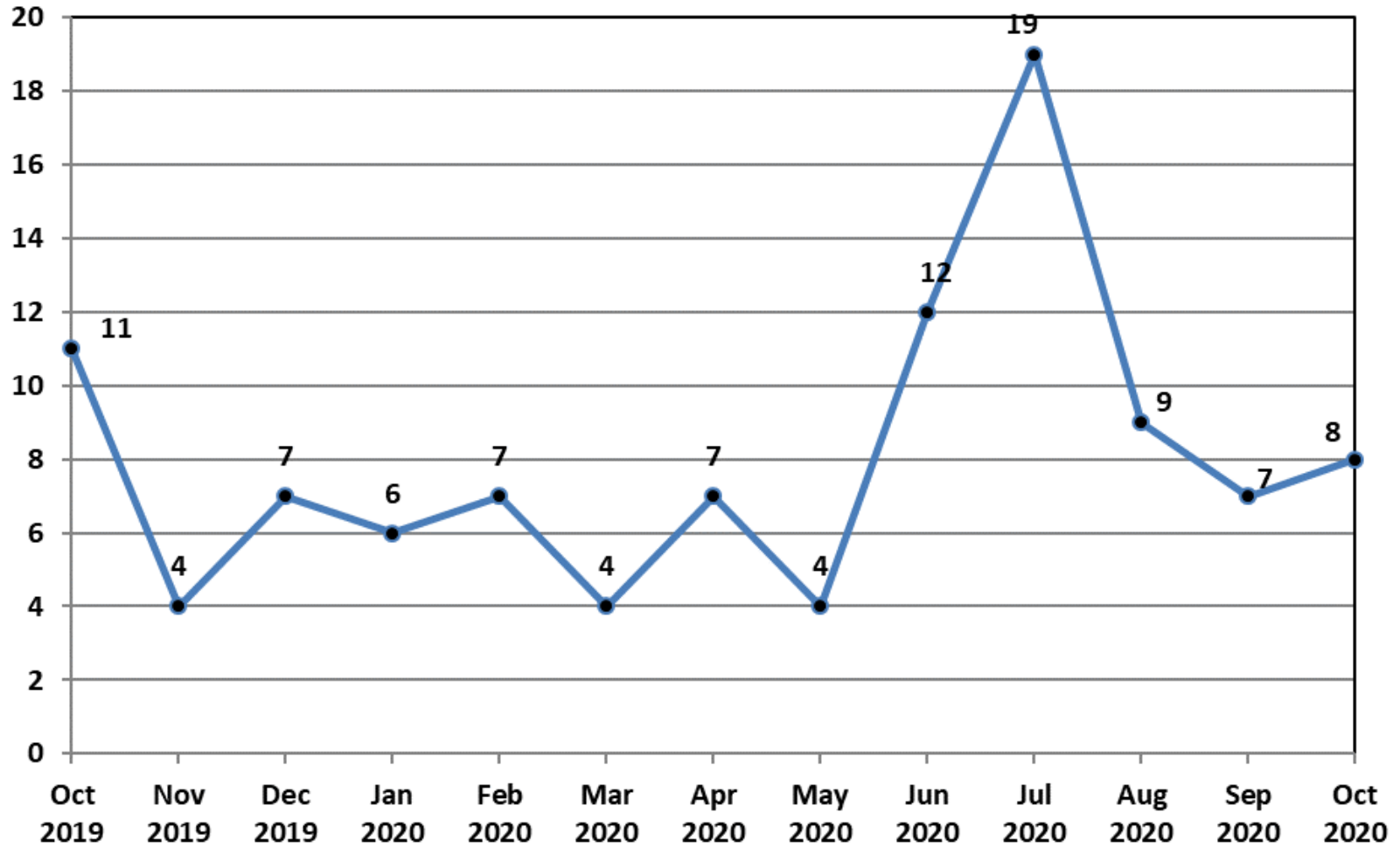
# U.S. Registered Rotorcraft Average Fatal Accidents Per Month, FY83-FY21



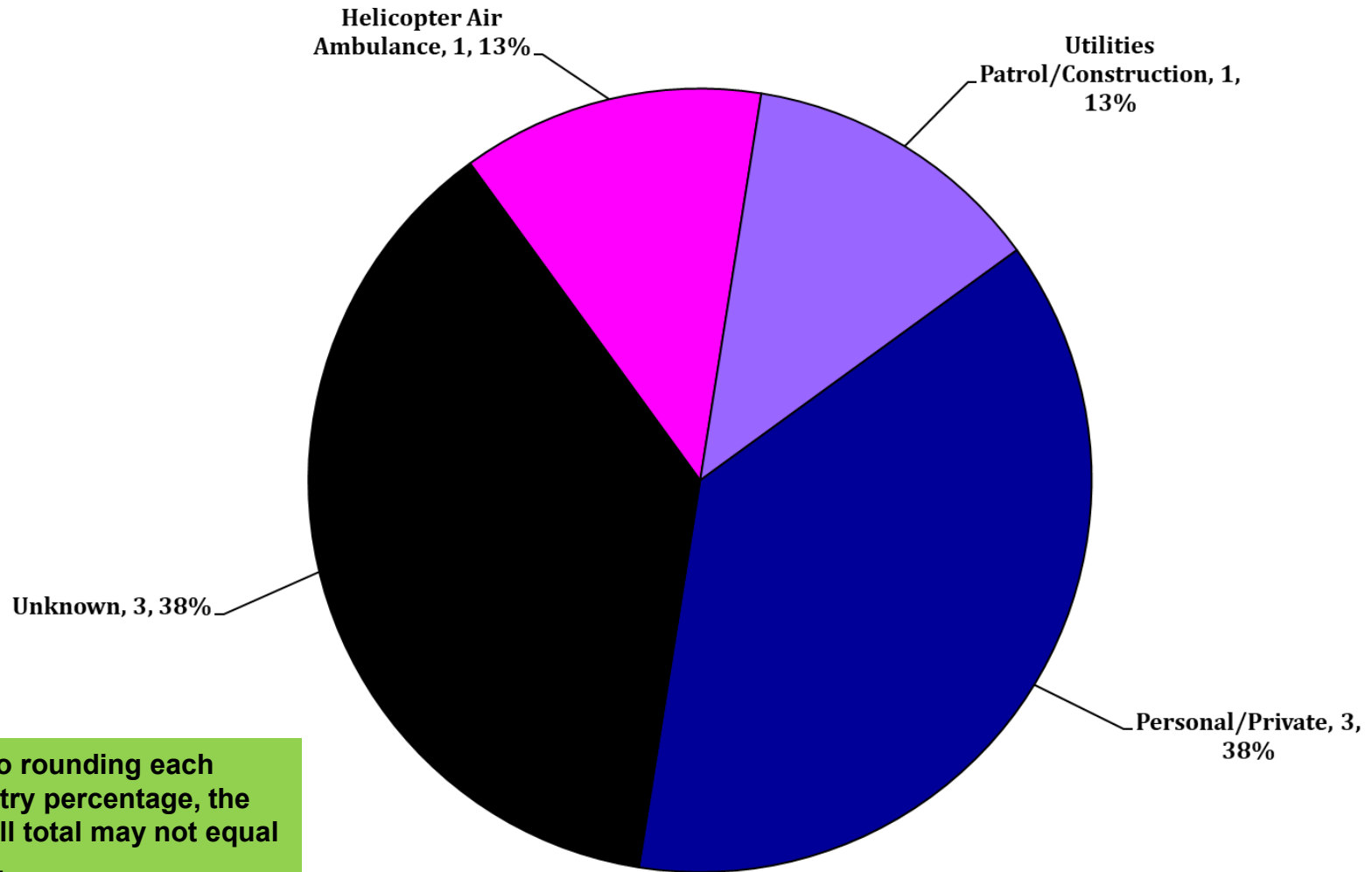
# % of U.S. Rotorcraft Accidents with a Fatality (FY21, Oct)



# U.S. Registered Rotorcraft 13 Month Rolling Accident Count



# FY 21 – Total Accidents by Industry (Oct)



Due to rounding each Industry percentage, the overall total may not equal 100%.

# FY 21 – Total FATAL Accidents by Industry (Oct)

None



# FY 21 – U.S. Registered Fatal Rotorcraft Accidents

None



## FY 21 - US Rotorcraft Accidents By Model

MFR	Model	Registered U.S. Fleet Size	Percentage of Total U.S. Fleet	Number of FY21 U.S. Registered Accidents	Percentage of Total FY21 U.S. Registered Accidents
Airbus Helicopters	AS350 (H125)	915	7%	1	13%
	BK117 (H145)	216	2%		
	EC120 (H120)	92	1%		
	EC130 (H130)	263	2%		
	EC135 (H135)	331	3%		

**Only models that comprise at least 1% of U.S. registered rotorcraft are listed unless an accident has occurred.**

\*Fleet size based on analysis of rotorcraft on FAA registry as of March 2020



## FY 21 - US Rotorcraft Accidents By Model

<b>MFR</b>	<b>Model</b>	<b>Registered U.S. Fleet Size</b>	<b>Percentage of Total U.S. Fleet</b>	<b>Number of FY21 U.S. Registered Accidents</b>	<b>Percentage of Total FY21 U.S. Registered Accidents</b>
<b>Bell</b>	<b>206Bs</b>	<b>934</b>	<b>7%</b>	<b>2</b>	<b>25%</b>
	<b>206Ls</b>	<b>559</b>	<b>4%</b>		
	<b>212</b>	<b>81</b>	<b>1%</b>		
	<b>407</b>	<b>773</b>	<b>6%</b>		
	<b>412</b>	<b>96</b>	<b>1%</b>		
	<b>429</b>	<b>106</b>	<b>1%</b>		
	<b>505</b>	<b>82</b>	<b>1%</b>		

**Only models that comprise at least 1% of U.S. registered rotorcraft are listed unless an accident has occurred.**

\*Fleet size based on analysis of rotorcraft on FAA registry as of March 2020



## FY 21 - US Rotorcraft Accidents By Model

MFR	Model	Registered U.S. Fleet Size	Percentage of Total U.S. Fleet	Number of FY21 U.S. Registered Accidents	Percentage of Total FY21 U.S. Registered Accidents
<b>Robinson</b>	<b>R-22</b>	<b>864</b>	<b>7%</b>	<b>1</b>	<b>13%</b>
	<b>R-44</b>	<b>1,667</b>	<b>13%</b>	<b>2</b>	<b>25%</b>
	<b>R-66</b>	<b>288</b>	<b>2%</b>		

**Only models that comprise at least 1% of U.S. registered rotorcraft are listed unless an accident has occurred.**

\*Fleet size based on analysis of rotorcraft on FAA registry as of March 2020

# FY 21 - US Rotorcraft Accidents By Model

MFR	Model	Registered U.S. Fleet Size	Percentage of Total U.S. Fleet	Number of FY21 U.S. Registered Accidents	Percentage of Total FY21 U.S. Registered Accidents
Sikorsky	S-61	93	1%		
	S-76	231	2%		
	S-92	87	1%		

Only models that comprise at least 1% of U.S. registered rotorcraft are listed unless an accident has occurred.

\*Fleet size based on analysis of rotorcraft on FAA registry as of March 2020

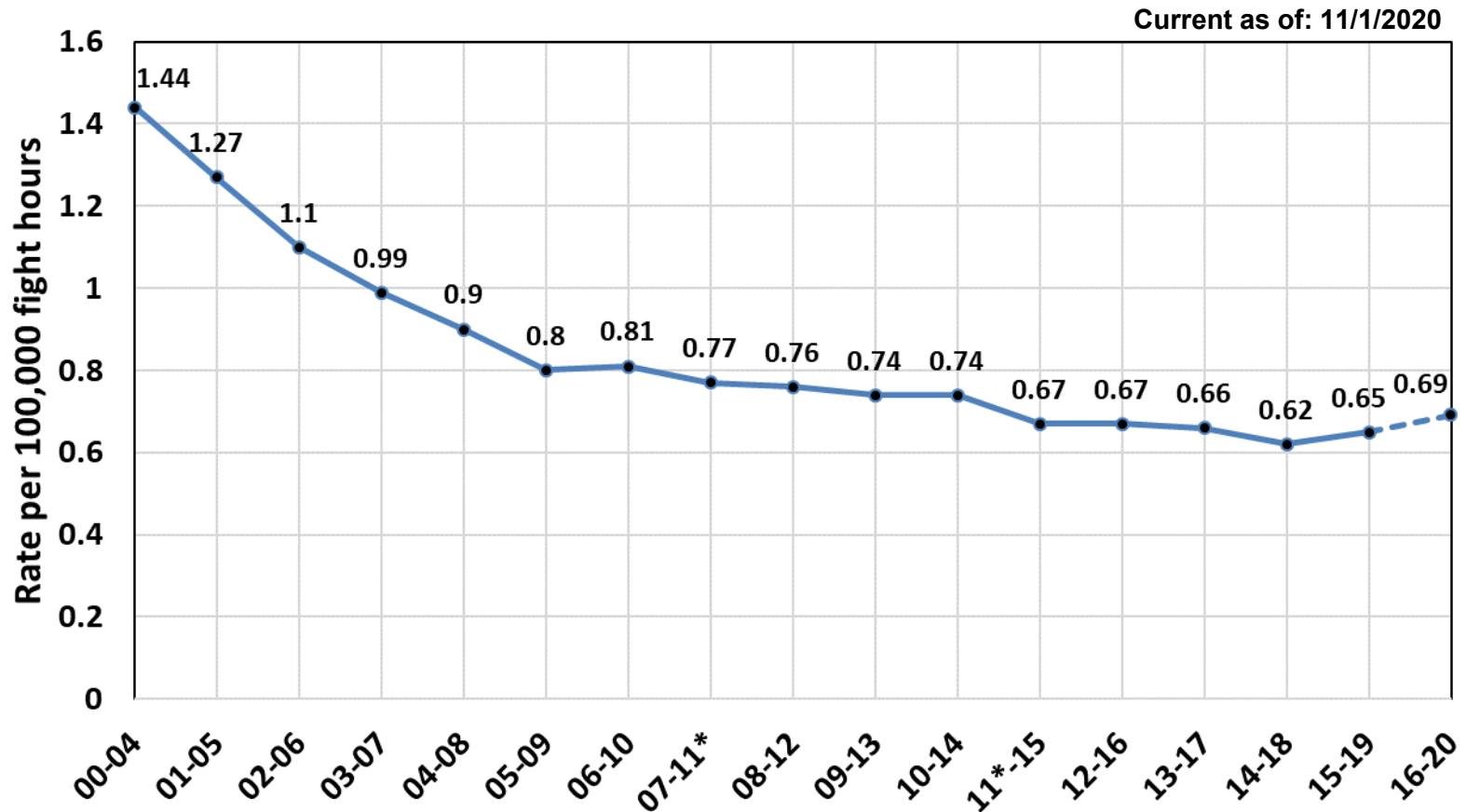
# FY 21 - US Rotorcraft Accidents By Model

MFR	Model	Registered U.S. Fleet Size	Percentage of Total U.S. Fleet	Number of FY21 U.S. Registered Accidents	Percentage of Total FY21 U.S. Registered Accidents
Enstrom	280	126	1%		
	480	63	< 1%	1	13%
	F28	160	1%		
Hiller	UH-12/H-23	285	2%		
Leonardo (formerly Agusta Westland)	A109	167	1%		
	A119	91	1%		
	AW139	130	1%		
MDHI	369	715	6%	1	13%
Restricted Category (all TCs)	HH-1/TH-1/UH-1	549	4%		
	OH-58	403	3%		
	H-60	213	2%		
Schweizer Rotorcraft Services Group	269/300/TH-55	516	4%		
Scott's Bell	47	532	4%		

Only models that comprise at least 1% of U.S. registered rotorcraft are listed unless an accident has occurred.

\*Fleet size based on analysis of rotorcraft on FAA registry as of March 2020

# U.S. Helicopter Safety Team (USHST) 5 Year Average Fatal Accident Rate (CY)



**Goal: By 2025, reduce the 5 year average fatal accident rate to 0.55 per 100K hours**

# U.S. Helicopter Safety Team (USHST) Key Fatal Accident Rate Markers (CY)

Current as of: 11/1/2020

