



**Federal Aviation
Administration**

Rotorcraft Standards Branch AIR-680

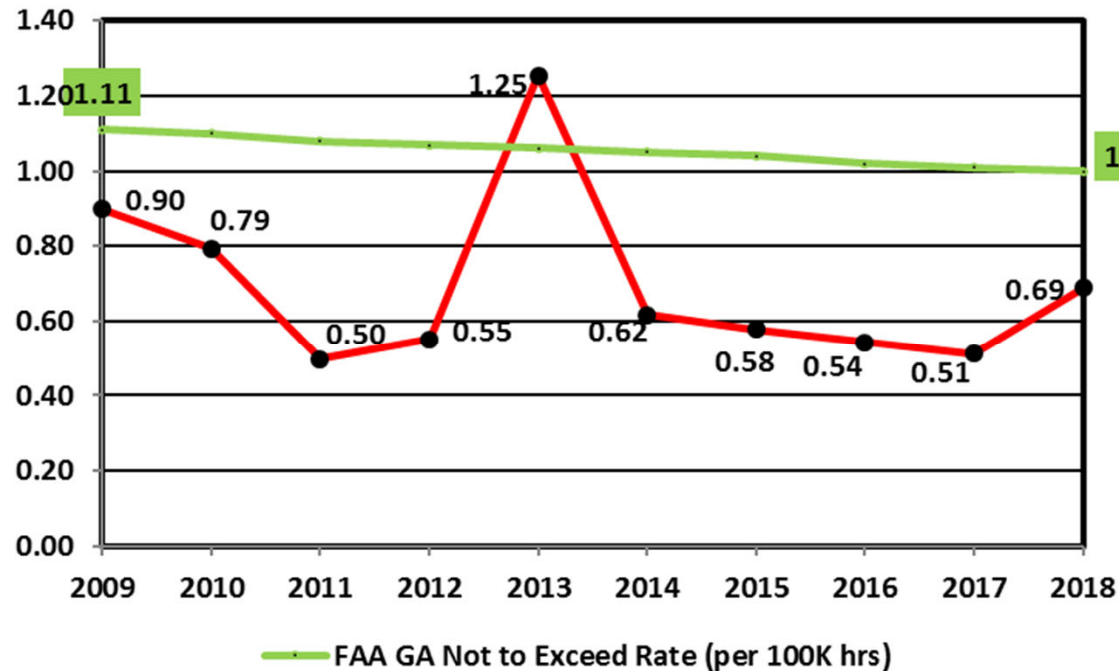
Monthly Accident Briefing

**Sep 2018/
End of FY18**

**By: AIR-682, Safety Management Section,
Rotorcraft Standards Branch**



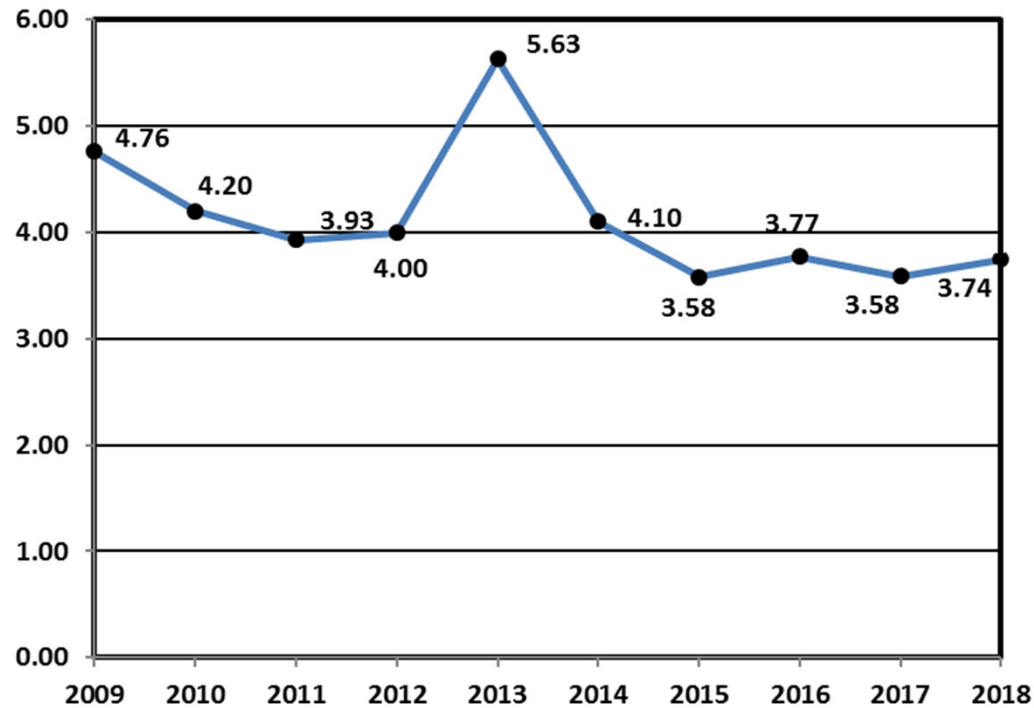
Estimated U.S. Rotorcraft FATAL Accident Rate (per 100,000 hours) – 10 Year Lookback



Rate calculation based on the following:

- 1) Accident totals compiled by AIR-682.
- 2) Historic rotorcraft flight hours extracted from General Aviation and Part 135 Activity Survey. The survey categorizes flight hours by calendar year. Assumption was that hours would be comparable if used for fiscal year calculations.
- 3) FY 11 rotorcraft flight hours and the projected hours for FY 18 were based on the FAA's FY2018-2038 forecast (released March 2018).

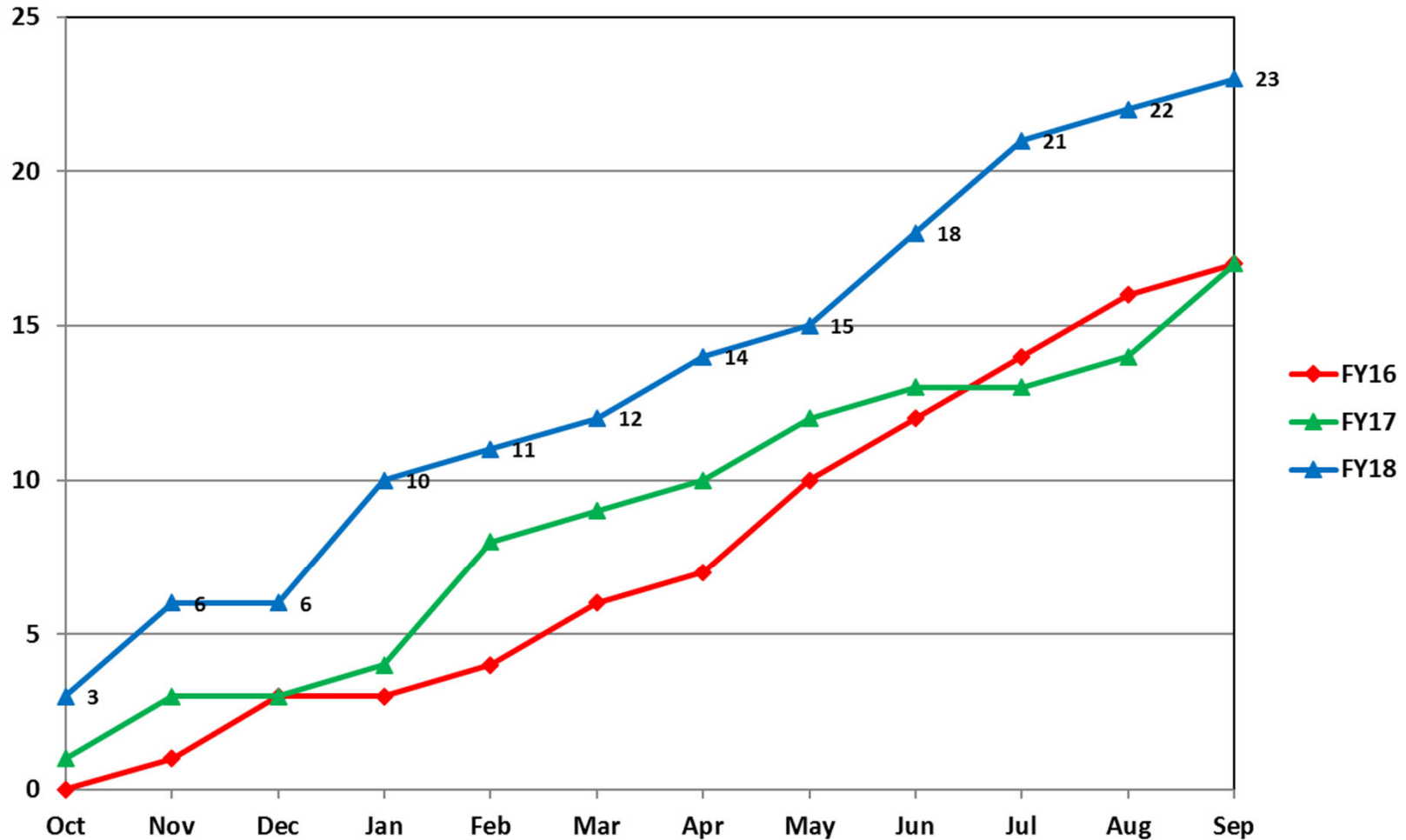
Estimated U.S. Rotorcraft Accident Rate (per 100,000 hours) – 10 Year Lookback



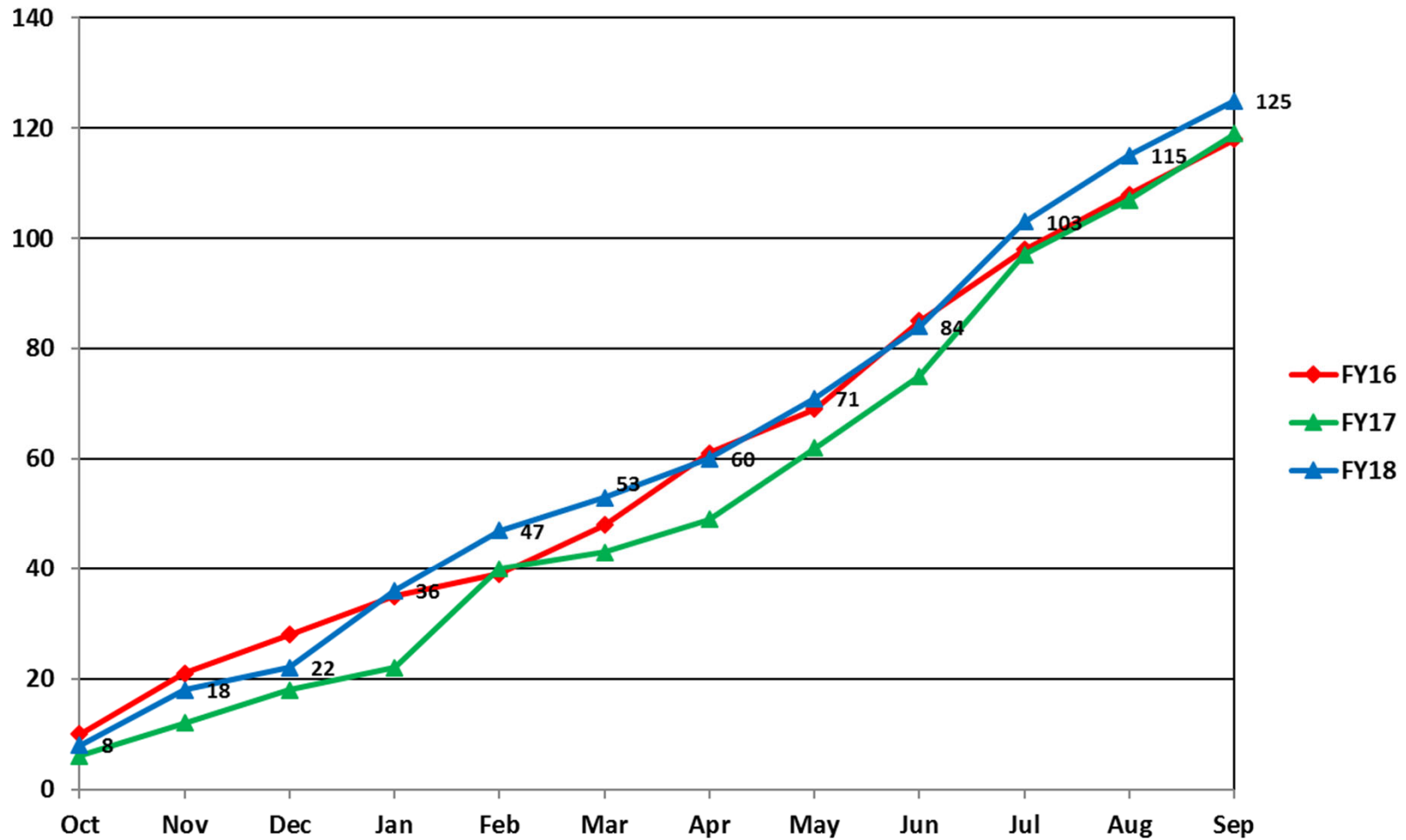
Rate calculation based on the following:

- 1) Accident totals compiled by AIR-682.
- 2) Historic rotorcraft flight hours extracted from General Aviation and Part 135 Activity Survey. The survey categorizes flight hours by calendar year. Assumption was that hours would be comparable if used for fiscal year calculations.
- 3) FY 11 rotorcraft flight hours and the projected hours for FY 18 were based on the FAA's FY2018-2038 forecast (released March 2018).

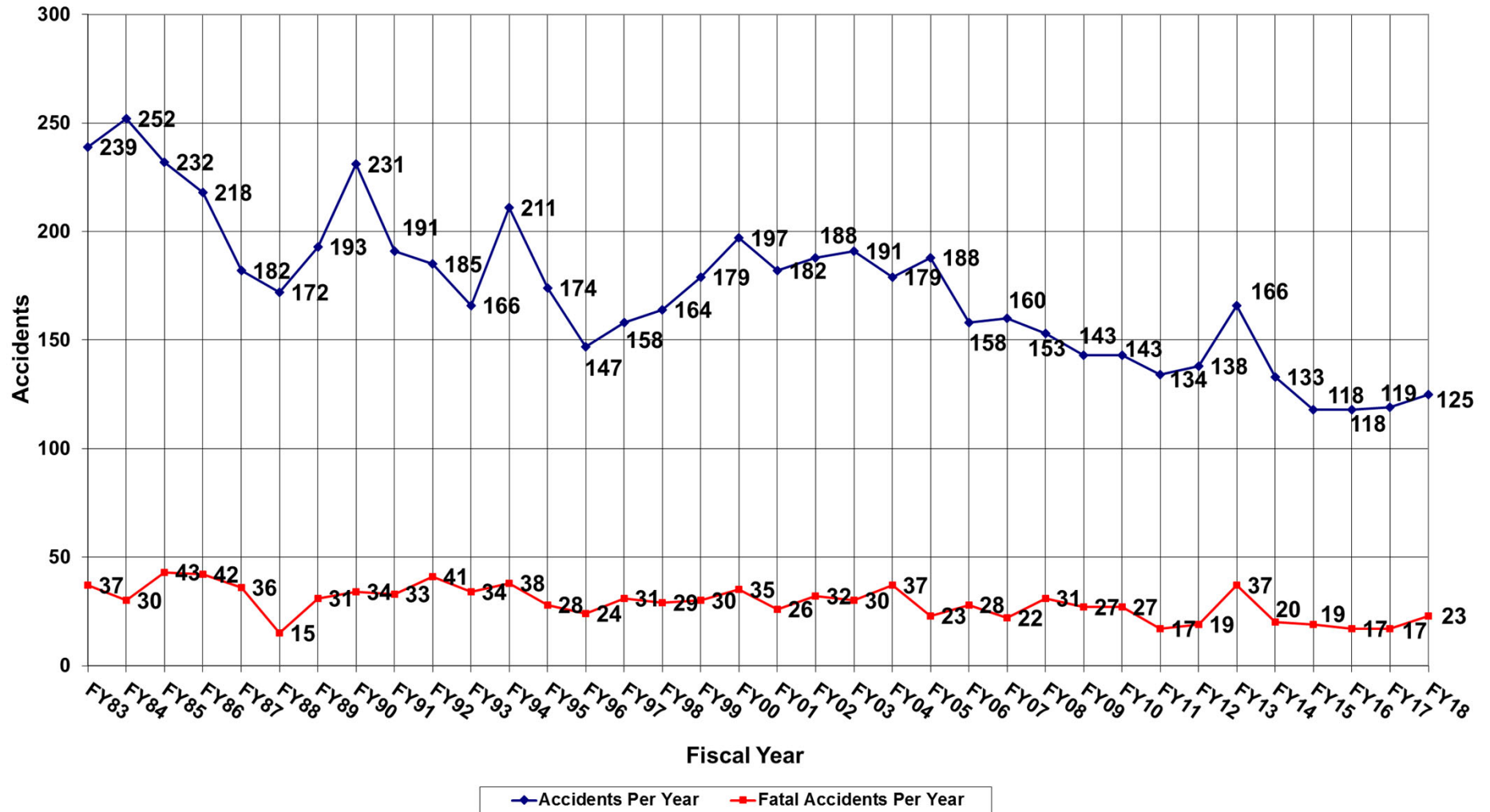
U.S. Registered Rotorcraft Cumulative Fatal Accident Count: FY16 - 18



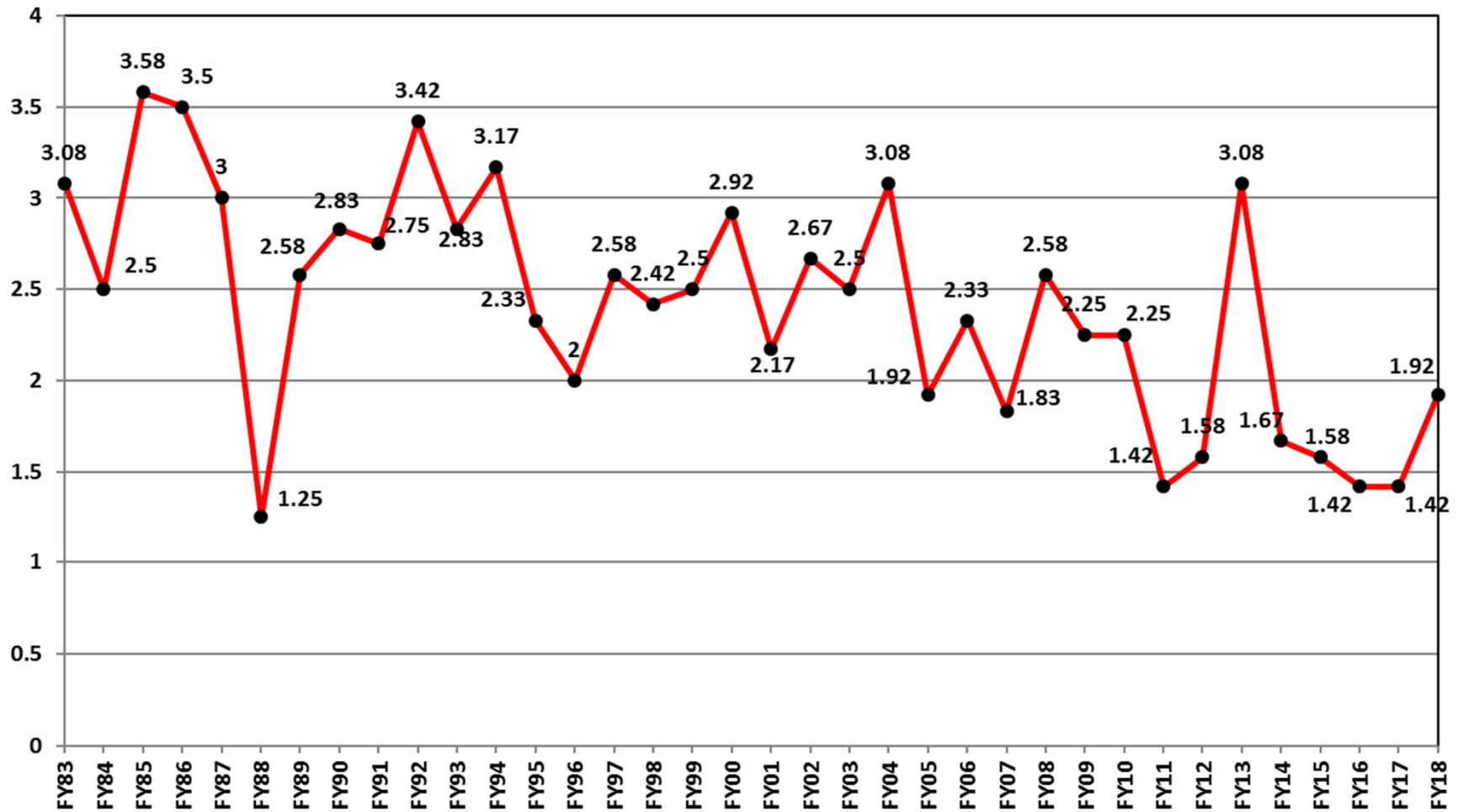
U.S. Registered Rotorcraft Cumulative Accident Count: FY16 - 18



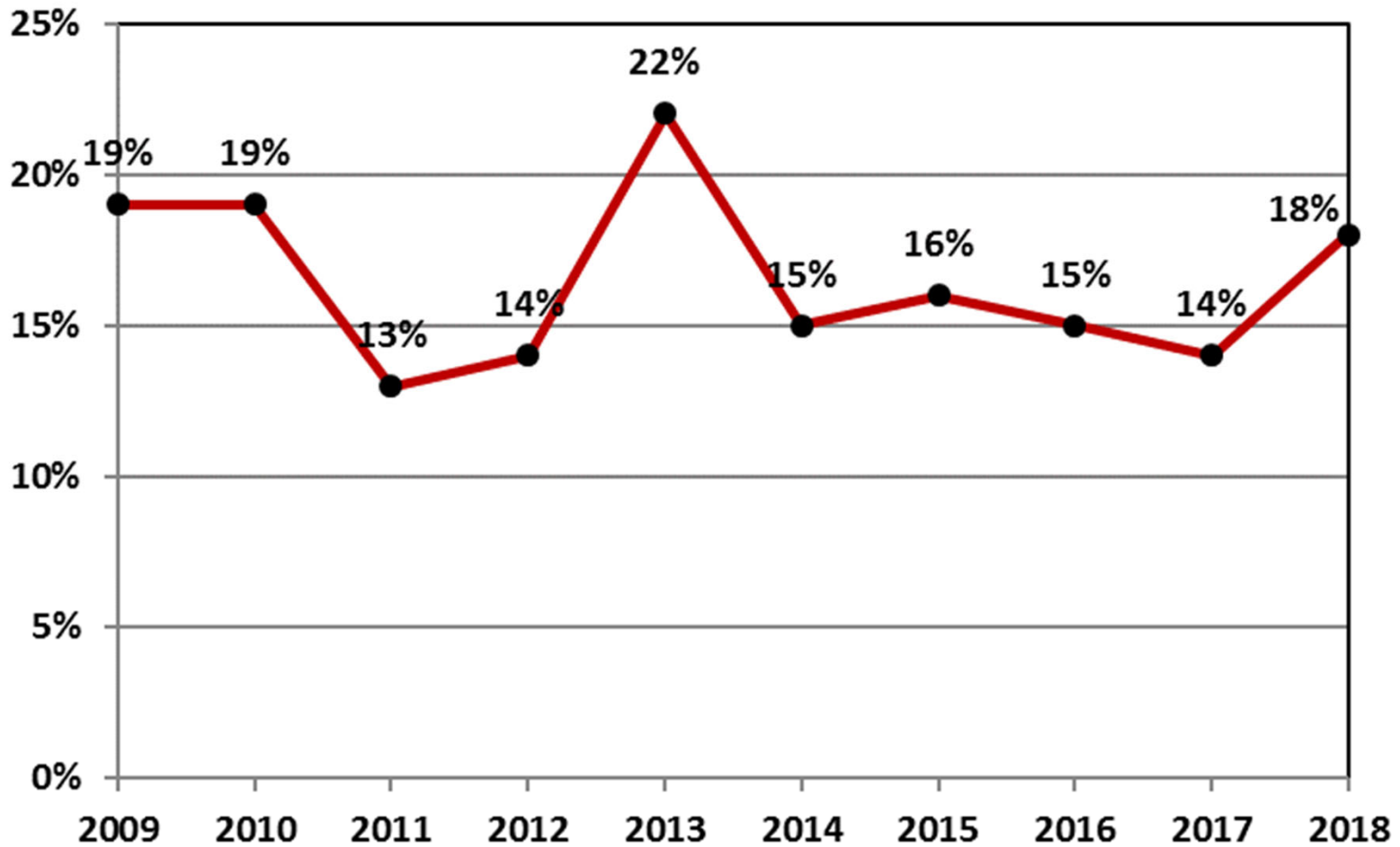
U.S. Registered Rotorcraft Accidents FY83 - FY18



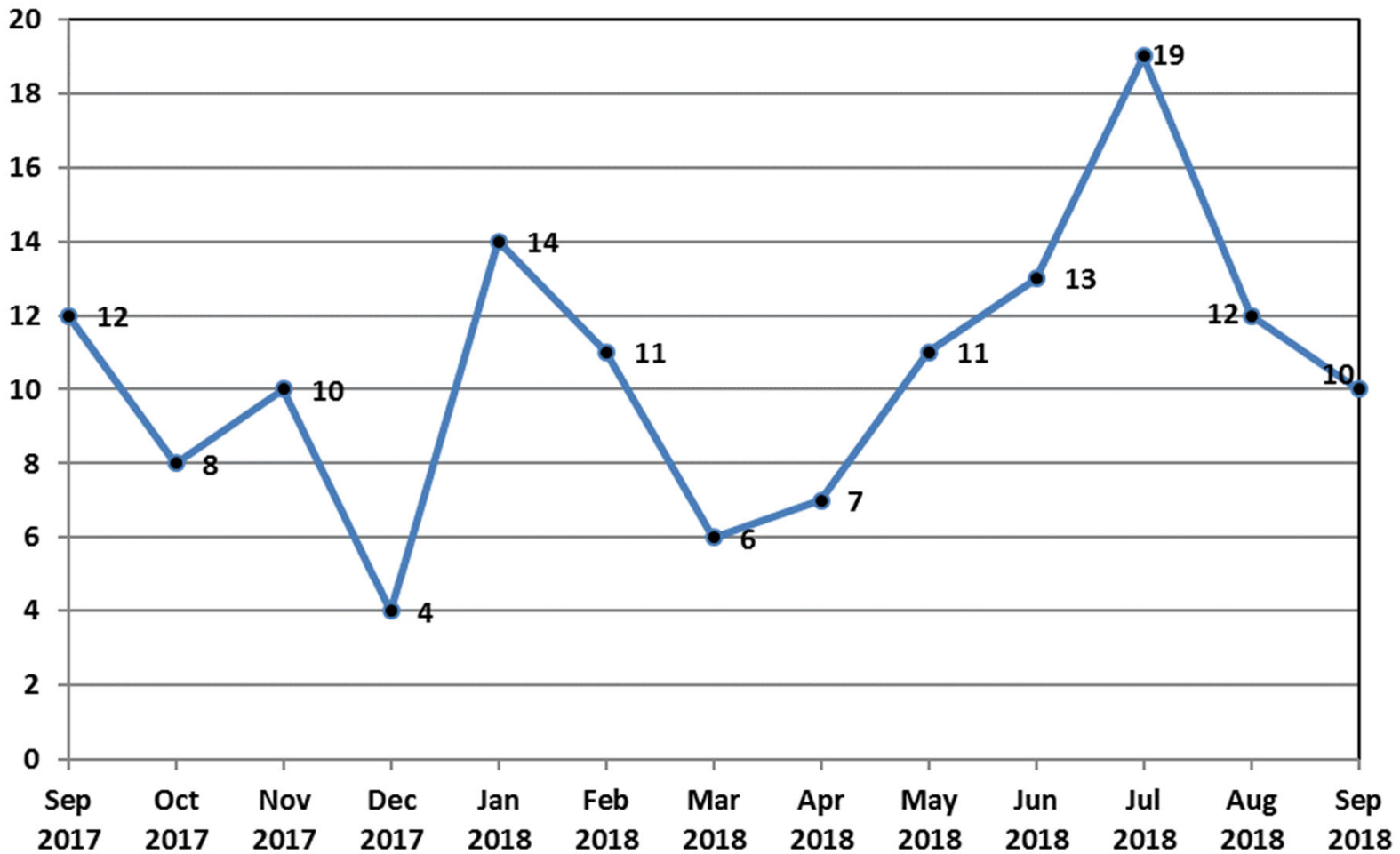
U.S. Registered Rotorcraft Average Fatal Accidents Per Month, FY83-FY18



% of U.S. Rotorcraft Accidents with a Fatality (FY18, Oct-Sep)



U.S. Registered Rotorcraft 13 Month Rolling Accident Count



FY17 vs. FY18 Accidents, By Industry

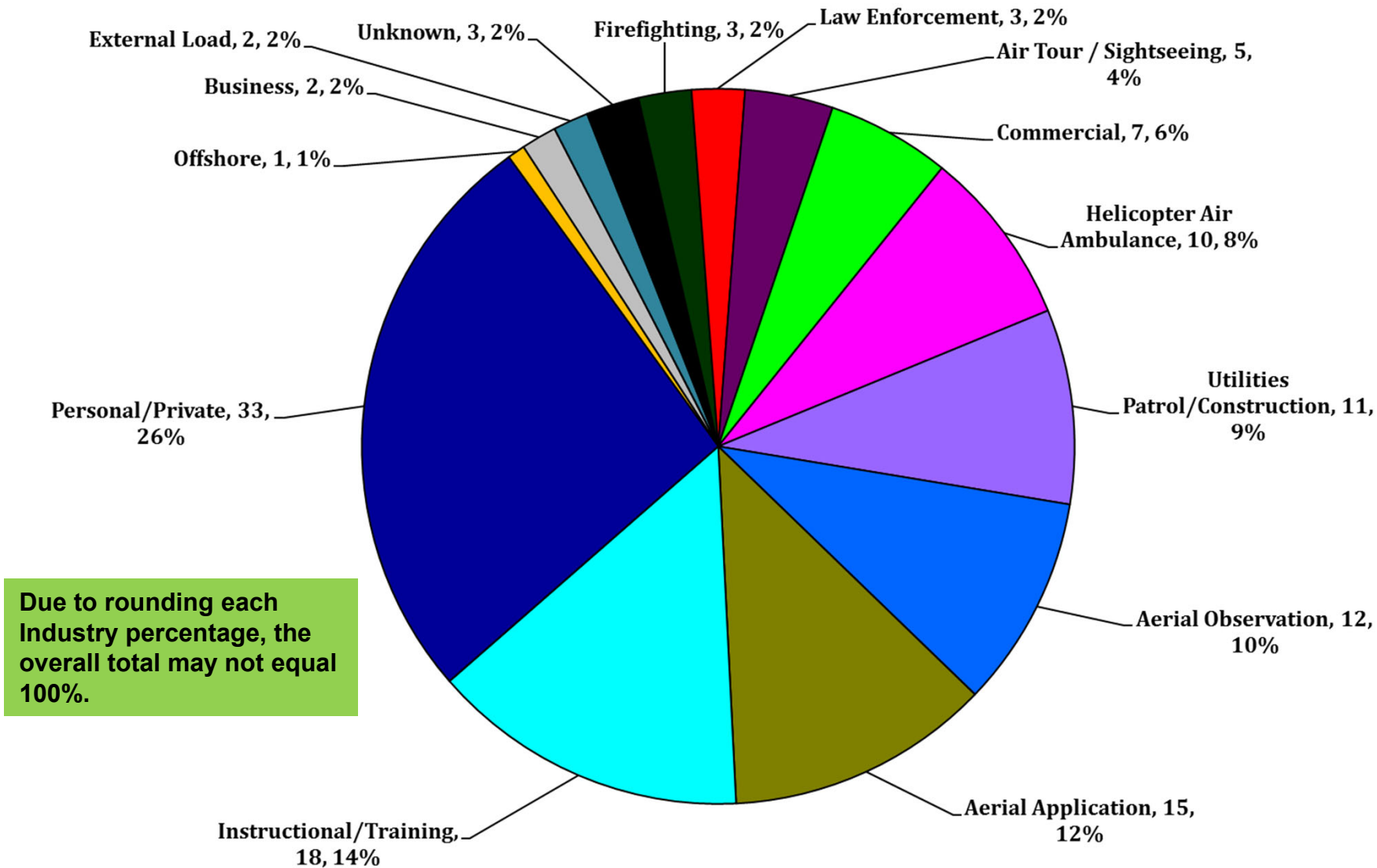
Industry	2017 Accident Count	2018 Accident Count	Year to Year Change
Instructional/Training	25	18	28% decrease
Aerial Application	24	15	38% decrease
Personal/Private	22	32	45% increase
Air Tour / Sightseeing	10	6	40% decrease
Aerial Observation	6	12	100% increase
Law Enforcement	6	3	50% decrease
Commercial	6	7	17% increase
Business	5	2	60% decrease
Helicopter Air Ambulance	4	10	150% increase
Utilities Patrol / Construction	3	11	267% increase
Offshore	3	1	66% decrease
External Load	2	2	no change
Firefighting	1	3	200% increase
Electronic News Gathering	1	0	100% decrease
Unknown	1	3	200% increase

119

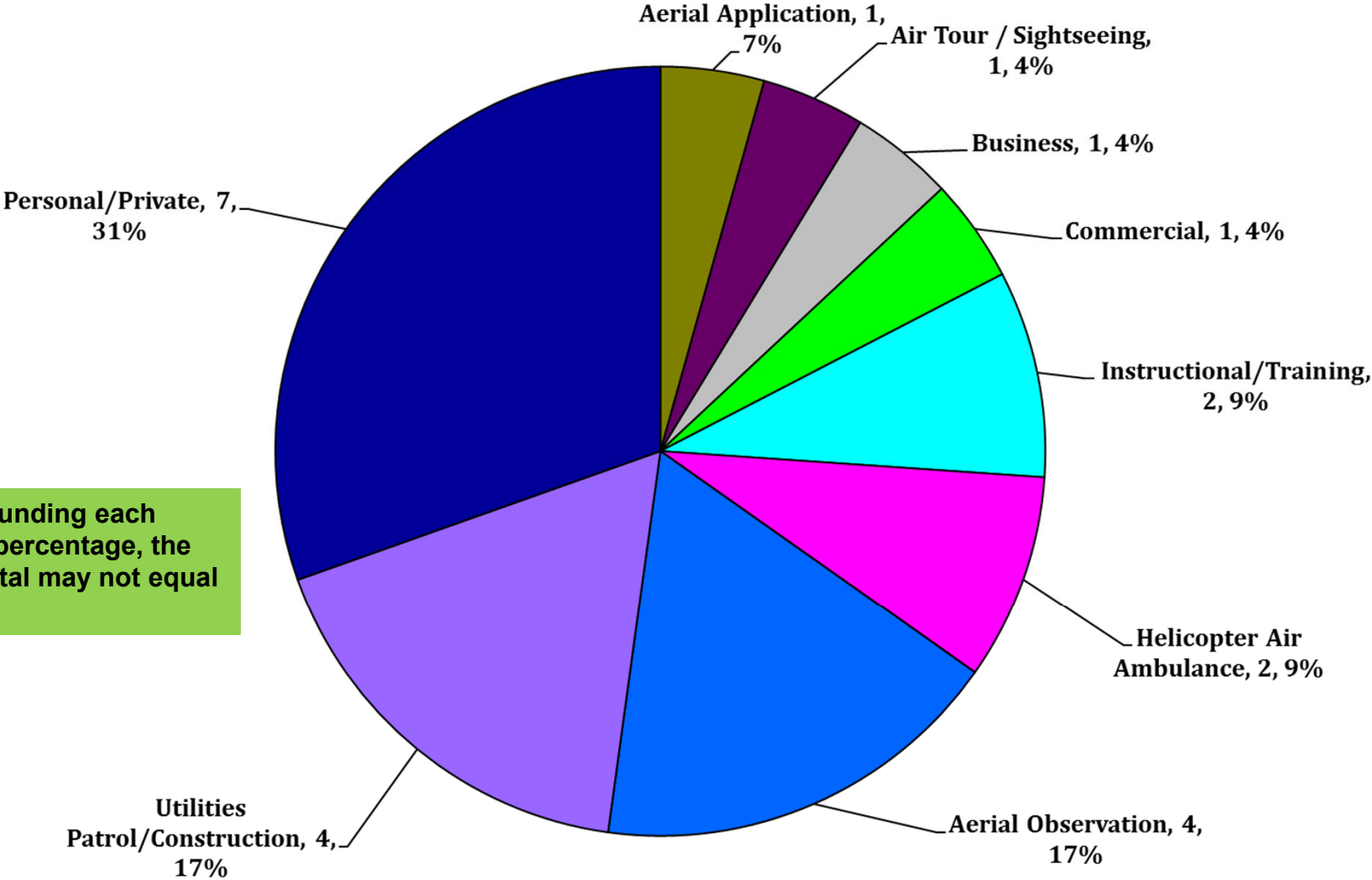
125



FY 18 – Total Accidents by Industry (Oct 2017 - Sep 2018)



FY 18 – Total FATAL Accidents by Industry (Oct 2017 - Sep 2018)



Due to rounding each industry percentage, the overall total may not equal 100%.

FY 18 – U.S. Registered Rotorcraft Accidents

Cumulative Counts – 125 Accidents, 23 Fatal Accidents, 50 Fatalities

Same time period, previous FY: 119 Accidents, 17 Fatal Accidents, 29 Fatalities

	Oct	Nov	Dec	Jan	Feb	Mar	Apr	May	Jun	Jul	Aug	Sep	Total
Accidents:	8	10	4	14	11	6	7	11	13	19	12	10	125
Fatal:	3	3	0	4	1	1	2	1	3	3	1	1	23
Fatalities:	4	6	0	11	5	5	5	1	3	5	2	3	50

Data Source: FAA, NTSB Databases. Includes only events classified as accidents and does not include incidents. The accident numbers for each month of the Fiscal Year may vary from the previous monthly briefing based on analysis between FAA and NTSB databases for the specified month. The NTSB database may include accidents that were not reported to this office resulting in slightly different numbers.

Accident Operations Summary (Cumulative)

Acronyms: HAA = Helicopter Air Ambulance, ENG = Electronic News Gathering, GA = General Aviation, GOM = Gulf of Mexico

	HAA 91/ 135	GOM 91/ 135	Part 133	Part 135 Other	Air Tour 91/135/136	Part 137	ENG 91/ 135	GA 91	N Reg Outside U.S.
Accidents:	10	1	9	6	5	13		75	6
Fatal:	2		3	1	1	1		14	1
Fatalities:	6		5	1	5	1		30	2

FY 18 – U.S. Registered Fatal Rotorcraft Accidents

- 9-28-18 – Airbus Helicopter AS350B3, N907PL, Lituya Bay, AK, Part 91, 3 Fatal, 1 Serious
 - Personal/private flight; ferrying a/c
 - Crashed offshore and submerged in shallow water NTSB Number Pending

- 8-21-18 – MDHI 369FF, N530FU, Granger, TX, Part 91, 2 Fatal
 - Instructional/Training flight to provide emergency procedure training
 - Struck power lines and crashed; post-crash fire [NTSB: WPR18FA232](#)

- 7-8-18 – Robinson R44, N616HS, Williamsburg, VA, Part 91, 2 Fatal (pilot & person in bldg.)
 - Personal/private flight; Departed Williamsburg for return to Stafford, VA
 - Crashed into 2 story condominium, 3 miles from airport [NTSB: ERA18FA187](#)

- 7-6-18 – Scott’s Bell 47G-2, Arlington, IN, Part 137, 1 Fatal
 - Aerial application flight; pilot was completing spray runs to apply fungicide to corn
 - A/c came to rest inverted; post-crash fire [NTSB: CEN18FA258](#)

FY 18 – U.S. Registered Fatal Rotorcraft Accidents

- 6-30-18 – Bell 206B, N10CV, Rio Grande, Puerto Rico, Part 91, 1 Fatal, 3 Serious
 - Personal/private; reported power loss
 - Forced landing into area of dense trees [NTSB: ERA18LA183](#)

- 6-29-18 – Robinson R-22, N787SH, Sterling City, TX, Part 91, 1 Fatal
 - Aerial Observation; attempted landing to transport trailer to conclude flight
 - About 5 feet above trailer, a/c began spinning left
 - Left spin continued, a/c climbed to 25 feet, then crashed [NTSB: CEN18FA244](#)

- 6-9-18 – Robinson R-44, N529DW, Oshkosh, WI, Part 135, 1 Fatal
 - Aerial photography flight; pilot dropped off 1 pax and departed for refuel
 - Contacted static line and fiber optic line of five-line array over the Fox River
 - Crashed in the river and sank [NTSB: CEN18FA215](#)

- 5-20-18 – MDHI 369D, N362JS, Luling, LA, Part 133, 1 Fatal, 1 Serious, 1 Minor
 - Utilities Patrol/Construction; aerial inspection and maintenance to structure
 - Collided with powerline structure and crashed [NTSB: CEN18FA182](#)

FY 18 – U.S. Registered Fatal Rotorcraft Accidents

- 4-26-18 – Airbus Helicopters AS350B2, N127LN, Hazelhurst, WI, Part 135, 3 Fatal
 - Night HAA flight returning to base near Woodruff after patient drop off
 - Crashed in wooded area 12 miles South of destination [NTSB: CEN18FA149](#)

- 4-8-18 – MDHI 600N, N602BP, Smethport, PA, Part 133, 2 Fatal, 1 Serious
 - Utilities Patrol/Construction flight to remove/resecure static line to structure
 - One lineman on skid; one passing tools from inside a/c
 - A/c struck powerline structure; descended vertically [NTSB: ERA18FA122](#)

- 3-11-18 – Airbus Helicopters AS350B2, N350LH, New York, NY, Part 91, 5 Fatal, 1 Minor
 - Aerial photography flight; reported loss of engine power
 - Ditched in East River; a/c rolled inverted in water [NTSB: ERA18MA099](#)

- 2-10-18 – Airbus Helicopters EC130B4, N155GC, Grand Canyon, AZ, Part 136, 5 Fatal, 2 Serious
 - Air tour flight; approach to land at Quartermaster LZ
 - Impacted canyon wash; post-crash fire [NTSB: WPR18FA087](#)

FY 18 – U.S. Registered Fatal Rotorcraft Accidents

- 1-30-18 – Robinson R-44, N7530R, Newport Beach, CA, Part 91, 3 Fatal, 1 Serious
 - Departed John Wayne Airport w/intended destination of Catalina Island
 - Crashed 1 mile from airport shortly after departure
 - A/c crashed in a neighborhood, impacting a house [NTSB: WPR18FA077](#)

- 1-27-18 – MDHI 369D, N369TH, Pomeroy, WA, Public Aircraft, 1 Fatal, 2 Serious
 - Mule deer capture and collar flight
 - Crashed under unknown circumstances in ravine [NTSB: WPR18FA074](#)

- 1-17-18 – Modified Bell UH-1H, N658H, Raton, NM, Part 91, 5 Fatal, 1 Serious
 - Restricted category a/c; Personal use night flight w/passengers over private ranch
 - Crashed; post-crash fire [NTSB: CEN18FA078](#)

- 1-15-18 – MDHI 369HM, N4QX, Perrysburg, OH, Part 91, 2 Fatal
 - Aerial inspection of transmission towers for Toledo Edison power grid
 - Impacted terrain 120 feet west of power lines
 - No evidence of power line or tower impact [NTSB: CEN18FA074](#)

FY 18 – U.S. Registered Fatal Rotorcraft Accidents

- 11-20-17 – Robinson R-22, N4179M, Electra, TX, Part 91, 1 Fatal
 - Business flight; low-level cattle herding
 - Observed over power lines; descended in nose low attitude
 - Post-crash fire; damaged powerlines above wreckage [NTSB: CEN18FA035](#)

- 11-19-17 – Bell 407, N620PA, Stuttgart, AR, Part 135, 3 Fatal
 - Night VMC HAA positioning flight for patient pick up
 - Wreckage located on the bank of a reservoir
 - Post-crash fire; bird carcasses located in wreckage [NTSB: CEN18FA033](#)

- 11-7-17 – MDHI 369D, N138WH, Sulphur, LA, Part 133, 2 Fatal (on long line)
 - Utilities construction; 2 linemen workers on long line installing guard ropes
 - Long line contacted shield wire between transmission towers; line severed
 - 2 linemen fatally injured after fall from ≈100 feet [NTSB: CEN18LA026](#)

FY 18 – U.S. Registered Fatal Rotorcraft Accidents

- 10-24-17 – Robinson R-22, N8537J, Arlington, WA, Part 91, 1 Fatal, 1 Minor
 - Personal flight; departed residence then proceeded over nearby lake
 - Witness observed a/c flying 5 feet above the lake, then skids contacted water
 - Crashed in the lake and sank in 31 feet of water [NTSB: WPR18FA016](#)

- 10-16-17 – Robinson R-44, N820DF, Molokai, HI, Part 91, 2 Fatal
 - Instructional flight; Practice instrument procedures
 - Had completed missed approach and received clearance to PHNL from ATC
 - Impacted water; CFI and pilot missing, presumed fatal [NTSB: WPR18LA010](#)

- 10-1-17 – Brantly B-2B, N2284U, Midland, MI, Part 91, 1 Fatal, 1 Minor
 - Personal flight; landed in a field to attend a family gathering
 - Crashed after departing field for local flight [NTSB: CEN18FA001](#)

FY 18 – U.S. Registered Fatal Rotorcraft Accidents Outside the U.S.

- 7-4-18 – MDHI 369D, N8648F, Marshall Islands (offshore), Part 91, 2 Fatal
– Aerial Observation flight; Departed fishing boat for fish spotting
– Impacted water shortly after takeoff from boat [NTSB: WPR18LA188](#)

FY17 vs. FY18 Accidents, By Model

Manufacturer	Model	% of U.S. Fleet in 2018	2017 Accident Count	2018 Accident Count	Year to Year Change
Airbus Helicopters	AS350 (H125)	7%	6	8	33% increase
Bell	206Bs	8%	10	8	20% decrease
Bell	206Ls	5%	2	2	no change
Bell	407	6%	5	2	60% decrease
Robinson	R-22	7%	21	17	19% decrease
Robinson	R-44	13%	27	25	7% decrease
MDHI	369	6%	9	19	111% increase
Restricted Category	H-1s	5%	2	5	150% increase
Scott's Bell	47	5%	7	5	29% decrease
Schweizer Rotorcraft Services Group	269s/300s	4%	5	10	100% increase

Note: Table only shows models that accounted for at least 4% of the U.S. registered rotorcraft fleet in 2018. Together, these models accounted for 66% of the fleet. They accounted for 78% of all rotorcraft accidents in 2017 and 81% in 2018.

FY 18 - US Rotorcraft Accidents By Model

MFR	Model	Registered U.S. Fleet Size	Percentage of Total U.S. Fleet	Number of FY18 U.S. Registered Accidents	Percentage of Total FY18 U.S. Registered Accidents
Airbus Helicopters	AS350 (H125)	918	7%	8	6%
	BK117 (H145)	203	2%	2	2%
	EC120 (H120)	95	1%		
	EC130 (H130)	247	2%	3	2%
	EC135 (H135)	311	2%	1	1%
	SA330J	21	< 1%	1	1%
	SA341	39	< 1%	1	1%

Only models that comprise at least 1% of U.S. registered rotorcraft are listed unless an accident has occurred.

*Fleet size based on analysis of rotorcraft on FAA registry as of Apr 2018

FY 18 - US Rotorcraft Accidents By Model

MFR	Model	Registered U.S. Fleet Size	Percentage of Total U.S. Fleet	Number of FY18 U.S. Registered Accidents	Percentage of Total FY18 U.S. Registered Accidents
Bell	206Bs	1,027	8%	8	6%
	206Ls	580	5%	2	2%
	212	93	1%	1	
	407	722	6%	2	2%
	412	93	1%		
	429	85	1%		

Only models that comprise at least 1% of U.S. registered rotorcraft are listed unless an accident has occurred.

*Fleet size based on analysis of rotorcraft on FAA registry as of Apr 2018

FY 18 - US Rotorcraft Accidents By Model

MFR	Model	Registered U.S. Fleet Size	Percentage of Total U.S. Fleet	Number of FY18 U.S. Registered Accidents	Percentage of Total FY18 U.S. Registered Accidents
Robinson	R-22	910	7%	17	14%
	R-44	1,605	13%	25	20%
	R-66	249	2%	1	1%

Only models that comprise at least 1% of U.S. registered rotorcraft are listed unless an accident has occurred.

*Fleet size based on analysis of rotorcraft on FAA registry as of Apr 2018

FY 18 - US Rotorcraft Accidents By Model

MFR	Model	Registered U.S. Fleet Size	Percentage of Total U.S. Fleet	Number of FY18 U.S. Registered Accidents	Percentage of Total FY18 U.S. Registered Accidents
Sikorsky	S-76	244	2%	3	2%
	S-92	85	1%		

Only models that comprise at least 1% of U.S. registered rotorcraft are listed unless an accident has occurred.

*Fleet size based on analysis of rotorcraft on FAA registry as of Apr 2018



FY 18 - US Rotorcraft Accidents By Model

MFR	Model	Registered U.S. Fleet Size	Percentage of Total U.S. Fleet	Number of FY18 U.S. Registered Accidents	Percentage of Total FY18 U.S. Registered Accidents
Brantly	B-2	76	1%	2	2%
Enstrom	280	137	1%	1	1%
	480	69	1%		
	F28	164	1%		
Helicopteres Guimbal	Cabri G2	24	< 1%	2	2%
Hiller	UH-12/H-23	311	2%	1	1%
Leonardo (formerly Agusta Westland)	A109	174	1%	1	1%
	A119	98	1%		
	AW139	124	1%		
MDHI	369	718	6%	19	15%
	600N	26	< 1%	1	1%
Restricted Category (all TCs)	HH-1/TH-1/UH-1	572	5%	5	4%
	OH-58	442	3%	3	2%
Schweizer Rotorcraft Services Group	269/300/TH-55	557	4%	10	8%
Scott's Bell	47	628	5%	5	4%

Only models that comprise at least 1% of U.S. registered rotorcraft are listed unless an accident has occurred.

*Fleet size based on analysis of rotorcraft on FAA registry as of Apr 2018



**Federal Aviation
Administration**

Rotorcraft Standards Branch

AIR-680

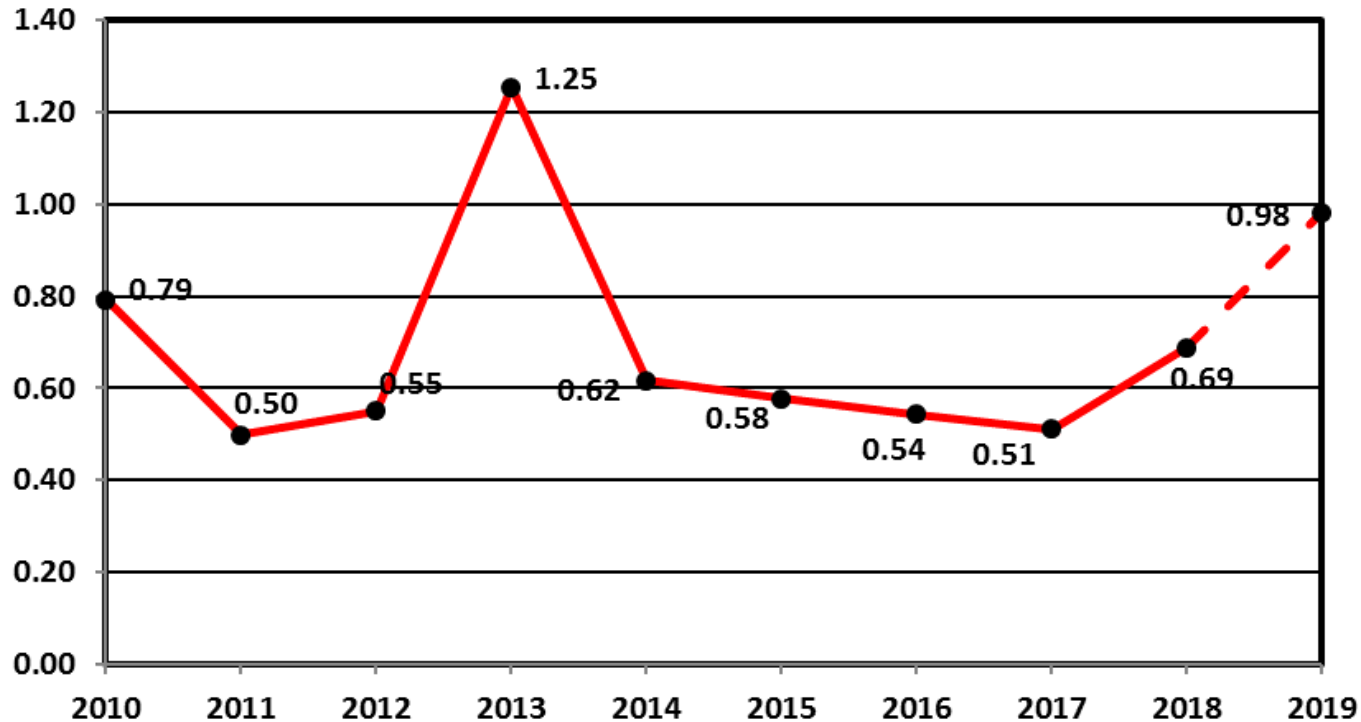
Monthly Accident Briefing

Oct 2018

**By: AIR-682, Safety Management Section,
Rotorcraft Standards Branch**



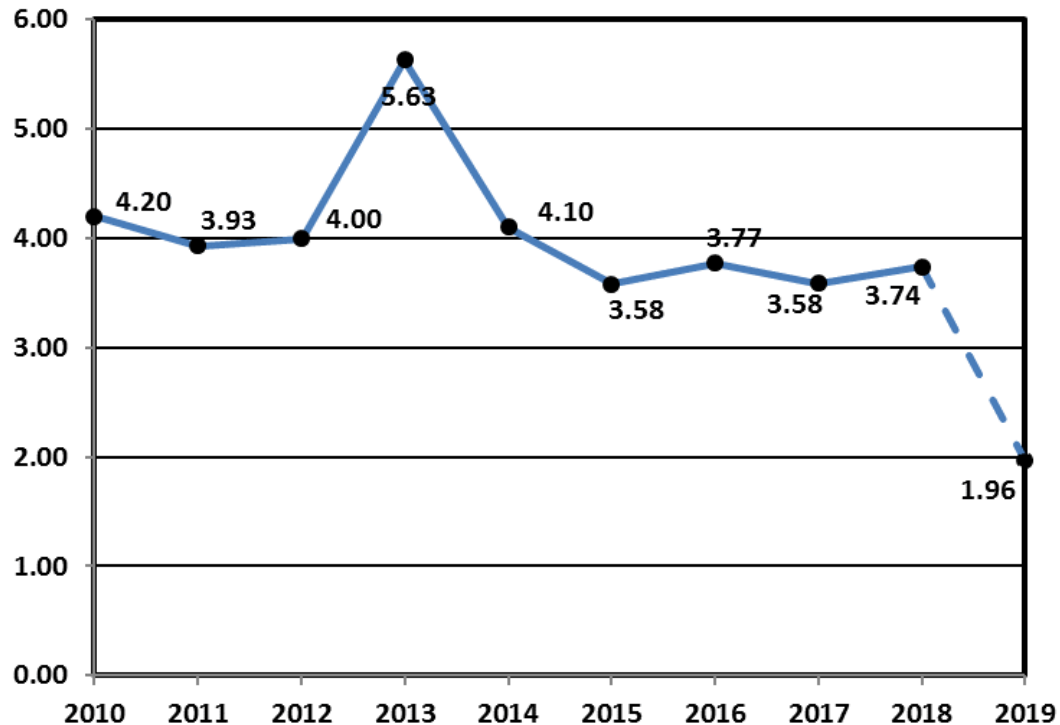
Estimated U.S. Rotorcraft FATAL Accident Rate (per 100,000 hours) – 10 Year Lookback



Rate calculation based on the following:

- 1) Accident totals compiled by AIR-682.
- 2) Historic rotorcraft flight hours extracted from General Aviation and Part 135 Activity Survey. The survey categorizes flight hours by calendar year. Assumption was that hours would be comparable if used for fiscal year calculations.
- 3) FY 11 rotorcraft flight hours and the projected hours for FY 18-19 were based on the FAA's FY2018-2038 forecast (released March 2018).

Estimated U.S. Rotorcraft Accident Rate (per 100,000 hours) – 10 Year Lookback



Rate calculation based on the following:

- 1) Accident totals compiled by AIR-682.
- 2) Historic rotorcraft flight hours extracted from General Aviation and Part 135 Activity Survey. The survey categorizes flight hours by calendar year. Assumption was that hours would be comparable if used for fiscal year calculations.
- 3) FY 11 rotorcraft flight hours and the projected hours for FY 18-19 were based on the FAA's FY2018-2038 forecast (released March 2018).

FY 19 – U.S. Registered Rotorcraft Accidents

Cumulative Counts – 6 Accidents, 3 Fatal Accidents, 4 Fatalities

Same time period, previous FY: 8 Accidents, 3 Fatal Accidents, 4 Fatalities

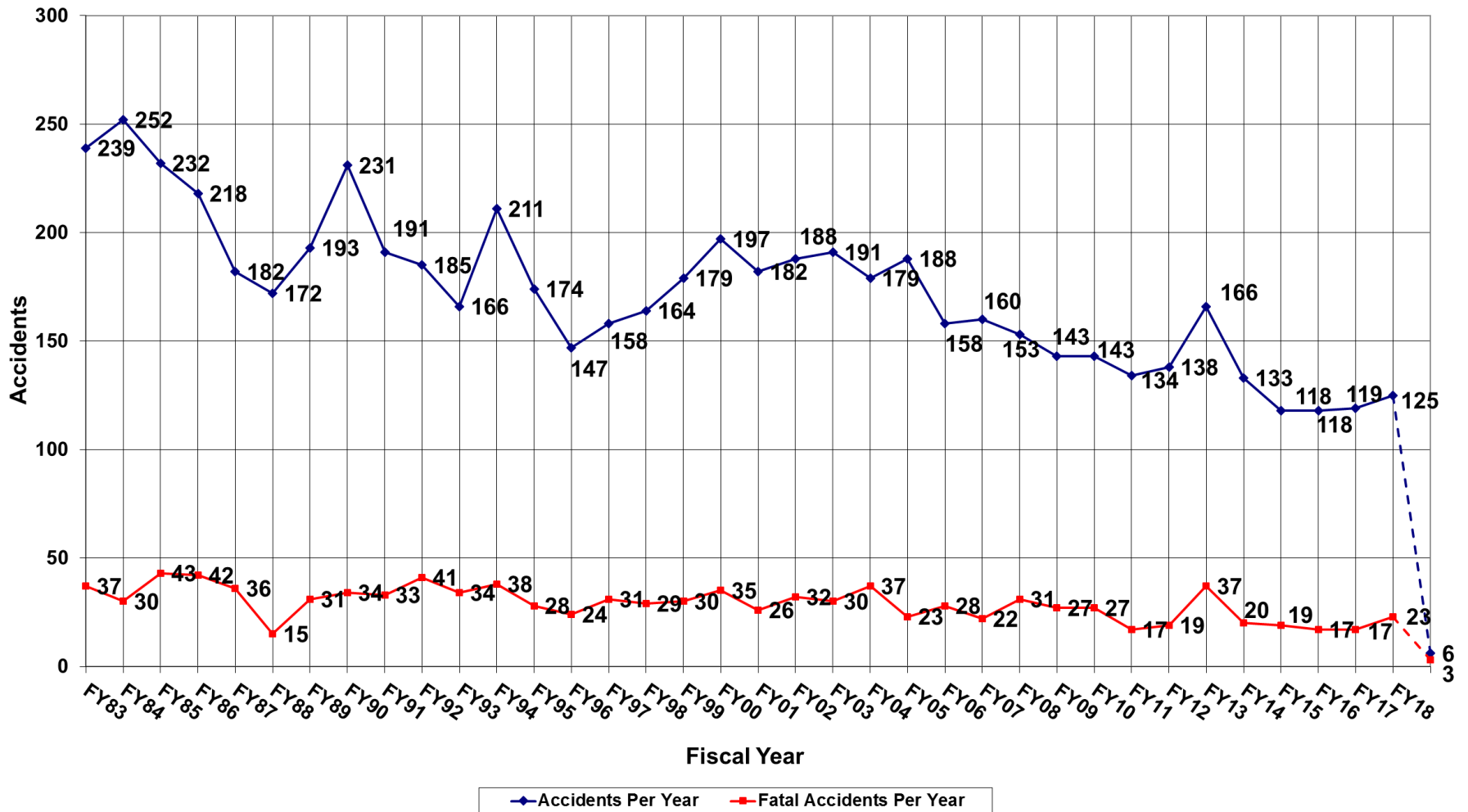
	Oct	Nov	Dec	Jan	Feb	Mar	Apr	May	Jun	Jul	Aug	Sep	Total
Accidents:	6												6
Fatal:	3												3
Fatalities:	4												4

Data Source: FAA, NTSB Databases. Includes only events classified as accidents and does not include incidents. The accident numbers for each month of the Fiscal Year may vary from the previous monthly briefing based on analysis between FAA and NTSB databases for the specified month. The NTSB database may include accidents that were not reported to this office resulting in slightly different numbers.

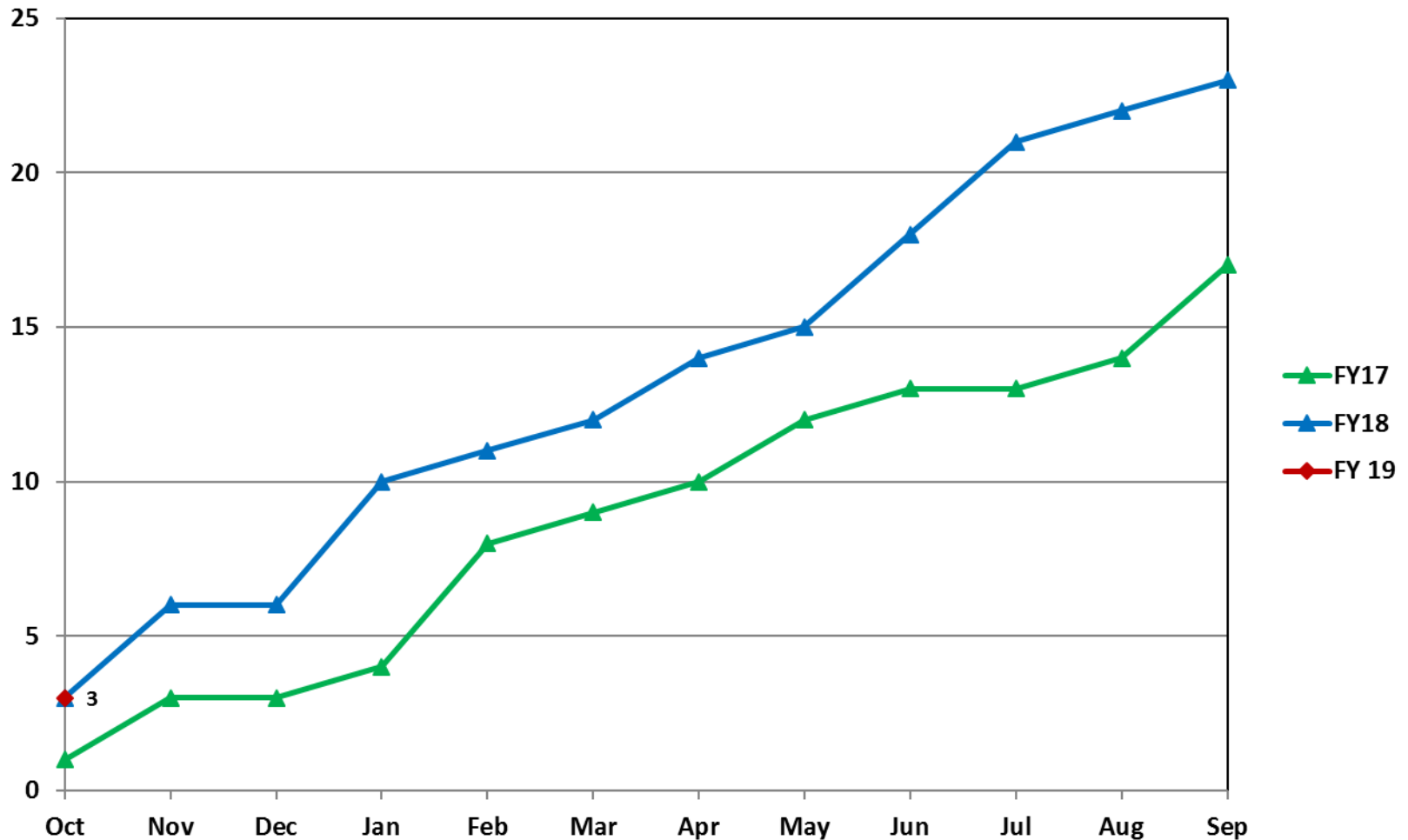
Estimated Rates by Month (per 100,000 flight hours)

	Oct	Nov	Dec	Jan	Feb	Mar	Apr	May	Jun	Jul	Aug	Sep	YTD
Accidents:	1.96												1.96
Fatal:	0.98												0.98
Fatalities:	1.31												1.31

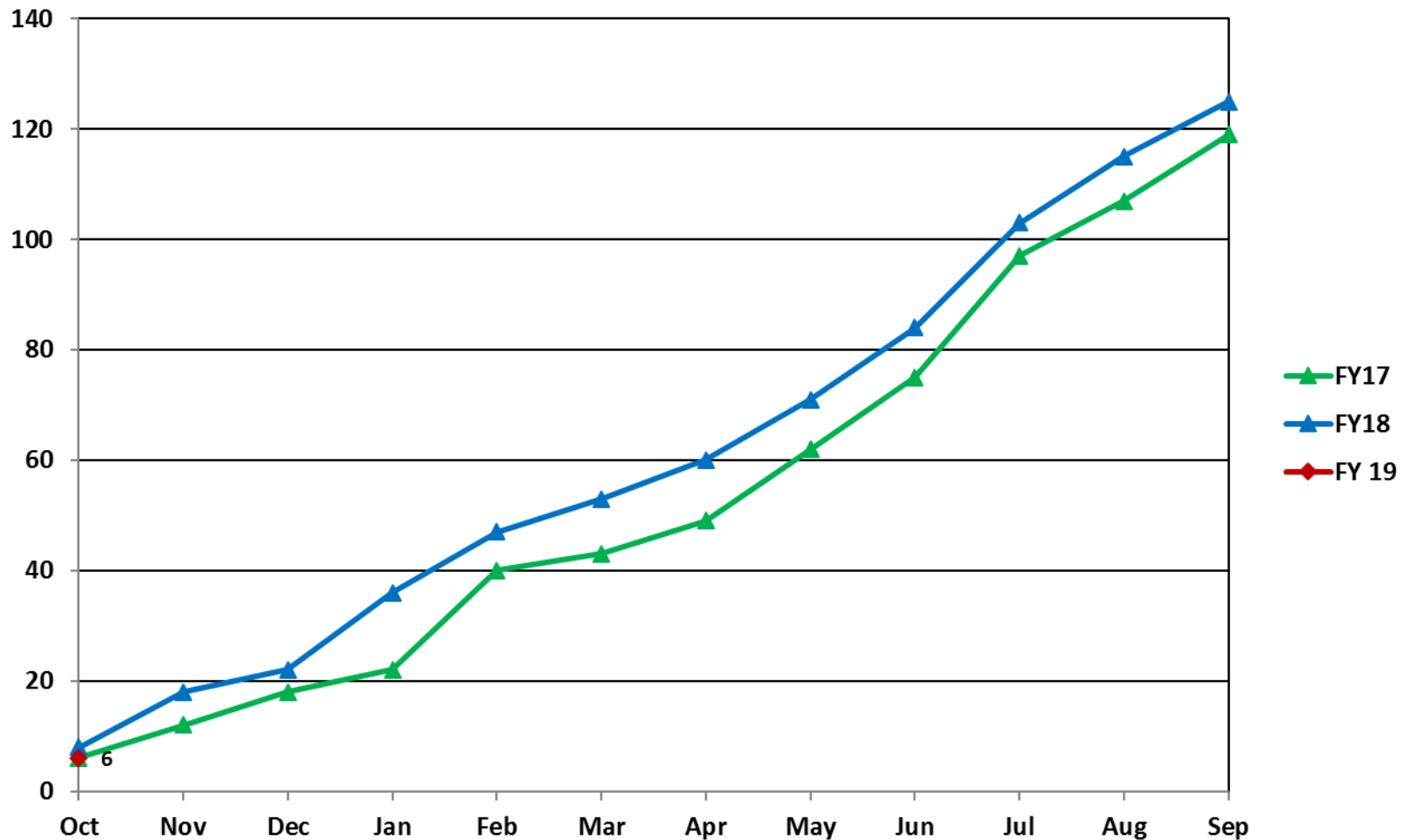
U.S. Registered Rotorcraft Accidents FY83 - FY19



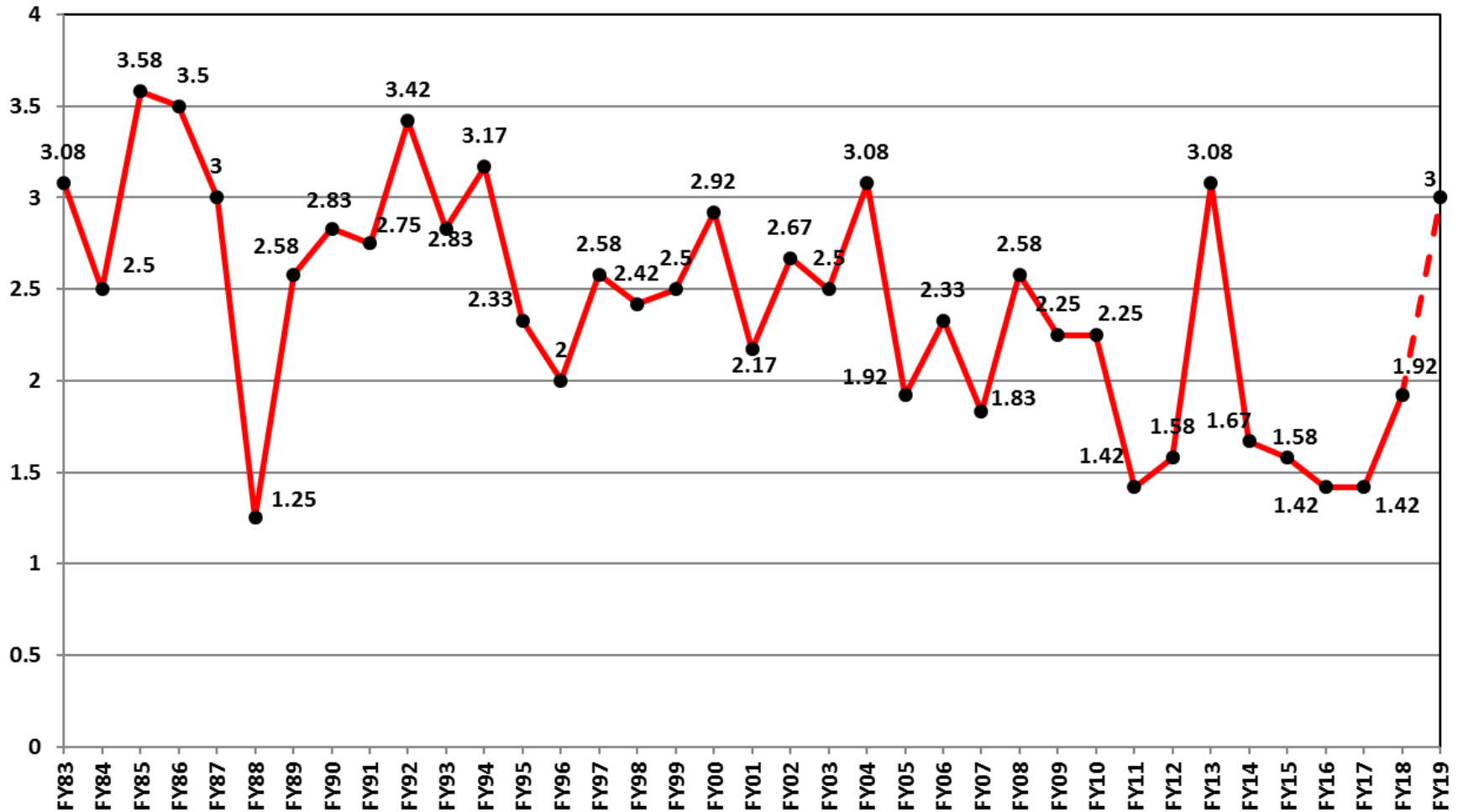
U.S. Registered Rotorcraft Cumulative Fatal Accident Count: FY17 - 19



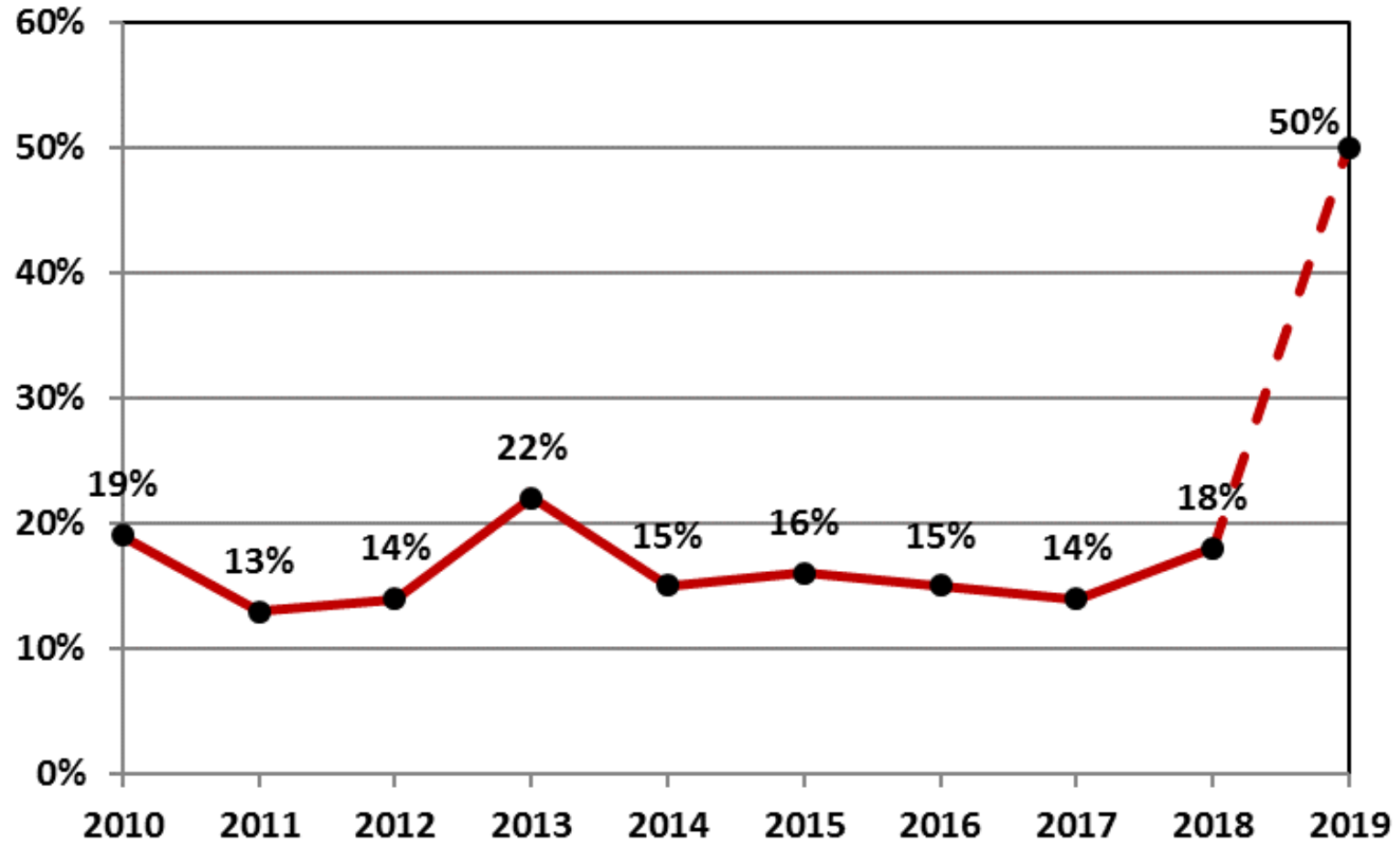
U.S. Registered Rotorcraft Cumulative Accident Count: FY17 - 19



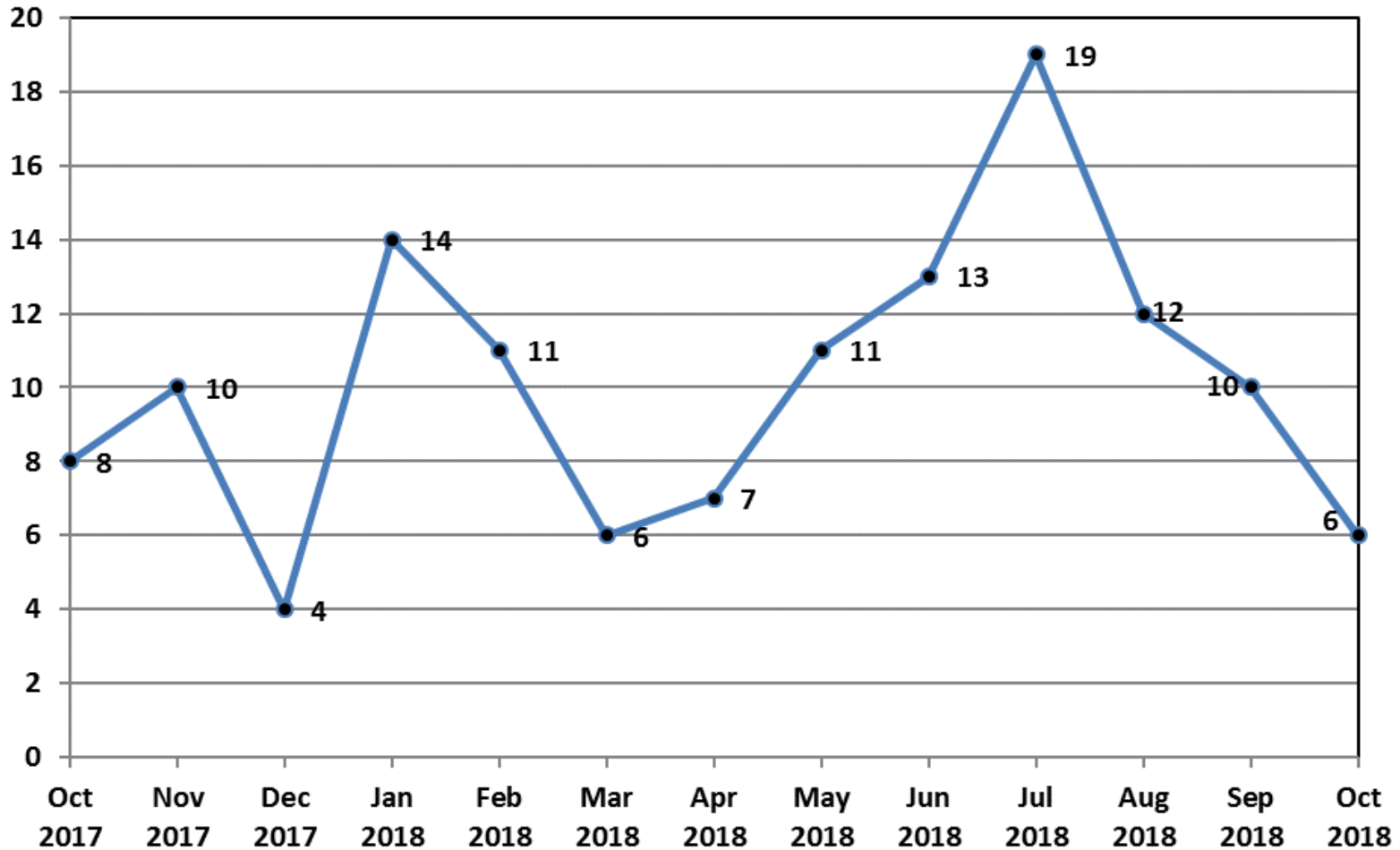
U.S. Registered Rotorcraft Average Fatal Accidents Per Month, FY83-FY19



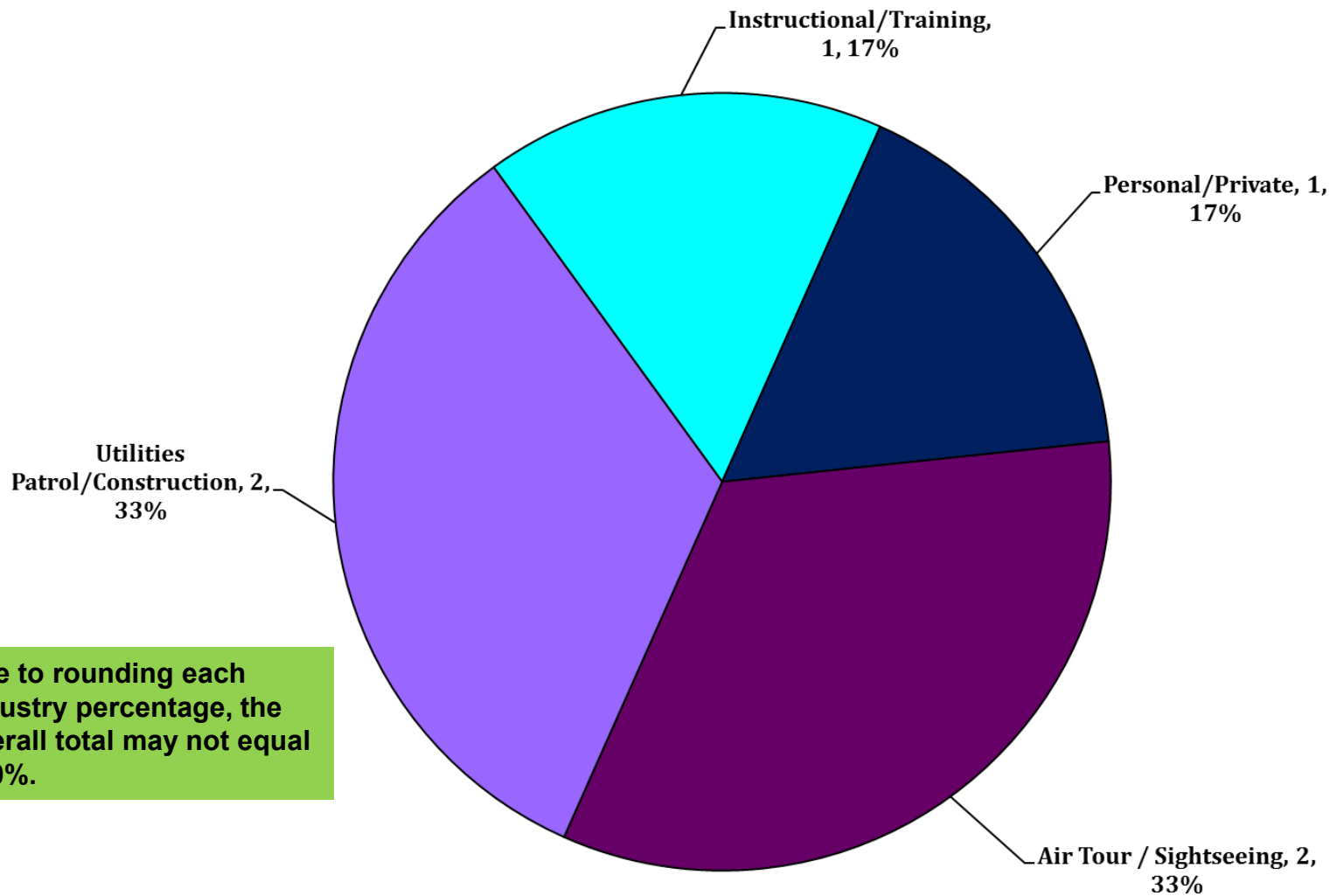
% of U.S. Rotorcraft Accidents with a Fatality (FY19, Oct only)



U.S. Registered Rotorcraft 13 Month Rolling Accident Count

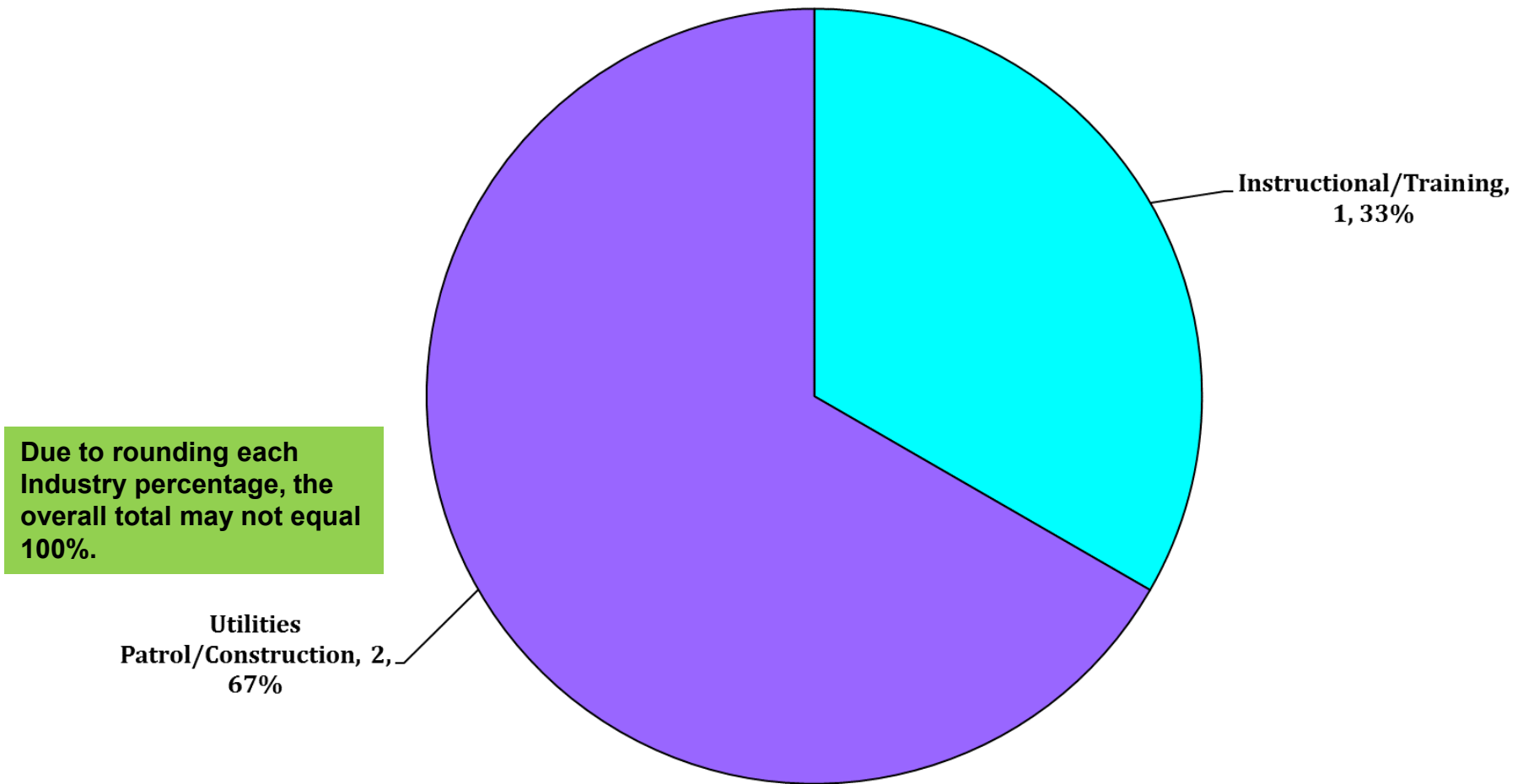


FY 19 – Total Accidents by Industry (Oct 2018)



Due to rounding each Industry percentage, the overall total may not equal 100%.

FY 19 – Total FATAL Accidents by Industry (Oct 2018)



FY 19 – U.S. Registered Fatal Rotorcraft Accidents

- 10-30-18 – Airbus Helicopter AS355F2, N372CA, Beekmantown, NY, Part 133,
2 Fatal, 2 Survivors
- Utilities Patrol/Construction; stringing fiber optic line along existing power lines
 - Contacted lines, became entangled, fire ensued NTSB Number Pending
- 10-29-18 – Airbus Helicopter AS350B3, N910S, Odanah, WI, Part 91, 1 Fatal
- Utilities Patrol/Construction; oil and gas aerial pipeline patrol
 - Crashed under unknown circumstances, post-crash fire NTSB Number Pending
- 10-17-18 – Robinson R22, N923SH, Fulton, MO, Part 91, 1 Fatal
- Instructional/Training; Solo cross country flight to Columbia, MO
 - Crashed while enroute [NTSB: CEN19FA009](#)

FY 19 - US Rotorcraft Accidents By Model

MFR	Model	Registered U.S. Fleet Size	Percentage of Total U.S. Fleet	Number of FY19 U.S. Registered Accidents	Percentage of Total FY19 U.S. Registered Accidents
Airbus Helicopters	AS350 (H125)	918	7%	1	17%
	AS355	47	< 1%	1	17%
	BK117 (H145)	203	2%		
	EC120 (H120)	95	1%		
	EC130 (H130)	247	2%		
	EC135 (H135)	311	2%		

Only models that comprise at least 1% of U.S. registered rotorcraft are listed unless an accident has occurred.

*Fleet size based on analysis of rotorcraft on FAA registry as of Apr 2018

FY 19 - US Rotorcraft Accidents By Model

MFR	Model	Registered U.S. Fleet Size	Percentage of Total U.S. Fleet	Number of FY19 U.S. Registered Accidents	Percentage of Total FY19 U.S. Registered Accidents
Bell	206Bs	1,027	8%		
	206Ls	580	5%		
	212	93	1%		
	407	722	6%		
	412	93	1%		
	429	85	1%		

Only models that comprise at least 1% of U.S. registered rotorcraft are listed unless an accident has occurred.

*Fleet size based on analysis of rotorcraft on FAA registry as of Apr 2018

FY 19 - US Rotorcraft Accidents By Model

MFR	Model	Registered U.S. Fleet Size	Percentage of Total U.S. Fleet	Number of FY18 U.S. Registered Accidents	Percentage of Total FY18 U.S. Registered Accidents
Robinson	R-22	910	7%	1	17%
	R-44	1,605	13%	2	33%
	R-66	249	2%		

Only models that comprise at least 1% of U.S. registered rotorcraft are listed unless an accident has occurred.

*Fleet size based on analysis of rotorcraft on FAA registry as of Apr 2018

FY 19 - US Rotorcraft Accidents By Model

MFR	Model	Registered U.S. Fleet Size	Percentage of Total U.S. Fleet	Number of FY19 U.S. Registered Accidents	Percentage of Total FY19 U.S. Registered Accidents
Sikorsky	S-76	244	2%		
	S-92	85	1%		

Only models that comprise at least 1% of U.S. registered rotorcraft are listed unless an accident has occurred.

*Fleet size based on analysis of rotorcraft on FAA registry as of Apr 2018

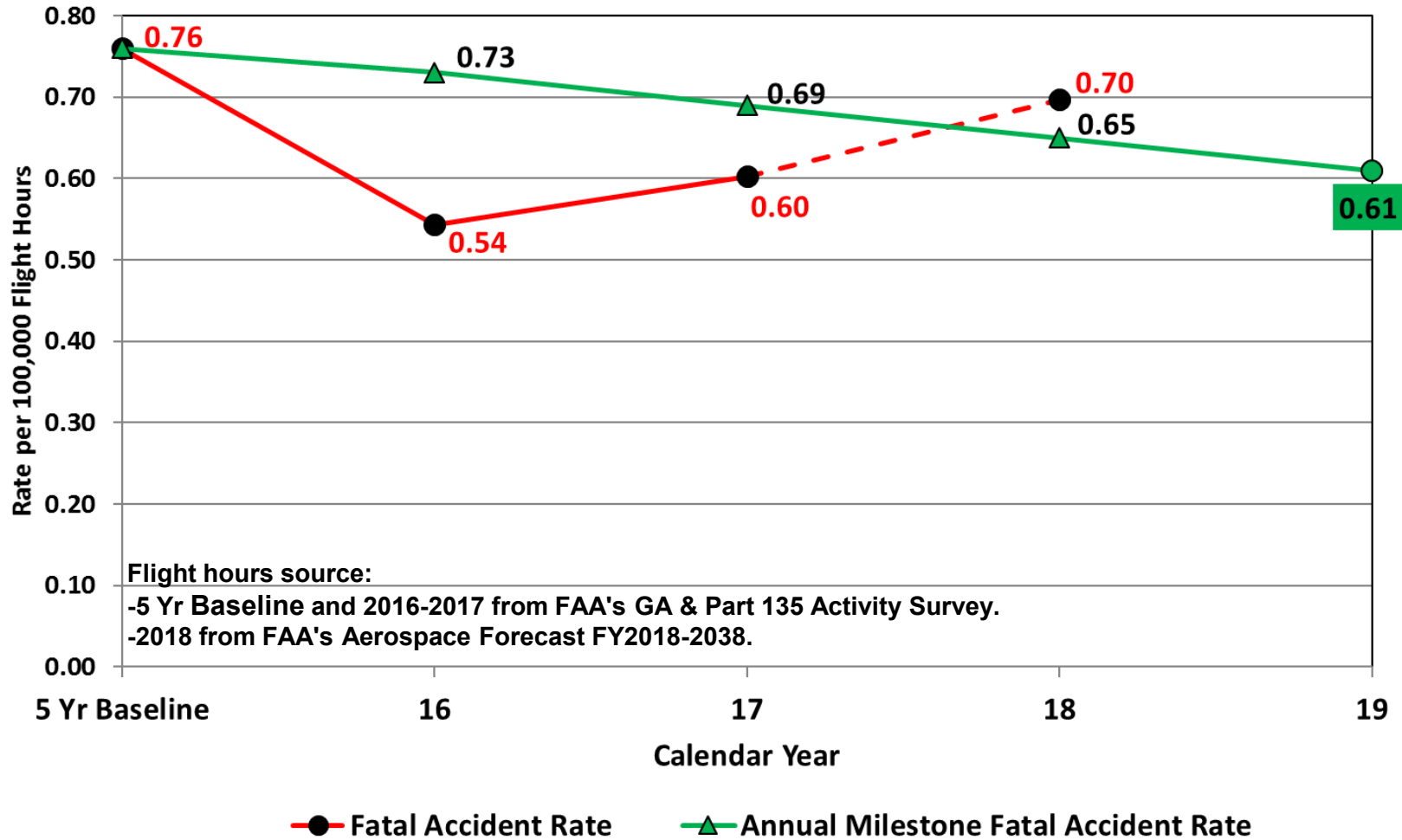
FY 19 - US Rotorcraft Accidents By Model

MFR	Model	Registered U.S. Fleet Size	Percentage of Total U.S. Fleet	Number of FY19 U.S. Registered Accidents	Percentage of Total FY19 U.S. Registered Accidents
Brantly	B-2	76	1%		
Enstrom	280	137	1%		
	480	69	1%		
	F28	164	1%	1	17%
Hiller	UH-12/H-23	311	2%		
Leonardo (formerly Agusta Westland)	A109	174	1%		
	A119	98	1%		
	AW139	124	1%		
MDHI	369	718	6%		
Restricted Category (all TCs)	HH-1/TH-1/UH-1	572	5%		
	OH-58	442	3%		
Schweizer Rotorcraft Services Group	269/300/TH-55	557	4%		
Scott's Bell	47	628	5%		

Only models that comprise at least 1% of U.S. registered rotorcraft are listed unless an accident has occurred.

*Fleet size based on analysis of rotorcraft on FAA registry as of Apr 2018

U.S. Helicopter Safety Team (USHST) Fatal Accident Rate (Jan-Oct)





**Federal Aviation
Administration**

Rotorcraft Standards Branch AIR-680

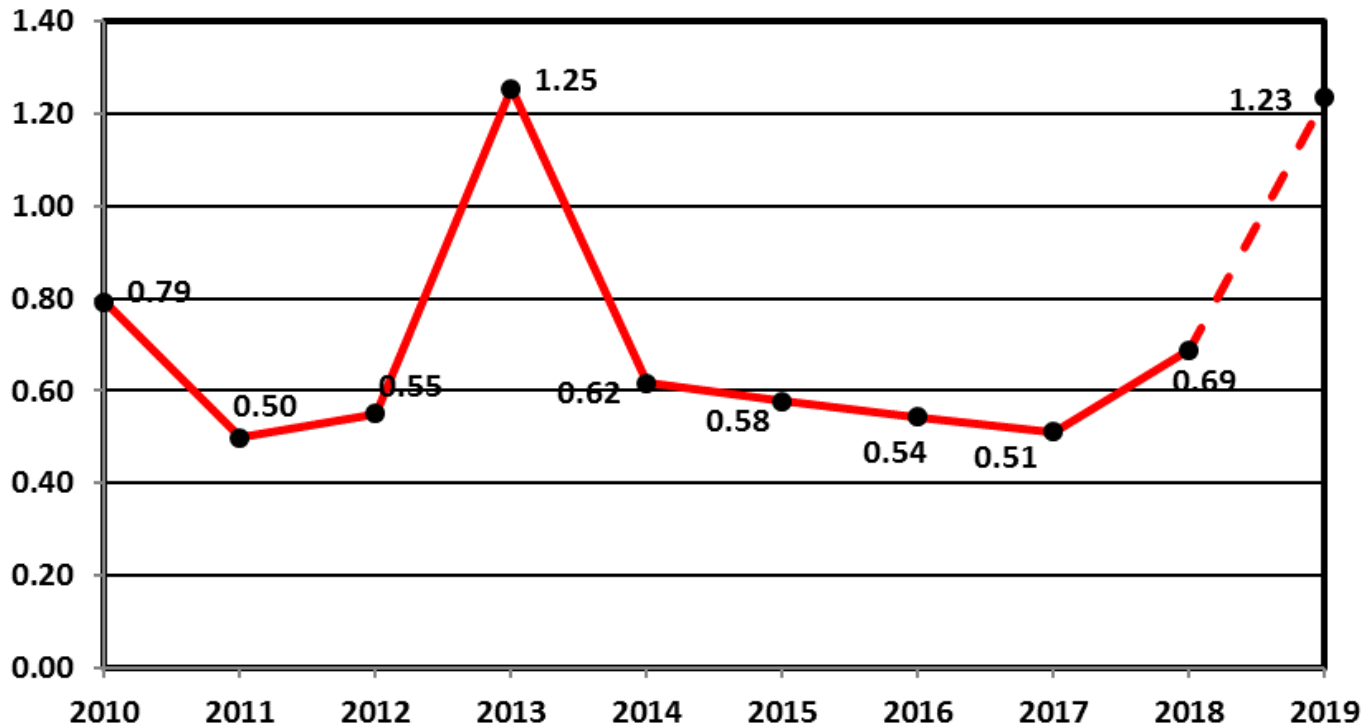
Monthly Accident Briefing

Nov 2018

**By: AIR-682, Safety Management Section,
Rotorcraft Standards Branch**



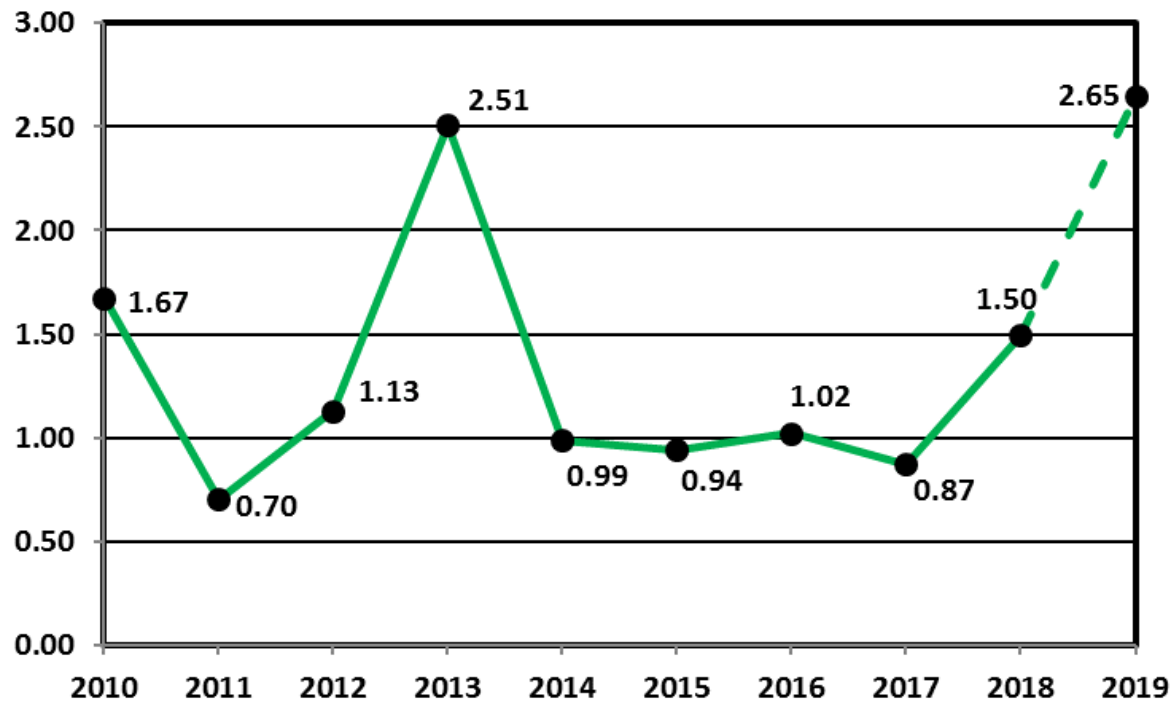
Estimated U.S. Rotorcraft FATAL Accident Rate (per 100,000 hours) – 10 Year Lookback



Rate calculation based on the following:

- 1) Accident totals compiled by AIR-682.
- 2) Historic rotorcraft flight hours extracted from General Aviation and Part 135 Activity Survey. The survey categorizes flight hours by calendar year. Assumption was that hours would be comparable if used for fiscal year calculations.
- 3) FY 11 rotorcraft flight hours and the projected hours for FY 18-19 were based on the FAA's FY2018-2038 forecast (released March 2018).

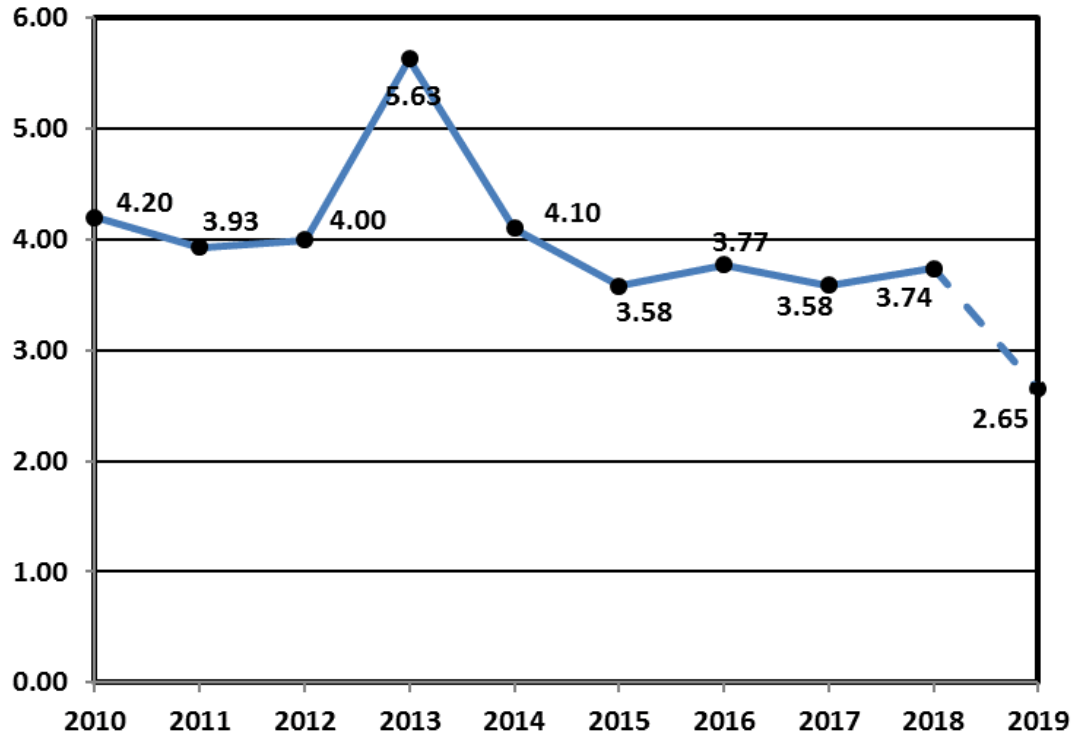
Estimated U.S. Rotorcraft Fatality Rate (per 100,000 hours) – 10 Year Lookback



Rate calculation based on the following:

- 1) Accident totals compiled by AIR-682.
- 2) Historic rotorcraft flight hours extracted from General Aviation and Part 135 Activity Survey. The survey categorizes flight hours by calendar year. Assumption was that hours would be comparable if used for fiscal year calculations.
- 3) FY 11 rotorcraft flight hours and the projected hours for FY 18-19 were based on the FAA's FY2018-2038 forecast (released March 2018).

Estimated U.S. Rotorcraft Accident Rate (per 100,000 hours) – 10 Year Lookback



Rate calculation based on the following:

- 1) Accident totals compiled by AIR-682.
- 2) Historic rotorcraft flight hours extracted from General Aviation and Part 135 Activity Survey. The survey categorizes flight hours by calendar year. Assumption was that hours would be comparable if used for fiscal year calculations.
- 3) FY 11 rotorcraft flight hours and the projected hours for FY 18-19 were based on the FAA's FY2018-2038 forecast (released March 2018).

FY 19 – U.S. Registered Rotorcraft Event Counts

	Oct	Nov	Dec	Jan	Feb	Mar	Apr	May	Jun	Jul	Aug	Sep	YTD
Accidents:	7	8											15
Fatal Acc:	3	4											7
Fatalities:	4	11											15

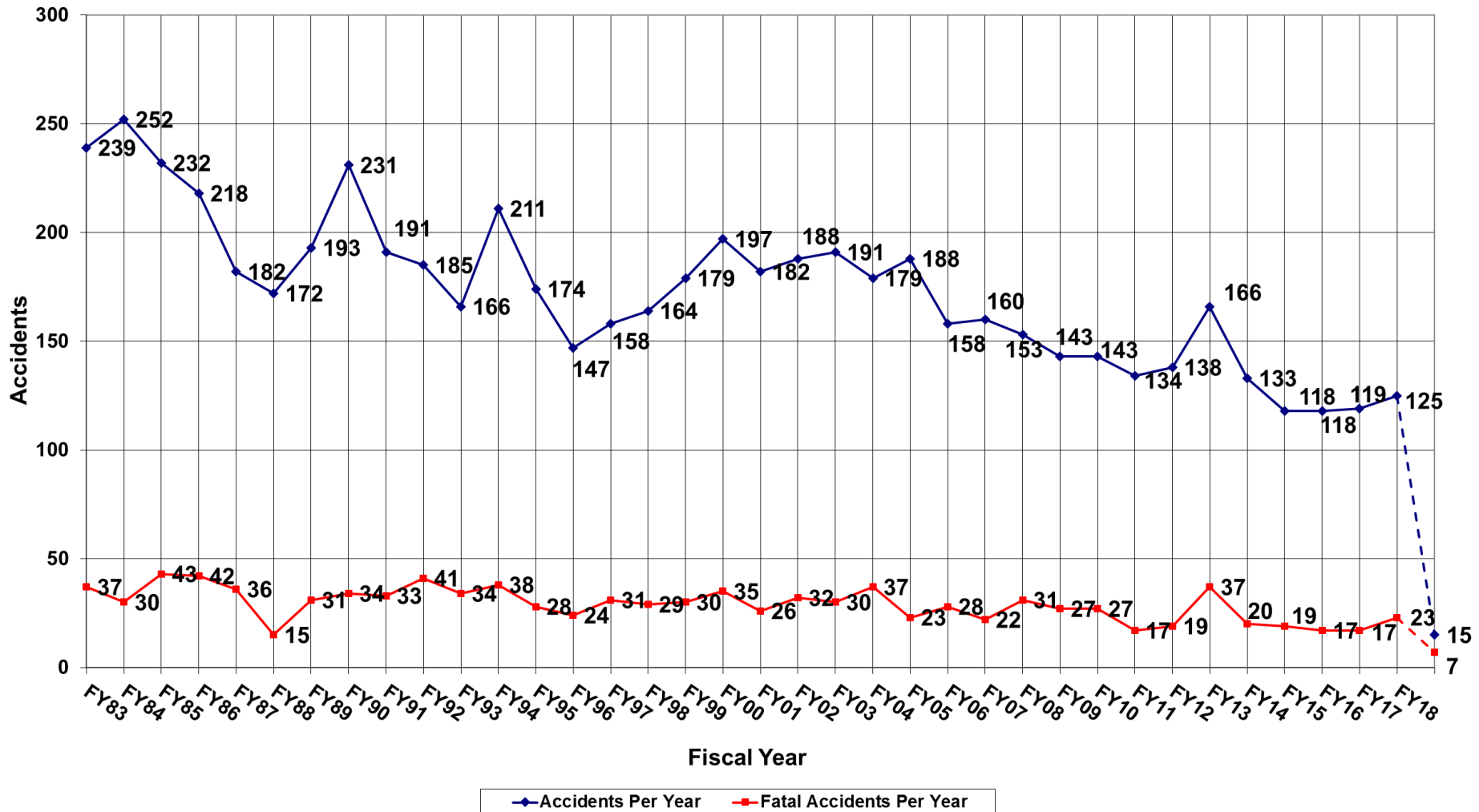
Same time period, previous FY: 18 Accidents, 6 Fatal Accidents, 10 Fatalities

Data Source: FAA, NTSB Databases. Includes only events classified as accidents and does not include incidents. The accident numbers for each month of the Fiscal Year may vary from the previous monthly briefing based on analysis between FAA and NTSB databases for the specified month. The NTSB database may include accidents that were not reported to this office resulting in slightly different numbers.

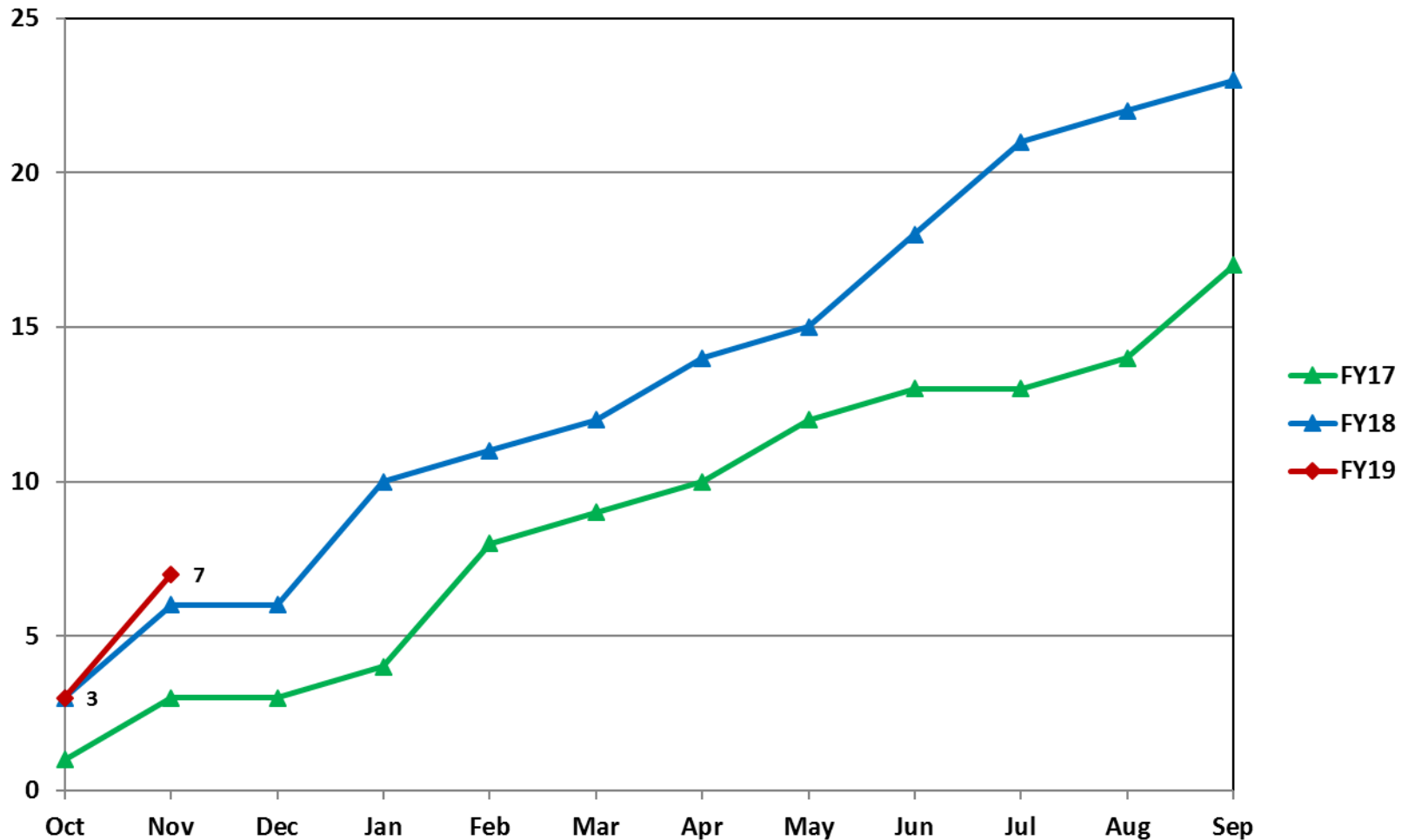
Estimated Rates by Month (per 100,000 flight hours)

	Oct	Nov	Dec	Jan	Feb	Mar	Apr	May	Jun	Jul	Aug	Sep	YTD
Accidents:	2.29	3.06											2.65
Fatal Acc:	0.98	1.53											1.23
Fatalities:	1.31	4.21											2.65

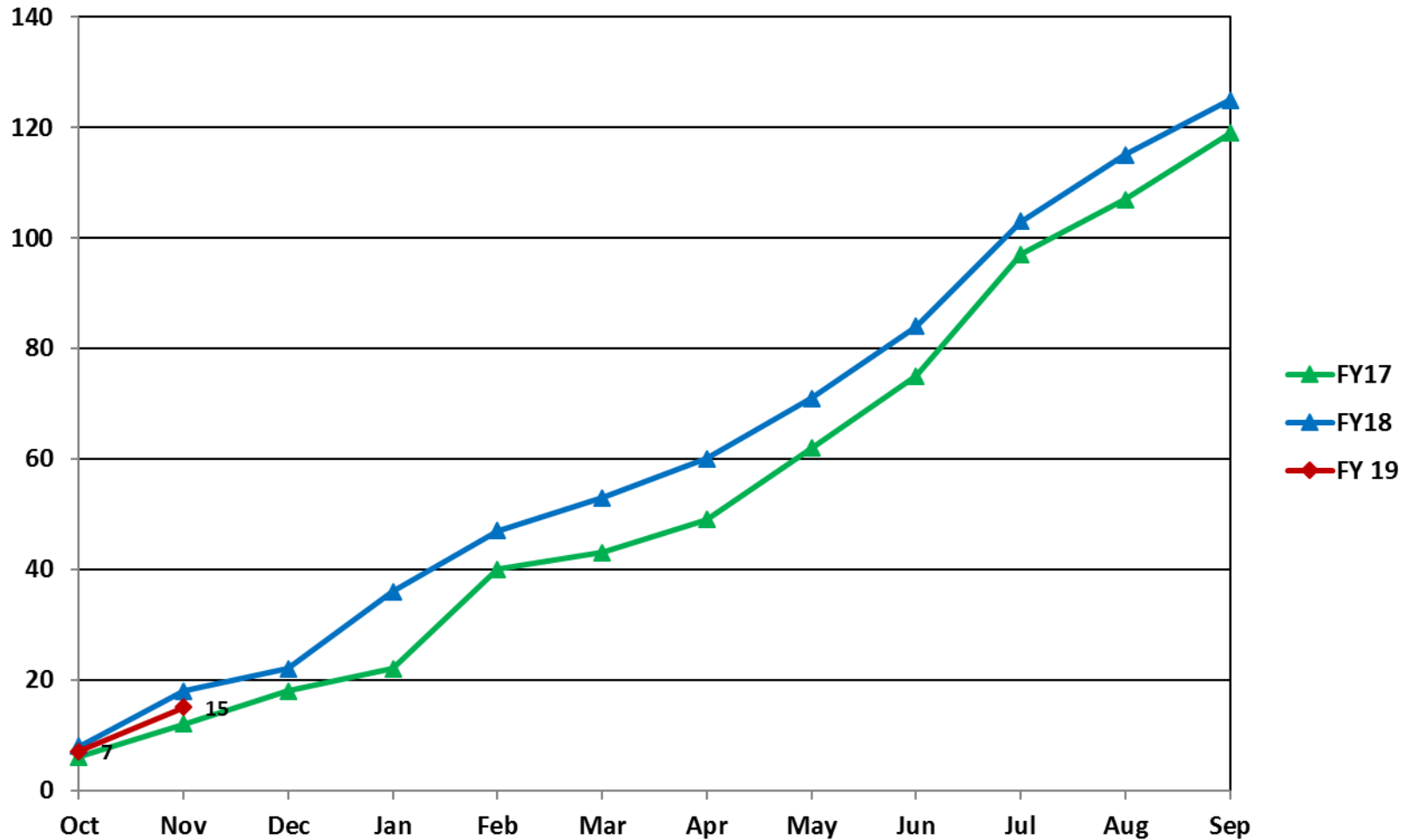
U.S. Registered Rotorcraft Accidents FY83 - FY19



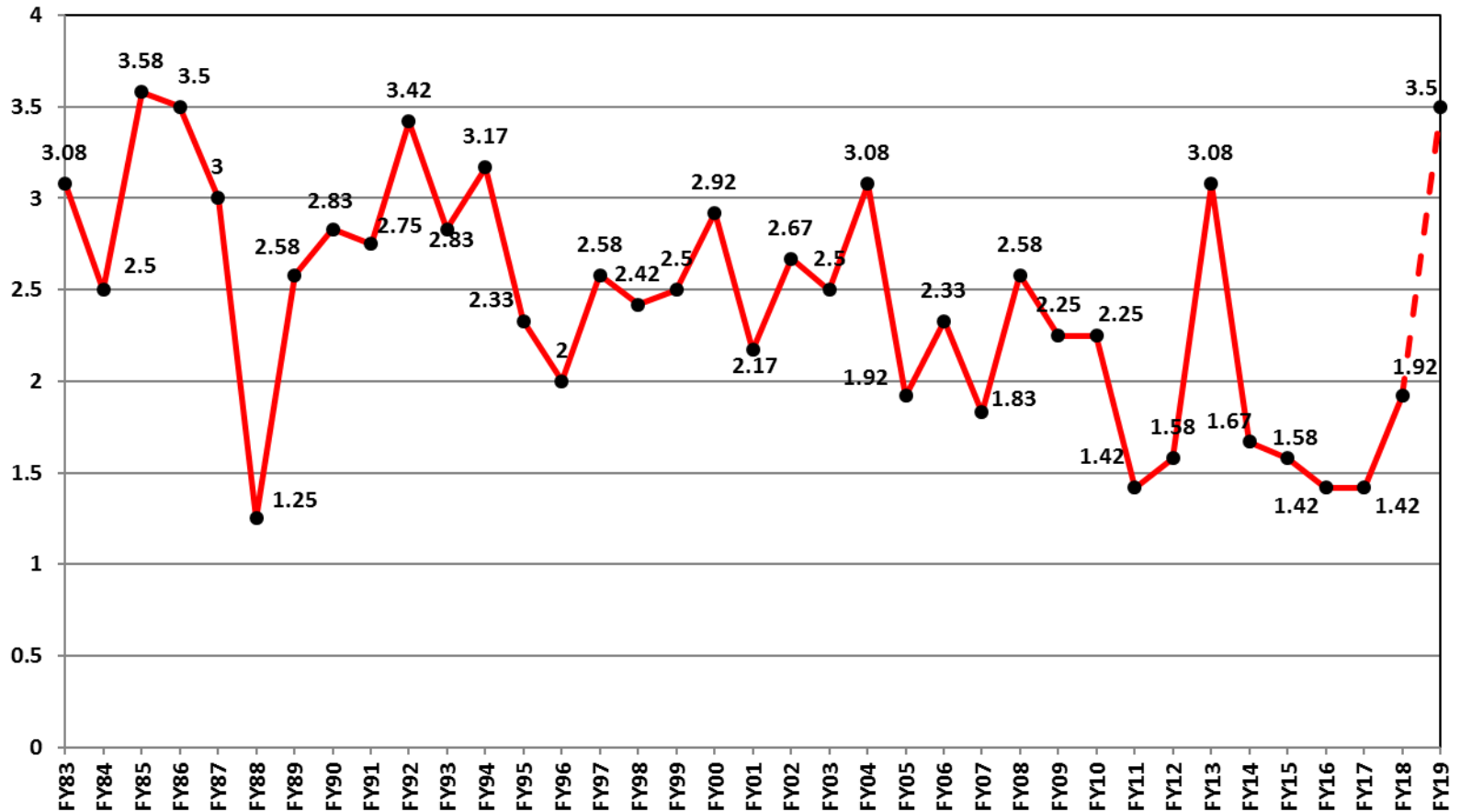
U.S. Registered Rotorcraft Cumulative Fatal Accident Count: FY17 - 19



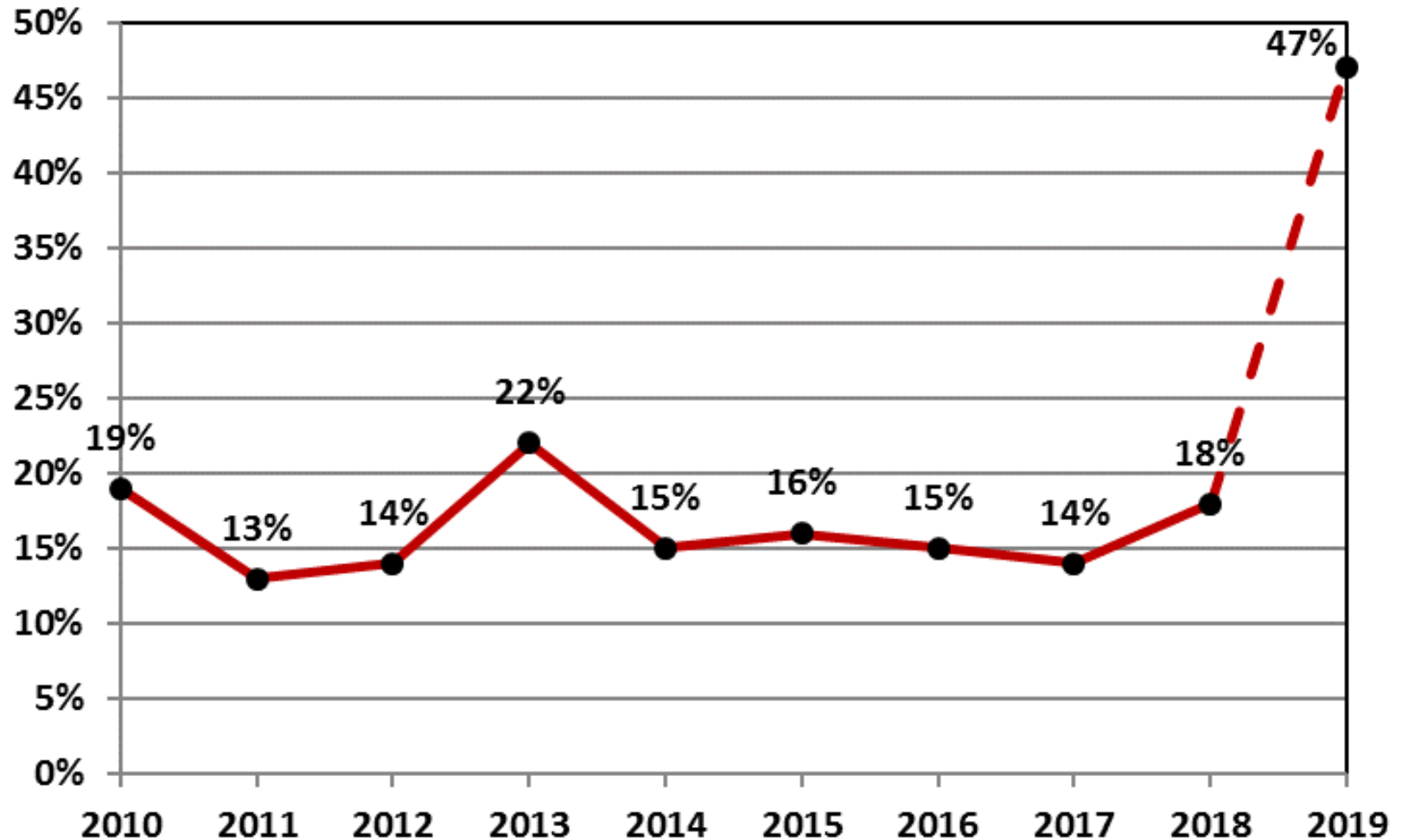
U.S. Registered Rotorcraft Cumulative Accident Count: FY17 - 19



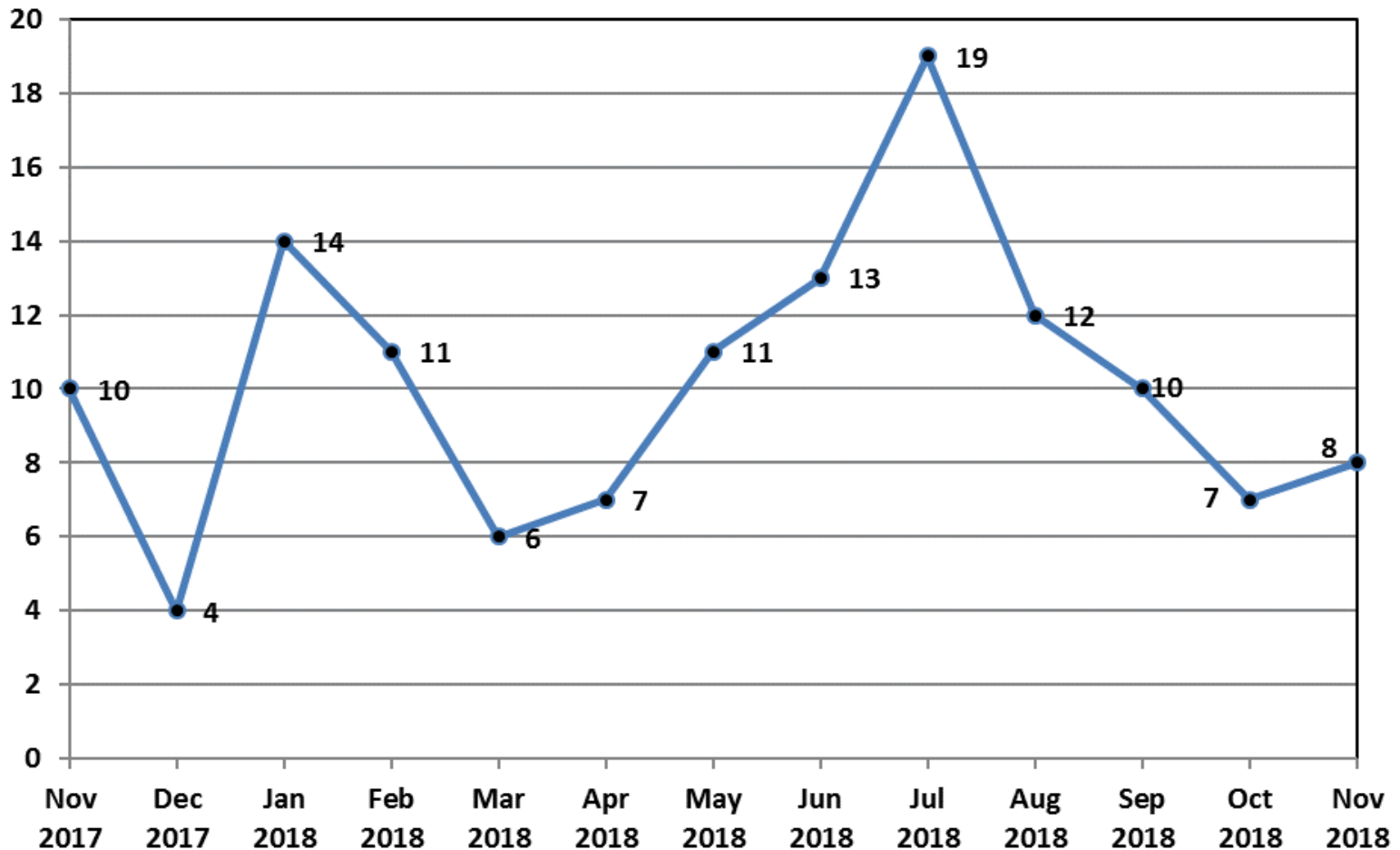
U.S. Registered Rotorcraft Average Fatal Accidents Per Month, FY83-FY19



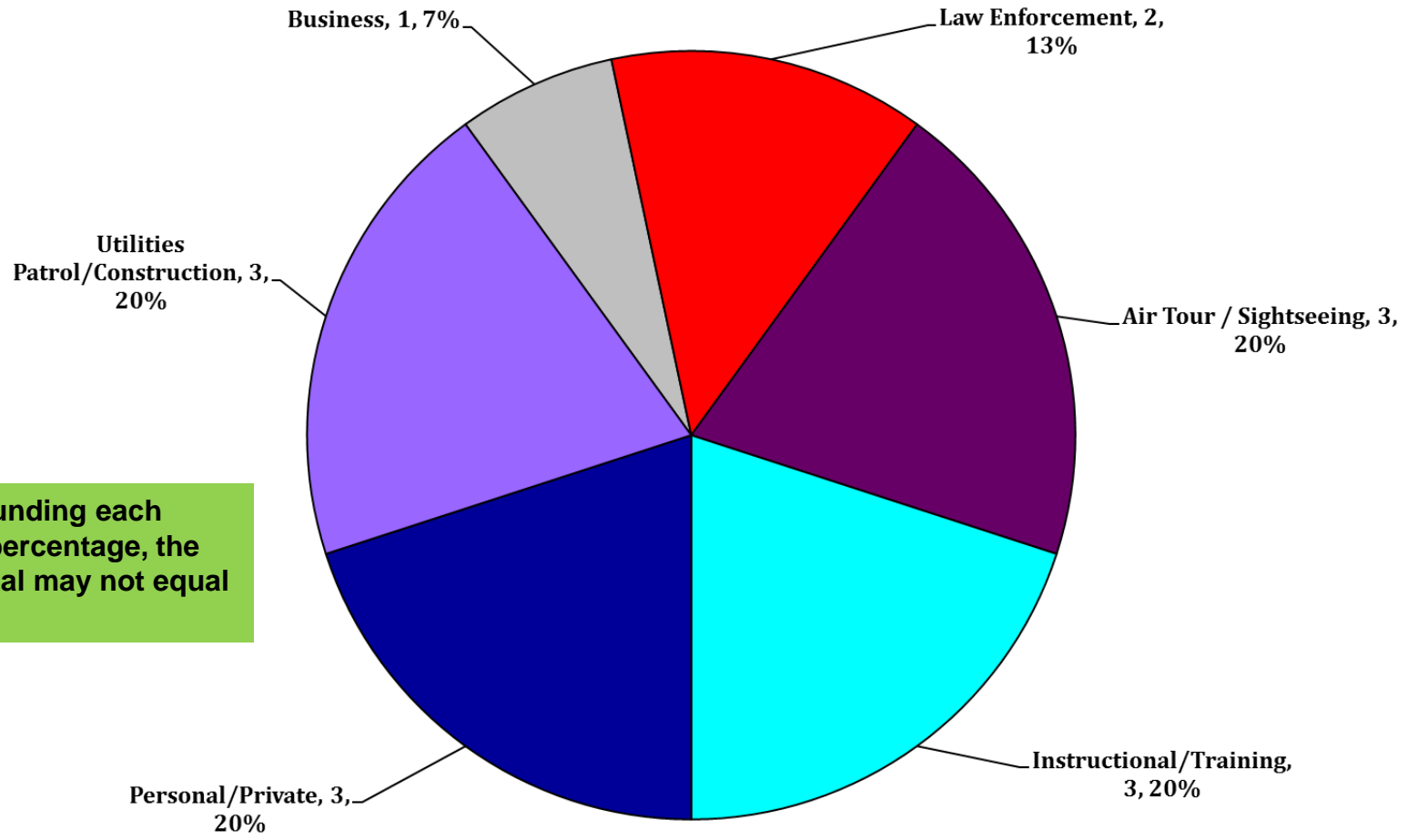
% of U.S. Rotorcraft Accidents with a Fatality (FY19, Oct-Nov)



U.S. Registered Rotorcraft 13 Month Rolling Accident Count



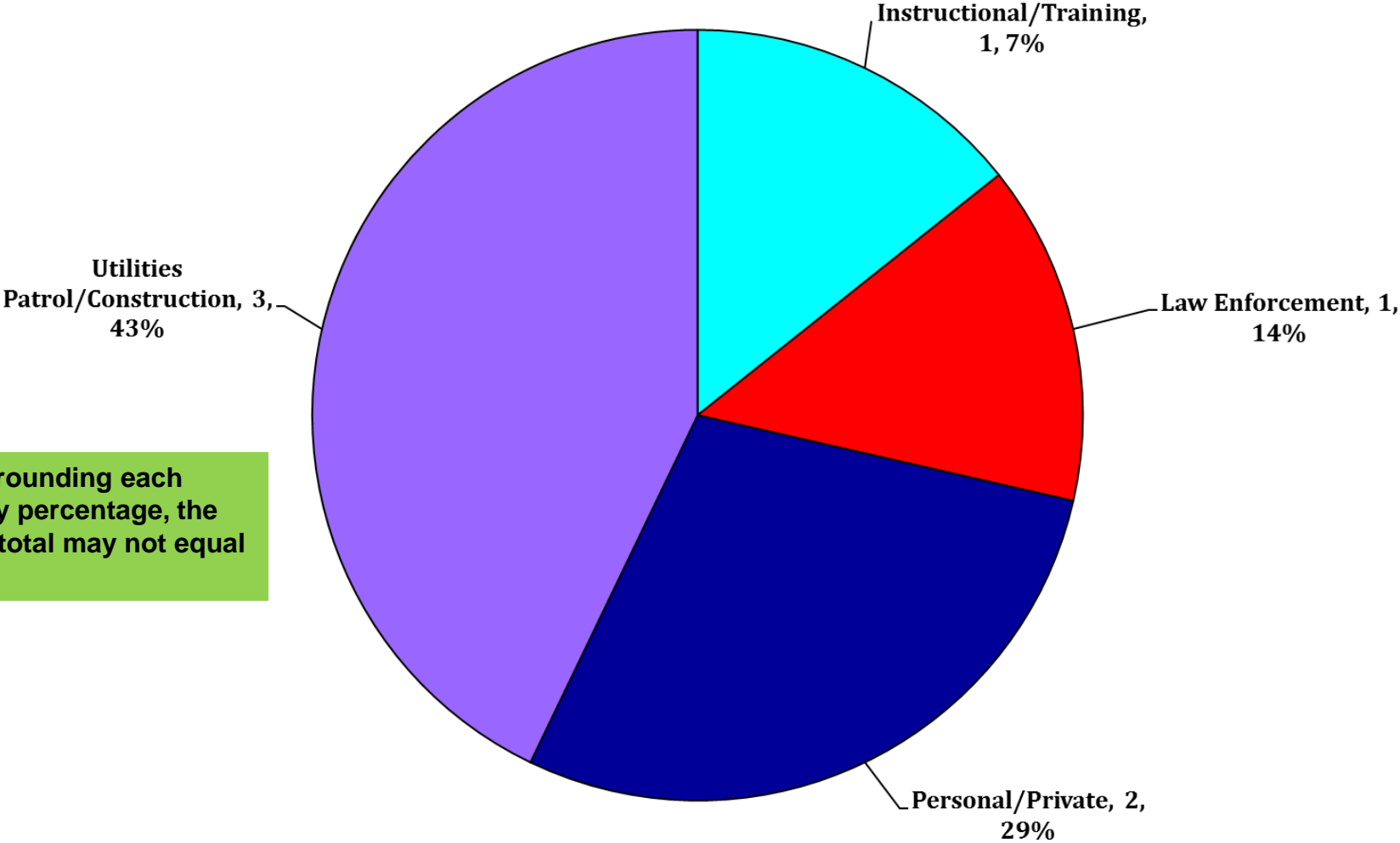
FY 19 – Total Accidents by Industry (Oct-Nov 2018)



Due to rounding each Industry percentage, the overall total may not equal 100%.



FY 19 – Total FATAL Accidents by Industry (Oct-Nov 2018)



Due to rounding each industry percentage, the overall total may not equal 100%.



FY 19 – U.S. Registered Fatal Rotorcraft Accidents

- 11-16-18 – Bell OH-58C, N510CP, Clanton, AL, Part 91, 2 Fatal
 - Law enforcement, positioning flight from Columbus, GA to Auburn, AL
 - Struck powerlines and impacted the Coosa River [NTSB: ERA19FA047](#)
- 11-4-18 – Bell 206B, N417WT, Uvalde, TX, Part 91, 3 Fatal
 - Personal use; night flight departed private ranch en route to San Antonio
 - Collided with 1,450 foot hill about 5 miles from ranch [NTSB: CEN19FA024](#)

FY 19 – U.S. Registered Fatal Rotorcraft Accidents

- 11-2-18 – MDHI 369D, N5187S, McDougal, AR, Part 133, 1 Fatal, 2 Minor
 - Utilities Patrol/Construction; utility line work w/2 linemen attached
 - Impacted a utility pole and crashed [NTSB: CEN19FA020](#)

- 10-30-18 – Airbus Helicopter AS355F2, N372CA, Beekmantown, NY, Part 133, 2 Fatal, 2 Serious
 - Utilities Patrol/Construction; stringing fiber optic line along existing power lines
 - Contacted lines, became entangled, fire ensued [NTSB: ERA19FA035](#)

- 10-29-18 – Airbus Helicopter AS350B3, N910S, Odanah, WI, Part 91, 1 Fatal
 - Utilities Patrol/Construction; oil and gas aerial pipeline patrol
 - Crashed under unknown circumstances, post-crash fire [NTSB: CEN19FA018](#)

- 10-17-18 – Robinson R22, N923SH, Fulton, MO, Part 91, 1 Fatal
 - Instructional/Training; Solo cross country flight to Columbia, MO
 - Crashed while enroute [NTSB: CEN19FA009](#)

FY 19 – U.S. Registered Fatal Rotorcraft Accidents Occurring Outside the U.S.

- 11-22-18 – Airbus Helicopter EC120B, N124ML, La Romana, Dominican Republic, 5 Fatal
– Crashed under unknown circumstances NTSB: ERA19WA054



FY 19 - US Rotorcraft Accidents By Model

MFR	Model	Registered U.S. Fleet Size	Percentage of Total U.S. Fleet	Number of FY19 U.S. Registered Accidents	Percentage of Total FY19 U.S. Registered Accidents
Airbus Helicopters	AS350 (H125)	918	7%	1	7%
	AS355	47	< 1%	1	7%
	BK117 (H145)	203	2%		
	EC120 (H120)	95	1%	1	7%
	EC130 (H130)	247	2%		
	EC135 (H135)	311	2%		

Only models that comprise at least 1% of U.S. registered rotorcraft are listed unless an accident has occurred.

*Fleet size based on analysis of rotorcraft on FAA registry as of Apr 2018

FY 19 - US Rotorcraft Accidents By Model

MFR	Model	Registered U.S. Fleet Size	Percentage of Total U.S. Fleet	Number of FY19 U.S. Registered Accidents	Percentage of Total FY19 U.S. Registered Accidents
Bell	206Bs	1,027	8%	1	7%
	206Ls	580	5%		
	212	93	1%		
	407	722	6%		
	412	93	1%		
	429	85	1%		

Only models that comprise at least 1% of U.S. registered rotorcraft are listed unless an accident has occurred.

*Fleet size based on analysis of rotorcraft on FAA registry as of Apr 2018

FY 19 - US Rotorcraft Accidents By Model

MFR	Model	Registered U.S. Fleet Size	Percentage of Total U.S. Fleet	Number of FY19 U.S. Registered Accidents	Percentage of Total FY19 U.S. Registered Accidents
Robinson	R-22	910	7%	1	7%
	R-44	1,605	13%	4	27%
	R-66	249	2%		

Only models that comprise at least 1% of U.S. registered rotorcraft are listed unless an accident has occurred.

*Fleet size based on analysis of rotorcraft on FAA registry as of Apr 2018

FY 19 - US Rotorcraft Accidents By Model

MFR	Model	Registered U.S. Fleet Size	Percentage of Total U.S. Fleet	Number of FY19 U.S. Registered Accidents	Percentage of Total FY19 U.S. Registered Accidents
Sikorsky	S-76	244	2%		
	S-92	85	1%		

Only models that comprise at least 1% of U.S. registered rotorcraft are listed unless an accident has occurred.

*Fleet size based on analysis of rotorcraft on FAA registry as of Apr 2018

FY 19 - US Rotorcraft Accidents By Model

MFR	Model	Registered U.S. Fleet Size	Percentage of Total U.S. Fleet	Number of FY19 U.S. Registered Accidents	Percentage of Total FY19 U.S. Registered Accidents
Brantly	B-2	76	1%		
Enstrom	280	137	1%		
	480	69	1%		
	F28	164	1%	1	7%
Helicopteres Guimbal	Cabri G2	26	< 1%	1	
Hiller	UH-12/H-23	311	2%		
Leonardo (formerly Agusta Westland)	A109	174	1%		
	A119	98	1%		
	AW139	124	1%		
MDHI	369	718	6%	1	7%
Restricted Category (all TCs)	HH-1/TH-1/UH-1	572	5%		
	OH-58	442	3%	2	13%
Schweizer Rotorcraft Services Group	269/300/TH-55	557	4%		
Scott's Bell	47	628	5%	1	7%

Only models that comprise at least 1% of U.S. registered rotorcraft are listed unless an accident has occurred.

*Fleet size based on analysis of rotorcraft on FAA registry as of Apr 2018

U.S. Helicopter Safety Team (USHST) Fatal Accident Rate (Jan-Nov)

